

03-08-13 LETTING ITEM 022

STATE OF ILLINOIS
DEPARTMENT OF TRANSPORTATION
DIVISION OF HIGHWAYS

**PROPOSED
CONTRACT MAINTENANCE**

F.A.I. ROUTE 72 & 172 (I 72 & I 172)
SECTION (75-1) I-2, (75-2) I-1, (75-3) I
PROJECT PATCHING
TYPE of IMPROVEMENT
ADAMS & PIKE COUNTY

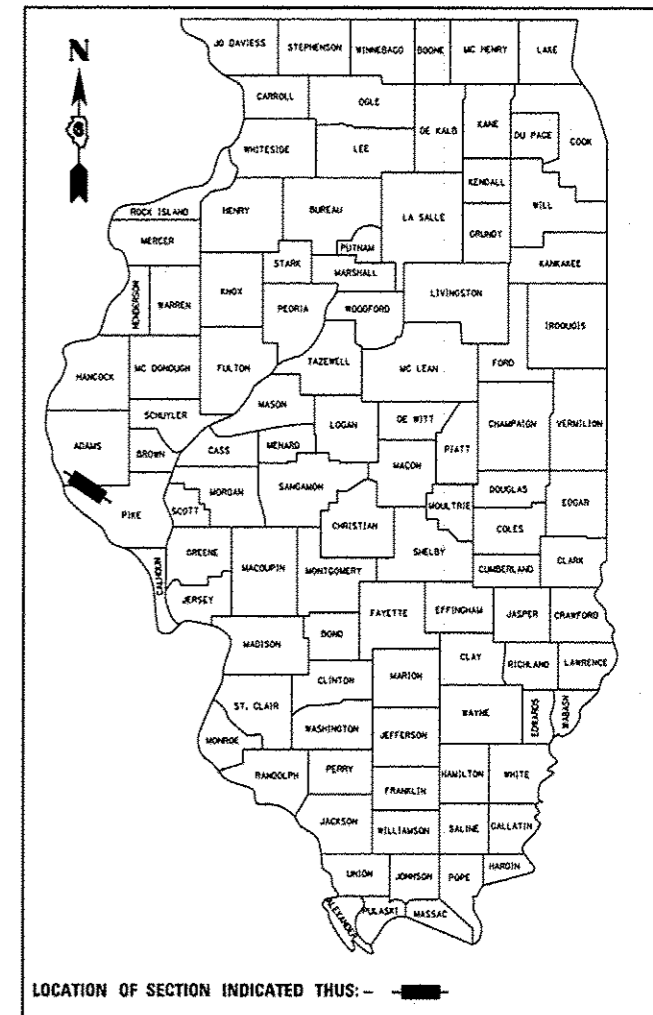
C-96-079-12

FOR INDEX OF SHEETS, SEE SHEET NO. 2

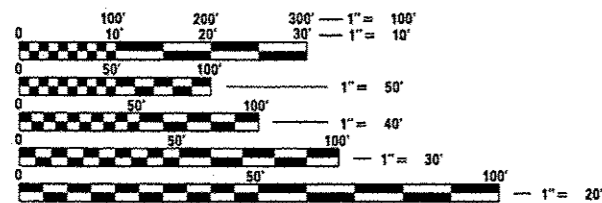
F.A.I. RTE.	SECTION	COUNTY	TOTAL SHEETS	SHEET NO.
72	*	PIKE-ADAMS	7	1
		ILLINOIS	CONTRACT NO. 72F61	

* (75-1)-2, (75-2)-1, (75-3)-1

D-96-079-12

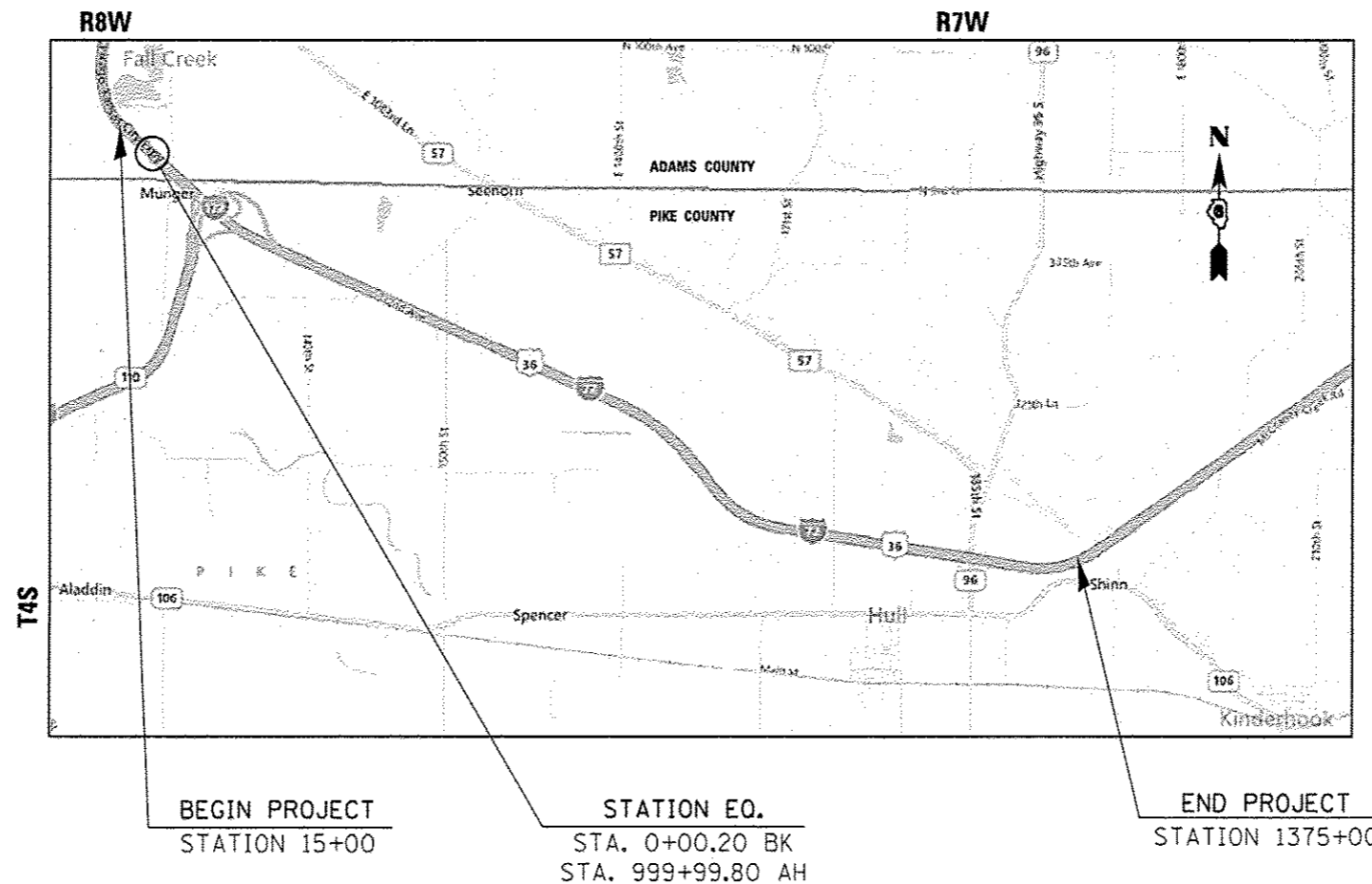


ADT: 6300 (2011)



FULL SIZE PLANS HAVE BEEN PREPARED USING STANDARD ENGINEERING SCALES. REDUCED SIZED PLANS WILL NOT CONFORM TO STANDARD SCALES. IN MAKING MEASUREMENTS ON REDUCED PLANS, THE ABOVE SCALES MAY BE USED.

J.U.L.I.E.
JOINT UTILITY LOCATION INFORMATION FOR EXCAVATION
1-800-892-0123
OR 811



PLAN AND CONTRACT TECHNICIAN
TIM SHARP (217) 782-7743
DAVE SHAH
CONTRACT NO. 72F61

NET LENGTH = 3,751.20 FT. = 7.105 MILE

STATE OF ILLINOIS
DEPARTMENT OF TRANSPORTATION
DIVISION OF HIGHWAYS

SUBMITTED December 14 20 12
Ryan Z. Oswald
DEPUTY DIRECTOR OF HIGHWAYS, REGION ENGINEER

Feb 1 20 13
John D. Baranzelli PE
ENGINEER OF DESIGN AND ENVIRONMENT

Feb 1 20 13
Oran Osman PE
DIRECTOR OF HIGHWAYS, CHIEF ENGINEER

PRINTED BY THE AUTHORITY
OF THE STATE OF ILLINOIS

INDEX OF SHEETS

SHEET NO.	DESCRIPTION
1.	COVER SHEET
2.	INDEX OF SHEETS, STANDARDS, GENERAL NOTES & SIGNATURE
3-4.	SUMMARY OF QUANTITIES
5.	SCHEDULE OF QUANTITIES
6.	PROJECT LOCATION MAP
7.	PROJECT TYPICAL SECTIONS

STANDARDS

STANDARD NO.	DESCRIPTION
000001-06	STANDARD SYMBOLS, ABBREVIATIONS, AND PATTERNS
442001-04	CLASS A PATCHES
701101-03	OFF-RD OPERATIONS, MULTILANE, 15' TO 24" FROM PAVEMENT EDGE
701106-02	OFF-RD OPERATIONS, MULTILANE, MORE THAN 15' AWAY
701400-06	APPROACH TO LANE CLOSURE, FREEWAY/EXPRESSWAY
701401-07	LANE CLOSURE, FREEWAY/EXPRESSWAY
	LANE CLOSURE, FREEWAY/EXPRESSWAY, WITH BARRIER
701406-06	LANE CLOSURE, FREEWAY/EXPRESSWAY, DAY OPERATION ONLY
701411-08	LANE CLOSURE, MULTILANE AT ENTRANCE OR EXIT RAMP, FOR SPEEDS > 45 MPH
701446-04	TWO LANE CLOSURE, FREEWAY/EXPRESSWAY
701456-02	PARTIAL EXIT RAMP CLOSURE FREEWAY/EXPRESSWAY
701901-02	TRAFFIC CONTROL DEVICES

**STATE OF ILLINOIS
DEPARTMENT OF TRANSPORTATION
DIVISION OF HIGHWAYS
DISTRICT 6**

EXAMINED 11/20 20 12
Bill Dwyer
ENGINEER OF OPERATIONS

EXAMINED OCT 25 20 12
Jimmy L. [Signature]
ENGINEER OF PROJECT IMPLEMENTATION

EXAMINED November 2 20 12
Laura R. Mlacnik
ENGINEER OF PROGRAM DEVELOPMENT

MIXTURE REQUIREMENTS		
THE FOLLOWING MIXTURE REQUIREMENTS ARE APPLICABLE FOR THIS PROJECT		
LOCATION:	SHOULDER REPAIR	STRUCTURE REPAIR
MIXTURE USE(S):	LOWER LIFT	TOP LIFT
AC/PG:	PG 64-22	PG 64-22
DESIGN AIR VOIDS:	4.0% @ N50	4.0% @ N50
MIXTURE COMPOSITION:	IL 19.0	IL 9.5
FRICTION AGGREGATE:	N/A	MIX "C"

				100% STATE CONSTR. CODE
CODE	ITEM	UNIT	TOTAL	ROADWAY 0005
44200541	CLASS A PATCHES, TYPE II, 9 INCH	SQ YD	386.9	386.9
44200545	CLASS A PATCHES, TYPE III, 9 INCH	SQ YD	139.3	139.3
44200547	CLASS A PATCHES, TYPE IV, 9 INCH	SQ YD	623.8	623.8
44213000	PATCHING REINFORCEMENT	SQ YD	1,150.0	1,150.0
44213200	SAW CUTS	FOOT	5,304.0	5,304.0
44213204	TIE BARS 3/4"	EACH	276.0	276.0
67100100	MOBILIZATION	L SUM	1.0	1.0
70100420	TRAFFIC CONTROL AND PROTECTION, STANDARD 701411	EACH	8.0	8.0
70100700	TRAFFIC CONTROL AND PROTECTION, STANDARD 701406	L SUM	1.0	1.0
70100800	TRAFFIC CONTROL AND PROTECTION, STANDARD 701401	L SUM	1.0	1.0
70100815	TRAFFIC CONTROL AND PROTECTION, STANDARD 701446	L SUM	1.0	1.0
70103815	TRAFFIC CONTROL SURVEILLANCE	CAL DA	15.0	15.0
70106800	CHANGEABLE MESSAGE SIGN	CAL MO	1.0	1.0
X4820110	HOT-MIX ASPHALT SHOULDER REMOVAL AND REPLACEMENT (SPECIAL)	SQ YD	100.0	100.0
14 70100825	TRAFFIC CONTROL AND PROTECTION, STANDARD 701456	L SUM	1.0	1.0

LOCATION	PATCHING SCHEDULE, CLASS A PATCHES				SAW CUTS			TIE BARS		PATCHING REINFORCEMENT						
	LENGTH (FOOT)		FOOT	SQ YD	(SQ YD)			(FOOT)		(EACH)		(SQ YD)				
	PASSING	DRIVING	WIDTH	FULL DEPTH	TY II	TY III	TY IV	TY II	TY III	TY IV	PASSING	DRIVING	PASSING	DRIVING		
ADAMS COUNTY																
13+02	12.00		12.00	16.0		16.0					72.0			16.0		
12+74	5.00		12.00	6.7	6.7						58.0			6.7		
12+44		8.00	12.00	10.7				10.7				64.0		10.7		
11+13		8.00	12.00	10.7				10.7				64.0		10.7		
11+01	15.00		12.00	20.0		20.0					78.0			20.0		
10+50		5.00	12.00	6.7				6.7				58.0		6.7		
8+48	48.00		12.00	64.0			64.0				144.0		25	64.0		
7+40	5.00		12.00	6.7	6.7						58.0			6.7		
7+07	8.00		12.00	10.7	10.7						64.0			10.7		
6+83		25.00	12.00	33.3					33.3			98.0	13	33.3		
6+83	25.00		12.00	33.3			33.3				98.0		13	33.3		
6+31	5.00		12.00	6.7	6.7						58.0			6.7		
6+15	10.00		12.00	13.3	13.3						68.0			13.3		
2+06		32.00	12.00	42.7					42.7			112.0	17	42.7		
1+74		5.00	12.00	6.7				6.7				58.0		6.7		
PIKE COUNTY																
1008+11	5.00		12.00	6.7	6.7						58.0			6.7		
1015+06	6.00		12.00	8.0	8.0						60.0			8.0		
1078+64		5.00	12.00	6.7				6.7				58.0		6.7		
1140+25		5.00	12.00	6.7				6.7				58.0		6.7		
1140+88		5.00	12.00	6.7				6.7				58.0		6.7		
1155+78		5.00	12.00	6.7				6.7				58.0		6.7		
1208+66		5.00	12.00	6.7				6.7				58.0		6.7		
1225+49		5.00	12.00	6.7				6.7				58.0		6.7		
1227+39		5.00	12.00	6.7				6.7				58.0		6.7		
1230+83		5.00	12.00	6.7				6.7				58.0		6.7		
1230+83	5.00		12.00	6.7	6.7						58.0			6.7		
1237+05	5.00		12.00	6.7	6.7						58.0			6.7		
1240+18		5.00	12.00	6.7				6.7				58.0		6.7		
1240+36		5.00	12.00	6.7				6.7				58.0		6.7		
1240+70		5.00	12.00	6.7				6.7				58.0		6.7		
1242+30		5.00	12.00	6.7				6.7				58.0		6.7		
1266+96		5.00	12.00	6.7				6.7				58.0		6.7		
1335+62		22.00	12.00	29.3					29.3			92.0	12	29.3		
1335+62	18.00		12.00	24.0		24.0					84.0			24.0		
1359+46		8.50	12.00	11.3				11.3				65.0		11.3		
1389+32		18.00	12.00	24.0					24.0			84.0		24.0		
1390+79		5.00	12.00	6.7				6.7				58.0		6.7		
1391+98		5.00	12.00	6.7	6.7			6.7				58.0		6.7		
23+10 **		5.00	16.00	8.9				8.9				58.0		8.9		
TOTALS				520.9	78.8	60.0	97.3	155.5	24.0	105.3	1016.0	1623.0	38	42	236.1	284.8

** ENTRANCE OF RAMP

LOCATION	PATCHING SCHEDULE, CLASS A PATCHES									SAW CUTS		TIE BARS		PATCHING REINFORCEMENT		
	LENGTH (FOOT)		FOOT	SQ YD	(SQ YD)											
	PASSING	DRIVING	WIDTH	FULL DEPTH	TY II	TY III	TY IV	TY II	TY III	TY IV	PASSING	DRIVING	PASSING	DRIVING	PASSING	DRIVING
PIKE COUNTY																
1358+95		89.00	6.00	59.3						59.3		226.0		45		59.3
1358+90	100.00		12.00	133.3			133.3				248.0		51		133.3	
1357+00	46.00		6.00	30.7			30.7				140.0		24		30.7	
1356+10	25.00		6.00	16.7		16.7					98.0		13		16.7	
1332+58		7.00	12.00	9.3				9.3				62.0				9.3
1331+77 **		20.50	16.00	36.4						36.4		89.0		11		36.4
1310+35		5.00	12.00	6.7				6.7				58.0				6.7
1307+76		5.00	12.00	6.7				6.7				58.0				6.7
1280+81		5.00	12.00	6.7				6.7				58.0				6.7
1242+91		5.00	12.00	6.7				6.7				58.0				6.7
1242+22		5.00	12.00	6.7				6.7				58.0				6.7
1241+20		5.00	12.00	6.7				6.7				58.0				6.7
1231+41		5.00	12.00	6.7				6.7				58.0				6.7
1231+41	5.00		12.00	6.7	6.7						58.0				6.7	
1220+90		5.00	12.00	6.7				6.7				58.0				6.7
1220+90	5.00		12.00	6.7	6.7						58.0				6.7	
1214+35		5.00	12.00	6.7				6.7				58.0				6.7
1214+35	5.00		12.00	6.7	6.7						58.0				6.7	
1209+90		5.00	12.00	6.7				6.7				58.0				6.7
1209+59		5.00	12.00	6.7				6.7				58.0				6.7
1209+30		5.00	12.00	6.7				6.7				58.0				6.7
1158+65		5.00	12.00	6.7				6.7				58.0				6.7
1135+81		5.00	12.00	6.7				6.7				58.0				6.7
1133+37		5.00	12.00	6.7				6.7				58.0				6.7
1088+54		51.00	12.00	68.0						68.0		150.0		26		68.0
1089+20		5.00	12.00	6.7				6.7				58.0				6.7
1065+78 **		12.00	16.00	21.3					21.3			72.0				21.3
1028+90		7.00	12.00	9.3				9.3				62.0				9.3
1028+21		20.00	12.00	26.7						26.7		88.0				26.7
1027+88		21.00	12.00	28.0						28.0		90.0		11		28.0
1027+80	29.00		12.00	38.7			38.7				106.0		15		38.7	
1027+30	5.00		12.00	6.7	6.7						58.0				6.7	
ADAMS COUNTY																
75+77		13.0	12.00	17.3					17.3			74.0				17.3
TOTALS				629.0	26.8	16.7	202.7	125.8	38.6	218.5	824.0	1841.0	103	93	246.2	382.9
WESTBOUND TOTAL				629.0	26.8	16.7	202.7	125.8	38.6	218.5	824.0	1841.0	103.0	93.0	246.2	382.9
EASTBOUND TOTAL				520.9	78.8	60.0	97.3	155.5	24.0	105.3	1016.0	1623.0	38.0	42.0	236.1	284.8
TOTAL				1149.9	TY II: 386.9	TY III: 139.3	TY IV: 623.8	5304.0	276.0	1149.9						



BEGIN PROJECT
STA. 15+00

STATION EQUATION
STA. 0+00.20 BK
STA. 999+99.80 AH

TO QUINCY

END PROJECT
STA. 1375+00

STATE OF ILLINOIS
DEPARTMENT OF TRANSPORTATION

LOCATION MAP

FILE NAME *	USER NAME * shahdm	DESIGNED -	REVISED -
Default	shh-detailed.dgn	DRAWN -	REVISED -
	PLOT SCALE * 40.0000' / in.	CHECKED -	REVISED -
	PLOT DATE = Dec-10-2012 08:53:34M	DATE -	REVISED -

SCALE:	SHEET	OF	SHEETS	STA.	TO	STA.
--------	-------	----	--------	------	----	------

F.A.I. RTE.	SECTION	COUNTY	TOTAL SHEETS	SHEET NO.
72	*	PIKE-ADAMS	6	6
CONTRACT NO. 72F61				
ILLINOIS FED. AID PROJECT				

* (75-1)-2.(75-2)-1.(75-3)

