

STATE OF ILLINOIS  
DEPARTMENT OF TRANSPORTATION  
DIVISION OF HIGHWAYS  
**PROPOSED  
CONTRACT MAINTENANCE**

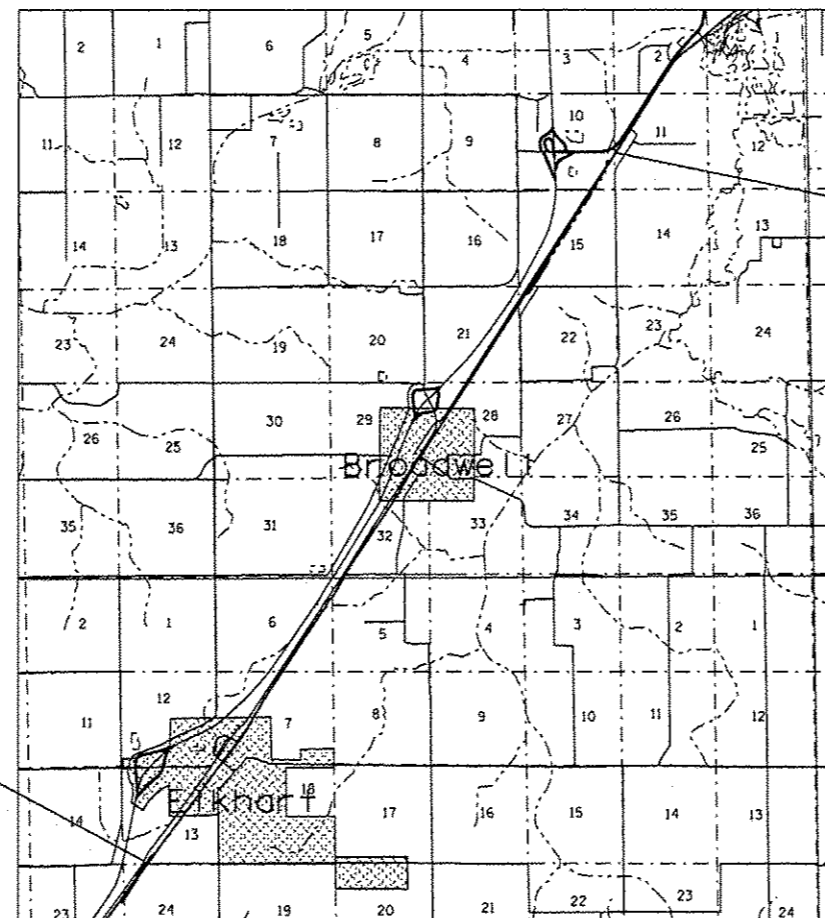
FOR INDEX OF SHEETS, SEE SHEET NO. 2

FAS 566 (I-55 F/OLD RTE 66)  
SECTION (23,24)I-1

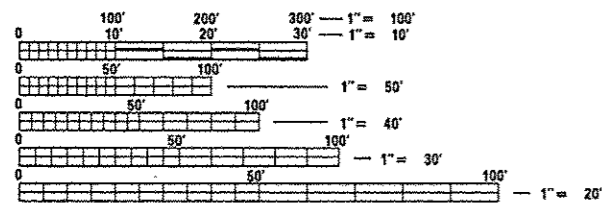
LOGAN COUNTY

C-96-011-13

R 3 W



ADT = 1,000(90)



FULL SIZE PLANS HAVE BEEN PREPARED USING STANDARD ENGINEERING SCALES. REDUCED SIZED PLANS WILL NOT CONFORM TO STANDARD SCALES. IN MAKING MEASUREMENTS ON REDUCED PLANS, THE ABOVE SCALES MAY BE USED.

J.U.L.I.E.  
JOINT UTILITY LOCATION INFORMATION FOR EXCAVATION  
1-800-892-0123  
OR 811

BEGIN PROJECT  
STA. 771 + 35.00

BEGIN PROJECT  
STA. 3 + 46.00

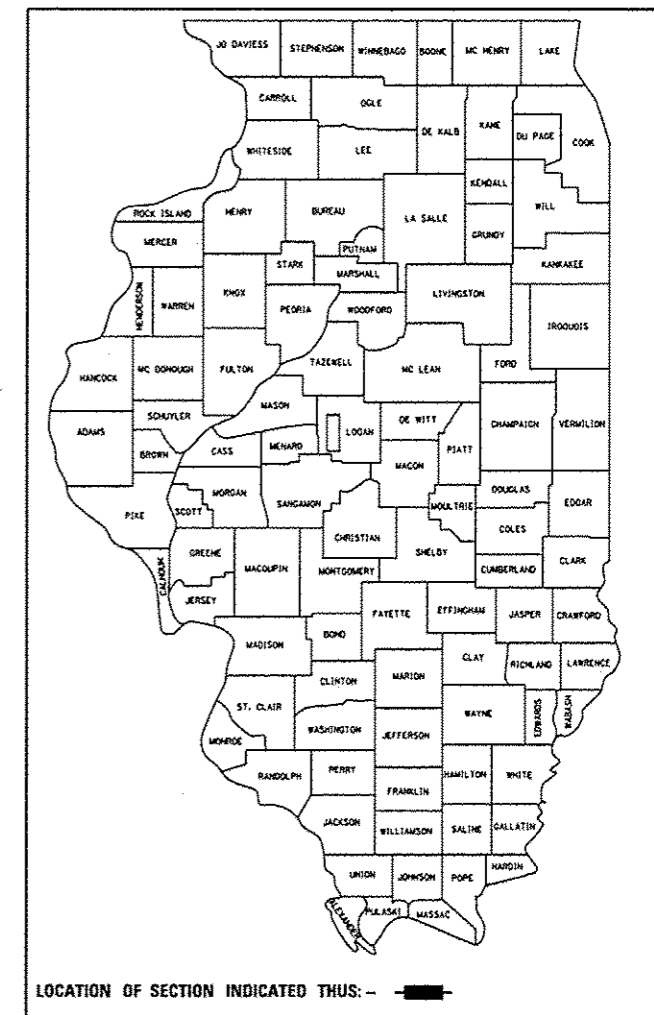
PLAN AND CONTRACT TECHNICIAN  
TIMOTHY SHARP (217)782-7743

CONTRACT NO. 72F79

GROSS LENGTH = 46,726.89 FT. = 8.850 MILES

F.A.S. RTE.	SECTION	COUNTY	TOTAL SHEETS	SHEET NO.
566	(23,24)I-1	LOGAN	6	1
FED. ROAD DIST. NO.	ILLINOIS	CONTRACT NO. 72F79		

D-96-011-13



LOCATION OF SECTION INDICATED THUS: ———

STATE OF ILLINOIS  
DEPARTMENT OF TRANSPORTATION  
DIVISION OF HIGHWAYS

SUBMITTED December 19 20 12  
Reg. Z Omer  
DEPUTY DIRECTOR OF HIGHWAYS, REGION ENGINEER

Feb 1 20 13  
John D. Baranowski, P.E. Jr.  
acting ENGINEER OF DESIGN AND ENVIRONMENT

Feb 1 20 13  
Omer Omer, P.E. Jr.  
DIRECTOR OF HIGHWAYS, CHIEF ENGINEER

**PRINTED BY THE AUTHORITY  
OF THE STATE OF ILLINOIS**