

STATE OF ILLINOIS
DEPARTMENT OF TRANSPORTATION
DIVISION OF HIGHWAYS
PROPOSED
CONTRACT MAINTENANCE

F.A.S. RTE.	SECTION	COUNTY	TOTAL SHEETS	SHEET NO.
566	(23,24)I-1	LOGAN	6	1
FED. ROAD DIST. NO.	ILLINOIS	CONTRACT NO. 72F79		

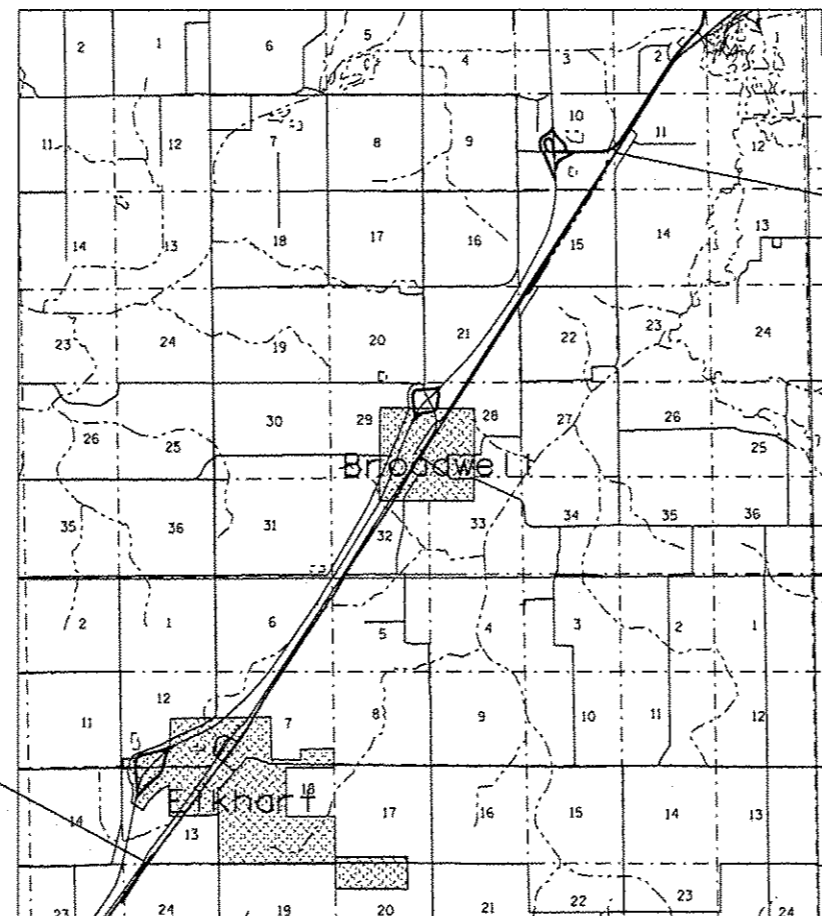
FOR INDEX OF SHEETS, SEE SHEET NO. 2

FAS 566 (I-55 FROLD RTE 66)
SECTION (23,24)I-1

LOGAN COUNTY

C-96-011-13

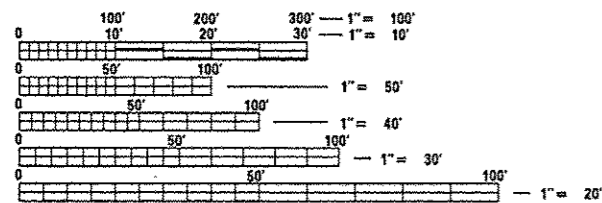
R 3 W



BEGIN PROJECT
STA. 3 + 46.00

BEGIN PROJECT
STA. 771 + 35.00

ADT = 1,000(90)



FULL SIZE PLANS HAVE BEEN PREPARED USING STANDARD ENGINEERING SCALES. REDUCED SIZED PLANS WILL NOT CONFORM TO STANDARD SCALES. IN MAKING MEASUREMENTS ON REDUCED PLANS, THE ABOVE SCALES MAY BE USED.

J.U.L.I.E.
 JOINT UTILITY LOCATION INFORMATION FOR EXCAVATION
 1-800-892-0123
 OR 811

PLAN AND CONTRACT TECHNICIAN
TIMOTHY SHARP (217)782-7743

CONTRACT NO. 72F79

GROSS LENGTH = 46,726.89 FT. = 8.850 MILES

STATE OF ILLINOIS
 DEPARTMENT OF TRANSPORTATION
 DIVISION OF HIGHWAYS

SUBMITTED December 19 20 12
Reg. Z Omer
 DEPUTY DIRECTOR OF HIGHWAYS, REGION ENGINEER

Feb 1 20 13
John D. Baranowski, P.E. J.D.
 acting ENGINEER OF DESIGN AND ENVIRONMENT

Feb 1 20 13
Omer Omer, P.E. J.D.
 DIRECTOR OF HIGHWAYS, CHIEF ENGINEER

PRINTED BY THE AUTHORITY
OF THE STATE OF ILLINOIS

INDEX OF SHEETS

1. COVER
2. INDEX OF SHEETS, GENERAL NOTES, AND HIGHWAY STANDARDS
3. SUMMARY OF QUANTITIES
4. TYPICAL SECTIONS
5. SCHEDULES
6. PLAN

HIGHWAY STANDARDS

- 701001-02
- 701006-04
- 701201-04
- 701301-04
- 701306-03
- 701311-03
- 701501-06
- 701901-02
- 780001-03

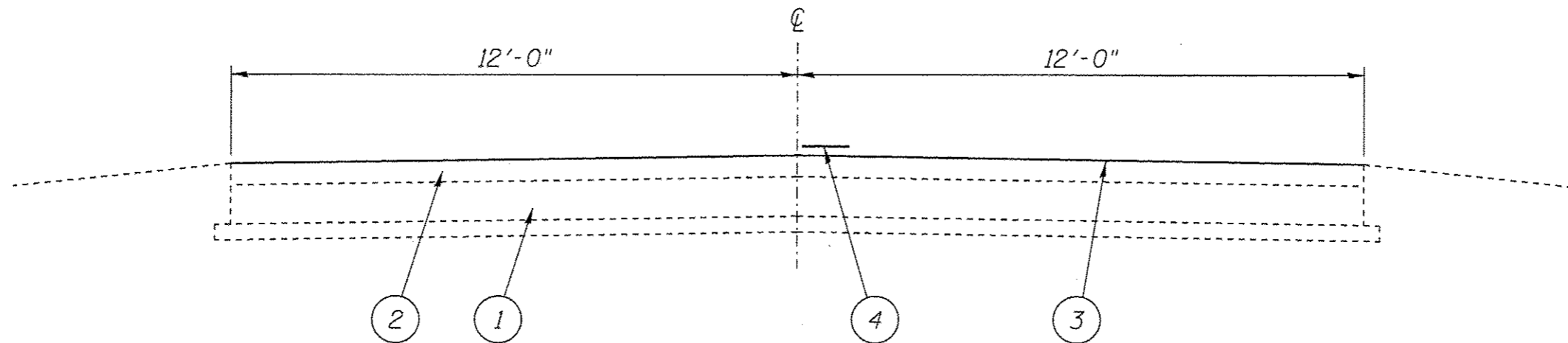
GENERAL NOTES

1. THE CONTRACTOR SHALL GIVE IDOT OPERATIONS TWO WEEKS NOTICE PRIOR TO STARTING WORK IN ORDER FOR IDOT TO COMPLETE PATCHING.
2. ANY REFERENCE TO THE STANDARDS THROUGHOUT THE PLANS SHALL BE INTERPRETED TO BE THE LATEST STANDARDS OF THE DEPARTMENT AS INCLUDED IN THE PLANS.
3. NO EXCAVATION IS ANTICIPATED ON THIS PROJECT. SHOULD ANY EXCAVATION BE REQUIRED, J.U.L.I.E. SHALL BE NOTIFIED A MINIMUM OF 48 HOURS IN ADVANCE (800) 892-0123.
4. ALL CONFLICTING EXISTING STRIPING SHALL BE REMOVED.
5. ALL PAVEMENT MARKINGS, AND NO PASSING ZONES SHALL BE FIELD VERIFIED BY DISTRICT 6 OPERATIONS (785-5312) 14 DAYS PRIOR TO FINAL PAVEMENT MARKINGS.
6. PAVEMENT MARKINGS SHALL NOT BE APPLIED UNTIL AGGREGATE IS PROPERLY SEATED.
7. ADDITIONAL BROOMING (UP TO 3 TIMES) SHALL BE REQUIRED AT THE DISCRETION OF THE ENGINEER, INCLUDING THE DAY OF PERMANENT PAVEMENT MARKING.
8. LOOSE ROCK/GRAVEL AND SUGGESTED 45 mph SIGNS SHALL BE ERECTED AND MAINTAINED UNTIL THE PERMANENT PAVEMENT MARKINGS HAVE BEEN COMPLETED.
9. TEMPORARY PAVEMENT MARKING - LINE 5' SHALL BE PAINT, MARKING TAPE WILL NOT BE ALLOWED.

STATE OF ILLINOIS DEPARTMENT OF TRANSPORTATION DIVISION OF HIGHWAYS DISTRICT 6	
EXAMINED <u>12/18</u>	20 <u>12</u>
<i>William Boyd</i> ENGINEER OF OPERATIONS	
EXAMINED <u>12/13</u>	20 <u>12</u>
<i>Jimmy J. [Signature]</i> ENGINEER OF PROJECT IMPLEMENTATION	
EXAMINED <u>Dec 14</u>	20 <u>12</u>
<i>ARMU</i> ENGINEER OF PROGRAM DEVELOPMENT	

FILE NAME *	USER NAME * Sherptd	DESIGNED -	REVISED -	STATE OF ILLINOIS DEPARTMENT OF TRANSPORTATION	INDEX OF SHEETS, HIGHWAY STANDARDS AND GENERAL NOTES	F.A.S. RTE.	SECTION	COUNTY	TOTAL SHEETS	SHEET NO.	
ci:\pw_work\pwidot\sherptd\0317779\06722	79-shr*gennote.dgn	DRAWN -	REVISED -			566	(23,24)-1	LOGAN	6	2	
Default	PLOT SCALE * 2.0000' / in.	CHECKED -	REVISED -			CONTRACT NO. 72F79					
	PLOT DATE * Dec-18-2012 06:39:57AM	DATE -	REVISED -			SCALE:	SHEET 1 OF 1 SHEETS	STA.	TO STA.	ILLINOIS FED. AID PROJECT	

CODE NO.	ITEM	UNIT	TOTAL QUANTITY	CONSTR. CODE
				100% STATE
				ROADWAY
				0005
				S. N.
35800100	PREPARATION OF BASE	SQ YD	137,066	137,066
40300400	BITUMINOUS MATERIALS (COVER AND SEAL COATS)	TON	521	521
40300500	COVER COAT AGGREGATE	TON	1,371	1,371
40300600	SEAL COAT AGGREGATE	TON	1,371	1,371
67100100	MOBILIZATION	L SUM	1	1
70100450	TRAFFIC CONTROL AND PROTECTION, STANDARD 701201	L SUM	1	1
70100460	TRAFFIC CONTROL AND PROTECTION, STANDARD 701306	L SUM	1	1
70102620	TRAFFIC CONTROL AND PROTECTION, STANDARD 701501	L SUM	1	1
70300230	TEMPORARY PAVEMENT MARKING - LINE 5"	FOOT	4,680	4,680
78001120	PAINT PAVEMENT MARKING - LINE 5"	FOOT	12,937	12,937



STA. 771+35.00 TO 1049+00.00
 STA. EQ. 1049+00.00bk=29+47.00ah
 STA. 29+47.00 TO 36+60.39
 STA. EQ. 36+60.39bk=0+00.00ah
 STA. 0+00.00 TO 3+23.64
 STA. EQ. 3+23.64bk=1059+10.00
 STA. 1059+00.00 TO 1235+70.00
 STA. EQ. 1235+70.00bk=5+10.86ah
 STA. 5+10.86 TO 3+46.00

LEGEND

- 1- EXIST. P.C.C. PAVEMENT 10"
- 2- EXIST. HOT-MIX ASPHALT SURFACE
- 3- PROP. BIT. SURF. TREATMENT (CL. A-2)
- 4- PAINT PAVEMENT MARKING - LINE 5"

FILE NAME * oi\pw_work\pvidot\shorptd\0317779\0672	USER NAME * Sharptd	DESIGNED -	REVISED -	STATE OF ILLINOIS DEPARTMENT OF TRANSPORTATION	TYPICAL SECTION		F.A.S. RTE.	SECTION	COUNTY	TOTAL SHEETS	SHEET NO.
	79-shr-typico1.dgn	DRAWN -	REVISED -				566	(23,24)-1	LOGAN	6	4
PLOT SCALE * 3.0000' / 1"	CHECKED -	REVISED -			SCALE: SHEET 1 OF 1 SHEETS STA. TO STA.		CONTRACT NO. 72F79		ILLINOIS FED. AID PROJECT		
SHT.PLAN	PLOT DATE * Nov-27-2012 00:20:21AM	DATE -	REVISED -								

PAVEMENT MARKING SCHEDULE		
STATION	TYPE	PAINT PAV'T
		MRK - LINE 5"
		YELLOW
STA. 771+35.00 TO 1049+00.00	SKIP DASH	6,950 FT
LT. & RT. STA. 36+60.39 TO 29+47.00	NO PASS	1,427 FT
STA. 0+00.00 TO 3+23.64	SKIP DASH	80 FT
STA. 1059+10.00 TO 1235+70.00	SKIP DASH	4,440 FT
STA. 5+10.86 TO 3+46.00	SKIP DASH	40 FT
TOTALS		12,937 FT



BEGIN PROJECT
STA. 771+35.00

END PROJECT
STA. 3+46.00

STA. EQ. 1235+70.00bk
= 5+10.86ah

STA. EQ. 3+23.64bk
= 1059+10.00ah

STA. EQ. 29+47.00bk
= 0+00.00ah

STA. EQ. 1049+00.00bk
= 36+60.39ah

FILE NAME *	USER NAME * Sherptd	DESIGNED -	REVISED -
o:\pr_work\pwidot\sherptd\0317779\067279-plansh.dgn		DRAWN -	REVISED -
	PLT SCALE * 3.0000 / / in.	CHECKED -	REVISED -
SMT_PLAN	PLT DATE * Nov-27-2012 07:28:47AM	DATE -	REVISED -

STATE OF ILLINOIS
DEPARTMENT OF TRANSPORTATION

LOCATION MAP

SCALE: _____ SHEET 1 OF 1 SHEETS STA. _____ TO STA. _____

F.A.S. RTE.	SECTION	COUNTY	TOTAL SHEETS	SHEET NO.
566	14IRS-5	LOGAN	6	6
CONTRACT NO. 72F79			ILLINOIS FED. AID PROJECT	