

F.A.P. RTE.	SECTION	COUNTY	TOTAL SHEETS	SHEET NO.
662	(3)I-13	SANGAMON	13	1
		ILLINOIS	CONTRACT NO. 72F86	

INDEX OF SHEETS

- 1 COVER SHEET
- 2 GENERAL NOTES
- 3 SUMMARY OF QUANTITIES
- 4-5 SCHEDULE OF QUANTITIES
- 6 TYPICAL SECTIONS
- 7-9 MAINTENANCE OF TRAFFIC
- 10-11 PLAN AND PROFILE SHEETS
- 12 BUTT-JOINT DETAILS
- 13 DETAILS

STATE OF ILLINOIS
DEPARTMENT OF TRANSPORTATION
DIVISION OF HIGHWAYS

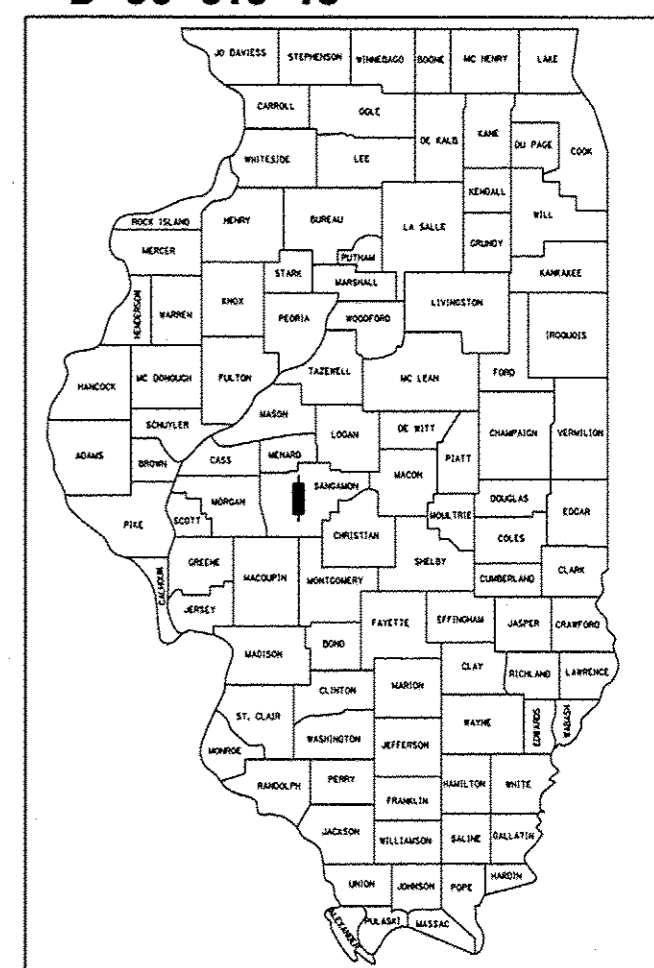
PROPOSED
HIGHWAY PLANS

FAP ROUTE 662 (IL 4 - VETERANS PARKWAY)
SECTION (3)I-13

BRIDGE APPROACH ROADWAY
D.E. MISCELLANEOUS
SANGAMON COUNTY

C-96-019-13

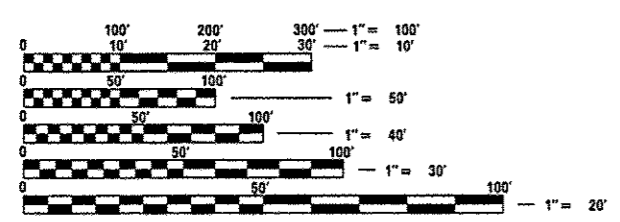
D-96-019-13



LOCATION OF SECTION INDICATED THUS: — ■ —
HIGHWAY CLASSIFICATION: OTHER PRINCIPAL ARTERIAL

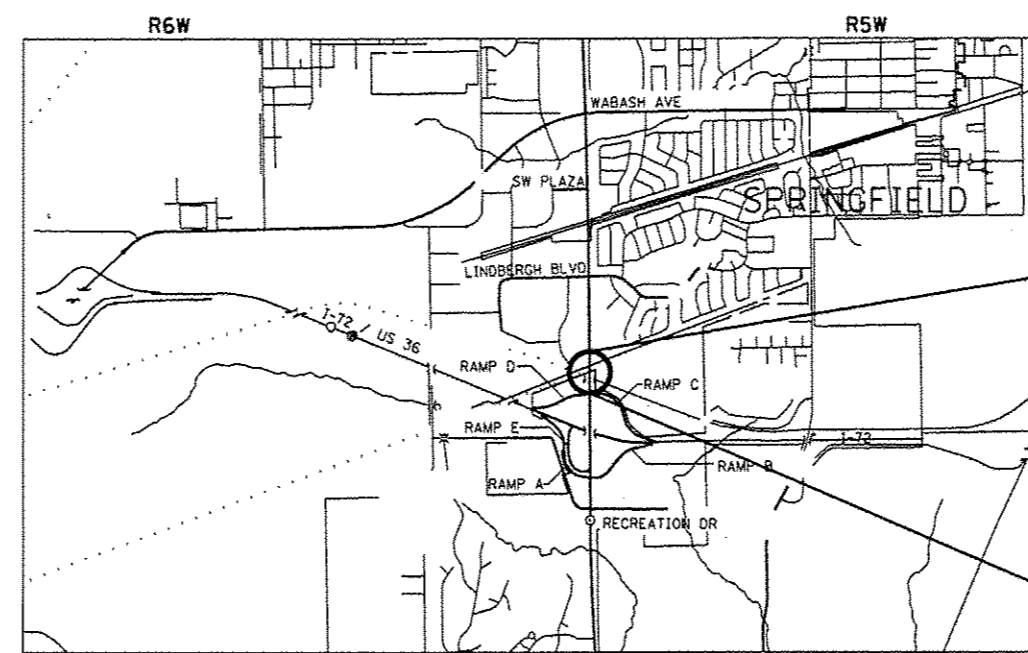
STANDARDS

000001-06	701422-05
280001-07	701901-02
606001-05	780001-03
630001-10	781001-03
701101-03	



FULL SIZE PLANS HAVE BEEN PREPARED USING STANDARD ENGINEERING SCALES. REDUCED SIZED PLANS WILL NOT CONFORM TO STANDARD SCALES. IN MAKING MEASUREMENTS ON REDUCED PLANS, THE ABOVE SCALES MAY BE USED.

J.U.L.I.E.
 JOINT UTILITY LOCATION INFORMATION FOR EXCAVATION
 1-800-892-0123
 OR 811



BEGIN SECTION
 STA. 478+45.00

END SECTION
 STA. 485+44.00

LOCATION MAP

GROSS LENGTH = 1,374.00 FT. = 0.260 MILE
 NET LENGTH = 492.58 FT. = 0.093 MILE

TRAFFIC COUNT

ADT=32,400 (2011)
 PV=30,699 (94.75%)
 SU=1,150 (3.55%)
 MU=551 (1.7%)

SENIOR TEAM ENGINEER: MARK DUST (217) 785-0597
 TEAM MANAGER: KEN ANDERSON (217) 524-7546
 CONTRACT NO. 72F86

STATE OF ILLINOIS
 DEPARTMENT OF TRANSPORTATION
 DIVISION OF HIGHWAYS

SUBMITTED Dec 20 20 12
Roger J. Dinkler
 DEPUTY DIRECTOR OF HIGHWAYS, REGION ENGINEER

Feb 1 20 13
John D. Baranzoli, P.E.
 ENGINEER OF DESIGN AND ENVIRONMENT

Feb 1 20 13
Omer Osman, P.E.
 DIRECTOR OF HIGHWAYS, CHIEF ENGINEER

PRINTED BY THE AUTHORITY
OF THE STATE OF ILLINOIS