

F.A.P. RTE.	SECTION	COUNTY	TOTAL SHEETS	SHEET NO.
662	(3)I-13	SANGAMON	13	1
		ILLINOIS	CONTRACT NO. 72F86	

INDEX OF SHEETS

- 1 COVER SHEET
- 2 GENERAL NOTES
- 3 SUMMARY OF QUANTITIES
- 4-5 SCHEDULE OF QUANTITIES
- 6 TYPICAL SECTIONS
- 7-9 MAINTENANCE OF TRAFFIC
- 10-11 PLAN AND PROFILE SHEETS
- 12 BUTT-JOINT DETAILS
- 13 DETAILS

03-08-13 LETTING ITEM 024

STATE OF ILLINOIS
DEPARTMENT OF TRANSPORTATION
DIVISION OF HIGHWAYS

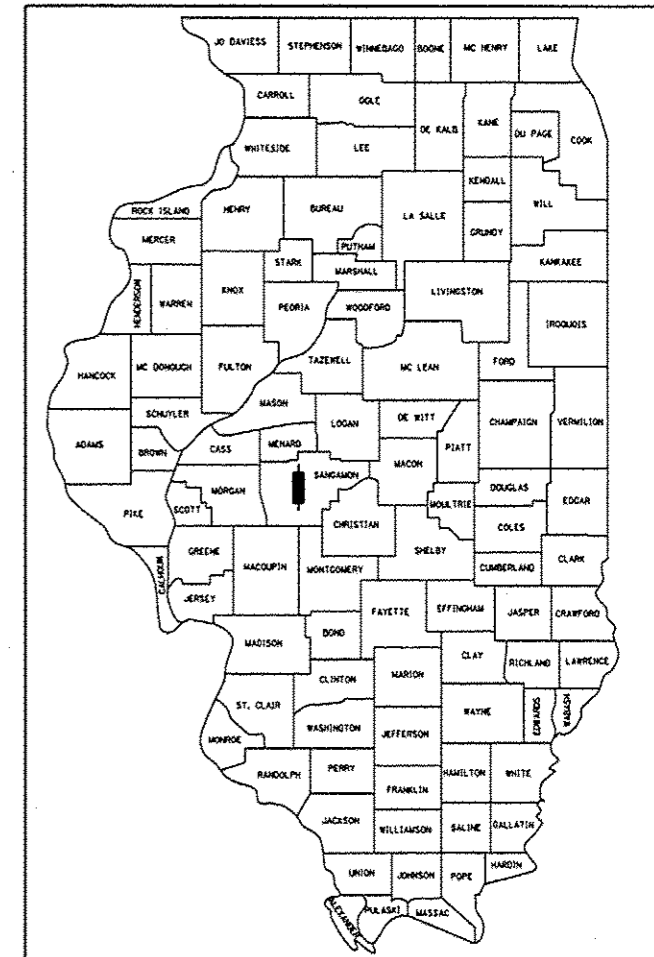
PROPOSED
HIGHWAY PLANS

FAP ROUTE 662 (IL 4 - VETERANS PARKWAY)
SECTION (3)I-13

BRIDGE APPROACH ROADWAY
D.E. MISCELLANEOUS
SANGAMON COUNTY

C-96-019-13

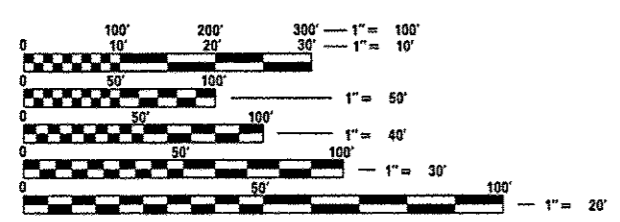
D-96-019-13



LOCATION OF SECTION INDICATED THUS: - -
HIGHWAY CLASSIFICATION: OTHER PRINCIPAL ARTERIAL

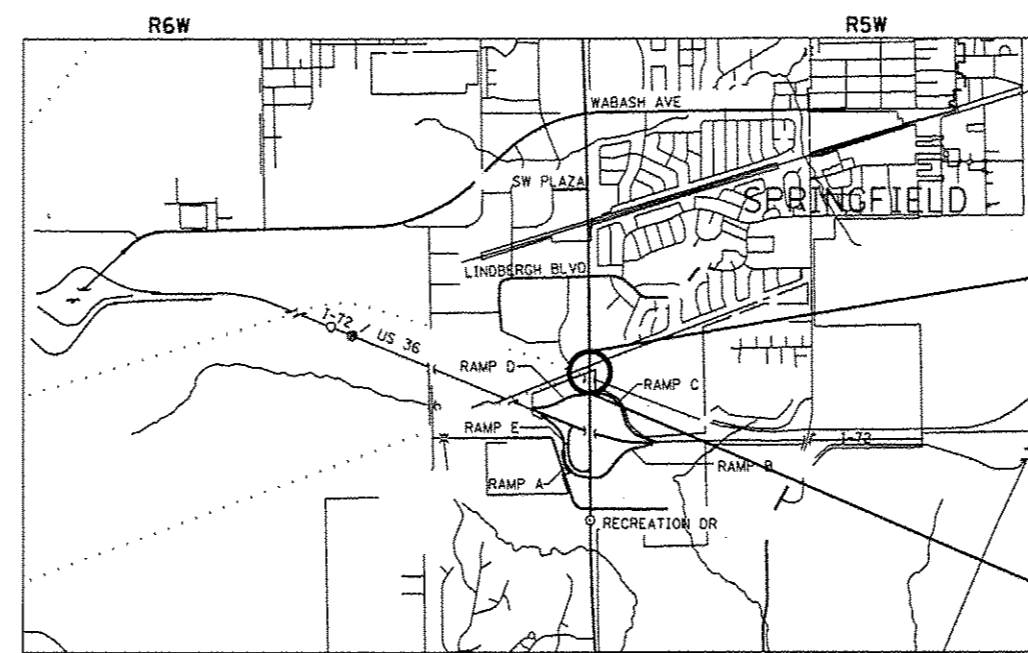
STANDARDS

000001-06	701422-05
280001-07	701901-02
606001-05	780001-03
630001-10	781001-03
701101-03	



FULL SIZE PLANS HAVE BEEN PREPARED USING STANDARD ENGINEERING SCALES. REDUCED SIZED PLANS WILL NOT CONFORM TO STANDARD SCALES. IN MAKING MEASUREMENTS ON REDUCED PLANS, THE ABOVE SCALES MAY BE USED.

J.U.L.I.E.
 JOINT UTILITY LOCATION INFORMATION FOR EXCAVATION
 1-800-892-0123
 OR 811



BEGIN SECTION
 STA. 478+45.00

END SECTION
 STA. 485+44.00

LOCATION MAP

GROSS LENGTH = 1,374.00 FT. = 0.260 MILE
 NET LENGTH = 492.58 FT. = 0.093 MILE

TRAFFIC COUNT

ADT=32,400 (2011)
 PV=30,699 (94.75%)
 SU=1,150 (3.55%)
 MU=551 (1.7%)

SENIOR TEAM ENGINEER: MARK DUST (217) 785-0597
 TEAM MANAGER: KEN ANDERSON (217) 524-7546
 CONTRACT NO. 72F86

STATE OF ILLINOIS
 DEPARTMENT OF TRANSPORTATION
 DIVISION OF HIGHWAYS

SUBMITTED Dec 20 2012
Roger J. Dinkler
 DEPUTY DIRECTOR OF HIGHWAYS, REGION ENGINEER

Feb 1 2013
John D. Baranzoli, P.E.
 ENGINEER OF DESIGN AND ENVIRONMENT

Feb 1 2013
Omer Osman, P.E.
 DIRECTOR OF HIGHWAYS, CHIEF ENGINEER

PRINTED BY THE AUTHORITY
OF THE STATE OF ILLINOIS

GENERAL NOTES

1. ANY REFERENCE TO A STANDARD IN THESE PLANS SHALL BE INTERPRETED TO MEAN THE EDITION AS INDICATED BY THE SUB NUMBER LISTED IN THE INDEX OF SHEETS OR THE COPY OF THE STANDARD INCLUDED IN THESE PLANS.
2. IN ADDITION TO FIELD SURVEYS, PLAN DIMENSIONS AND DETAILS RELATIVE TO THE EXISTING FACILITIES HAVE BEEN TAKEN FROM EXISTING PLANS AND ARE SUBJECT TO CONSTRUCTION VARIATIONS. IT SHALL BE THE CONTRACTOR'S RESPONSIBILITY TO VERIFY SUCH DIMENSIONS AND DETAILS IN THE FIELD. SUCH VARIATIONS SHALL NOT BE A CAUSE FOR ADDITIONAL COMPENSATION DUE TO A CHANGE IN THE SCOPE OF WORK; HOWEVER, THE CONTRACTOR WILL BE PAID FOR THE QUANTITY ACTUALLY FURNISHED AT THE UNIT PRICE BID FOR THE WORK.
3. THE CONTRACTOR SHALL BE RESPONSIBLE FOR PROTECTING UTILITY PROPERTY FROM CONSTRUCTION OPERATIONS, AS OUTLINED IN ARTICLE 107.31 OF THE STANDARD SPECIFICATIONS. THE J.U.L.I.E. NUMBER IS 1-800-892-0123. A MINIMUM OF 48 HOURS ADVANCE NOTICE IS REQUIRED.
4. THE THICKNESS OF BITUMINOUS MIXTURES SHOWN ON THE PLANS IS THE NOMINAL THICKNESS. DEVIATIONS FROM THE NOMINAL THICKNESS WILL BE PERMITTED WHEN SUCH DEVIATIONS OCCUR DUE TO IRREGULARITIES IN THE EXISTING SURFACE OR BASE ON WHICH THE BITUMINOUS MIXTURE IS PLACED.
5. ALL SAW CUTS, NECESSARY TO COMPLETE THE WORK DETAILED IN THESE PLANS, SHALL BE INCLUDED IN THE COST FOR THE VARIOUS PAY ITEMS INVOLVED. THE MINIMUM SAW CUT DEPTH IN THE PAVEMENT SHALL BE 1 1/2 " UNLESS OTHERWISE SPECIFIED IN A DETAIL SHOWN IN THE PLANS.
6. UNLESS DIRECTED BY THE ENGINEER, PAVEMENT MARKING LINES SHALL NOT BE LAID DIRECTLY OVER A LONGITUDINAL CRACK OR JOINT NOR OVER A TAR OR ASPHALT PAINTED LINE. THE EDGE OF A CENTERLINE OR LANE LINE SHALL BE OFFSET A MINIMUM DISTANCE OF 2" FROM A LONGITUDINAL CRACK OR JOINT. EDGE LINES SHALL BE APPROXIMATELY 2" FROM THE EDGE LINE OF PAVEMENT. SEE SECTION 780 OF THE STANDARD SPECIFICATIONS FOR TRAFFIC CONTROL ITEMS.
7. THE FOLLOWING RATES OF APPLICATION HAVE BEEN USED TO CALCULATE THE PLAN QUANTITIES:
 BITUMINOUS MATERIALS (PRIME COAT) 0.00038 TON/SQ. YD. (ON PAVEMENT)
 BITUMINOUS MATERIALS (PRIME COAT) 0.001425 TON/SQ. YD. (ON AGG.)
 AGGREGATE PRIME COAT 0.002 TON/SQ. YD.
 BITUMINOUS CONCRETE SURFACE / BINDER 0.056 TON/SQ. YD. PER 1"
 AGGREGATE MATERIAL 2.05 TON/CU. YD.
8. THE EXISTING ROAD SIGNS THAT INTERFERE WITH CONSTRUCTION WILL BE REMOVED OR RELOCATED AS DIRECTED BY THE ENGINEER. AFTER THE CONSTRUCTION IS COMPLETED, THE CONTRACTOR WILL REPLACE THE SIGNS AS DIRECTED BY THE ENGINEER. THIS WORK WILL NOT BE PAID SEPARATELY BUT SHALL BE CONSIDERED INCLUDED IN THE CONTRACT, AND NO COMPENSATION WILL BE ALLOWED.

COMMITMENTS

1. THE RESIDENT ENGINEER SHALL CONTACT STUDIES & PLANS CONCERNING ANY MAJOR PLAN CHANGE. TO MAKE SURE NO PREVIOUS COMMITMENTS (NOT LISTED) WERE MADE AFFECTING THE DESIGN AND ALLOW AN IMPROVED DESIGN FOR FUTURE PROJECTS.

THE FOLLOWING MIXTURE REQUIREMENTS ARE APPLICABLE FOR THIS PROJECT:

MIXTURE USE(S):	HMA SURFACE COURSE	HMA SHOULDER	HMA LEVEL BINDER
PG:	SBS PG 70-22	PG 64-22	PG 64-22
DESIGN AIR VOIDS:	4.0% @ N 90	4.0% @ N 50	4.0% @ N 90
MIXTURE COMPOSITION: (GRADATION MIXTURE)	IL 9.5	IL 9.5	IL 9.5
FRICITION AGGREGATE:	MIX "E"	MIX "C"	N/A

DISTRICT SIX	
EXAMINED <u>12 / 10</u> 20 <u>12</u> <i>William A. King</i>	
OPERATIONS ENGINEER	
EXAMINED <u>DEC 13</u> 20 <u>12</u> <i>Tom F. L.</i>	
PROJECT IMPLEMENTATION ENGINEER	
EXAMINED <u>Dec. 14</u> 20 <u>12</u> <i>ARML</i>	
PROGRAM DEVELOPMENT ENGINEER	

SUBBASE GRANULAR MATERIAL, TYPE B		
LOCATION STATION TO STATION	LENGTH (FT)	SUBBASE GRAN. MAT. TYPE B (TON)
IL 4 (SOUTH BOUND)		
STA. 479+00.00 LT TO STA. 479+49.00 LT	49.00	6.5
STA. 479+23.00 RT TO STA. 479+64.00 RT	41.00	6.5
TOTAL		13.0

PAVEMENT REMOVAL SCHEDULE					
LOCATION STATION TO STATION	LENGTH (FT)	WIDTH (FT)	MATERIAL	PORTLAND CEMENT CONCRETE SURF. REM. (BUTT JOINT) (SQ YD)	
IL 4 (NORTH BOUND)					
STA. 478+45.00 TO STA. 478+65.00	20.00	41	HMA	91.0	
STA. 478+65.00 TO STA. 478+89.00	24.00	41	HMA	109.4	
STA. 478+90.00 TO STA. 479+13.73	24.00	41	CONC	109.6	
STA. 479+13.73 TO STA. 479+33.73	20.00	41	CONC	91.0	
OMISSION SN#084-0135					
STA. 480+87.83 TO STA. 481+17.83	30.00	41	CONC	137.5	
STA. 481+34.00 TO STA. 481+54.00	20.00	41	CONC	91.4	
STA. 481+53.86 TO STA. 481+83.86	30.00	41	CONC	137.5	
OMISSION SN#084-0189					
STA. 484+59.23 TO STA. 484+69.23	10.00	42	CONC	47.0	
STA. 484+89.00 TO STA. 485+10.00	21.00	42	HMA	93.4	
STA. 485+10.00 TO STA. 485+30.00	20.00	43	HMA	98.0	
IL 4 (SOUTH BOUND)					
STA. 478+55.00 TO STA. 478+85.00	30.00	42	HMA	140.0	
STA. 478+85.00 TO STA. 478+98.00	13.00	42	HMA	60.8	
STA. 479+55.35 TO STA. 479+65.35	10.00	42	CONC	47.0	
OMISSION SN#084-0134					
STA. 481+19.45 TO STA. 481+49.45	30.00	40	CONC	134.0	
OMISSION SN#084-0188					
STA. 484+47.30 TO STA. 484+62.30	15.00	44	CONC	73.0	
STA. 484+89.00 TO STA. 485+14.00	25.00	44	HMA	122.4	
STA. 485+14.00 TO STA. 485+44.00	30.00	44	HMA	147.0	
TOTAL				1730.0	

PAVEMENT SCHEDULE						
LOCATION STATION TO STATION	LENGTH (FT)	WIDTH (FT)	LEVELING BINDER (MM) N90 (TON)	POLYMERIZED HMA SURF. COURSE MIX "E" N90 (TON)	BIT. MAT. PRIME CT. (TON)	AGG. PRIME CT. (TON)
IL 4 (NORTH BOUND)						
STA. 478+45.00 TO STA. 479+33.73	88.73	24		20.0	0.11	0.50
OMISSION SN# 084-0135						
STA. 480+87.83 TO STA. 481+83.86	96.03	24		22.0	0.11	0.50
STA. 481+14.00 TO STA. 481+35.00	21.00	24	2.0			
OMISSION SN# 084-0189						
STA. 484+59.23 TO STA. 485+30.00	70.77	24		19.0	0.08	0.60
STA. 484+68.00 TO STA. 484+89.00	21.00	24	4.0			
IL 4 (SOUTH BOUND)						
STA. 478+55.00 TO STA. 479+65.35	110.35	24		25.0	0.12	0.60
STA. 478+98.00 TO STA. 479+60.00	62.00	24	12.0			
OMISSION SN# 084-0134						
STA. 481+19.45 TO STA. 481+49.45	30.00	24		9.0	0.06	0.20
OMISSION SN# 084-0188						
STA. 484+47.30 TO STA. 485+44.00	96.70	24		22.0	0.12	0.60
STA. 484+59.00 TO STA. 484+89.00	30.00	24	4.0			
TOTAL			22.0	117.0	0.6	3.0

TEMPORARY RAMPS			
LOCATION STATION	LENGTH (FT)	WIDTH (FT)	AREA (SQ YD)
MAINLINE			
IL 4 (NORTH BOUND)			
STA. 478+45.00	5	41	23.0
STA. 479+33.73	5	41	23.0
STA. 480+87.83	5	41	23.0
STA. 481+83.86	5	41	23.0
STA. 484+59.23	5	41	23.0
STA. 485+30.00	5	47	26.0
IL 4 (SOUTH BOUND)			
STA. 478+55.00	5	42	23.5
STA. 479+65.35	5	42	23.5
STA. 481+19.45	5	40	22.5
STA. 481+49.45	5	40	22.5
STA. 484+47.30	5	44	24.5
STA. 485+44.00	5	44	24.5
TOTAL			282.0

PAVED SHOULDER REMOVAL			
LOCATION STATION TO STATION	LENGTH (FT)	WIDTH (FT)	PAVED SHOULDER REMOVAL (SQ YD)
IL 4 (SOUTH BOUND)			
STA. 479+00.00 LT TO STA. 479+49.00 LT	49.00	3.2	17.4
STA. 479+23.00 RT TO STA. 479+64.00 RT	41.00	3.2	14.6
TOTAL			32.0

HOT-MIX ASPHALT SHOULDERS				
LOCATION STATION TO STATION	LENGTH (FT)	WIDTH (FT)	HMA SHOULDER MIX "C" N50 (TON)	BIT MAT PRIME CT (TON)
(IL 4) (NORTH BOUND)				
NB STA. 478+45.00 LT TO STA. 479+33.73 LT	88.73	6	4.0	0.03
NB STA. 480+87.83 LT TO STA. 481+83.86 LT	96.03	7	6.0	0.03
NB STA. 484+59.23 LT TO STA. 485+30.00 LT	70.77	10	6.0	0.03
NB STA. 478+45.00 RT TO STA. 479+33.73 RT	88.73	11	9.0	0.04
NB STA. 480+87.83 RT TO STA. 481+83.86 RT	96.03	10	9.0	0.04
NB STA. 484+59.23 RT TO STA. 485+30.00 RT	70.77	10	6.0	0.03
(IL 4) (SOUTH BOUND)				
SB STA. 478+55.00 LT TO STA. 479+65.35 LT	110.35	7	12.2	0.04
SB STA. 481+19.45 LT TO STA. 481+49.45 LT	30.00	6	2.2	0.02
SB STA. 484+47.30 LT TO STA. 485+44.00 LT	96.70	9	10.5	0.04
SB STA. 478+55.00 RT TO STA. 479+65.35 RT	110.35	9	14.8	0.04
SB STA. 481+19.45 RT TO STA. 481+49.45 RT	30.00	10	3.8	0.02
SB STA. 484+47.30 RT TO STA. 485+44.00 RT	96.70	9	10.5	0.04
TOTAL			94.0	0.4

INLETS TO BE ADJUSTED	
LOCATION STATION TO STATION	INLETS (EACH)
IL 4 (NORTH BOUND)	
STA. 481+72.00 LT	1
STA. 481+80.00 RT	1
STA. 484+70.00 LT	1
STA. 484+75.00 RT	1
IL 4 (SOUTH BOUND)	
STA. 481+38.00 RT	1
STA. 481+43.00 LT	1
STA. 484+57.00 RT	1
STA. 484+66.00 LT	1
TOTAL	8

COMB. CONCRETE CURB & GUTTER, TYPE B-6.24		
LOCATION STATION TO STATION	LENGTH (FT)	COMB. CURB & GUTTER (FT)
IL 4 (SOUTH BOUND)		
STA. 479+00.00 LT TO STA. 479+49.00 LT	49.00	49.0
STA. 479+23.00 RT TO STA. 479+64.00 RT	41.00	41.0
TOTAL		90.0

GUARDRAIL SCHEDULE	
LOCATION STATION TO STATION	REMOVE & RE-ERECT GUARDRAIL (FT)
IL 4 (NORTH BOUND)	
STA. 480+91.00 RT TO STA. 481+83.00 RT	92
STA. 481+04.00 LT TO STA. 481+65.00 LT	61
STA. 484+73.00 RT TO STA. 485+30.00 RT	57
IL 4 (SOUTH BOUND)	
STA. 478+55.00 LT TO STA. 479+49.00 LT	94
STA. 478+55.00 RT TO STA. 479+64.00 RT	109
STA. 481+23.00 LT TO STA. 481+46.00 LT	23
TOTAL	436

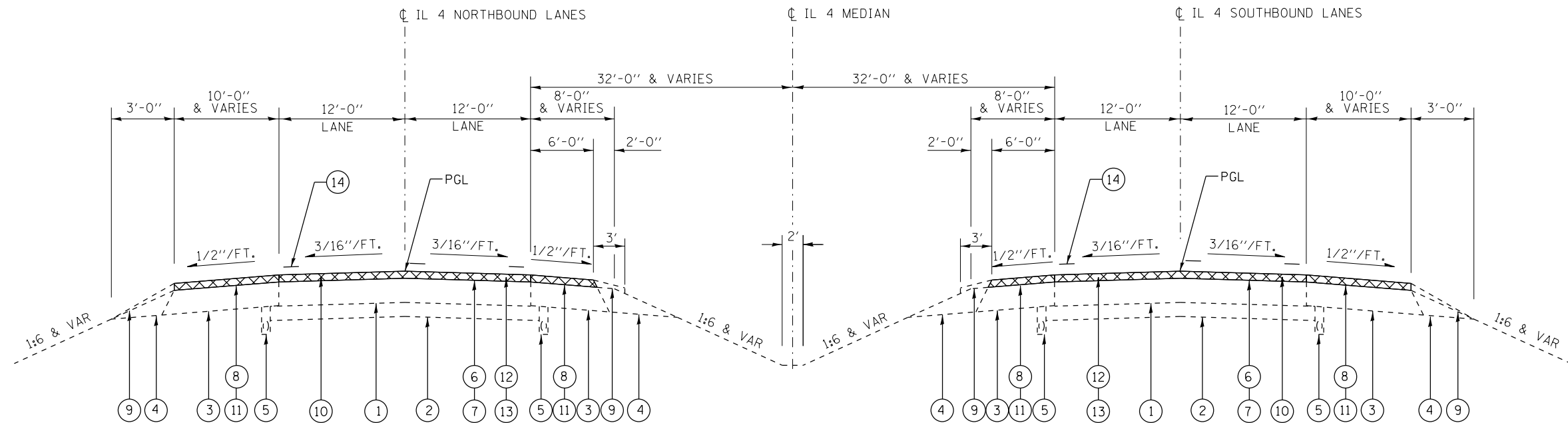
PAVEMENT MARKING SCHEDULE						
LOCATION STATION TO STATION	LENGTH (FT)	PREF. PL PM CENTERLINE 5" SKIP-DASH TYPE B, INLAID WHITE (FT)	URETHANE PAVT. MK. OUTSIDE EDGE LINE 5" WHITE (FT)	URETHANE PAVT. MK. OUTSIDE EDGE LINE 5" YELLOW (FT)	RAISED REFL. PAVT. MKR TWO-WAY CRYSTAL (EACH)	RAISED REFL. PAVT. MKR REMOVAL (EACH)
IL 4 (NORTH BOUND)						
STA. 478+45.00 TO STA. 479+33.73	88.73	23	90	90	2	2
STA. 480+87.83 TO STA. 481+83.86	96.03	25	107	89	4	4
STA. 484+59.23 TO STA. 485+30.00	70.77	19	71	71	2	2
IL 4 (SOUTH BOUND)						
STA. 478+55.00 TO STA. 479+65.35	110.35	29	111	111	4	4
STA. 481+19.45 TO STA. 481+49.45	30	9	23	41	2	2
STA. 484+47.30 TO STA. 485+44.00	96.7	25	97	97	4	4
SUB-TOTAL		130	499	499	18	18
TOTAL		130	998		18	18

SHORT-TERM PAVEMENT MARKING						
LOCATION STATION TO STATION	DESCRIPTION	LENGTH (FT)	SPACING	NUMBER OF APPLICATIONS	SHORT-TERM PAVE MARK (FT)	WORK ZONE PAVE MARK REM (SQ FT)
IL 4 (NORTH BOUND)						
STA. 478+45.00 TO STA. 479+33.73	SKIP-DASH	88.73	4' @ 40'	2	17.7	3
STA. 478+45.00 TO STA. 479+33.73	EDGE LINE	88.73	4' @ 100'	4	14.2	1
STA. 480+87.83 TO STA. 481+83.86	SKIP-DASH	96.03	4' @ 40'	2	19.2	3
STA. 480+87.83 TO STA. 481+83.86	EDGE LINE	96.03	4' @ 100'	4	15.4	1
STA. 484+59.23 TO STA. 485+30.00	SKIP-DASH	70.77	4' @ 40'	2	14.2	2
STA. 484+59.23 TO STA. 485+30.00	EDGE LINE	70.77	4' @ 100'	4	11.3	1
IL 4 (SOUTH BOUND)						
STA. 478+55.00 TO STA. 479+65.35	SKIP-DASH	110.35	4' @ 40'	2	22.0	4
STA. 478+55.00 TO STA. 479+65.35	EDGE LINE	110.35	4' @ 100'	4	17.7	1
STA. 481+19.45 TO STA. 481+49.45	SKIP-DASH	30.00	4' @ 40'	2	6.0	1
STA. 481+19.45 TO STA. 481+49.45	EDGE LINE	30.00	4' @ 100'	4	4.8	1
STA. 484+47.30 TO STA. 485+44.00	SKIP-DASH	96.70	4' @ 40'	2	19.0	3
STA. 484+47.30 TO STA. 485+44.00	EDGE LINE	96.70	4' @ 100'	4	15.5	1
TOTAL					177.0	22

NOTE: SHORT-TERM PAVEMENT MARKING QUANTITIES ARE CALCULATED AS FOLLOWS:
TWO APPLICATIONS OF EDGE LINE (WHITE), TWO APPLICATIONS OF EDGE LINE (YELLOW), AND TWO APPLICATIONS OF SKIP-DASH (WHITE)

CONCRETE CURB REPAIR		
LOCATION STATION TO STATION	LENGTH (FT)	CONCRETE CURB REPAIR (FT)
IL 4 (SOUTH BOUND)		
STA. 484+56.00 RT TO STA. 484+61.00 RT	5	5
TOTAL		5

EXPANSION JOINT					
LOCATION STATION TO STATION	LENGTH (FT)	WIDTH (IN)	AVERAGE DEPTH (IN)	POLYMER CONC (CU FT)	SILICONE JOINT SEALER 3" (FT)
IL 4 (NORTH BOUND)					
STA. 481+34.00	41	3.5	1.5	3	41
TOTAL				3	41



TYPICAL CROSS SECTION
IL 4 (VETERANS PARKWAY)

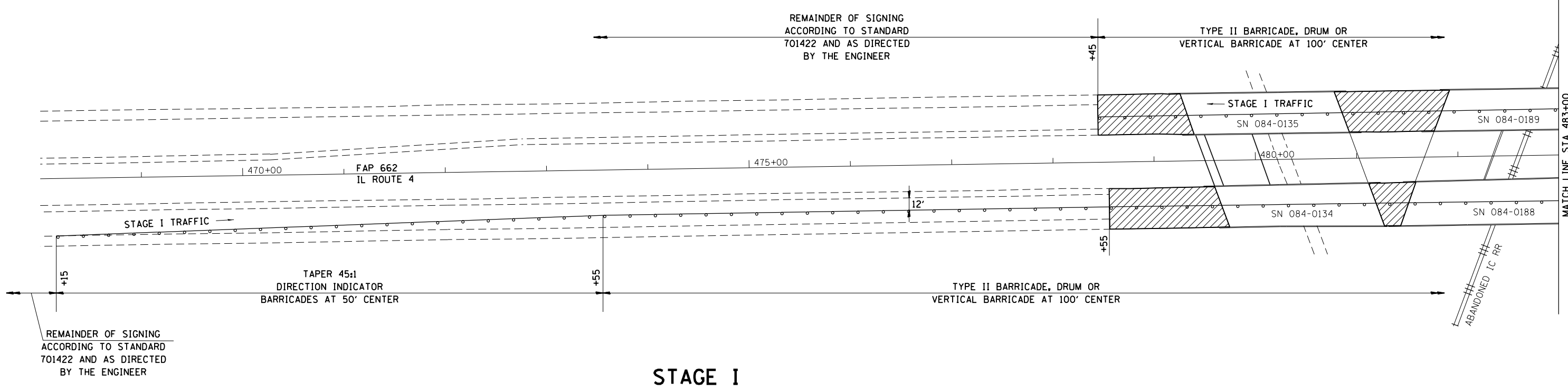
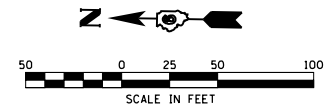
NORTH BOUND IL 4
 STA 478+45.00 TO STA 479+33.73
 STA 480+87.83 TO STA 481+83.86
 STA 484+59.23 TO STA 445+30.00

SOUTH BOUND IL 4
 STA 478+55.00 TO STA 479+65.35
 STA 481+19.45 TO STA 481+49.45
 STA 484+47.30 TO STA 485+44.00

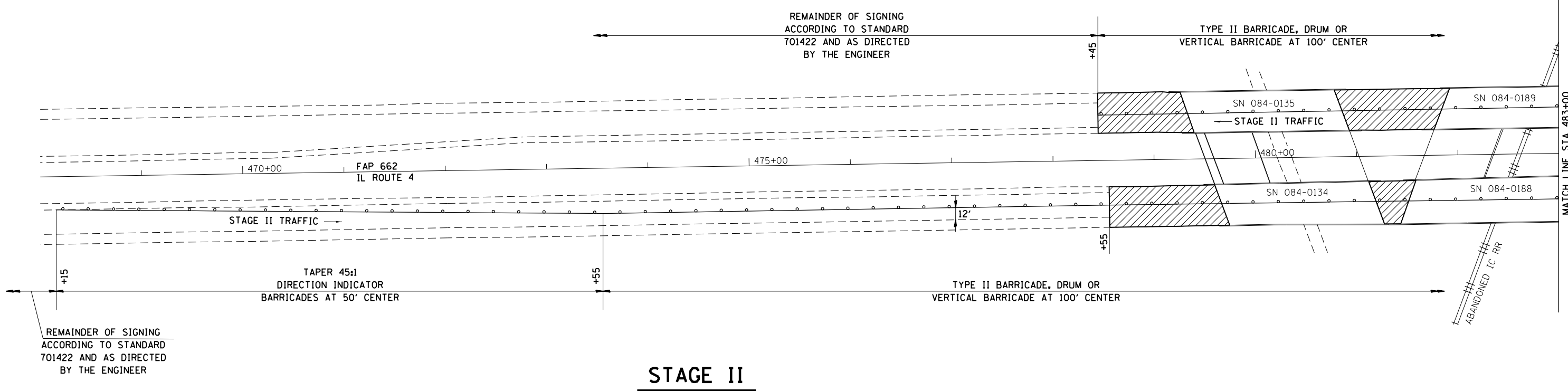
TYPICAL CROSS SECTION LEGEND

- ① EXISTING CRPCC PAVEMENT 8"
- ② EXISTING STABILIZED SUB-BASE 4"
- ③ EXISTING HMA SHOULDERS 8"
- ④ EXISTING AGGREGATE SHOULDERS
- ⑤ EXISTING PIPE UNDERDRAINS 4"
- ⑥ EXISTING POLYMERIZED HOT-MIX ASPHALT SURFACE COURSE, MIX "E", N90 1 1/2"
- ⑦ EXISTING LEVELING BINDER (MACHINE METHOD) N90 1"
- ⑧ EXISTING HOT-MIX ASPHALT SHOULDERS, SPECIAL 2 1/2"
- ⑨ EXISTING AGGREGATE SHOULDERS TYPE B
- ⑩ PROPOSED PCC SURFACE REMOVAL BUTT JOINT
- ⑪ PROPOSED HMA SHOULDERS MIX "C", N50
- ⑫ PROPOSED LEVELING BINDER (MACHINE METHOD) N90
- ⑬ PROPOSED POLYMERIZED HOT-MIX ASPHALT SURFACE COURSE, MIX "E", N90 1 1/2"
- ⑭ PROPOSED PAVEMENT MARKING - 5"

FILE NAME =	USER NAME = sparksgw	DESIGNED -	REVISED -	STATE OF ILLINOIS DEPARTMENT OF TRANSPORTATION	TYPICAL SECTIONS				F.A.P. RTE.	SECTION	COUNTY	TOTAL SHEETS	SHEET NO.
ct:\pw\work\p\dot\sparksgw\10323437\06xxx-sh-t-typic01.dgn		DRAWN -	REVISED -		662	(3) I-13	SANGAMON	13	6				
Default	PLOT SCALE = 40.0000' / in.	CHECKED -	REVISED -		CONTRACT NO. 72F86								
	PLOT DATE = Dec-20-2012 02:41:53PM	DATE -	REVISED -		SCALE:	SHEET OF SHEETS	STA. TO STA.	ILLINOIS FED. AID PROJECT					

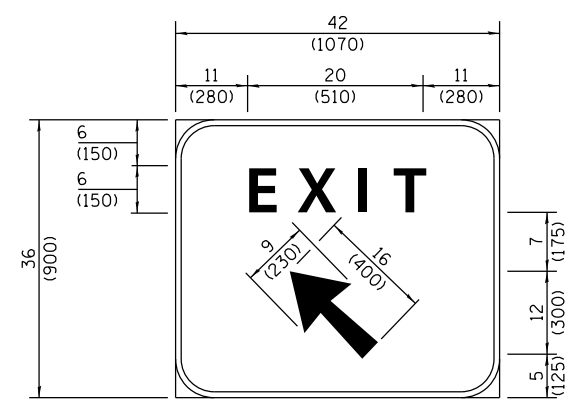
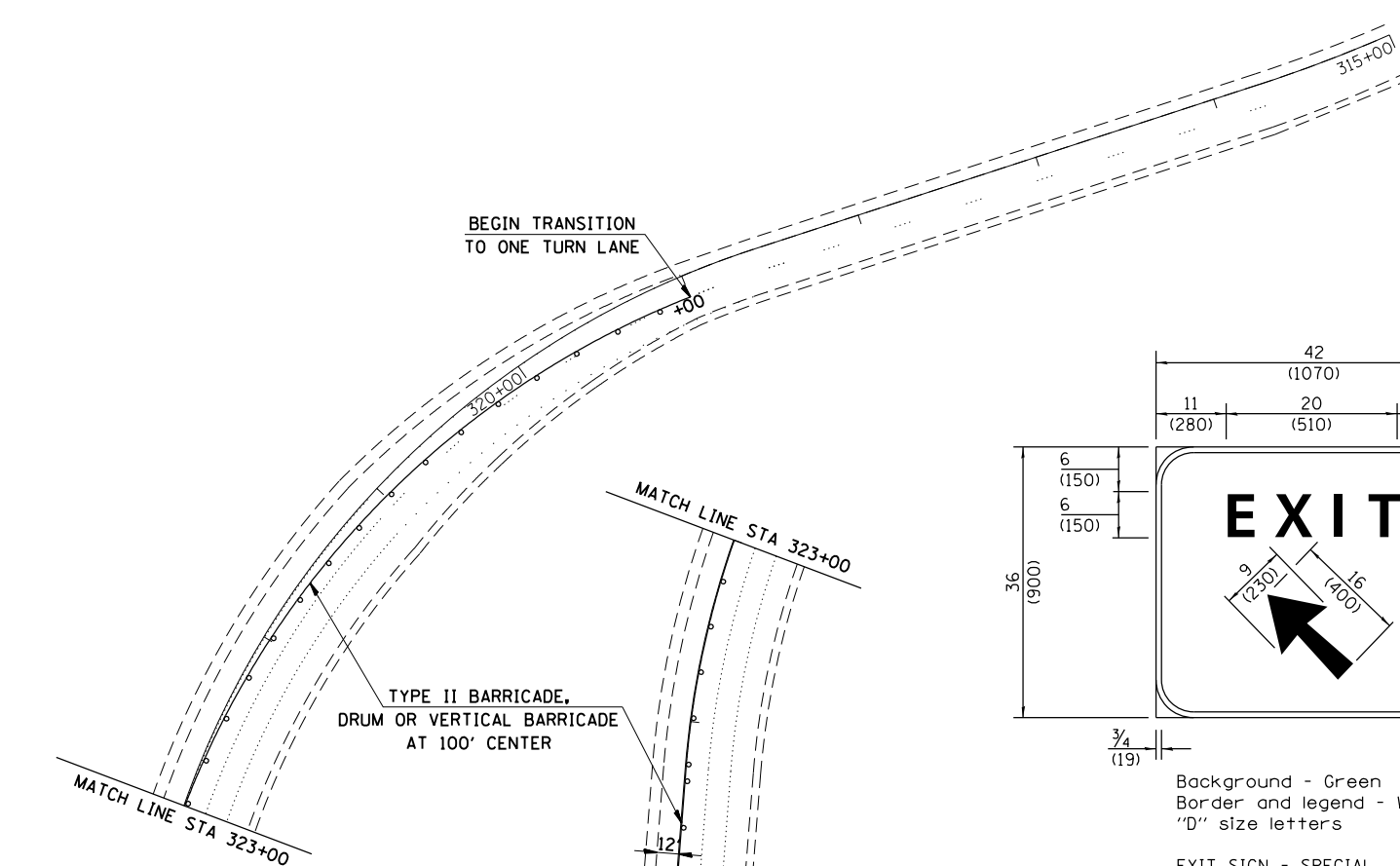
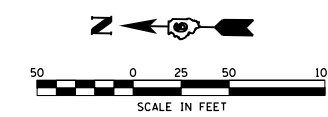


STAGE I



STAGE II

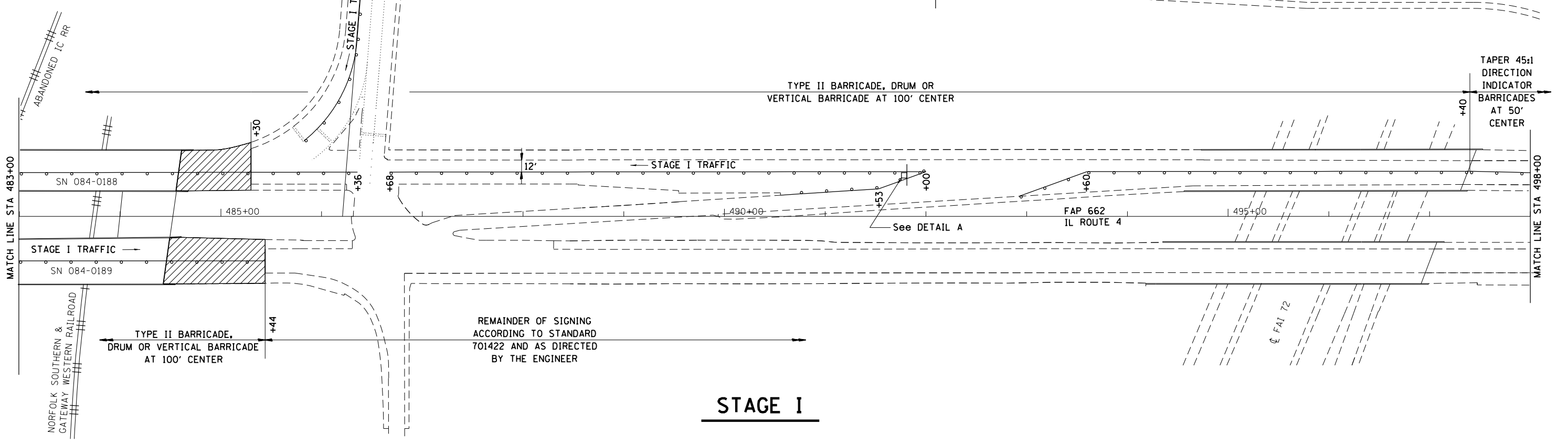
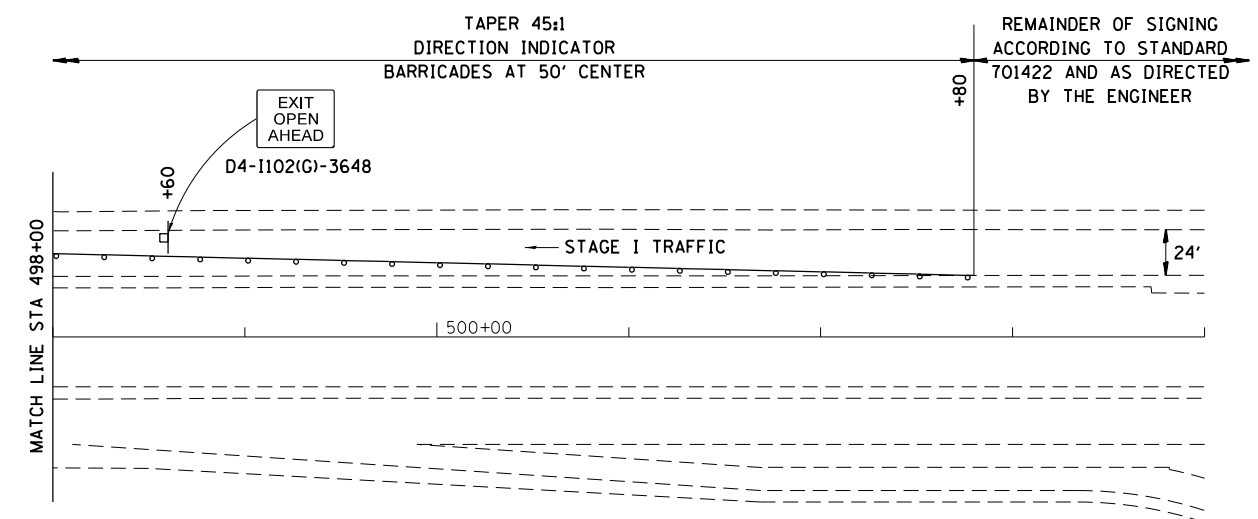
FILE NAME =	USER NAME = sparksgw	DESIGNED -	REVISED -	STATE OF ILLINOIS DEPARTMENT OF TRANSPORTATION	MAINTENANCE OF TRAFFIC				F.A.P. RTE.	SECTION	COUNTY	TOTAL SHEETS	SHEET NO.
Default	ci:\pwork\pwork\pwork\sparksgw\10323437\06xxx-sh1-details.dgn	DRAWN -	REVISED -						662	(31-13)	SANGAMON	13	7
	PLOT SCALE = 100.0000' / 1in.	CHECKED -	REVISED -		CONTRACT NO. 72F86				ILLINOIS FED. AID PROJECT				
	PLOT DATE = Dec-20-2012 02:41:54PM	DATE -	REVISED -		SCALE:	SHEET	OF	SHEETS	STA.	TO	STA.		



Background - Green
 Border and legend - White
 "D" size letters

EXIT SIGN - SPECIAL

DETAIL A
 (To be utilized where distance between the two rows of channelizing devices is 6' (1.8 m) in width.)



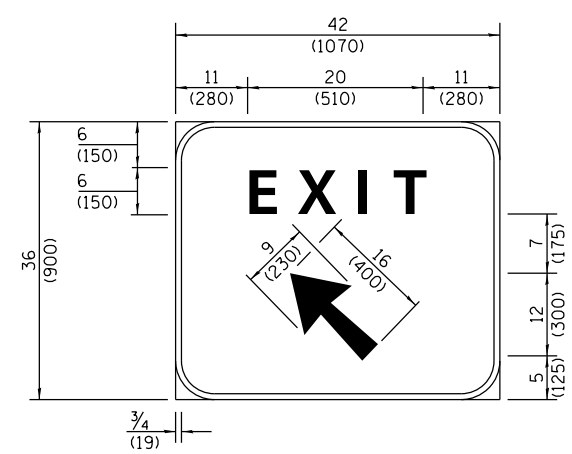
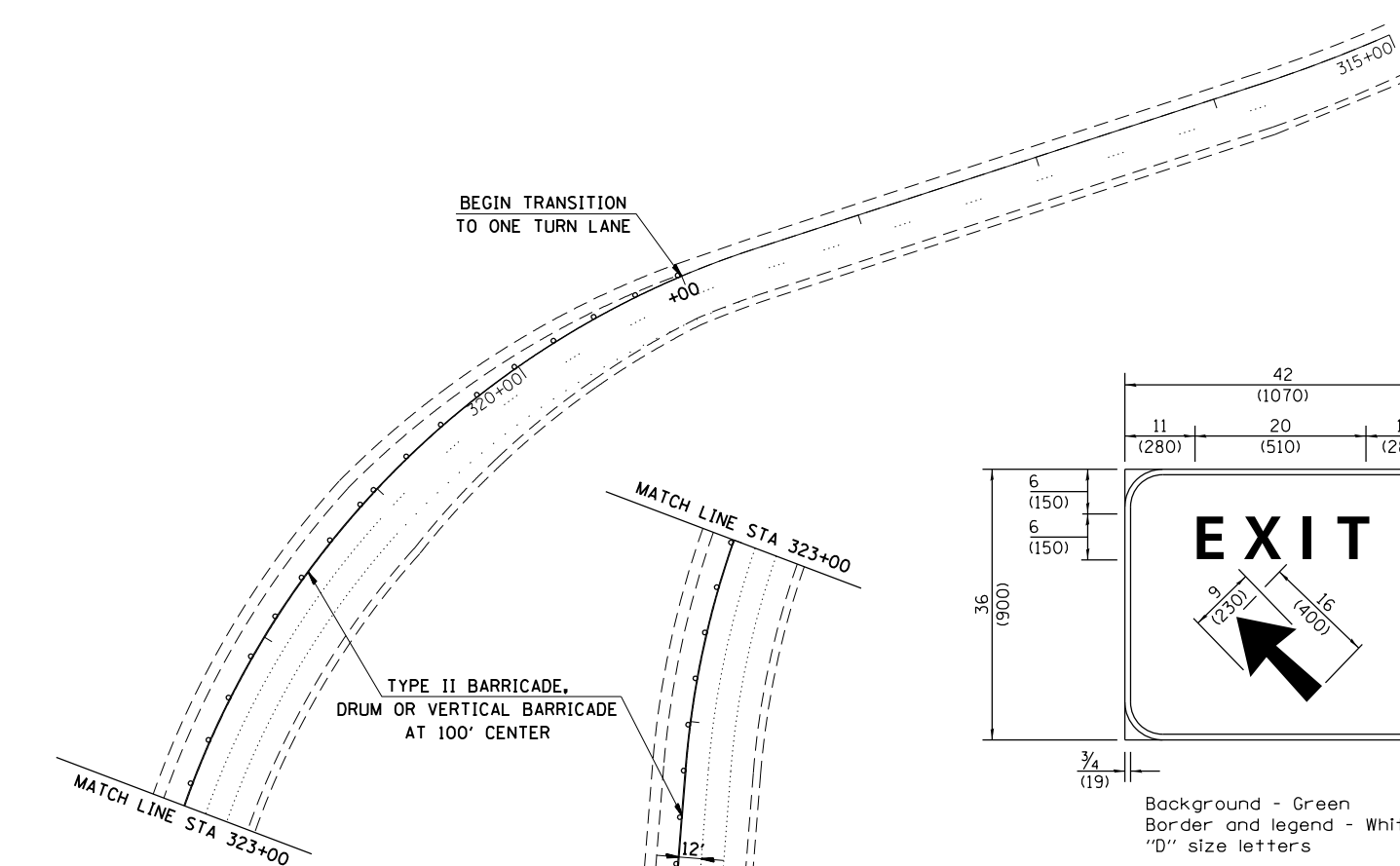
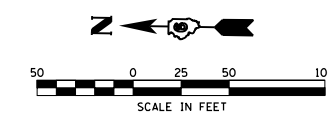
STAGE I

FILE NAME =	USER NAME = sparksgw	DESIGNED -	REVISED -
c:\pwwork\pwwork\sparksgw\10323437\06xxx-sh1-details.dgn		DRAWN -	REVISED -
Default	PLOT SCALE = 100.0000' / 1in.	CHECKED -	REVISED -
	PLOT DATE = Dec-20-2012 02:41:54PM	DATE -	REVISED -

STATE OF ILLINOIS
 DEPARTMENT OF TRANSPORTATION

MAINTENANCE OF TRAFFIC			
SCALE:	SHEET	OF SHEETS	STA. TO STA.

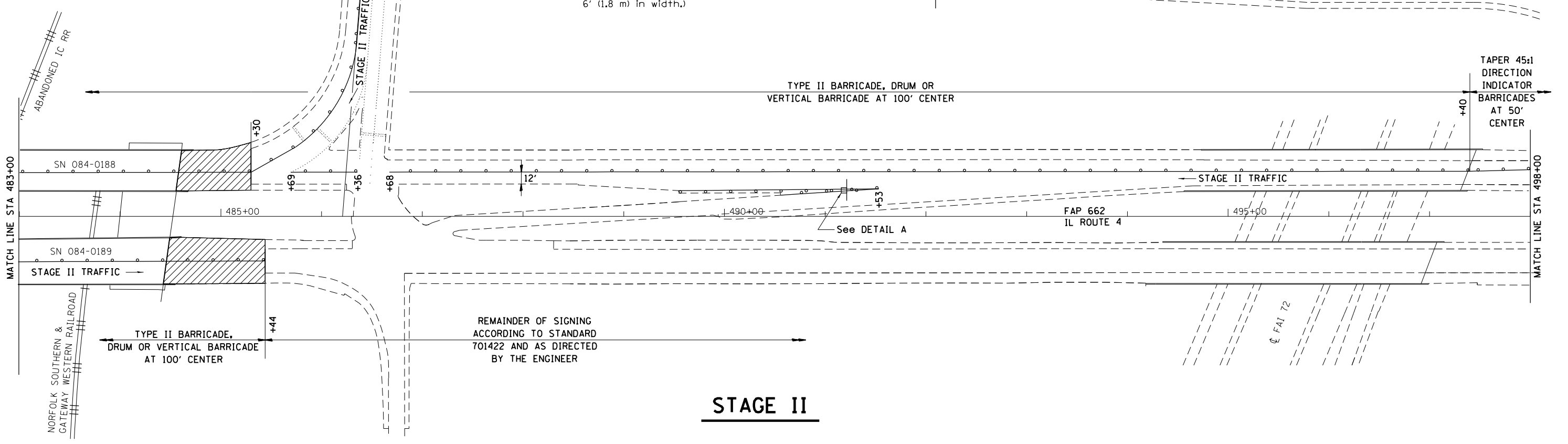
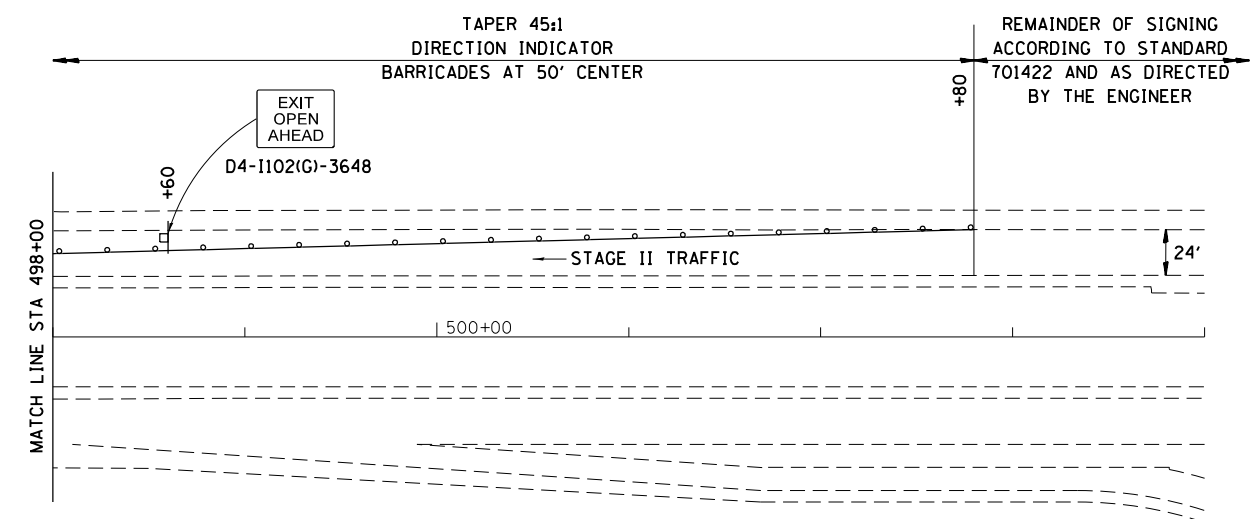
F.A.P. RTE.	SECTION	COUNTY	TOTAL SHEETS	SHEET NO.
662	(3)1-13	SANGAMON	13	8
CONTRACT NO. 72F86				
ILLINOIS FED. AID PROJECT				



Background - Green
 Border and legend - White
 "D" size letters

EXIT SIGN - SPECIAL

DETAIL A
 (To be utilized where distance between the two rows of channelizing devices is 6' (1.8 m) in width.)



STAGE II

FILE NAME =	USER NAME = sparksgw	DESIGNED -	REVISED -
ci:\pw\work\p\dot\sparksgw\10323437\06xxx-sh1-details.dgn		DRAWN -	REVISED -
Default	PLOT SCALE = 100.0000' / 1in.	CHECKED -	REVISED -
	PLOT DATE = Dec-20-2012 02:41:54PM	DATE -	REVISED -

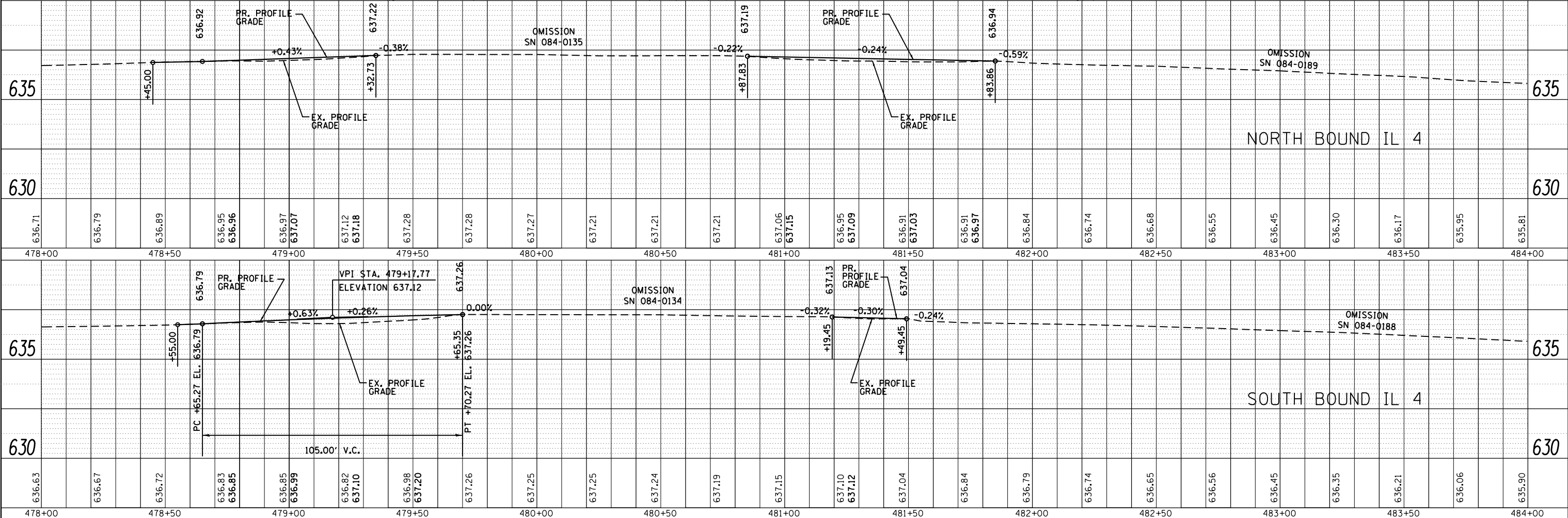
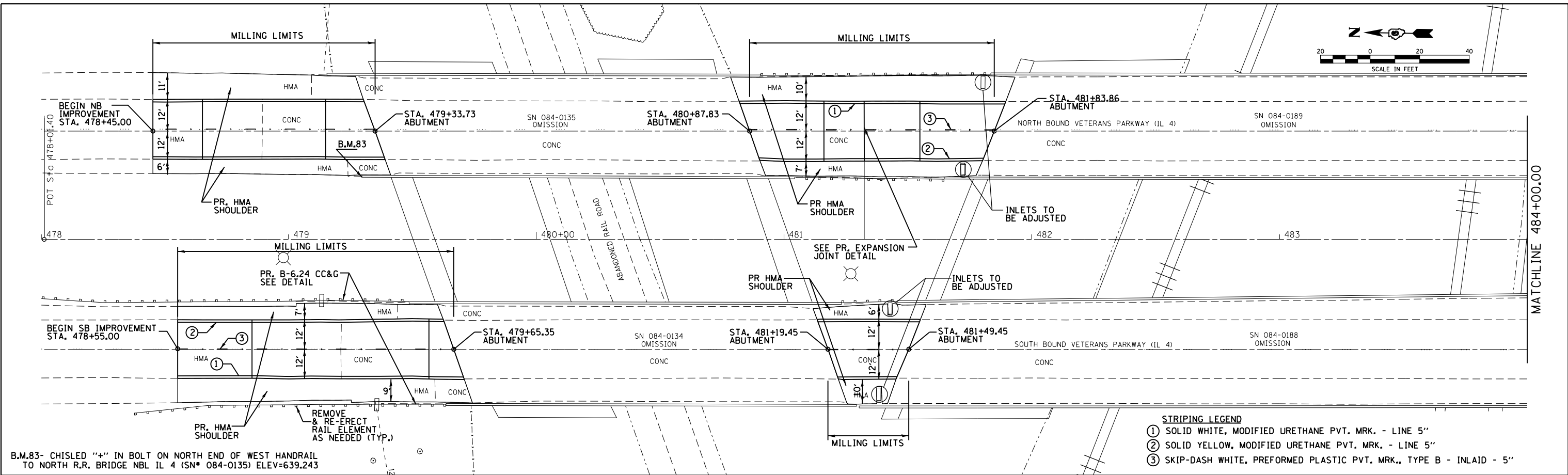
STATE OF ILLINOIS
 DEPARTMENT OF TRANSPORTATION

MAINTENANCE OF TRAFFIC			
SCALE:	SHEET	OF SHEETS	STA. TO STA.

F.A.P. RTE.	SECTION	COUNTY	TOTAL SHEETS	SHEET NO.
662	(3)I-13	SANGAMON	13	9
CONTRACT NO. 72F86				
ILLINOIS FED. AID PROJECT				

PLAN	SURVEYED	DATE
	PLOTTED	
	GRADES CHECKED	
	STRUCTURE NOTATIONS CHECKED	
	NOTE BOOK NO.	
	FILE NAME	

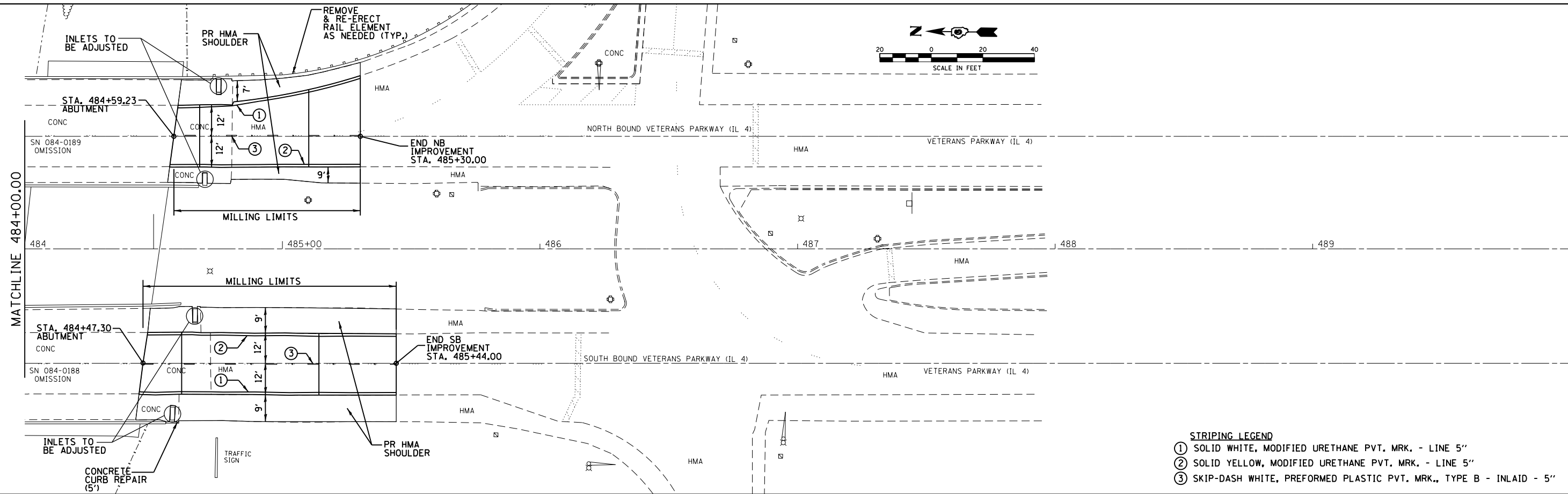
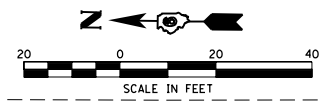
PROFILE	SURVEYED	DATE
	PLOTTED	
	GRADES CHECKED	
	STRUCTURE NOTATIONS CHECKED	
	NOTE BOOK NO.	
	FILE NAME	



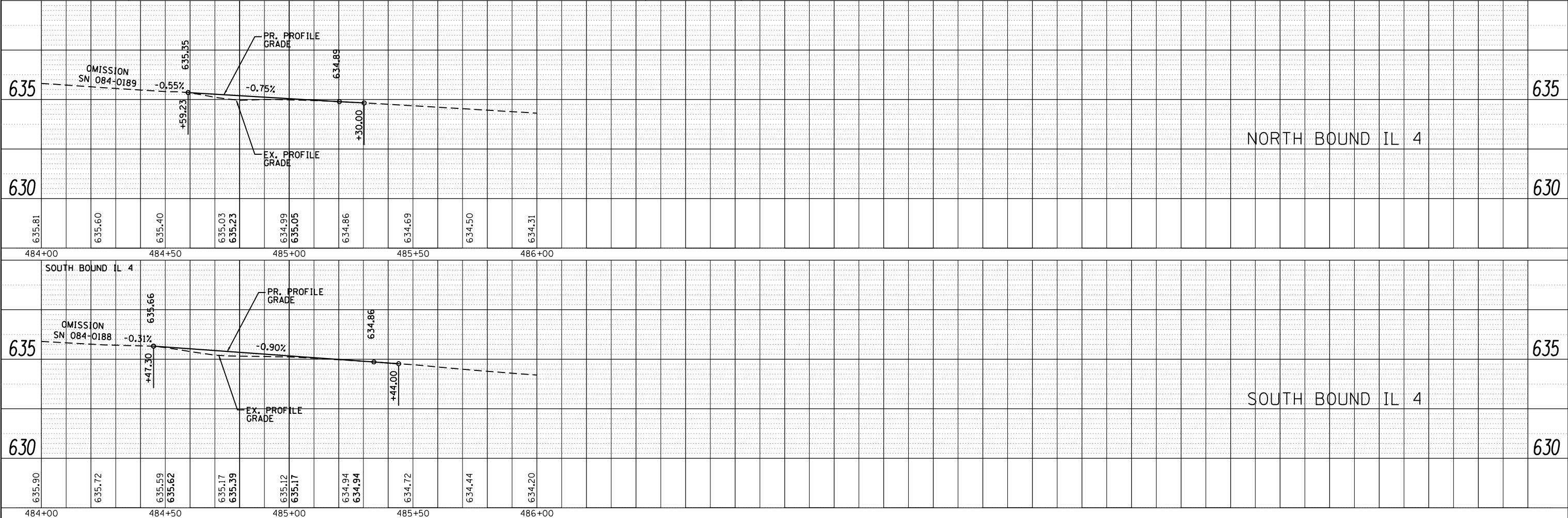
FILE NAME =	USER NAME = sparksgw	DESIGNED -	REVISOR -	STATE OF ILLINOIS DEPARTMENT OF TRANSPORTATION	PLAN & PROFILE SHEET	F.A.P. RTE.	SECTION	COUNTY	TOTAL SHEETS	SHEET NO.	
Default		CHECKED -	REVISOR -			662	(3) I-13	SANGAMON	13	10	
		DRAWN -	REVISOR -			CONTRACT NO. 72F86					
		CHECKED -	REVISOR -			ILLINOIS FED. AID PROJECT					

PLAN	SURVEYED	DATE
	PLOTTED	
	ALIGNED	
	CHECKED	
	FILED	
	NO.	

PROFILE	SURVEYED	DATE
	PLOTTED	
	GRADES CHECKED	
	STRUCTURE	
	NOTATIS	
	CPWD	
	NO.	



- STRIPING LEGEND**
- ① SOLID WHITE, MODIFIED URETHANE PVT. MRK. - LINE 5"
 - ② SOLID YELLOW, MODIFIED URETHANE PVT. MRK. - LINE 5"
 - ③ SKIP-DASH WHITE, PREFORMED PLASTIC PVT. MRK., TYPE B - INLAID - 5"



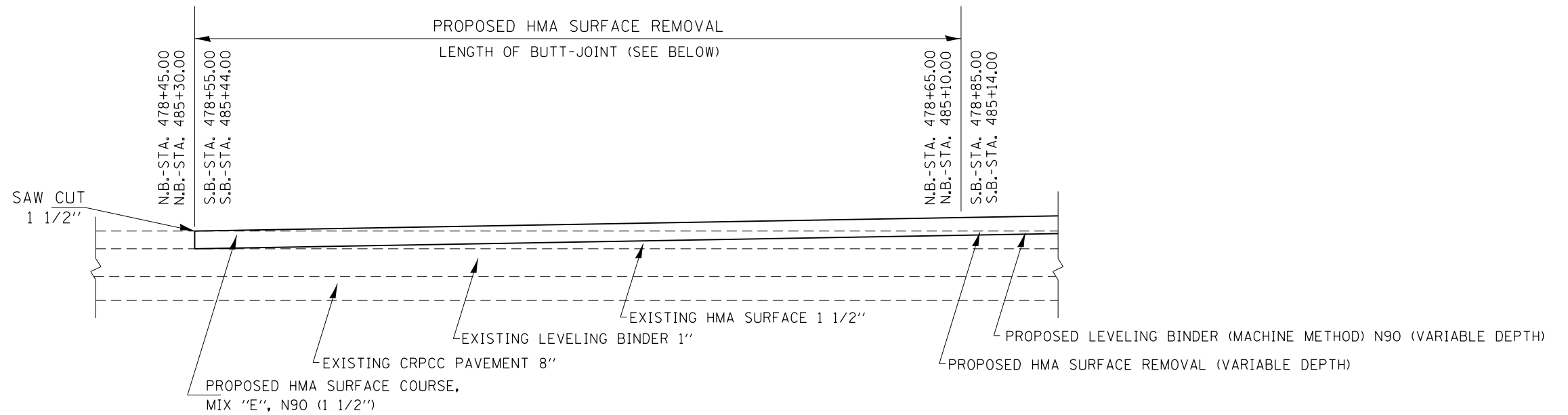
FILE NAME =	USER NAME = sparksgw	DESIGNED -	REVISED -
c:\pwork\pwork\sparksgw\d0323437\0672F86-sh1-pln-pr.fldgn		CHECKED -	REVISED -
Default	PLOT SCALE = 40.0000' / in.	DRAWN -	REVISED -
	PLOT DATE = Dec-20-2012 02:41:57PM	CHECKED -	REVISED -

**STATE OF ILLINOIS
DEPARTMENT OF TRANSPORTATION**

PLAN & PROFILE SHEET

SCALE: SHEET OF SHEETS STA. TO STA.

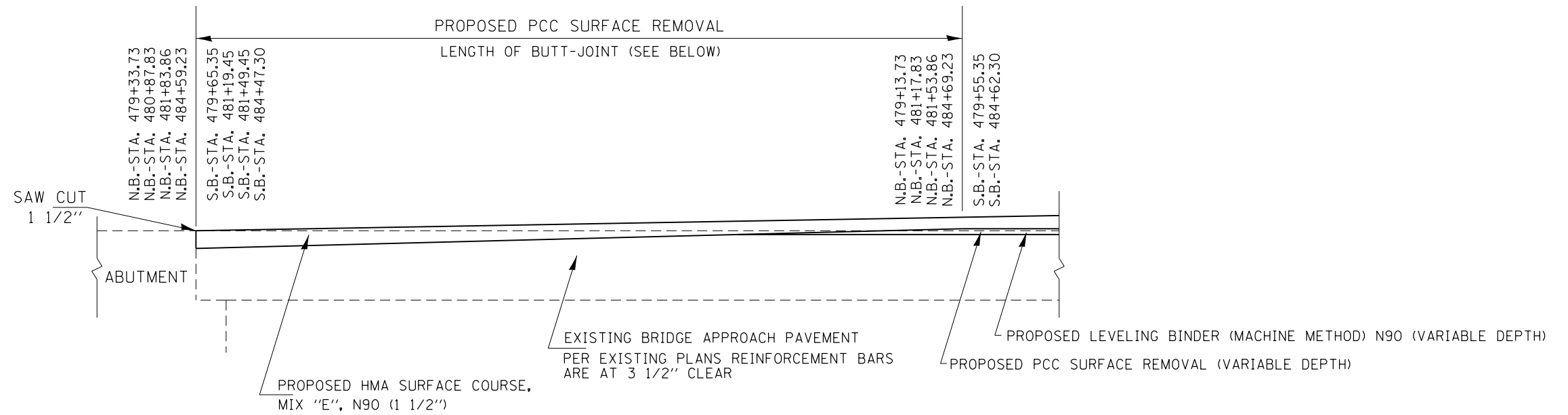
F.A.P. RTE.	SECTION	COUNTY	TOTAL SHEETS	SHEET NO.
662	(3) I-13	SANGAMON	13	11
CONTRACT NO. 72F86				
ILLINOIS FED. AID PROJECT				



HOT-MIX ASPHALT SURFACE REMOVAL BUTT-JOINT DETAIL *

SN 084-0135 N.B. - STA. 478+45.00 TO STA. 478+65.00 (20.00')
 SN 084-0189 N.B. - STA. 485+10.00 TO STA. 485+30.00 (20.00')
 SN 084-0134 S.B. - STA. 478+55.00 TO STA. 478+85.00 (30.00')
 SN 084-0188 S.B. - STA. 485+14.00 TO STA. 485+44.00 (30.00')

* NOTE: PAID FOR AS PORTLAND CEMENT CONCRETE SURFACE REMOVAL - BUTT JOINT

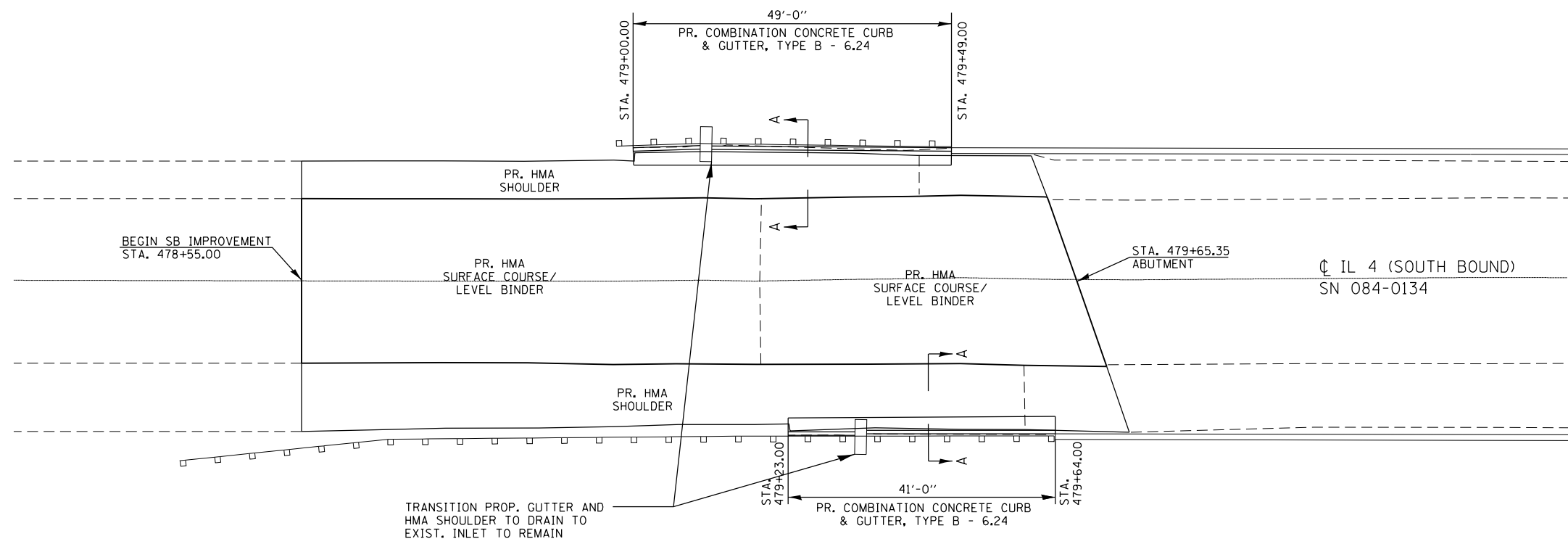


PORTLAND CEMENT CONCRETE SURFACE REMOVAL BUTT-JOINT DETAIL

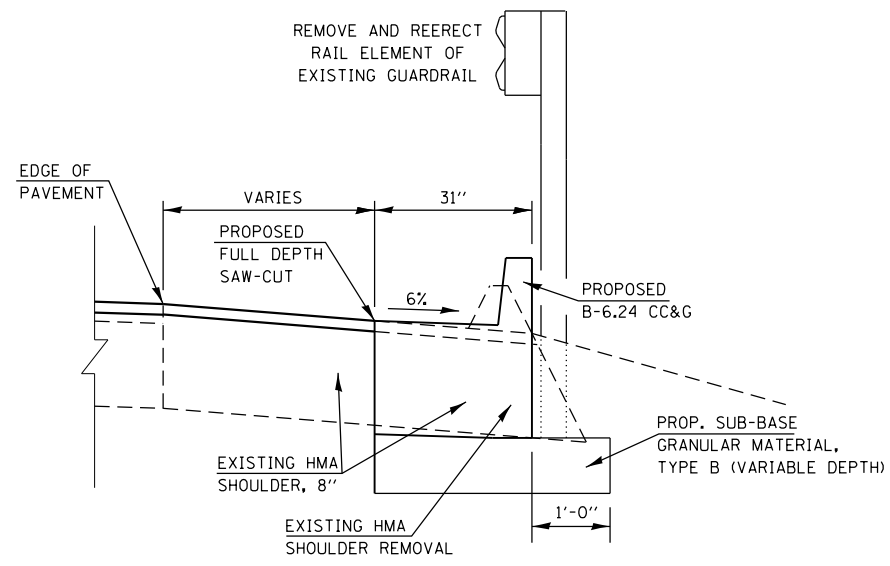
SN 084-0135 N.B. - STA. 479+13.73 TO STA. 479+33.73 (20.00')
 SN 084-0135 N.B. - STA. 480+87.83 TO STA. 481+17.83 (30.00')
 SN 084-0189 N.B. - STA. 481+53.86 TO STA. 481+83.86 (30.00')
 SN 084-0189 N.B. - STA. 484+59.23 TO STA. 484+69.23 (10.00')
 SN 084-0134 S.B. - STA. 479+55.35 TO STA. 479+65.35 (10.00')
 SN 084-0134 / SN 084-0188 S.B. - STA. 481+19.45 TO STA. 481+49.45 (30.00')
 SN 084-0188 S.B. - STA. 484+47.30 TO STA. 484+62.30 (15.00')

NOTE: PCC SURFACE REMOVAL BUTT-JOINT,
 HMA SURFACE REMOVAL BUTT-JOINT,
 PCC SURFACE REMOVAL VARIABLE DEPTH,
 HMA SURFACE REMOVAL VARIABLE DEPTH,
 SHALL BE PAID FOR AS PORTLAND CEMENT
 CONCRETE SURFACE REMOVAL BUTT-JOINT.

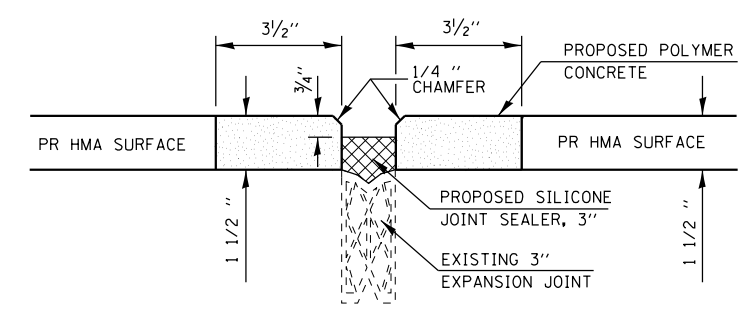
FILE NAME =	USER NAME = sparksgw	DESIGNED -	REVISED -	STATE OF ILLINOIS DEPARTMENT OF TRANSPORTATION	BUTT-JOINT DETAILS				F.A.P. RTE.	SECTION	COUNTY	TOTAL SHEETS	SHEET NO.
ci:\pw\work\p\idot\sparksgw\0323437\06xxx-sh\details.dgn		DRAWN -	REVISED -		662	(3) I-13	SANGAMON	13	12				
Default	PLOT SCALE = 40.0000' / in.	CHECKED -	REVISED -		CONTRACT NO. 72F86				ILLINOIS FED. AID PROJECT				
	PLOT DATE = Dec-20-2012 02:41:58PM	DATE -	REVISED -		SCALE:	SHEET	OF	SHEETS	STA.	TO	STA.		



**B-6.24 CONCRETE CURB & GUTTER DETAIL
PLAN**



SECTION A-A



**TYPICAL PROPOSED EXPANSION JOINT
DETAIL**

STA. 481+34.00

FILE NAME =	USER NAME = sparksgw	DESIGNED -	REVISED -	STATE OF ILLINOIS DEPARTMENT OF TRANSPORTATION	DETAILS			F.A.P. RTE.	SECTION	COUNTY	TOTAL SHEETS	SHEET NO.	
Default	Plot Scale = 40.0000' / in.	CHECKED -	REVISED -					662	(3) I-13	SANGAMON	13	13	
	PLOT DATE = Dec-20-2012 02:41:58PM	DATE -	REVISED -		SCALE:	SHEET	OF	SHEETS	STA.	TO	STA.	CONTRACT NO. 72F86	
												ILLINOIS FED. AID PROJECT	