

F.A.P. RTE.	SECTION	COUNTY	TOTAL SHEETS	SHEET NO.
658	D6 RUMBLE STRIP 2013	ILLINOIS	39	1
ILLINOIS CONTRACT NO. 72F93				

STATE OF ILLINOIS
DEPARTMENT OF TRANSPORTATION
DIVISION OF HIGHWAYS
**PROPOSED
HIGHWAY PLANS**

FAP ROUTE 658 (IL 29)
SECTION D6 RUMBLE STRIP 2013

CENTERLINE RUMBLE STRIP
MASON, MENARD COUNTIES

INDEX OF SHEETS

- 1 COVERSHEET
- 2 GENERAL NOTES
- 3 SUMMARY OF QUANTITIES
- 4-5 SCHEDULES
- 6-37 ALIGNMENT DIAGRAMS
- 38-39 DETAILS

STANDARDS

SEE SHEET 2

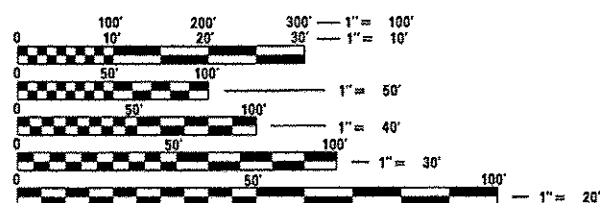
AVERAGE DAILY TRAFFIC (2011)

SOUTH LIMITS TO HARGRAVE ST
ADT=8,200 P.V.=88.7% S.U.=7.9% M.U.=3.4%

HARGRAVE ST TO IL 123 WEST
ADT=4,000 P.V.=81.0% S.U.=13.6% M.U.=5.4%

IL 123 WEST TO GREENVIEW
ADT=2,650 P.V.=73.6% S.U.=22.6% M.U.=3.8%

GREENVIEW TO NORTH LIMITS
ADT=2,000 P.V.=81.4% S.U.=12.5% M.U.=6.1%



FULL SIZE PLANS HAVE BEEN PREPARED USING STANDARD ENGINEERING SCALES. REDUCED SIZED PLANS WILL NOT CONFORM TO STANDARD SCALES. IN MAKING MEASUREMENTS ON REDUCED PLANS, THE ABOVE SCALES MAY BE USED.

J.U.L.I.E.
JOINT UTILITY LOCATION INFORMATION FOR EXCAVATION
1-800-892-0123
OR 811

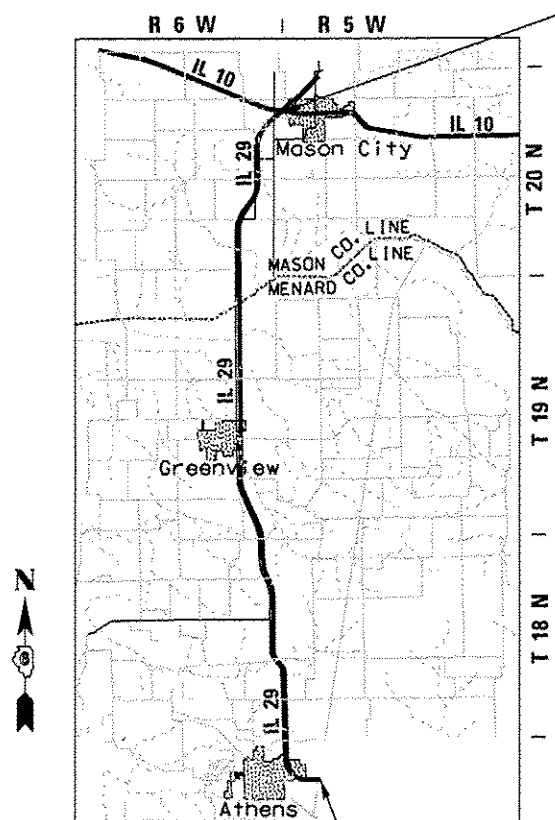
SR. TEAM ENGINEER: VINCE MADONIA (217) 785-9046

TEAM ENGINEER: JAY EDWARDS (217) 785-5321

CONTRACT NO. 72F93

C-96-026-13

PROJECT ENDS
STA 270+65.38



PROJECT BEGINS
STA 84+70.00

LOCATION MAP

MENARD CO LENGTH = 66685.5 FT. = 12.63 MILE
MASON CO LENGTH = 27097.0 FT. = 5.13 MILE
TOTAL LENGTH = 93782.5 FT. = 17.76 MILE

D-96-026-13



STATION EQUATIONS:

STA. 455 + 62.05BK = STA. 455 + 82.01AH
STA. 270 + 19.93BK = STA. 270 + 60.46AH
STA. 138 + 81.73BK = STA. 139 + 88.70AH
STA. 732 + 50.94BK = STA. 732 + 49.96AH
STA. 784 + 49.53BK = STA. 33 + 22.93AH
STA. 169 + 56.79BK = STA. 170 + 11.30AH
STA. 263 + 11.04BK = STA. 263 + 14.43AH

STATE OF ILLINOIS
DEPARTMENT OF TRANSPORTATION
DIVISION OF HIGHWAYS

SUBMITTED December 19, 2012
John D. Baranzelli
DEPUTY DIRECTOR OF HIGHWAYS, REGION ENGINEER
Feb 1, 2013
John D. Baranzelli P.E./BL
ENGINEER OF DESIGN AND ENVIRONMENT
Feb 1, 2013
Omer Osman P.E./BL
DIRECTOR OF HIGHWAYS, CHIEF ENGINEER

PRINTED BY THE AUTHORITY
OF THE STATE OF ILLINOIS