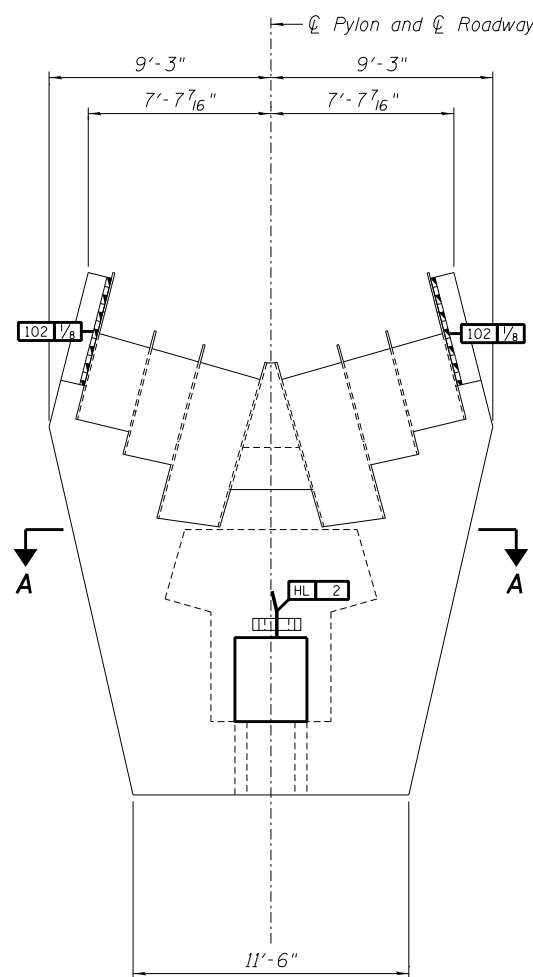
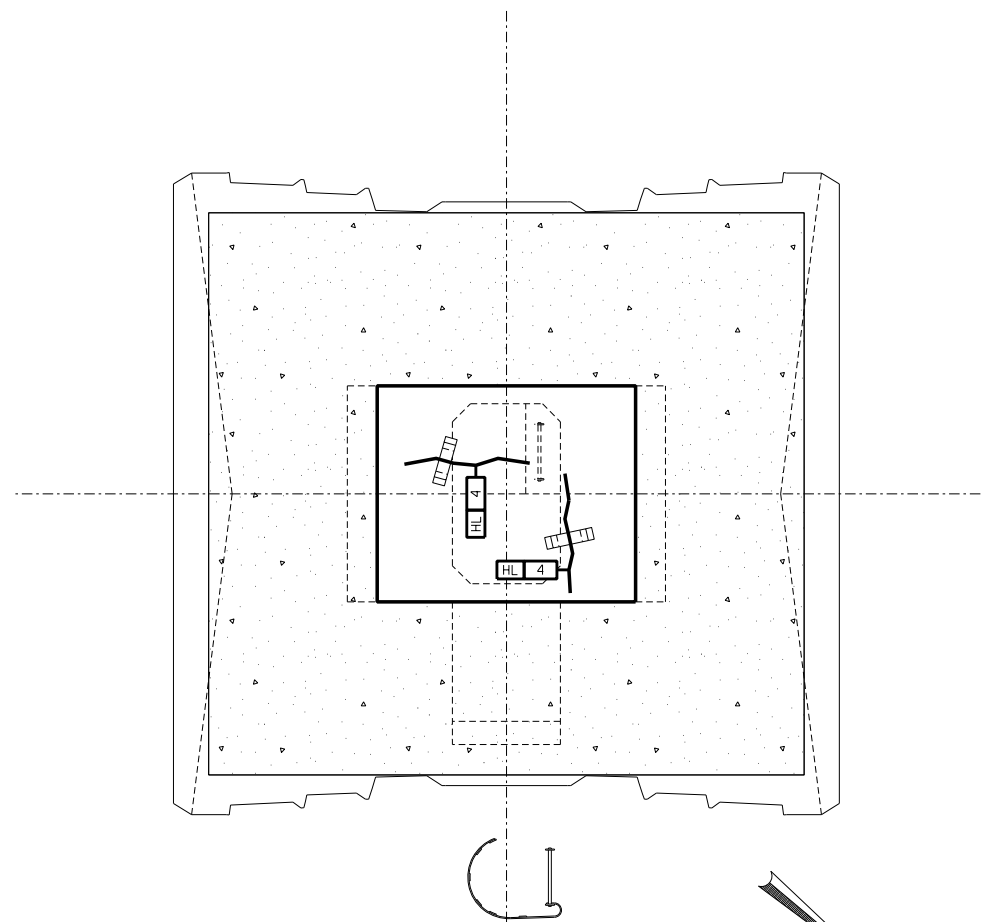
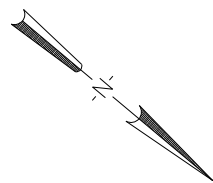


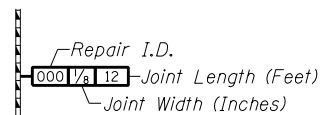
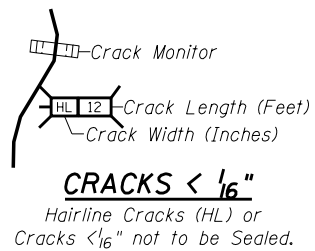
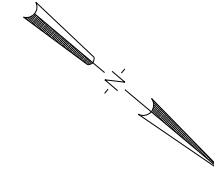
PLAN - STAY SADDLES



ELEVATION - NORTH FACE

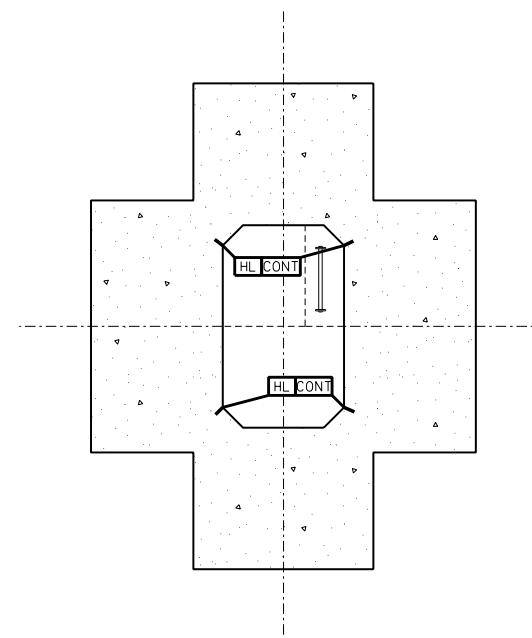


**SECTION A-A
ACCESS SPACE CEILING**

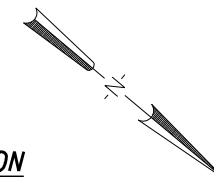


POLYURETHANE SEALANT

Note:
 Sealant shall be Non-staining gray one component non-sag elastomeric gun grade polyurethane sealant meeting the requirements of ASTM C-920, Type S, Grade NS, Class 25.



TYPICAL ACCESS OPENING SECTION
 (Taken at Elev. 613.00)



REPAIRS LIST - PIER 9 - PYLON HEAD

I.D.	Description	Pay Item	Units	Quantity
102	Failed Sealant Btwn. Saddle Stl. & Conc.	Polyurethane Sealant	FOOT	40.8
-	-	-	-	-
-	-	-	-	-
-	-	-	-	-
-	-	-	-	-

DESIGNED -	EXAMINED _____	DATE - _____
CHECKED -	ENGINEER OF STRUCTURAL SERVICES	
DRAWN Rod	PASSED _____	
CHECKED MNM	ENGINEER OF BRIDGES AND STRUCTURES	

**STATE OF ILLINOIS
DEPARTMENT OF TRANSPORTATION**

**REPAIRS TO - MISSOURI PYLON (PIER 9) - HEAD & ACCESS SPACES
STRUCTURE NO. 060-0255**

SHEET NO. 33 OF 48 SHEETS

F.A.P. RTE.	SECTION	COUNTY	TOTAL SHEETS	SHEET NO.
304	100B-1DS-1	MADISON	58	43
CONTRACT NO. 76E73				