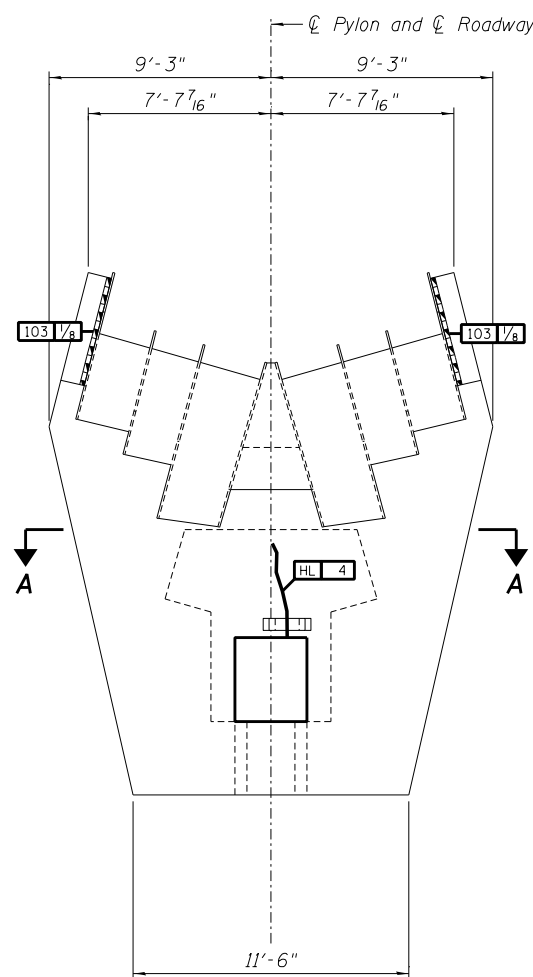
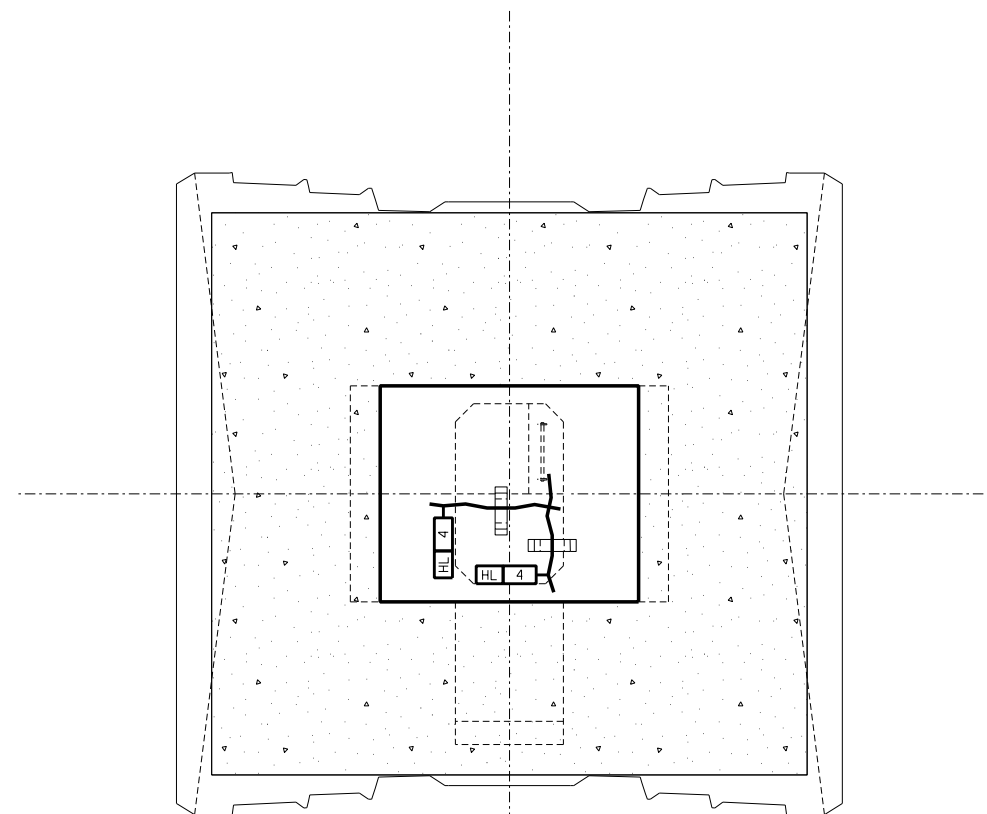
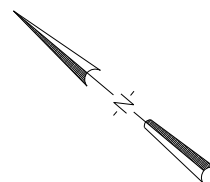


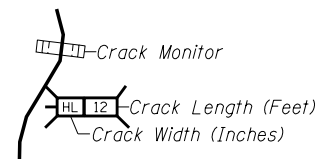
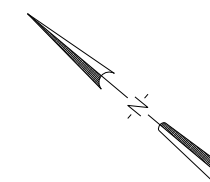
**PLAN - STAY SADDLES**



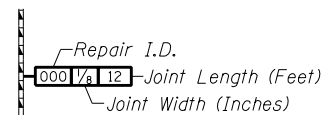
**ELEVATION - SOUTH FACE**



**SECTION A-A  
ACCESS SPACE CEILING**

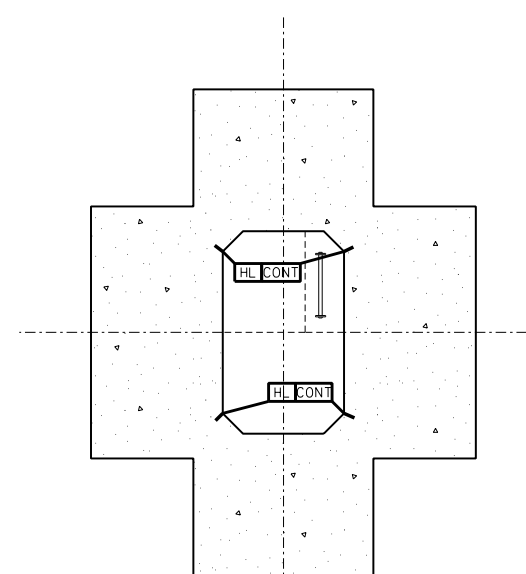


**CRACKS < 1/16"**  
 Hairline Cracks (HL) or  
 Cracks < 1/16" not to be Sealed.

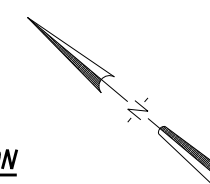


**POLYURETHANE SEALANT**

Note:  
 Sealant shall be Non-staining gray one component non-sag elastomeric gun grade polyurethane sealant meeting the requirements of ASTM C-920, Type S, Grade NS, Class 25.



**TYPICAL ACCESS OPENING SECTION**  
 (Taken at Elev. 613.00)



**REPAIRS LIST - PIER 10 - PYLON HEAD**

I.D.	Description	Pay Item	Units	Quantity
103	Failed Sealant Btwn. Saddle Stl. & Conc.	Polyurethane Sealant	FOOT	40.8
-	-	-	-	-
-	-	-	-	-
-	-	-	-	-
-	-	-	-	-

DESIGNED -	EXAMINED _____	DATE - _____
CHECKED -	ENGINEER OF STRUCTURAL SERVICES	
DRAWN Rod	PASSED _____	
CHECKED MNM	ENGINEER OF BRIDGES AND STRUCTURES	

**STATE OF ILLINOIS  
DEPARTMENT OF TRANSPORTATION**

**REPAIRS TO - ILLINOIS PYLON (PIER 10) - HEAD & ACCESS SPACES  
STRUCTURE NO. 060-0255**

SHEET NO. 35 OF 48 SHEETS

F.A.P. RTE.	SECTION	COUNTY	TOTAL SHEETS	SHEET NO.
304	100B-IDS-1	MADISON	58	45
<b>CONTRACT NO. 76E73</b>				