

F.A.I. RTE.	SECTION	COUNTY	TOTAL SHEETS	SHEET NO.
55/70	60-(7,8,9,10)J-1	MADISON	14	1
		ILLINOIS	CONTRACT NO. 76F96	

STATE OF ILLINOIS
DEPARTMENT OF TRANSPORTATION
DIVISION OF HIGHWAYS

**PROPOSED
HIGHWAY PLANS**

FAI ROUTE 55/70 (I-55/70)
SECTION 60-(7,8,9,10)J-1
INSTALLATION OF STEEL PLATE BEAM
GUARDRAIL AND ATTENUATORS
MADISON COUNTY
PROJECT HSIP-000S(916)
C-98-088-12

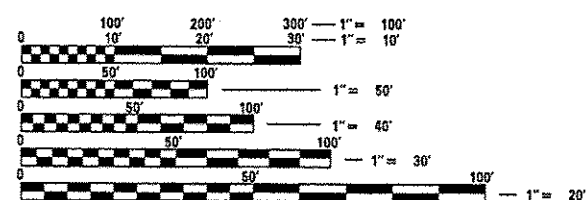
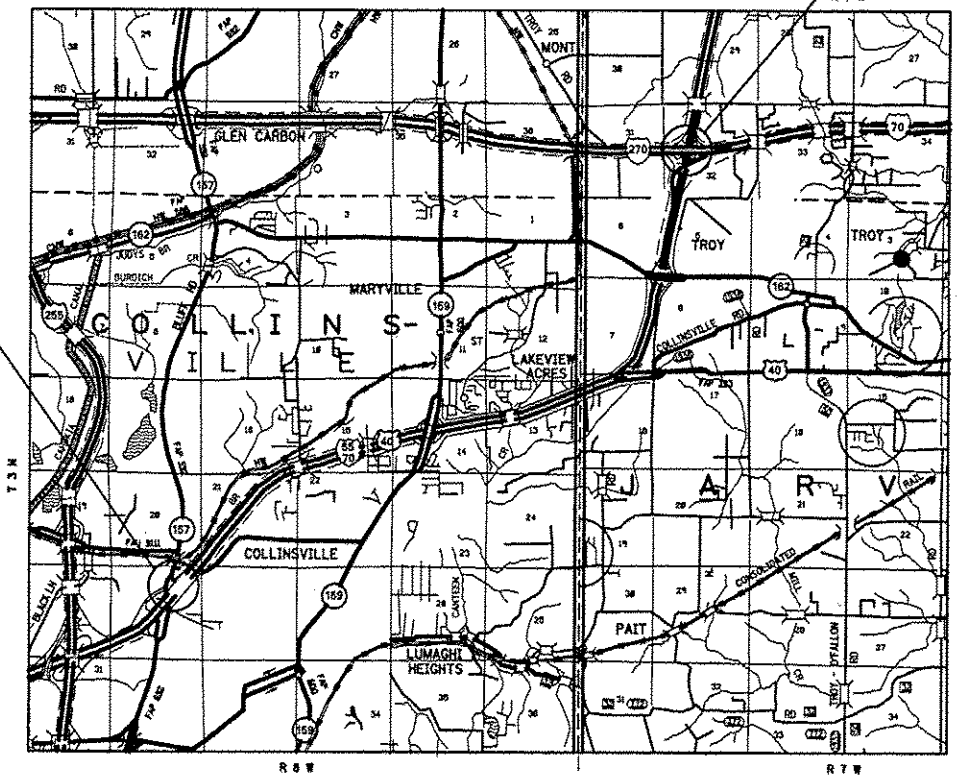
FOR INDEX OF SHEETS, SEE SHEET NO. 2

D-98-079-12



PROJECT BEGINS
AT IL 157

PROJECT ENDS
AT I-270

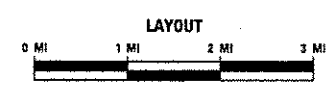


FULL SIZE PLANS HAVE BEEN PREPARED USING STANDARD ENGINEERING SCALES. REDUCED SIZED PLANS WILL NOT CONFORM TO STANDARD SCALES. IN MAKING MEASUREMENTS ON REDUCED PLANS, THE ABOVE SCALES MAY BE USED.

J.U.L.I.E.
JOINT UTILITY LOCATION INFORMATION FOR EXCAVATION
1-800-892-0123
OR 811

PROJECT ENGINEER: TIM PADGETT (618) 346-3325
PROJECT MANAGER: HERVE GELIN (618) 346-3323

CONTRACT NO. 76F96



GROSS LENGTH = 56000.00 FT. = 10.606 MILES
NET LENGTH = 3547.00 FT. = 0.672 MILE

STATE OF ILLINOIS
DEPARTMENT OF TRANSPORTATION
DIVISION OF HIGHWAYS

SUBMITTED December 13 20 12

[Signature]
DEPUTY DIRECTOR OF HIGHWAYS, REGION ENGINEER

Feb 1 20 13
John D. Baranzelli, P.E. /a
ENGINEER OF DESIGN AND ENVIRONMENT

Feb 1 20 13
Omer Osman, P.E. /a
DIRECTOR OF HIGHWAYS, CHIEF ENGINEER

**PRINTED BY THE AUTHORITY
OF THE STATE OF ILLINOIS**