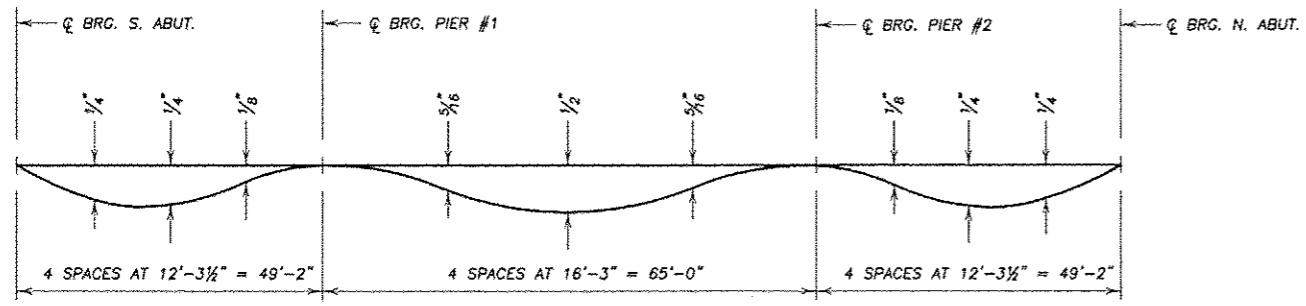


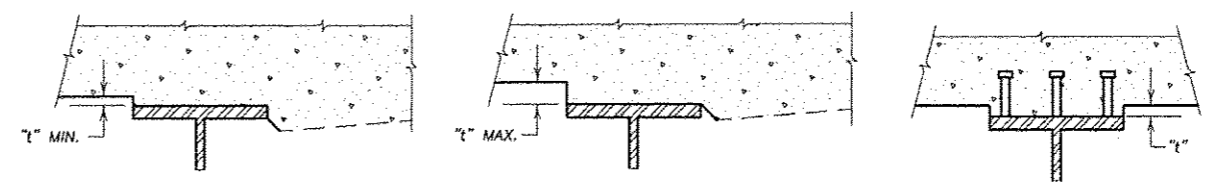
FAS ROUTE NO.	SEC	COUNTY	TOTAL SHEETS	SHEET NO.
188	*	LEE	22	9

ILLINOIS PROJECT BR5-188(121)
 * 08-00303-00-BR



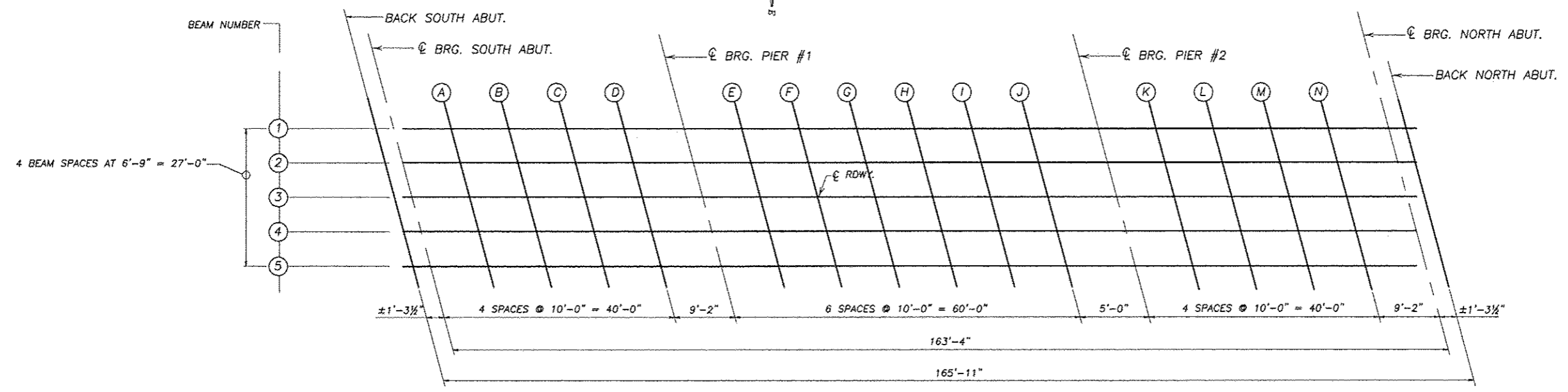
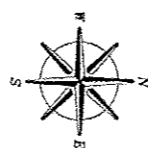
DEAD LOAD DEFLECTION DIAGRAM
 (INCLUDES WEIGHT OF CONCRETE ONLY)

NOTE: THE ABOVE DEFLECTIONS ARE NOT TO BE USED IN THE FIELD IF THE ENGINEER IS WORKING FROM THE GRADE ELEVATIONS ADJUSTED FOR DEAD LOAD DEFLECTIONS AS SHOWN BELOW.



FILLET HEIGHTS

NOTE: TO DETERMINE "l" - AFTER ALL STRUCTURAL STEEL HAS BEEN ERECTED, ELEVATIONS OF TOP FLANGES OF THE BEAMS SHALL BE TAKEN AT THE STATIONS SHOWN. THESE ELEVATIONS SUBTRACTED FROM THE THEORETICAL GRADE ELEVATIONS ADJUSTED FOR DEAD LOAD DEFLECTIONS, MINUS FLOOR THICKNESS, EQUALS THE FILLET HEIGHTS ABOVE TOP FLANGE OF BEAMS.



PLAN

DESIGNED:	DB
DRAWN:	BEH
CHECKED:	
DATE:	

DECK ELEVATIONS LAYOUT
 SECTION 08-00303-00-BR
 F.A.S. 188 (INDIAN HEAD RD.)
 LEE COUNTY
 S.N. 052-3413

REVISIONS	DATE

DESIGNED BY	DB
DRAWN BY	BEH
CHECKED BY	
DATE	12/13/2012

wendler
 wendler engineering services, inc.
 ENGINEERING & SURVEYING SOLUTIONS
 www.wendler.com
 1801 Professional Design Firm No. 10-000034

DECK ELEVATIONS LAYOUT
 OF
INDIAN HEAD ROAD BRIDGE REPLACEMENT
 FOR
LEE COUNTY HIGHWAY DEPARTMENT

SHEET TITLE
DECK ELEVATIONS LAYOUT

JOB NUMBER
 2080334

DATE
 12/13/2012

SHEET NO.
9 of 22