

FAS ROUTE NO	SEC	COUNTY	TOTAL SHEETS	SHEET NO
188	*	LEE	22	12

ILLINOIS PROJECT BRS-188(121)
* 08-00303-00-BR

SCALE: 1" = 12'

REVISIONS	
NO.	DATE

wendler
wender engineering services, inc.
GROUNDREPAIRING SOLUTIONS
engineers - architects - planners
www.wendlereng.com
Illinois Professional Design Firm No. 184-002848

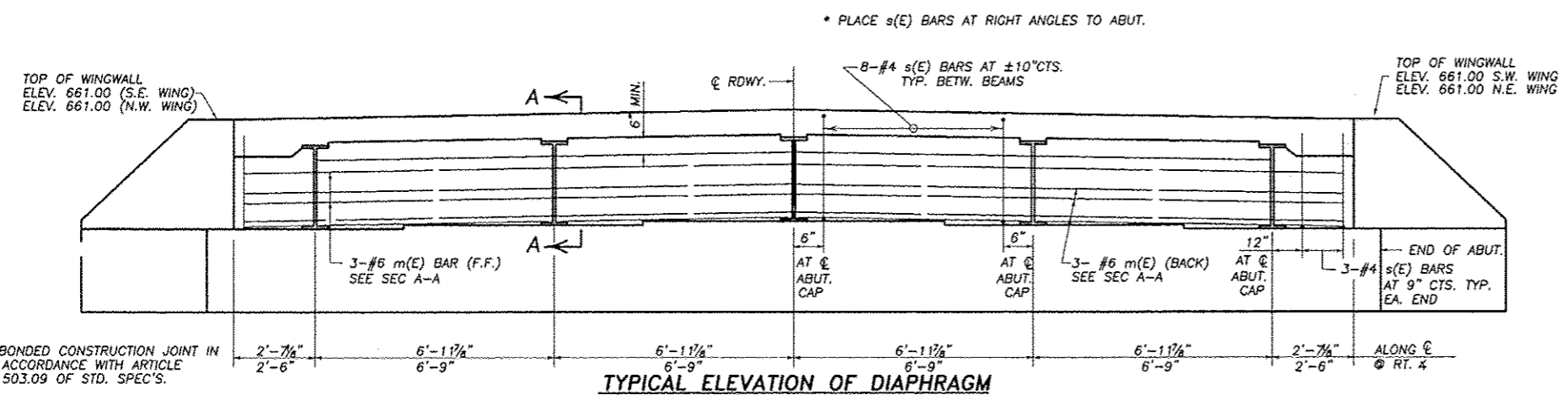
SUPERSTRUCTURE DETAILS
OF
INDIAN HEAD ROAD BRIDGE REPLACEMENT
FOR
LEE COUNTY HIGHWAY DEPARTMENT

SHEET TITLE
SUPER-
STRUCTURE
DETAILS

JOB NUMBER
2080334

DATE
12/13/2012

SHEET NO.
12 of 22



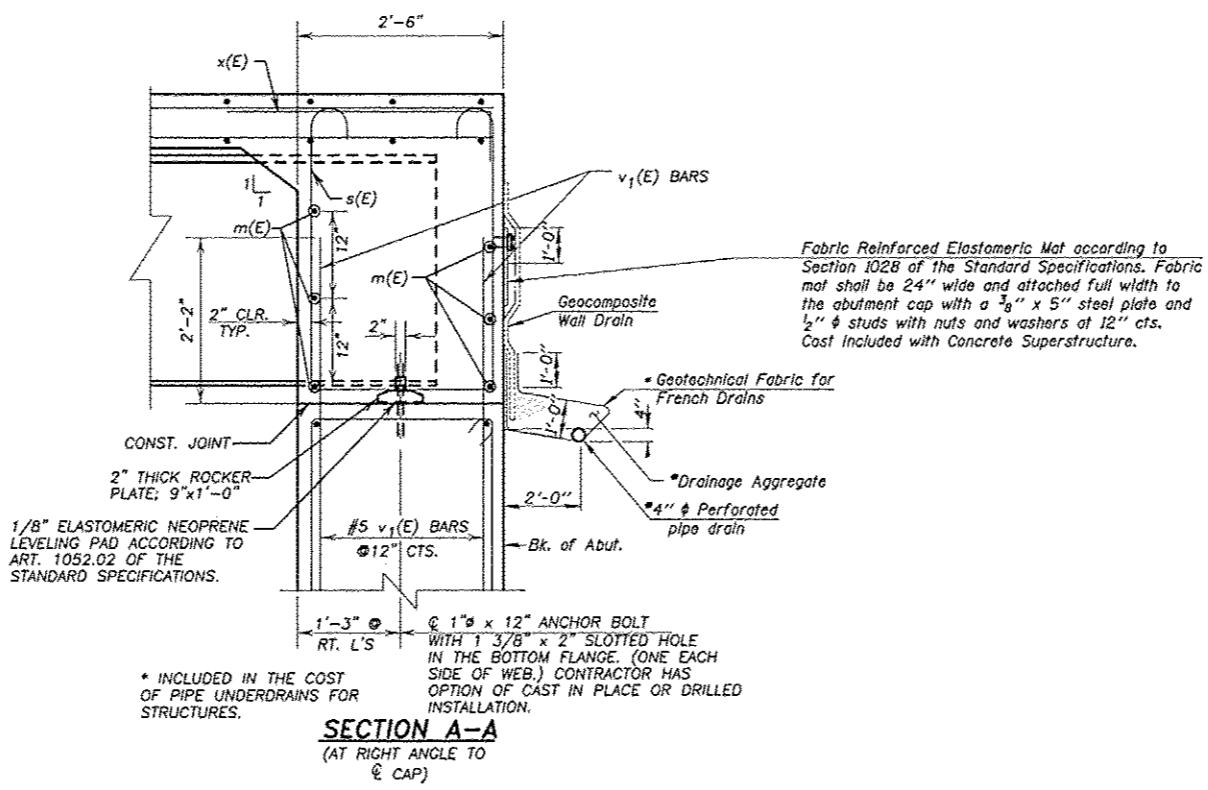
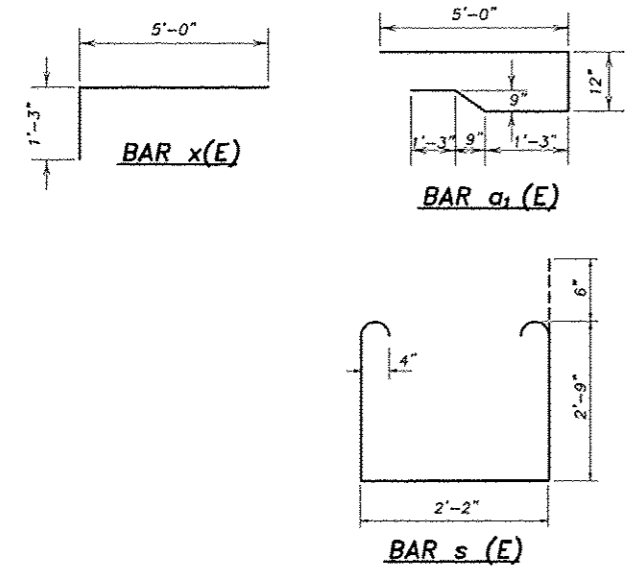
**BONDED CONSTRUCTION JOINT IN ACCORDANCE WITH ARTICLE 503.09 OF STD. SPEC'S.

TYPICAL ELEVATION OF DIAPHRAGM

BILL OF MATERIAL - SUPERSTRUCTURE

BAR	NO.	SIZE	LENGTH	SHAPE
a(E)	531	#5	31'-8"	—
a ₁ (E)	332	#6	9'-7"	—
b(E)	160	#5	35'-0"	—
b ₁ (E)	62	#6	34'-0"	—
b ₂ (E)	216	#5	29'-6"	—
m(E)	12	#6	32'-6"	—
s(E)	76	#4	8'-8"	—
x(E)	64	#6	6'-3"	—
CONCRETE SUPERSTRUCTURE			CU. YD.	162.9
REINFORCEMENT BARS EPOXY COATED			LBS.	39597
PROTECTIVE COAT **			SQ. YD.	652
BRIDGE DECK GROOVING			SQ. YD.	590

REINFORCEMENT BARS INDICATED (E) SHALL BE EPOXY COATED.
** INCLUDES TOP OF DECK AND EDGES TO THE DRIP NOTCH AND SIDES OF THE ABUTMENT DIAPHRAGMS.



* INCLUDED IN THE COST OF PIPE UNDERDRAINS FOR STRUCTURES.

DESIGNED:	DB
DRAWN:	BEH
CHECKED:	
DATE:	

SUPERSTRUCTURE DETAILS
SECTION 08-00303-00-BR
F.A.S. 188 (INDIAN HEAD RD.)
LEE COUNTY
S.N. 052-3413