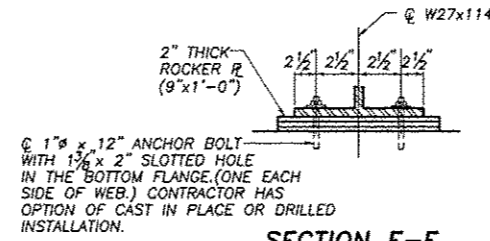


**INTERIOR BEAM MOMENT TABLE**  
(COMPOSITE IN POSITIVE AND NEGATIVE MOMENT AREA ONLY)

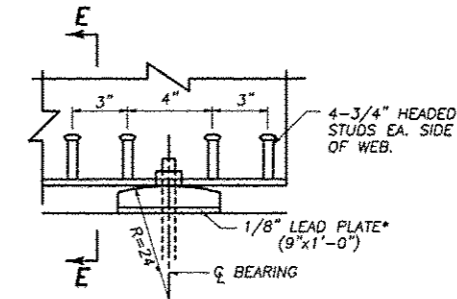
	0.4 SPAN 1 OR 0.5 SPAN 2	PIER
$I_s$ (in <sup>4</sup> )	4080	4080
$I_c$ (in <sup>4</sup> )(n)	13734	13734
$I_c$ (in <sup>4</sup> )(3n)	10571	10571
$S_s$ (in <sup>3</sup> )	299	299
$S_c$ (in <sup>3</sup> )(n)	496	496
$S_c$ (in <sup>3</sup> )(3n)	453	453
DC1(k/ft.)	0.71	0.71
M DC1(ft.-k)	160	274
DC2(k/ft.)	0.14	0.14
M DC2(ft.-k)	4	7
DW(ft.-k)	0.38	0.38
M DW(ft.-k)	66	113
(M <sub>LL</sub> +M <sub>IMP</sub> )(k)	506	440
Mu(STRENGTH) (ft.-k)	1190	1291
$f_s$ DC1(non-comp)(ksi)	6.48	11.04
$f_s$ DC2(comp)(ksi)	0.12	0.12
$f_s$ DW(ksi)	1.80	3.00
$f_s$ (LL+IM)(ksi)	12.24	10.64
$f_s$ (SERVICE II)(ksi)	24.31	27.99
$f_s$ (TOTAL)(STRENGTH)(k)	32.37	37.07
$M_f$ Mn	47.5	47.5
$V_f$	52	69

**INTERIOR BEAM REACTION TABLE**

	ABUTMENTS	PIERS
R DC1 (k)	12.5	46
R DC2 (k)	2.5	9
R DW (k)	6	22
R LL+IMP (k)	88	135
R TOTAL	109	212

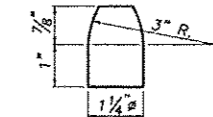


**SECTION E-E**

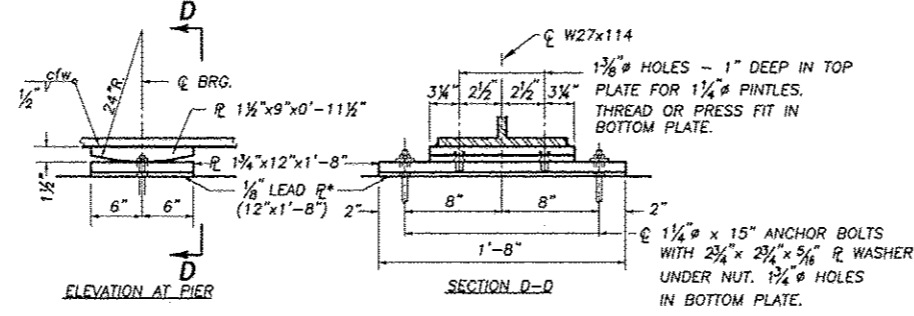


**ROCKER PLATE @ ABUTS**  
(10 REQUIRED)

\* 1/8" REINFORCED ELASTOMERIC NEOPRENE MAT MAY BE SUBSTITUTED. COST INCLUDED WITH STRUCTURAL STEEL.



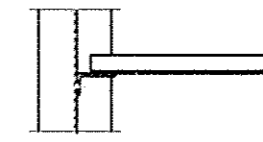
**DETAIL OF PINTLE**



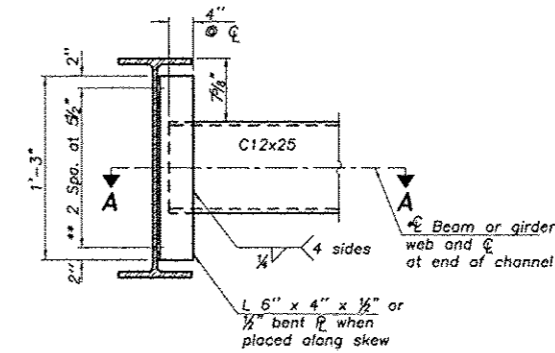
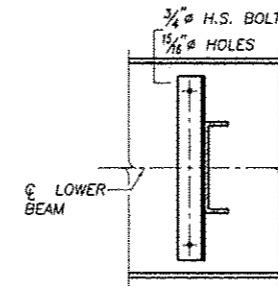
**FIXED BEARING - PIERS NO. 1 & 2**

(10 REQUIRED.)

\* 1/8" REINFORCED ELASTOMERIC NEOPRENE MAT MAY BE SUBSTITUTED. COST INCLUDED WITH STRUCTURAL STEEL.



**SECTION A-A**



NOTE: HARDENED WASHERS SHALL BE REQUIRED OVER 1 5/8" HOLES FOR DIAPHRAGM CONNECTIONS. (2 PER BOLT)

**DIAPHRAGM D1**

**PROPOSED TOP OF BEAM ELEVATIONS**

LOCATION	BEAM No.	1	2	3	4	5
☉ BRG. S. ABUT.		660.330	660.436	660.542	660.436	660.330
☉ BRG. PIER #1		660.288	660.394	660.500	660.394	660.288
TOP OF BEAM @ SPLICE		660.288	660.394	660.500	660.394	660.288
☉ BRG. PIER #2		660.288	660.394	660.500	660.394	660.288
TOP OF BEAM @ SPLICE		660.288	660.394	660.500	660.394	660.288
☉ BRG. N. ABUT.		660.330	660.436	660.542	660.436	660.330

FOR FABRICATION ONLY

DESIGNED:	DB
DRAWN:	BEH
CHECKED:	DB
DATE:	12/21/2012

STRUCTURAL STEEL DETAILS  
SECTION 08-00303-00-BR  
F.A.S. 188 (INDIAN HEAD RD.)  
LEE COUNTY  
S.N. 052-3413

REVISIONS

NO.	DATE	DESCRIPTION

www.wendler.com  
ph: 615.288.2261  
www.wendler.com  
ph: 615.288.2261  
www.wendler.com  
ph: 615.288.2261

**wendler**  
wender engineering services, inc.  
GROUND-BREAKING SOLUTIONS  
engineers - surveyors - geotechnical

STRUCTURAL STEEL DETAILS  
OF  
INDIAN HEAD ROAD BRIDGE REPLACEMENT  
FOR  
LEE COUNTY HIGHWAY DEPARTMENT

SHEET TITLE  
STRUCTURAL  
STEEL  
DETAILS

JOB NUMBER  
2080334

DATE  
12/13/2012

SHEET NO.  
14 of 22