

FAS ROUTE NO	SEC	COUNTY	TOTAL SHEETS	SHEET NO
188	*	LEE	22	16

ILLINOIS PROJECT BRS-188(121)

* 08-00303-00-BR

SCALE: 1"=

NO.	DATE	REVISIONS

DESIGNED BY	DRAWN BY	CHECKED BY	DATE
DB	BEH		

wendler
 wendler engineering services, inc.
 GEOTECHNICAL SOLUTIONS
 ENGINEERS - SURVEYORS - SOLE PRACTITIONERS
 www.wendlereng.com pr: 815.288.2281
 Illinois Professional Design Firm No. 134-000848

PIERS OF INDIAN HEAD ROAD BRIDGE REPLACEMENT FOR LEE COUNTY HIGHWAY DEPARTMENT

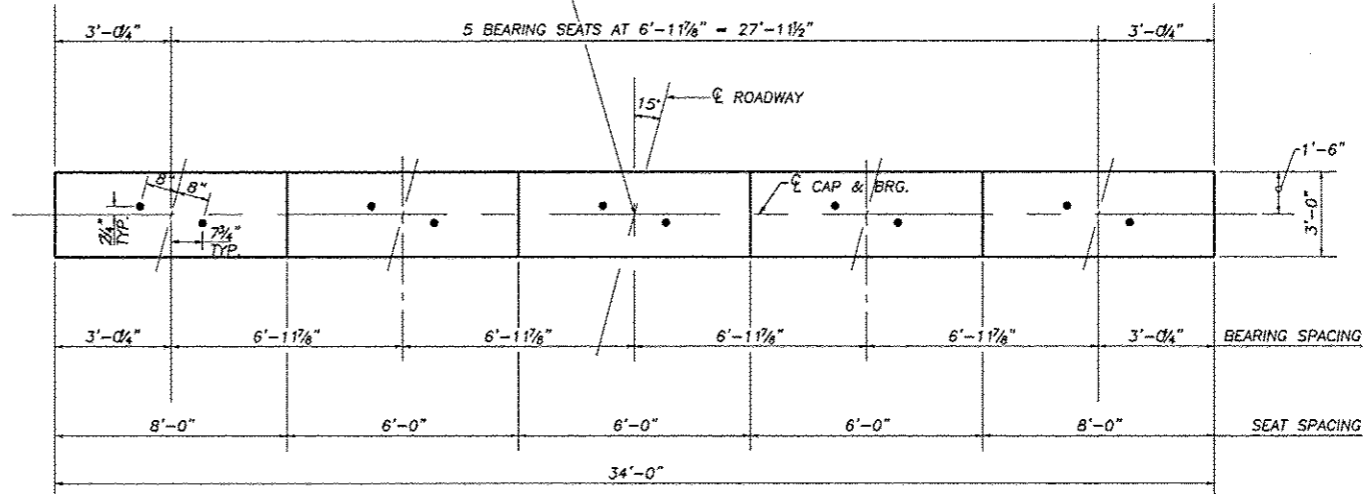
SHEET TITLE
PIERS

JOB NUMBER
2080334
DATE
12/13/2012
SHEET NO.
16 of 22

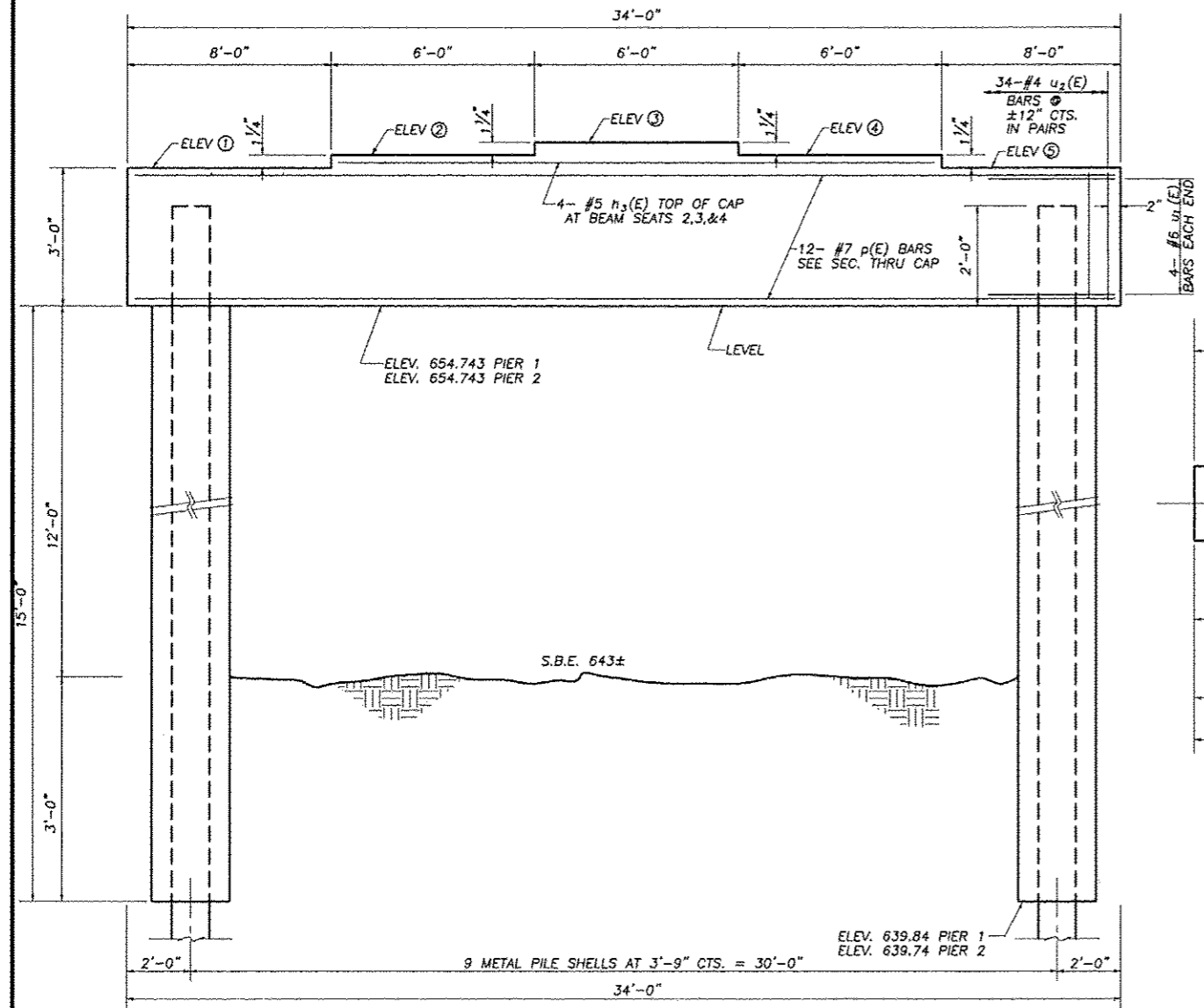
BEAM SEAT ELEVATIONS

PIER 1		BEAM SEATS				
①	②	③	④	⑤		
657.743	657.839	657.944	657.839	657.743		
PIER 2		BEAM SEATS				
①	②	③	④	⑤		
657.743	657.839	657.944	657.839	657.743		

BRG.
PIER 1 STA. 9+67.50
PIER 2 STA. 10+32.50



PLAN - PIERS 1 & 2



ELEVATION - PIERS 1 & 2 (LOOKING NORTH)

PILE DATA

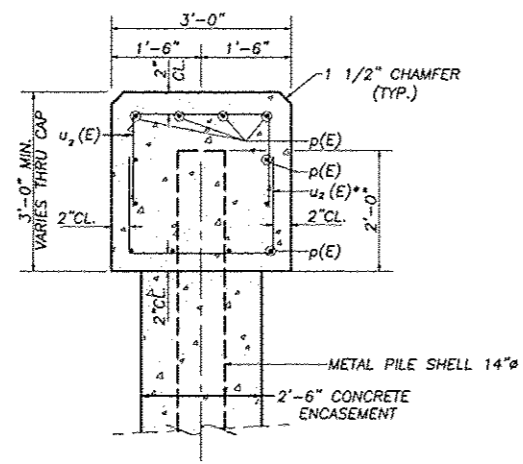
TYPE METAL PILE SHELLS 14"Ø

NOMINAL REQUIRED BEARING 348K
ALLOWABLE RESISTANCE AVAILABLE 183K

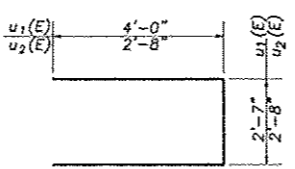
EST. LENGTH PIER 1 54 FT.
PIER 2 58 FT.

NO. REQUIRED PIER 1 8+1 TEST PILE
PIER 2 9

METAL SHELL PILES SHALL BE ACCORDING TO ASTM A252 GRADE 3



SECTION THRU CAP * u₂(E) BARS IN PAIRS



BARS u₁(E), u₂(E)

GENERAL NOTES

SPACE BARS TO MISS ANCHOR BOLTS.
FOUR STEPS MONOLITHICALLY WITH CAP.

BILL OF MATERIAL - PIERS

BAR NO.	SIZE	LENGTH	SHAPE
h ₃ (E)	#5	17'-8"	—
p(E)	#7	33'-8"	—
u ₁ (E)	#6	10'-7"	□
u ₂ (E)	#4	8'-0"	□
CONCRETE STRUCTURES			CU. YD. 21.8
FURNISHING METAL SHELL PILES 14"Ø.250'			FOOT 954
DRIVING PILES			FOOT 954
TEST PILE - METAL SHELLS			EACH 1
REINFORCEMENT BARS EPOXY COATED			LBS. 5560

REINFORCEMENT BARS DESIGNATED (E) SHALL BE EPOXY COATED.

PIERS SECTION 08-00303-00-BR
F.A.S. 188 (INDIAN HEAD RD.)
LEE COUNTY
S.N. 052-3413

DESIGNED:	DB
DRAWN:	BEH
CHECKED:	
DATE:	