

CONSULTANT SERVICES: COREY STOUT 815-965-6400
email: coreys@missman.com

PROJECT MANAGER: (WINNEBAGO CO.) DAVID TOWNSEND 815-319-4035
email: dtownsend@co.winnebago.il.us

INDEX OF SHEETS

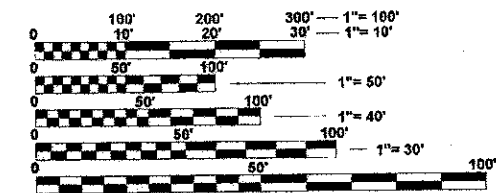
- 1 COVER SHEET, UTILITY CONTACTS
- 2 GENERAL NOTES, TYPICAL SECTIONS, PAVEMENT DESIGN
- 3 SUMMARY OF QUANTITIES AND SCHEDULE OF QUANTITIES
- 4 ALIGNMENT, TIES, BENCHMARKS AND REMOVAL PLAN
- 5 PLAN AND PROFILE
- 6 DETOUR PLAN
- 7 EROSION CONTROL PLAN
- 8 - 14 BRIDGE PLANS (INCLUDING BORING LOGS)
- 15 CROSS SECTIONS
- 16 D.S. 41.1 TYPICAL PAVEMENT MARKINGS (DIST STD 41.1)

HIGHWAY STANDARDS

- 280001-07 TEMPORARY EROSION CONTROL SYSTEMS
- 515001-03 NAME PLATE FOR BRIDGES
- 630001-10 STEEL PLATE BEAM GUARDRAIL
- 630101-09 GUARDRAIL MOUNTED ON EXISTING CULVERTS
- 630301-06 SHOULDER WIDENING FOR TYPE 1 (SPECIAL) GUARDRAIL TERMINALS
- 635006-03 REFLECTOR AND TERMINAL MARKER PLACEMENT
- 635011-02 REFLECTOR MARKER AND MOUNTING DETAILS
- 701006-04 OFF-RD OPERATIONS, 2L, 2W, 15' TO 24" FROM PAVEMENT EDGE
- 701201-04 LANE CLOSURE, 2L, 2W, DAY ONLY, FOR SPEEDS ≥ 45 MPH
- 701301-04 LANE CLOSURE, 2L, 2W, SHORT TIME OPERATIONS
- 701311-03 LANE CLOSURE, 2L, 2W, MOVING OPERATIONS - DAY ONLY
- 701901-02 TRAFFIC CONTROL DEVICES
- 720001-01 SIGN PANEL MOUNTING DETAILS
- 720006-03 SIGN PANEL ERECTION DETAILS
- 720011-01 METAL POSTS FOR SIGNS, MARKERS & DELINEATORS
- 728001-01 TELESCOPING STEEL SIGN SUPPORT
- 729001-01 APPLICATIONS OF TYPES A & B METAL POSTS (FOR SIGNS & MARKERS)
- 731001-01 BASE FOR TELESCOPING STEEL SIGN SUPPORT
- 780001-03 TYPICAL PAVEMENT MARKINGS
- 781001-03 TYPICAL APPLICATIONS RAISED REFLECTIVE PAVEMENT MARKERS
- 000001-06 STANDARD SYMBOLS, ABBREVIATIONS AND PATTERNS
- 001001-02 AREAS OF REINFORCEMENT BARS
- 001006 DECIMAL OF AN INCH AND OF A FOOT
- BLR 21-9 TYPICAL APPLICATION OF TRAFFIC CONTROL DEVICES FOR CONSTRUCTION ON RURAL HIGHWAYS

UTILITY CONTACTS

- | | | |
|---|---|---|
| American Transmission Company
c/o Julie Purves
2 Fen Oak Court
Madison, WI 53718-8810
(608) 877-3631 | Charter Communications
c/o Tom Phillips
1348 Plainfield Ave
Janesville, WI 53547
(608) 373-7537 | North Park Public Water
c/o Ed Rice
1350 Turret Drive
Machesney Park, IL 61115
(815) 633-5461 |
| Frontier Communications
c/o Don Belmore
2239 Newburg Road
Belvidere, IL 61008
(815) 544-6171 | PAETEC
c/o Paul Baumann
1815 S. Meyers Road, Suite
900
Oak Brook Terrace, IL 60181
(630) 925-4751 | Rock Energy Cooperative
c/o Rod Magnuson
15229 Willow Brook Road
South Beloit, IL
61080-0126
(866) 752-4550 |
| Rock River Water Reclamation
3333 Kishwaukee Street
P.O. Box 7480
Rockford, IL 61126-7480
(815) 387-7400 | | |

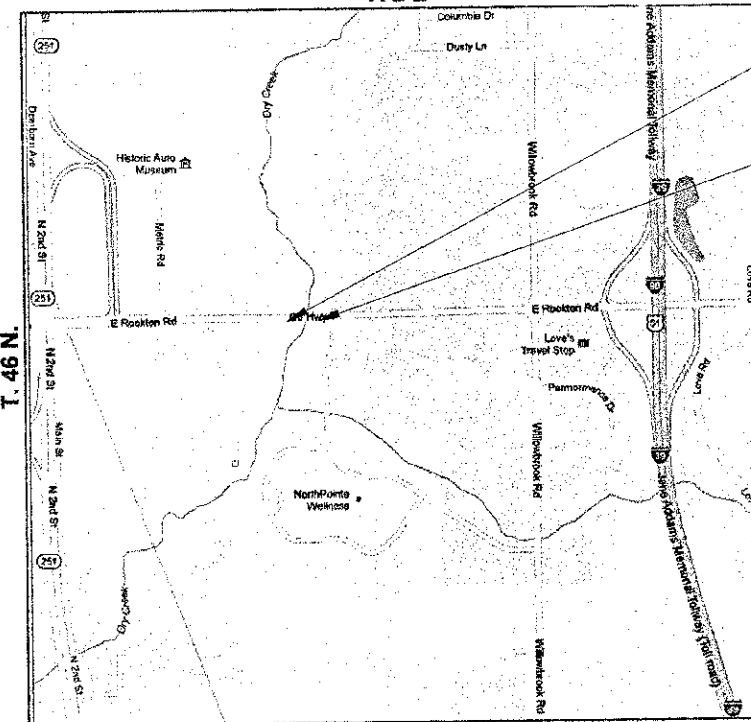
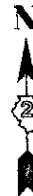


FULL SIZE PLANS HAVE BEEN PREPARED USING STANDARD ENGINEERING SCALES. REDUCED SIZED PLANS WILL NOT CONFORM TO STANDARD SCALES. IN MAKING MEASUREMENTS ON REDUCED PLANS, THE ABOVE SCALES MAY BE USED.

STATE OF ILLINOIS
DEPARTMENT OF TRANSPORTATION
DIVISION OF HIGHWAYS

**PLANS FOR PROPOSED
HIGHWAY BRIDGE PROGRAM**

FAU 9878 C.H. 9 (ROCKTON ROAD)
OVER DRY RUN CREEK
SECTION 12-00356-01-BR
PROJECT BRM-5291 (018)
JOB NUMBER C-92-114-12
CONTRACT NO. 85577
WINNEBAGO COUNTY



LOCATION MAP
(NOT TO SCALE)

PROJECT LENGTH

GROSS LENGTH = 160 FT. = 0.03 MILE
NET LENGTH = 160 FT. = 0.03 MILE



PROJECT BEGINS
STA 124+83
PROJECT ENDS
STA 126+43

TRAFFIC DATA:
FUNCTIONAL CLASSIFICATION: RURAL ARTERIAL
2032 ADT: 11,100 88% PU, 7% SU, 5% MU
DESIGN SPEED: 60 MPH
CLASS II TRUCK ROUTE

PREPARED BY:
Missman, Inc.
Professional Engineers & Land Surveyors
ILLINOIS DESIGN FIRM NO. 184-000843

I HEREBY CERTIFY THAT THESE PLANS WERE PREPARED BY ME OR UNDER MY DIRECT SUPERVISION AND THAT I AM A DULY REGISTERED PROFESSIONAL ENGINEER UNDER THE LAWS OF THE STATE OF ILLINOIS.

Corey J. Stout
COREY J. STOUT DATE 1/16/13
REC. NO. 062-052830 RENEWAL DATE 11/30/2013

F.A.U. RTE.	SECTION	COUNTY	TOTAL SHEETS	SHEET NO.
9878	12-00356-01-BR	WINNEBAGO	18	1
ILLINOIS CONTRACT NO. 85577				



J.U.L.I.E.
JOINT UTILITY LOCATION INFORMATION FOR EXCAVATION
1-800-892-0123
OR 811

APPROVED *January 16/2013*
Paul A. Wetmore
COUNTY ENGINEER

PASSED *January 22, 2013*
Joe T. Johnson
DISTRICT ENGINEER OF LOCAL ROADS & STREETS

RELEASED FOR BID SET ON LIMITED REVIEW *January 22, 2013*
Paul A. Wetmore
DEPUTY DIRECTOR OF HIGHWAYS/REGION 2 ENGINEER

**PRINTED BY THE AUTHORITY
OF THE STATE OF ILLINOIS**