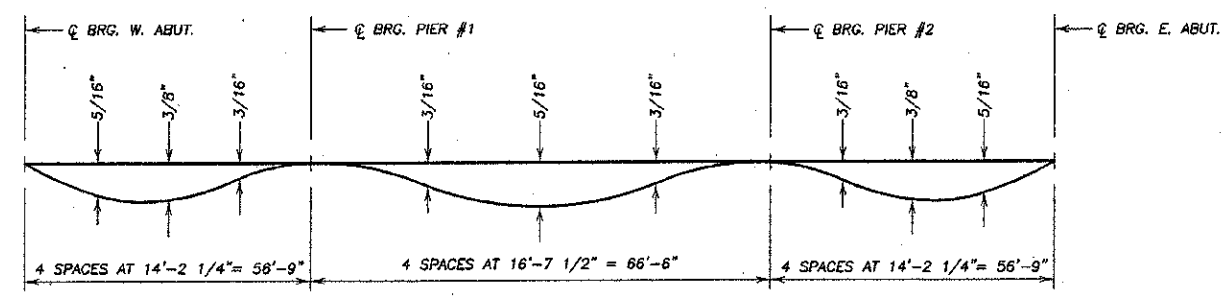


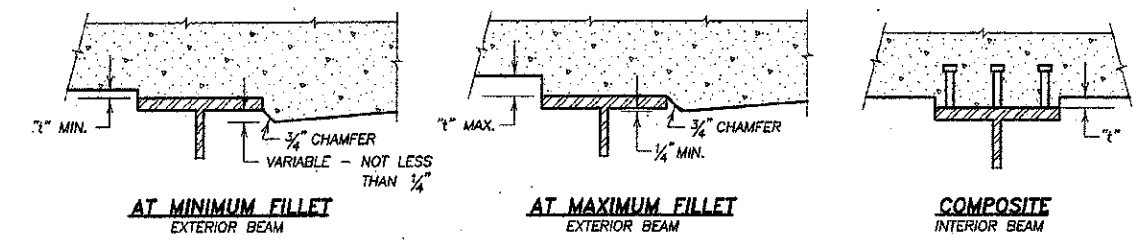
Print mod. Filed for clarity.
2/22/13

TWP. RTE. NO.	SEC.	COUNTY	TOTAL SHEETS	SHEET NO.
61	*	DEKALB	18	5
ILLINOIS PROJECT BRCS-0037(051)				
* 08-18121-00-BR				
CONTRACT NO. 67467				



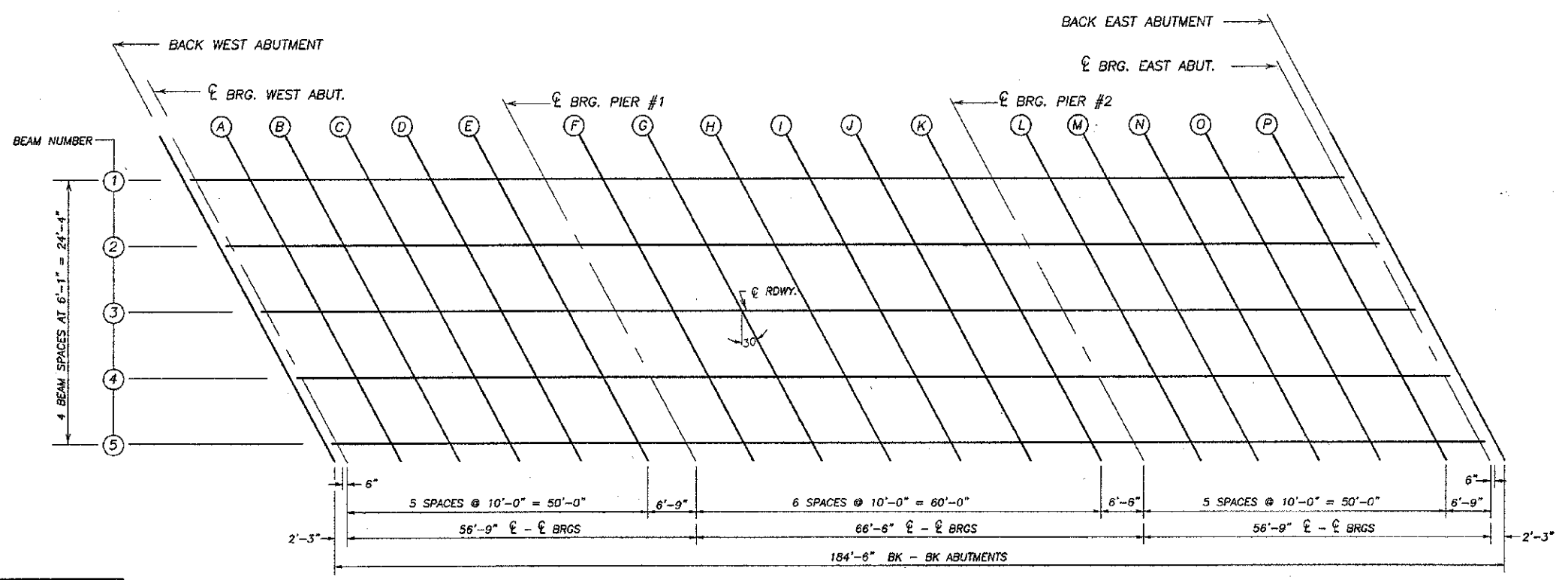
DEAD LOAD DEFLECTION DIAGRAM
(INCLUDES WEIGHT OF CONCRETE ONLY)

NOTE: THE ABOVE DEFLECTIONS ARE NOT TO BE USED IN THE FIELD IF THE ENGINEER IS WORKING FROM THE GRADE ELEVATIONS ADJUSTED FOR DEAD LOAD DEFLECTIONS AS SHOWN BELOW.



NOTE: TO DETERMINE "t" - AFTER ALL STRUCTURAL STEEL HAS BEEN ERECTED, ELEVATIONS OF TOP FLANGES OF THE BEAMS SHALL BE TAKEN AT THE STATIONS SHOWN. THESE ELEVATIONS SUBTRACTED FROM THE THEORETICAL GRADE ELEVATIONS ADJUSTED FOR DEAD LOAD DEFLECTIONS, MINUS FLOOR THICKNESS, EQUALS THE FILLET HEIGHTS ABOVE TOP FLANGE OF BEAMS.

FILLET HEIGHTS



PLAN

DECK LAYOUT
SECTION 08-18121-00-BR
DEKALB COUNTY
S.N. 019-4500

DESIGNED:	RLR
DRAWN:	BDS
CHECKED:	
DATE:	

NO.	DATE	REVISIONS

DESIGNED BY	RLR
DRAWN BY	BDS
CHECKED BY	
DATE	

wendler
GROUND-BREAKING SOLUTIONS
ENGINEERING SERVICES
www.wendlerg.com
PH: 815.288.2281
1145 Professional Design Firm No. 154-006618

DECK ELEVATION LAYOUT
OF
BASE LINE ROAD BRIDGE PROJECT
FOR
DEKALB COUNTY HIGHWAY

SHEET TITLE
DECK ELEVATION LAYOUT

JOB NUMBER
2080382

DATE
12/14/2012

SHEET NO.
5 of 18