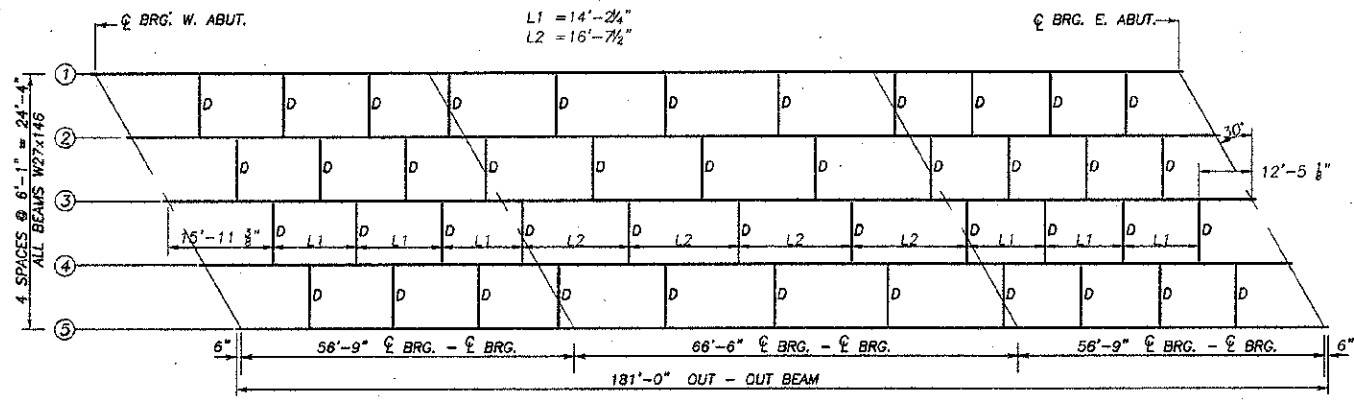
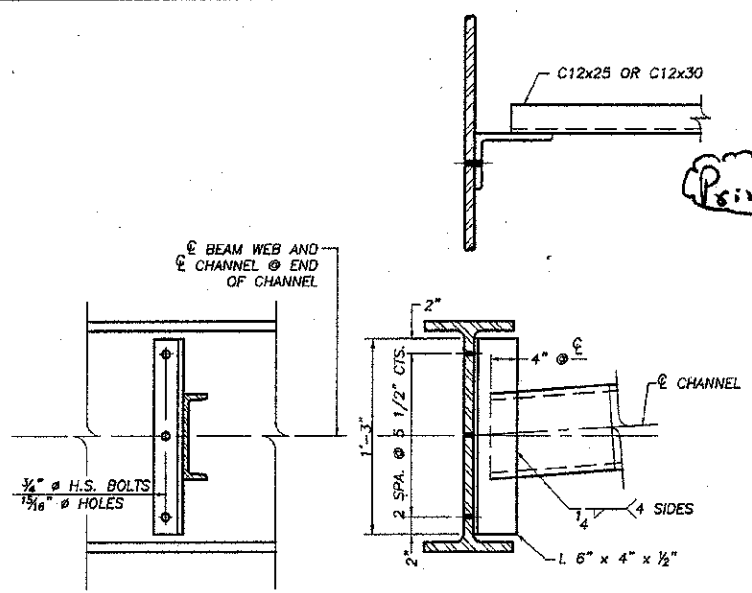


TWP. NO.	SEC.	COUNTY	TOTAL SHEETS	SHEET NO.
61		DEKALB	18	11

ILLINOIS PROJECT BRCS-0037(051)
 * 08-18121-00-BR
 CONTRACT NO. 87467

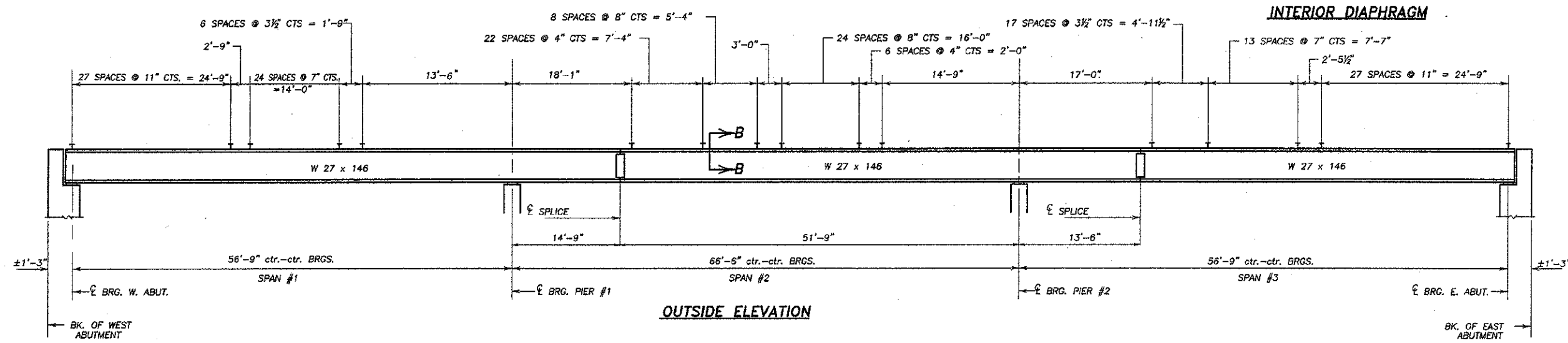


STEEL FRAMING PLAN

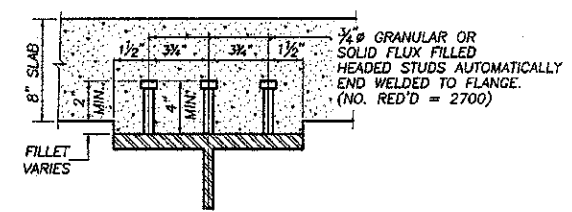


NOTE: TWO HARDENED WASHERS REQUIRED FOR EACH SET OF OVERIZED HOLES.

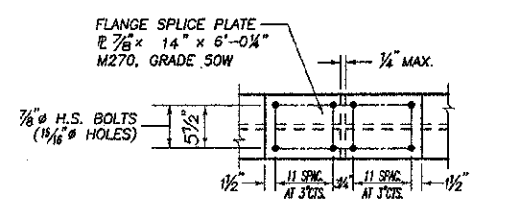
Print modified for clarity.
 2/22/13



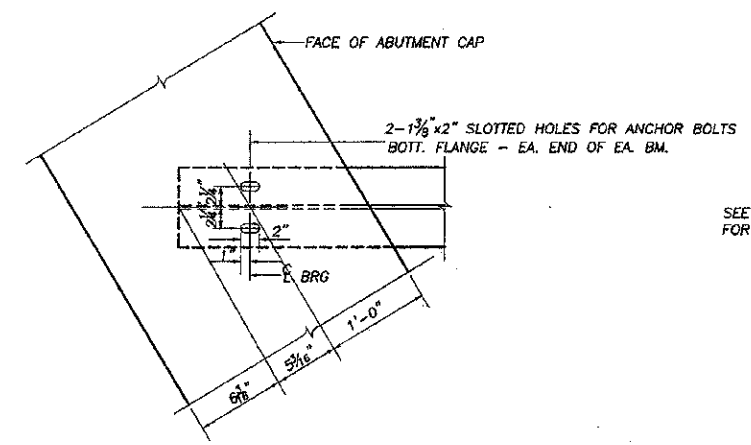
OUTSIDE ELEVATION



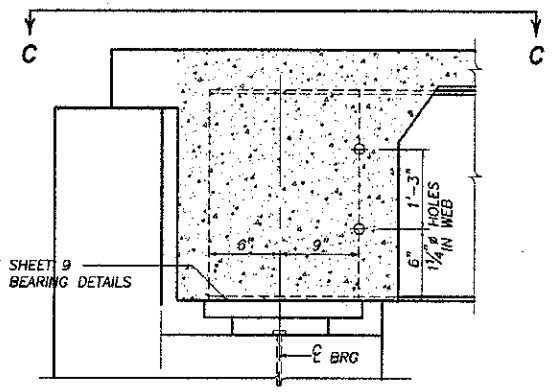
SECTION B-B



DETAIL OF SPLICE
 (ALL SPLICE PLATES N.T.R.)



DETAIL C-C



SECTION AT ABUT.
 (ALONG BEAM E)

PROPOSED TOP OF BEAM ELEVATIONS *

LOCATION	BEAM No.	1	2	3	4	5
BRG. W. ABUT.		807.67	807.77	807.87	807.77	807.67
BRG. W. PIER (#1)		807.67	807.77	807.87	807.77	807.67
BRG. E. PIER (#2)		807.67	807.77	807.87	807.77	807.67
BRG. E. ABUT.		807.67	807.77	807.87	807.77	807.67

* ALLOW FOR 1 1/2" POSITIVE FILLET

DESIGNED:	RLR
DRAWN:	BDS
CHECKED:	
DATE:	

SCALE: 1" = 10'

REVISIONS

NO.	DATE	DESCRIPTION

DESIGNED BY: RLR
 DRAWN BY: RLR
 CHECKED BY: BDS
 DATE: 2/6/2013

wendler
 GROUND-BREAKING SOLUTIONS
 engineers, surveyors, scientists
 www.wendlergs.com ph: 815.288.2281
 Illinois Professional Design Firm No. 194.008848

STRUCTURAL STEEL DETAILS
 OF
 BASE LINE ROAD BRIDGE PROJECT
 FOR
 DEKALB COUNTY HIGHWAY

SHEET TITLE
**STEEL
 DETAILS**

JOB NUMBER
 2080382
 DATE
 2/6/2013
 SHEET NO.
11 of 18

STRUCTURAL STEEL DETAILS
 SECTION 08-18121-00-BR
 BASE LINE ROAD
 DEKALB COUNTY
 SN 019-4500