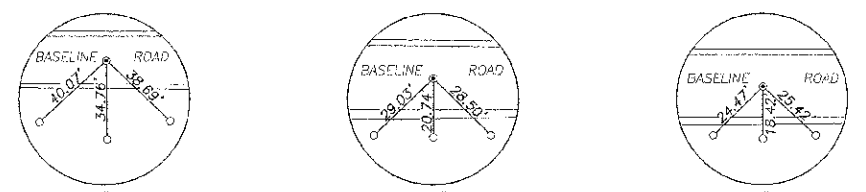
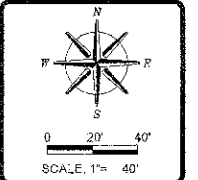


TWP. RTE. NO.	SEC.	COUNTY	TOTAL SHEETS	SHEET NO.
61	*	DEKALB	18	3

ILLINOIS PROJECT BROS-0037(051)
 * 08-16121-00-BR
 CONTRACT NO. 87467



CONTROL POINT #10 - STA. 11+43.91
 SET SURVEY NAIL
 ALL TIES ARE SET 5/8" STEEL PINS

CONTROL POINT #11 - STA. 19+92.38
 SET SURVEY NAIL
 ALL TIES ARE SET 5/8" STEEL PINS

CONTROL POINT #12 - STA. 22+81.63
 SET SURVEY NAIL
 ALL TIES ARE SET 5/8" STEEL PINS

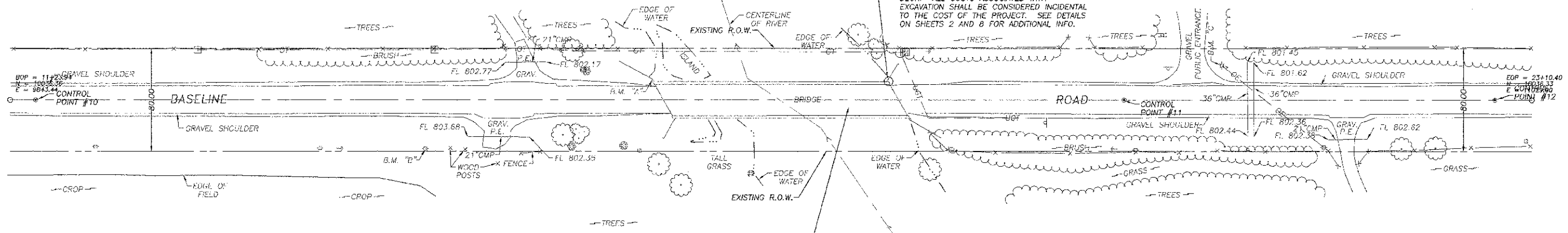
BENCHMARK INFORMATION

S.M. "A" - FOUND MASONRY NAIL IN TOP OF NORTHWEST WINDOW OF EXISTING STRUCTURE. ELEV=809.18

S.M. "B" - SET RAILROAD SPIKE IN SECOND POWER POLE WEST OF BRIDGE, SOUTH SIDE OF ROAD. ELEV=807.82

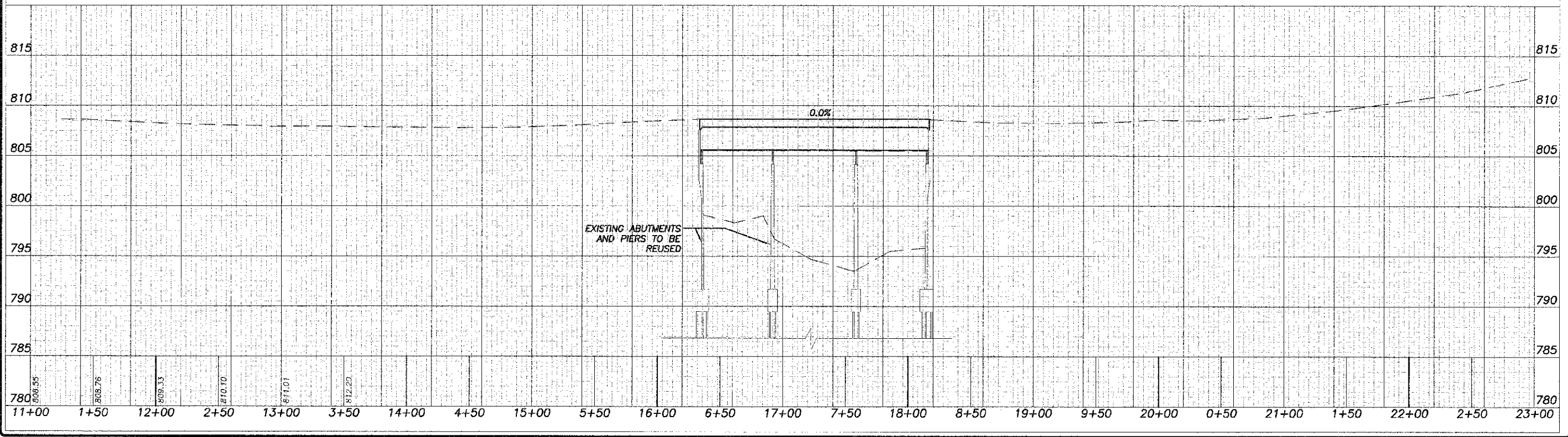
S.M. "C" - SET RAILROAD SPIKE IN LIGHT POLE ON THE EAST SIDE OF ENTRANCE TO PARKING AREA FOR "KNUTE OLSON JR. FOREST PRESERVE" NORTH SIDE OF ROAD, ±250' EAST OF BRIDGE. ELEV=807.33

EXCAVATION WILL BE REQUIRED AT FOUR CORNERS FOR STRUCTURAL REPAIR OF CONCRETE AND BACKWALL/WINGWALL MODIFICATIONS AND AT END OF EXISTING DECK. ALL COSTS ASSOCIATED WITH EXCAVATION SHALL BE CONSIDERED INCIDENTAL TO THE COST OF THE PROJECT. SEE DETAILS ON SHEETS 2 AND 8 FOR ADDITIONAL INFO.



STRUCTURE NO. 019-4500
 NEW SUPERSTRUCTURE INCLUDING, POURED DECK, STEEL COMPOSITE W27X146 I-BEAMS, AND BEARINGS SUPPORTED BY EXISTING ABUTMENTS AND PIERS. SEATS TO BE ADJUSTED AS REQUIRED TO ACCOMMODATE NEW SUPERSTRUCTURE. EXISTING WINGWALLS TO REMAIN IN PLACE. WORK ALSO INCLUDES CONCRETE REPAIR TO EXISTING SUBSTRUCTURE.

SCALES:
 1" = 40' HOR
 1" = 5' VER



REVISIONS

NO.	DATE	DESCRIPTION

DESIGNED BY: _____
 CHECKED BY: _____
 DRAWN BY: _____
 DATE: 2/20/12
 SURVEYED BY: _____
 JOB NO.: _____

wendler
 GROUND-BREAKING SOLUTIONS
 engineers - surveyors - scientists
 www.wendlergs.com ph: 815.288.2281
 Illinois Professional Design Firm No. 184.002848

PLAN AND PROFILE
 OF
 BASELINE ROAD BRIDGE PROJECT
 FOR
 DEKALB COUNTY HIGHWAY

SHEET TITLE
PLAN & PROFILE

JOB NUMBER
 2083382

DATE
 12/14/2012

SHEET NO.
3 of 18