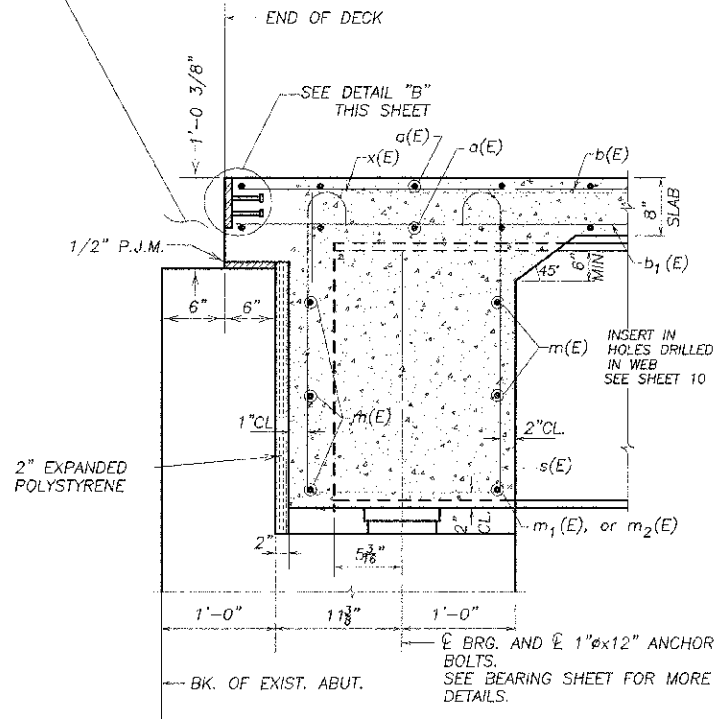


**BONDED CONSTRUCTION JOINT IN ACCORDANCE WITH ARTICLE 503.09 OF STD. SPEC'S.

NOTE: PAVEMENT REMOVED TO ALLOW FOR CONSTRUCTION OF NEW BRIDGE SUPERSTRUCTURE SHALL BE REPLACED IN LIKE KIND WITH COSTS BEING INCIDENTAL TO THE COST OF THE PROJECT.



SECTION A-A
 DIM. @ RIGHT ANGLES TO ABUT.

BEAM MOMENT TABLE

	THREE SPAN UNIT		
	0.4 SPAN 1 0.6 SPAN 3	PIER 1 OR 2	0.5 SPAN 2
I _s (in ⁴)	5660	5660	5660
I _c (in ⁴)(n)	15173	0	15173
I _c (in ⁴)(3n)	11380	0	11380
S _e (in ³)	414	414	414
S _c (in ³)(n)	599	0	599
S _c (in ³)(3n)	546	0	546
DC1 (k/ft)	0.78	0.78	0.78
M _{DC1} (ft.-k)	182	-294	135
DC2 (k/ft)	0.025	0.025	0.025
M _{DC2} (ft.-k)	6	-9	5
DW (k/ft)	0.3	0.3	0.3
M _{DW} (ft.-k)	76	-104	64
M _{LL+M} (ft.-k)	572	-385	548
M _U (Str. I)(ft.-k)	1352	-1208	1231
φ _f M _n (ft.-k)	2850	1487	2852
f _s DC1 (ksi)	5.5	8.5	4.0
f _s DC2 (ksi)	0.2	0.3	0.2
f _s DW (ksi)	1.7	3.0	1.4
f _s 1.3(LL+M)(ksi)	14.95	11.2	14.3
f _s (Service II)(ksi)	22.35	23.0	19.9
V _f (k)	15	24	16

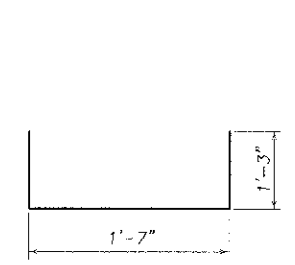
BILL OF MATERIAL - SUPERSTRUCTURE

BAR	NO.	SIZE	LENGTH	SHAPE
a(E)	539	#5	29'-8"	—
a ₁ (E)	316	#6	9'-8"	—
m(E)	10	#6	31'-9"	—
m ₁ (E)	8	#6	6'-8"	—
m ₂ (E)	4	#6	1'-8"	—
b(E)	186	#5	32'-7"	—
b ₁ (E)	224	#5	28'-3"	—
b ₂ (E)	60	#6	21'-4"	—
s(E)	76	#4	7'-10"	□
s ₁ (E)	164	#4	4'-1"	□
p(E)	60	#6	6'-8"	—
x(E)	60	#6	6'-3"	—
CONCRETE SUPERSTRUCTURE			CU. YD.	145.5
REINFORCEMENT BARS EPOXY COATED			LBS.	38690
PROTECTIVE COAT **			SQ. YD.	665.5
BRIDGE DECK GROOVING			SQ. YD.	611.2

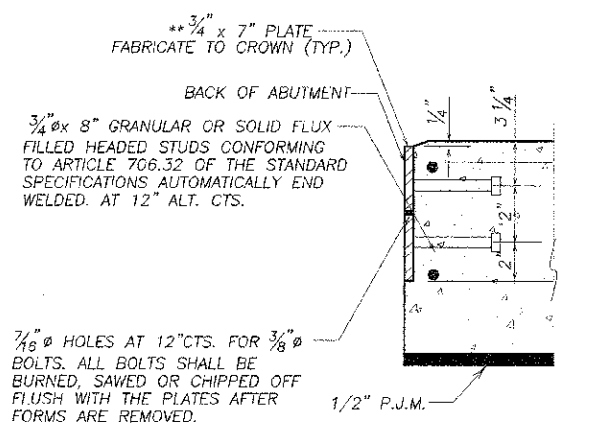
REINFORCEMENT BARS INDICATED (E) SHALL BE EPOXY COATED. SEE SHEET 7 OF 12 FOR SUPERSTRUCTURE DETAILS

** INCLUDES TOP OF DECK AND EDGES TO THE DRIP NOTCH.

BAR s(E)



BAR s₁(E)



DETAIL "B"

NOTE: AFTER FABRICATION ALL SURFACES OF THE STEEL PLATES SHALL BE GIVEN ONE SHOP COAT OF PAINT SPECIFIED FOR STRUCTURAL STEEL. NO FIELD PAINTING REQUIRED.

BEAM REACTION TABLE

	ABUTMENTS	PIER
R _{DC1} (k)	17.3	53.5
R _{DC2} (k)	0.7	1.5
R _{DW} (k)	7	20
R _{LL+M} (k)	73	92
R _{TOTAL} (k)	98	167

DESIGNED:	RLR
DRAWN:	BDS
CHECKED:	
DATE:	

REVISIONS

NO.	DATE	DESCRIPTION

DESIGNED BY: RLR
 DRAWN BY: BDS
 CHECKED BY:
 DATE:
 DRAWING NAME:
 SURVEYOR:
 BRIDGE NO:
 ILLINOIS PROFESSIONAL ENGINEER No. 184-000340

wendler
 CROWDBREAKING SOLUTIONS
 engineers - surveyors - scientists
 www.wendler.com ph: 615 933 2201
 Illinois Professional Engineer No. 184-000340

SUPERSTRUCTURE DETAILS
 OF
 BASE LINE ROAD BRIDGE PROJECT
 FOR
 DEKALB COUNTY HIGHWAY

SHEET TITLE
 SUPER
 STRUCTURE
 DETAIL

JOB NUMBER
 2080362

DATE
 12/14/2012

SHEET NO.

8 of 18

SUPERSTRUCTURE DETAILS
 SECTION 08-18121-00-BR
 DEKALB COUNTY
 S.N. 019-4500