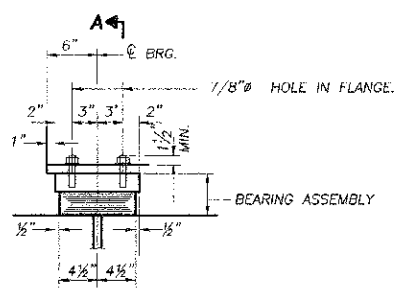
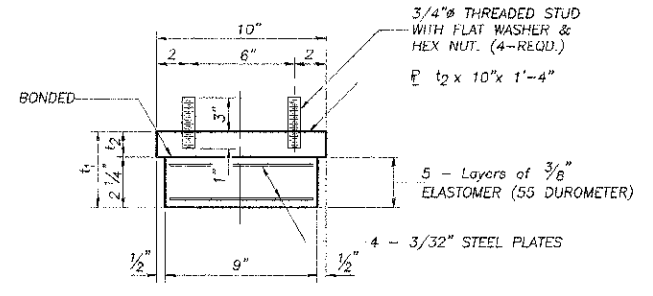


SIDE RETAINER - TYPE A
Equivalent rolled angle with stiffeners will be allowed in lieu of welded plates. (30 REQUIRED)

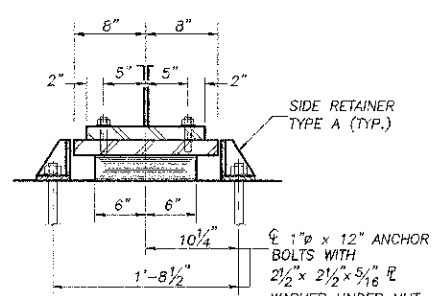
NOTE: THE STRUCTURAL STEEL BEARING PLATES OF THE ELASTOMERIC BEARING ASSEMBLY SHALL CONFORM TO THE REQUIREMENTS OF AASHTO M270 GRADE 50.



ELEVATION

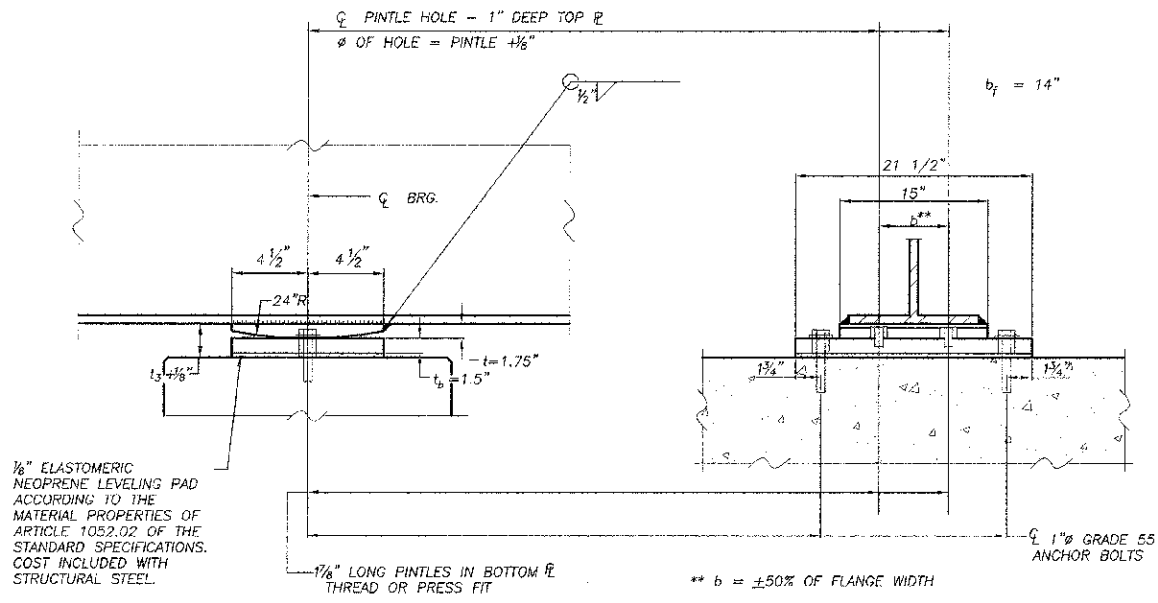


BEARING ASSEMBLY
Note: Shim plates shall not be placed under Bearing Assembly.

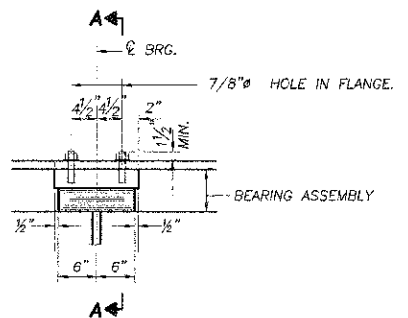


SECTION A-A

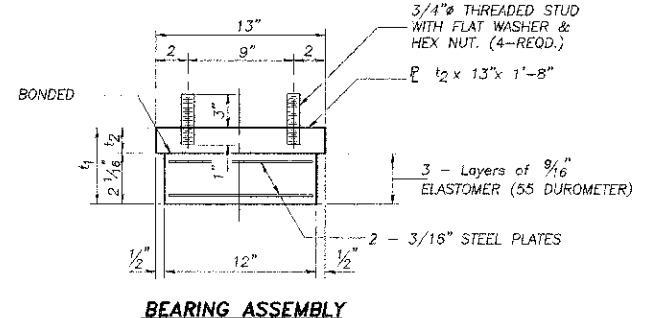
TYPE I ELASTOMERIC EXPANSION BRG. - WEST ABUT.
(5 REQUIRED)



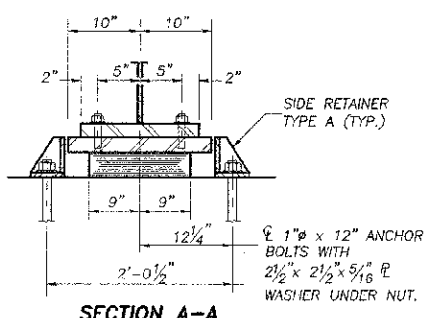
FIXED BEARING ASSEMBLY-WEST PIER
(QUANTITY INCLUDED IN WEIGHTS OF STRUCTURAL STEEL)



ELEVATION



BEARING ASSEMBLY
Note: Shim plates shall not be placed under Bearing Assembly.



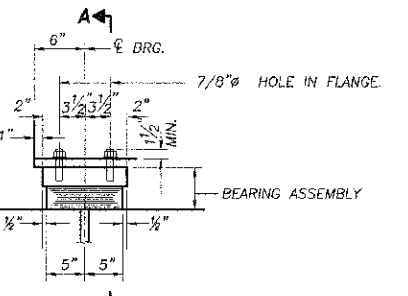
SECTION A-A

TYPE I ELASTOMERIC EXPANSION BRG. - EAST PIER
(5 REQUIRED)

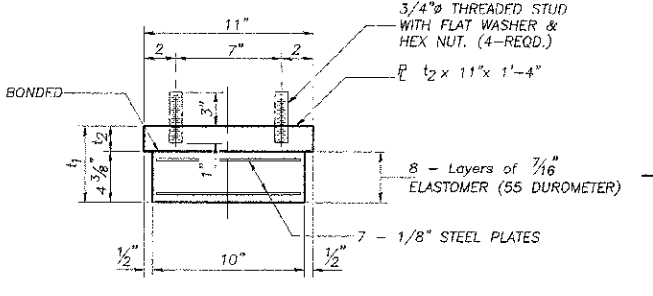
BEAM LINE	W. ABUT.		W. PIER		E. PIER		E. ABUT.	
	t ₁ *	t ₂	t ₃ *	t ₁ *	t ₂	t ₁ *	t ₂	
① NORTH	4"	1 3/4"	3 3/8"	4 9/16"	2 1/2"	6 1/8"	1 3/4"	
②	4"	1 3/4"	3 3/8"	4 9/16"	2 1/2"	6 1/8"	1 3/4"	
③	4"	1 3/4"	3 3/8"	4 9/16"	2 1/2"	6 1/8"	1 3/4"	
④	4"	1 3/4"	3 3/8"	4 9/16"	2 1/2"	6 1/8"	1 3/4"	
⑤ SOUTH	4"	1 3/4"	3 3/8"	4 9/16"	2 1/2"	6 1/8"	1 3/4"	

* THICKNESS MAY BE MADE UP OF 2" MINIMUM PLATES FULL PERIMETER SHOP WELD ON ALL PLATES

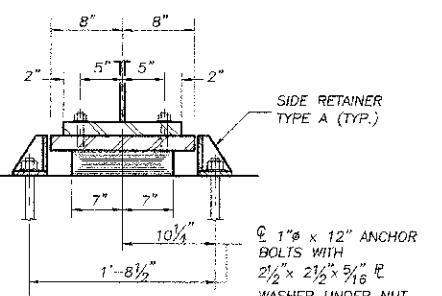
DESIGNED:	RLR
DRAWN:	BDS
CHECKED:	
DATE:	



ELEVATION



BEARING ASSEMBLY
Note: Shim plates shall not be placed under Bearing Assembly.



SECTION A-A

TYPE I ELASTOMERIC EXPANSION BRG. - EAST ABUT.
(5 REQUIRED)

BILL OF MATERIAL		
ITEM	UNIT	TOTAL
Elastomeric Bearing Assembly Type I	EACH	15

BEARING DETAILS
SECTION 08-18121-00-BR
BASE LINE ROAD BRIDGE
DEKALB COUNTY
SN 019-4500

NO.	DATE	REVISIONS

DESIGNED BY:	RLR
DRAWN BY:	BDS
CHECKED BY:	
DATE:	

wendler
GROUNDING SOLUTIONS
engineers · surveyors · scientists
www.wendler.com
1800.452.6242

BEARING DETAILS
OF
BASE LINE ROAD BRIDGE PROJECT
FOR
DEKALB COUNTY HIGHWAY

SHEET TITLE
BEARING

JOB NUMBER
2080382

DATE
12/14/2012

SHEET NO.

10 of 18