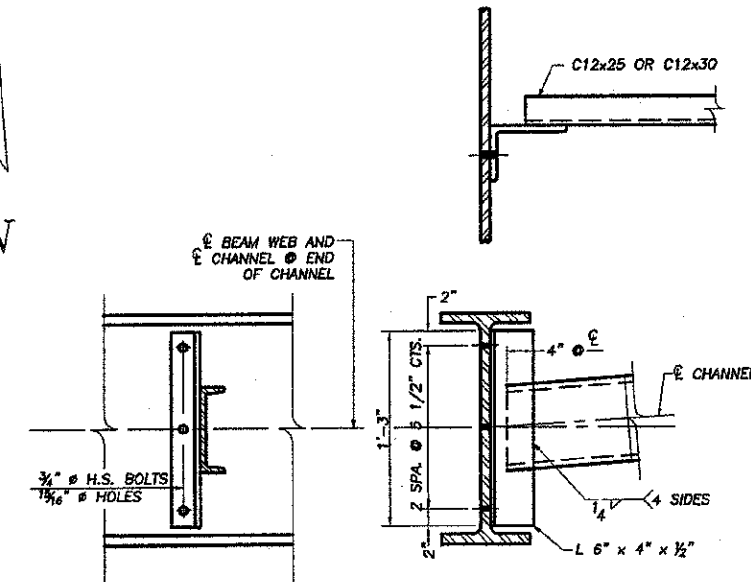
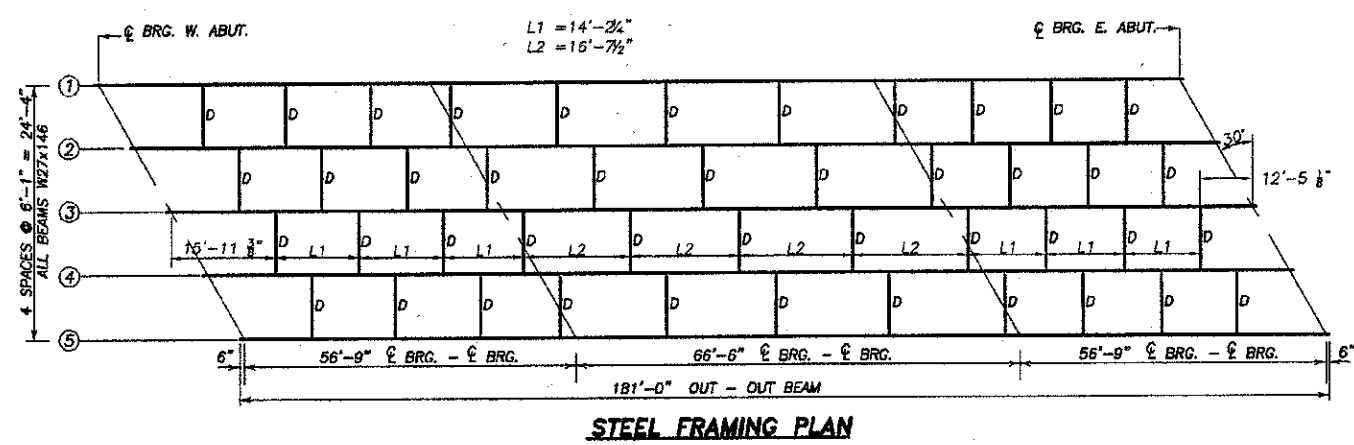
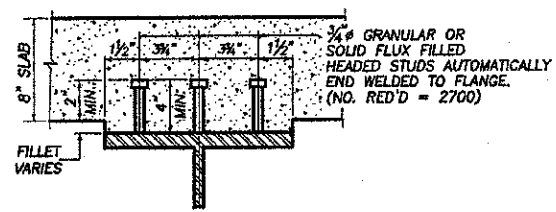
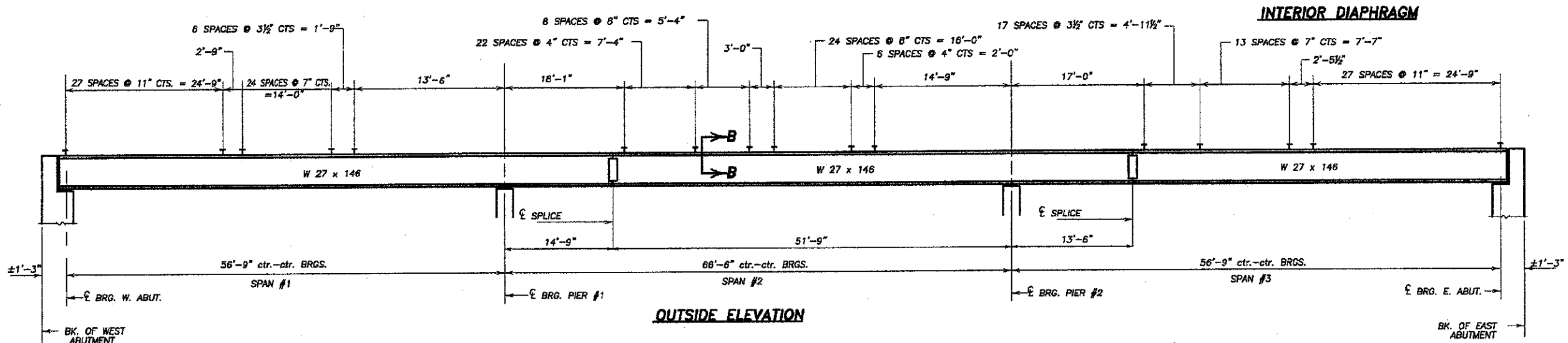


W.P. NO.	61	SEC.	DEKALB	COUNTY	TOTAL SHEETS	18	SHEET NO.	11
ILLINOIS PROJECT BROS-0037(051)								
* 08-18121-00-BR								
CONTRACT NO. 87457								



NOTE: TWO HARDENED WASHERS REQUIRED FOR EACH SET OF OVERIZED HOLES.

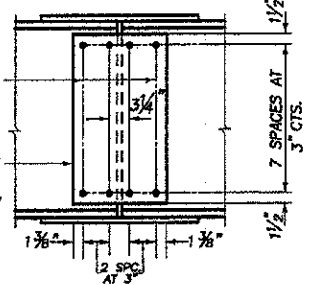
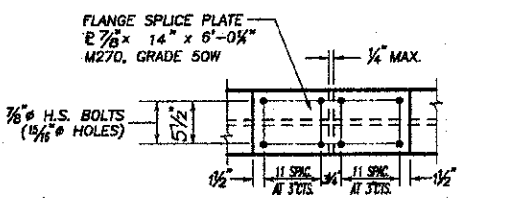


SECTION B-B
PROPOSED TOP OF BEAM ELEVATIONS *

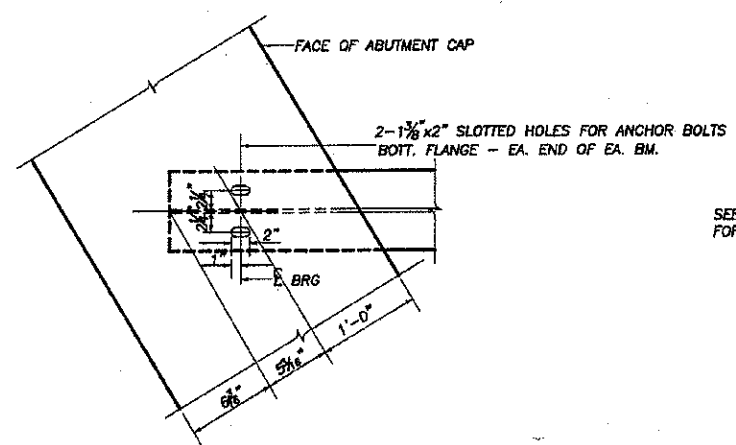
LOCATION	BEAM No.	1	2	3	4	5
☉ BRG. W. ABUT.	807.67	807.77	807.87	807.77	807.67	
☉ BRG. W. PIER (#1)	807.67	807.77	807.87	807.77	807.67	
☉ BRG. E. PIER (#2)	807.67	807.77	807.87	807.77	807.67	
☉ BRG. E. ABUT.	807.67	807.77	807.87	807.77	807.67	

* ALLOW FOR 1/8" POSITIVE FILLET

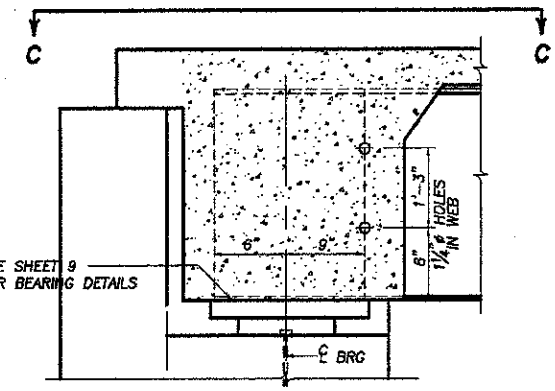
DESIGNED:	RLR
DRAWN:	BDS
CHECKED:	
DATE:	



DETAIL OF SPLICE
(ALL SPLICE PLATES N.T.R.)



DETAIL C-C



SECTION AT ABUT.
(ALONG BEAM ☉)

STRUCTURAL STEEL DETAILS
SECTION 08-18121-00-BR
BASE LINE ROAD
DEKALB COUNTY
SN 019-4500

SCALE: 1" = 12'

REVISIONS

NO.	DATE	REVISION

DESIGNED BY: RLR
DRAWN BY: BDS
CHECKED BY:
DATE:
WORKING:
PROJECT:
SCALE:
SHEET NO.:
TOTAL SHEETS:
JOB NO.:
DATE:
SHEET NO.:
11 of 18

wendler
GROUNDING SOLUTIONS
ENGINEERS SURVEYORS SCIENTISTS
www.wendler.com ph: 815.283.2261
Illinois Professional Design Firm No. 184-000848

STRUCTURAL STEEL DETAILS
OF
BASE LINE ROAD BRIDGE PROJECT
FOR
DEKALB COUNTY HIGHWAY

SHEET TITLE
STEEL DETAILS

JOB NUMBER
2080382

DATE
2/6/2013

SHEET NO.
11 of 18