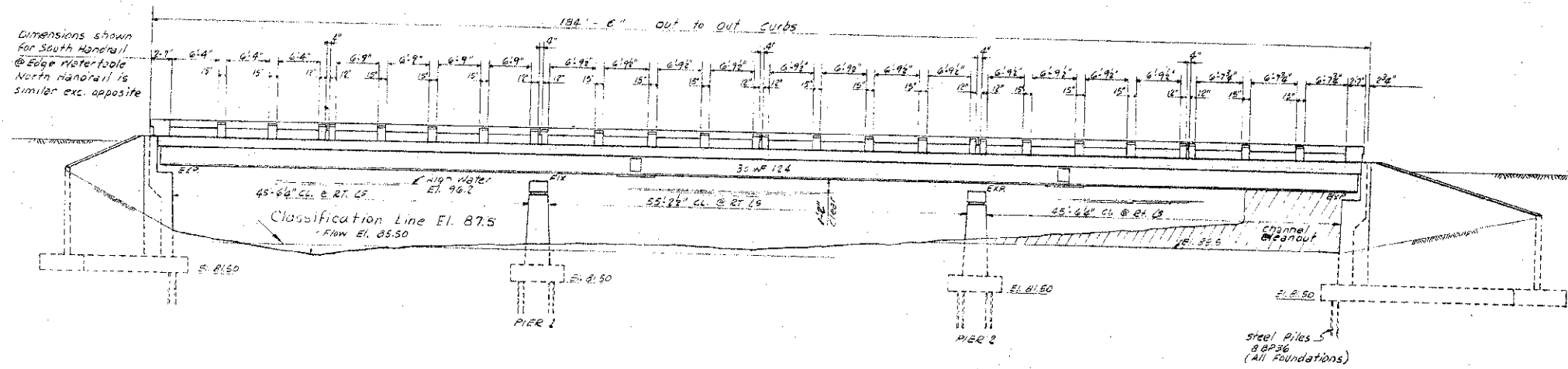
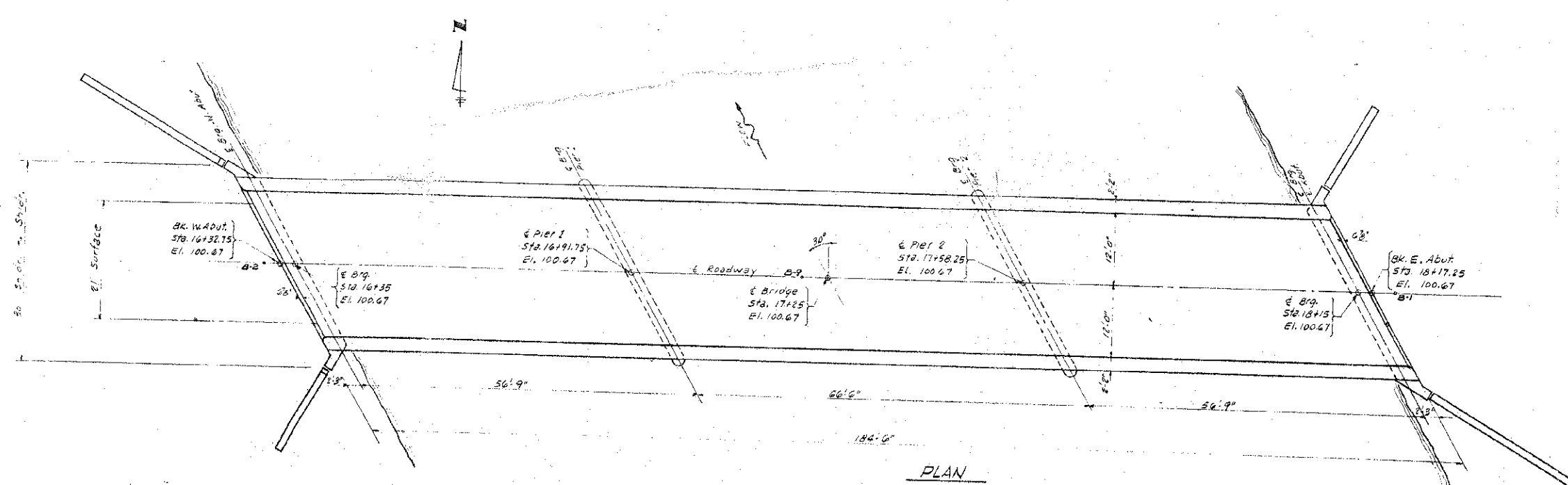


C.M. Spike in Telephone Pole
 48' Lt. Sta. 1918 El. 96.45
 EXIST. STRUCT: 2 span thru steel truss
 on conc. filled steel cession piers
 and abutments (sheet steel backing)
 12' Plank Roadway.
 To be Removed by Contractor
 SALVAGE: None

CONTRACT 87467



ELEVATION



PLAN

STRESS TABLE

	MAX. MOMENTS		MAX. REACTIONS	
	0.4 Sp. 1	Pier	0.5 Sp. 2	Abut. Pier
DL	177.0	287.0	129.1	16.4
LL	246.6	218.0	238.2	23.8
IMP.	67.9	58.1	62.8	6.5
TOTAL	491.5	563.1	430.1	46.7

DESIGN STRESSES

f_c (Superstructure) = 1400 P.S.I.
 f_c (Substructure) = 1000 P.S.I.
 f_s (Reinforcement) = 20000 P.S.I.
 f_s (Structural Steel) = 20000 P.S.I.
 $n = 10$

WATERWAY INFORMATION

Drainage Area = 147360 A.
 Character Level, Cultivated
 Present Opening = 2100 S.F.
 Required Opening (13 yr. Flood) = 1300 S.F.
 Proposed Opening = 1317 S.F.

BASE LINE BRIDGE
 BUILT 1905 BY
 KINGSTON ROAD DISTRICT
 SCYAMORE ROAD DISTRICT
 DEKALB COUNTY
 LOADING HS15

LETTERING FOR NAMEPLATE
 REFER TO STD. 2113-1

GENERAL NOTES

course Aggregate to be used in handrails and end-pasts must be absolutely free of chert, flint, limonite, lignite, and soft sandstone. The concrete floor slab shall be finished in accordance with Art. 51.19 of the Standard Specifications.

The handrail concrete in posts and rail shall be poured in separate operations.

All reinforcement bars shall be lapped 20 bar diameters unless otherwise shown.

All structural steel shall comply with specification for structural steel, A.S.T.M. Designation A-36.

All rockers, bolsters, bearing plates, lead plates, pintles and Anchor bolts shall be fabricated and set in accordance with Art. 51.15 of the Std. Specs., and are included in the quantity of structural steel.

Rivets $\frac{3}{4}$ " Open Holes $\frac{1}{16}$ " unless noted.

Anchor bolts shall be set before riveting diaphragms over supports.

The exposed surfaces of the Armor Angle shall be given two shop coats of red lead paint. Contact surfaces shall be given one shop coat of red lead paint. Anchor studs shall not be painted. Armor Angles are included in quantity of structural steel.

Except as otherwise provided, all structural steel shall receive one shop coat of red lead paint and two field coats of Aluminum paint. See Arts. 56.1 to 56.5 of the Std. Specs.

All paint shall be furnished and applied by the Contractor.

The cost of Class A and Class B Excavation for Structures shall be included in the Contract unit price per Cu.Yd. of Class X Concrete, and no additional compensation will be allowed.

The backs of Abutments shall be waterproofed from top of footing to ground surface in accordance with Art. 51.21 of the Standard Specifications.

The Contractor shall drive 4 Test Piles in permanent locations as directed by the Engineer before ordering the remainder of piles.

TOTAL BILL OF MATERIAL - BRIDGE

ITEM	SUPER	SUB.	TOTAL
Class X Concrete	Cu.Yds. 134.4	245.4	379.8
Class A Concrete	Cu.Yds.	117.4	117.4
Handrail Concrete	Cu.Yds.	13.3	13.3
Reinforcement Bars	Lbs. 38530	29300	67830
Furn. and Erect. Structural Steel	Lbs. 136050		136050
Removal of Existing Structures	Each		
Name Plates	Each	1	1
Furnishing Steel Piles (8 BP 36)	Lin. Ft.	3260	3260
Driving Steel Piles	Lin. Ft.	3260	3260
Test Piles (8 BP 36)	Each	4	4

EXISTING BRIDGE PLANS
 FOR INFORMATION ONLY

PROJECT NO. 3
 KINGSTON SCYAMORE ROAD DISTRICTS
 DEKALB COUNTY
 GENERAL PLAN AND ELEVATION

DESIGNED BY	PLANS PREPARED BY	REVISIONS
D.E.H.	S. W. KHETSCH AND ASSOCIATES	
DATE APRIL 1965		
TRACED BY		
D.E.H.		
DATE MAY 1965		
CHECKED BY		
M.P.W.		
DATE MAY 1965		
APPROVED BY		

LOADING HS15-44