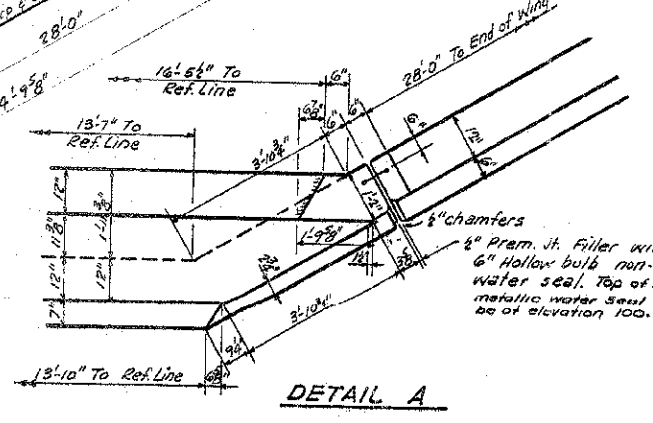
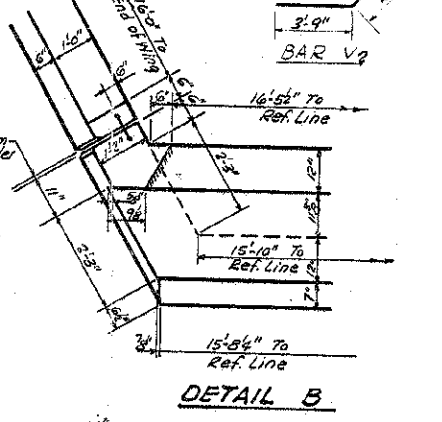
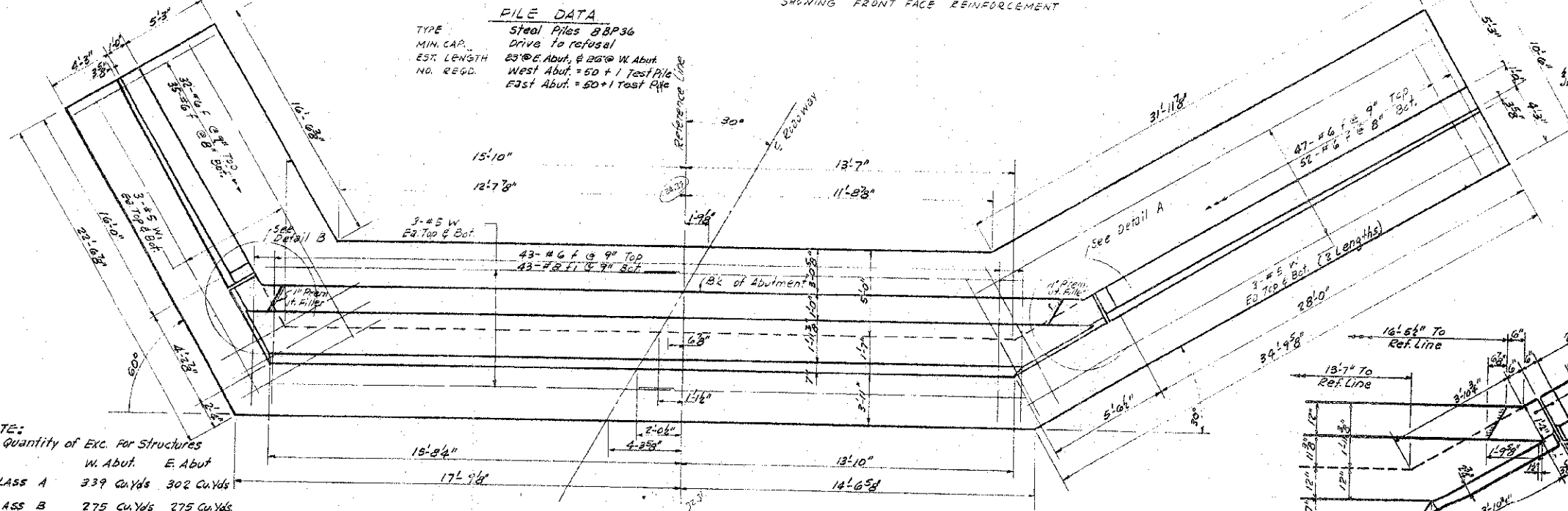


PILE DATA

TYPE	Steel Piles 8BP36
MIN. CAP.	Drive to refusal
EST. LENGTH	63' @ E. Abut. & 20' @ W. Abut.
NO. REQD.	West Abut. = 50 + 1 Test Pile East Abut. = 50 + 1 Test Pile



BILL OF MATERIAL - 2 ABUTS.

BAR NO.	NO.	SIZE	LENGTH	SHAPE	
1	58	#7	7'0"		
2	60	#6	7'3"		
3	68	#4	8'6"		
4	18	#6	11'9"		
5	88	#5	5'6"		
6	88	#6	6'6"		
7	22	#4	8'10"		
8	30	#4	7'11"		
9	90	#4	5'4"		
10	22	#4	3'7"		
11	60	#4	5'0"		
12	18	#4	16'9"		
13	6	#4	14'3"		
14	24	#4	11'9"		
h	16	#4	15'0"		
h1	14	#4	23'0"		
h2	14	#4	23'0"		
h3	34	#4	5'0"		
h4	34	#4	5'0"		
h5	24	#4	17'3"		
h6	52	#4	12'0"		
h7	30	#5	23'2"		
h8	18	#4	16'2"		
n	48	#8	6'10"		
n1	48	#8	6'10"		
n2	86	#7	4'7"		
n3	16	#8	10'2"		
n4	48	#5	16'6"		
n5	12	#5	23'6"		
Concrete				Cu Yds	205.4
Reinforcement Bars				Lbs.	23370
Furnishing Steel Piles (8BP36)				Lin. Ft.	2450
Driving Steel Piles				Lin. Ft.	2450
Test Piles (8BP36)				Each	2

EXISTING BRIDGE PLANS FOR INFORMATION ONLY

ABUTMENT DETAILS
PROJECT NO. 3
KINGSTON-SYCAMORE ROAD DISTRICTS
DEKALB COUNTY

NOTE: Est. Quantity of Exc. For Structures

	W. Abut.	E. Abut.
CLASS A	339 Cu Yds	302 Cu Yds
CLASS B	275 Cu Yds	275 Cu Yds

NOTE: See Pier plan for Spacing and location of anchor bolts for bearing assemblies