

RTE.	SECTION	COUNTY	TOTAL SHEETS	SHEET NO.
TR 109	07-03126-00-BR	BUREAU	61	1
FED. ROAD DIST. NO. 7	ILLINOIS	CONTRACT NO. 87528		

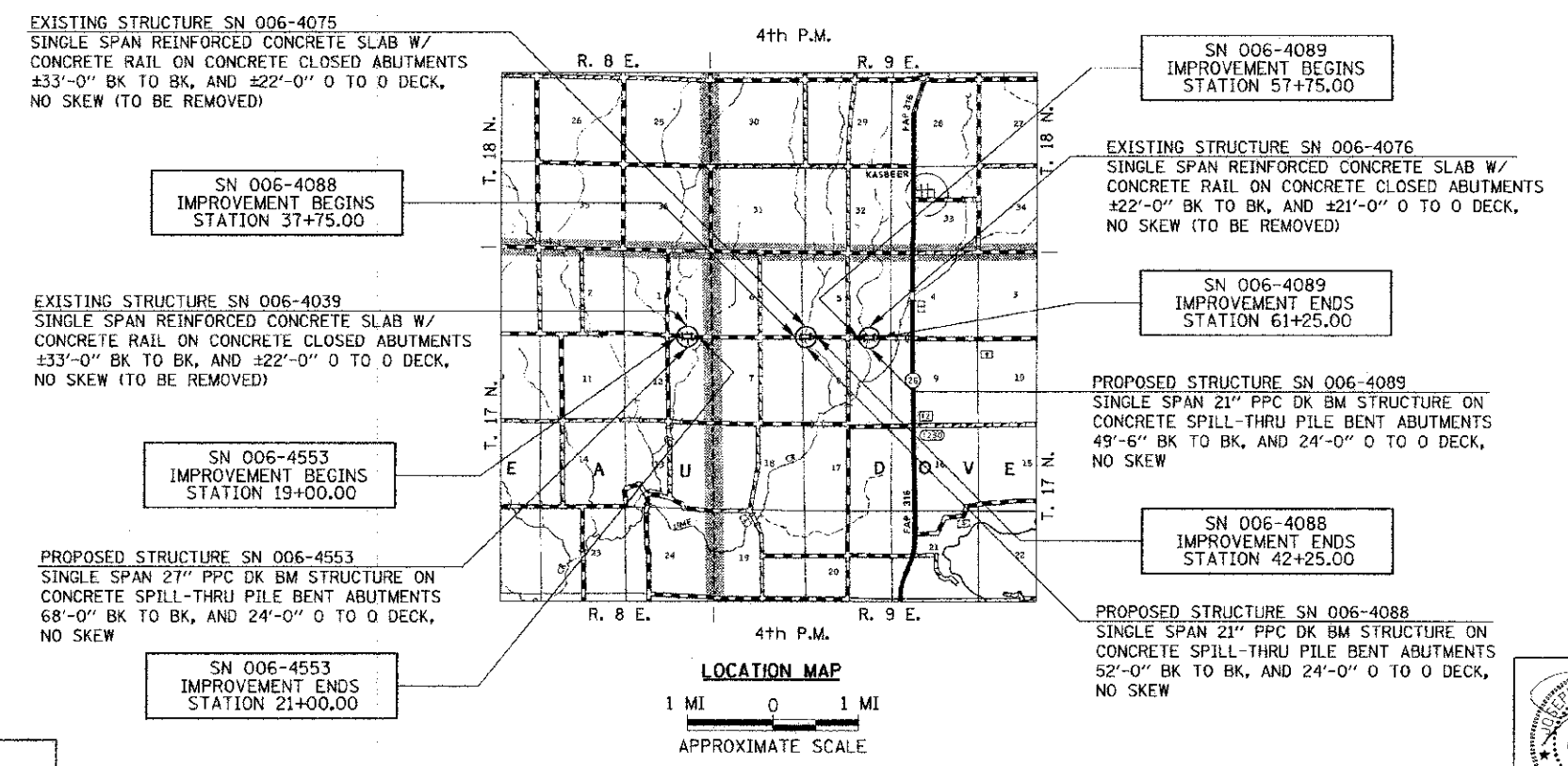
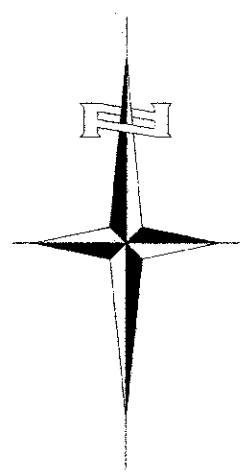
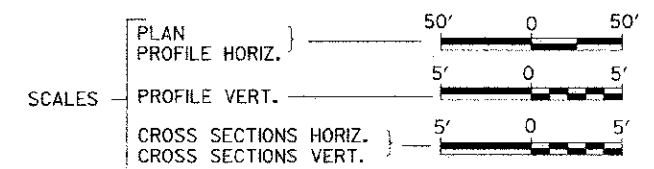
INDEX OF SHEETS

SHEET NO.	DESCRIPTION
1.	COVER SHEET
2.	GENERAL NOTES, DETAILS, TYPICAL SECTIONS
3.	SUMMARY OF QUANTITIES, SCHEDULES OF QUANTITIES
4.-7.	TRAFFIC CONTROL PLAN SHEETS
8.-10.	EROSION CONTROL PLAN SHEETS
11.-13.	PLAN AND PROFILE SHEETS
14.-24.	STRUCTURE PLANS SN 006-4553
25.-35.	STRUCTURE PLANS SN 006-4088
36.-46.	STRUCTURE PLANS SN 006-4089
47.-61.	CROSS SECTIONS

STATE OF ILLINOIS
DEPARTMENT OF TRANSPORTATION
PLANS FOR PROPOSED
HIGHWAY BRIDGE PROGRAM
BUREAU COUNTY
BUREAU & DOVER ROAD DISTRICTS
SECTION 07-03126-00-BR
TOWNSHIP ROAD 109 OVER WEST BUREAU CREEK
TOWNSHIP ROAD 109 OVER LIME CREEK TRIBUTARIES
PROJECT NO. BROS-0011(087)
JOB NUMBER C-93-089-12

REQUIRED HIGHWAY STANDARDS

000001-06
280001-07
515001-03
542401-01
635006-03
701901-02
BLR 21-9



UTILITY COMPANIES

FRONTIER COMMUNICATIONS
ROSEVILLE, ILLINOIS

COMMONWEALTH EDISON CO.
ROCKFORD, ILLINOIS

J.U.L.I.E.
JOINT UTILITY LOCATION INFORMATION FOR EXCAVATION
 1-800-892-0123
 OR 811

BUREAU & DOVER ROAD DISTRICTS
CONTRACT NO. 87528

NET LENGTH OF PROJECT = 1,000.00 FEET = 0.189 MILES
 DESIGN CLASSIFICATION: LOCAL ROAD (NON-URBAN)
 DESIGN ADT: 170 (13)
 DESIGN SPEED: 30 MPH

Hutchison Engineering, Inc.
 JACKSONVILLE-SHOREWOOD-PEORIA

2012 JOB#3156, 3184 & 3185

REGISTERED PROFESSIONAL ENGINEER OF ILLINOIS
 58333
 2/21/2008
Li Eng. 11/3/2008
 SIGNATURE
 ENGINEERS SEAL

PLANS DESIGNED IN ACCORDANCE WITH BUREAU OF LOCAL ROADS AND STREETS MANUAL GUIDELINES FOR TWO LANE RURAL LOCAL ROADS - RECONSTRUCTION

APPROVED Jan 3 2013
D. J. ...
 BUREAU ROAD DISTRICT
 HIGHWAY COMMISSIONER

APPROVED Jan 3 2013
...
 DOVER ROAD DISTRICT
 HIGHWAY COMMISSIONER

APPROVED Jan 3 2013
John C. ...
 BUREAU COUNTY ENGINEER

PASSED 1-3 2013
Donald R. ...
 LOCAL ROADS & STREETS ENGINEER

Released For Bid Based on Limited Review 1-3 2013
Paul ...
 DEPUTY DIRECTOR OF HIGHWAYS,
 REGION TWO ENGINEER

STATE OF ILLINOIS
 DEPARTMENT OF TRANSPORTATION

3156E001