





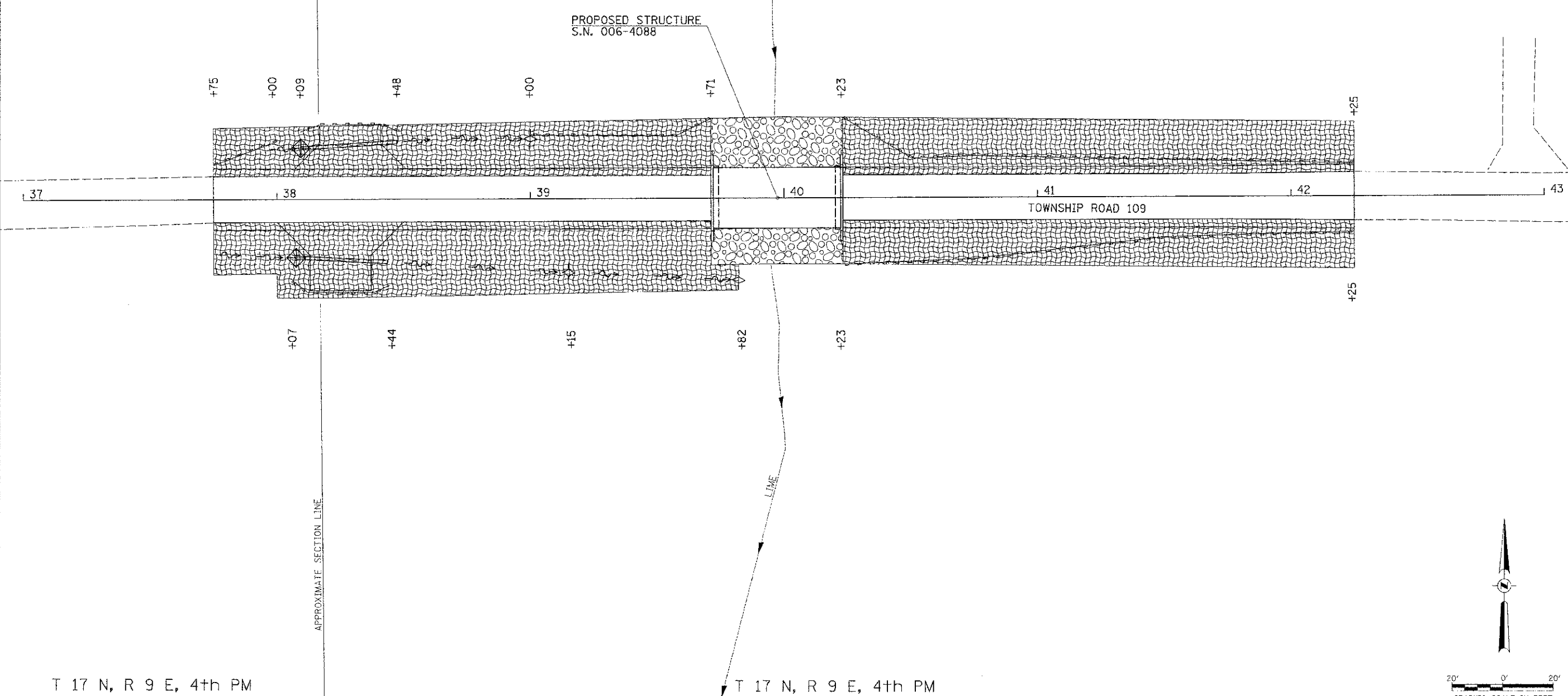


T 17 N, R 9 E, 4th PM
SECTION 6

T 17 N, R 9 E, 4th PM
SECTION 5

LEGEND

-  PERIMETER EROSION BARRIER
-  TEMPORARY DITCH CHECK
-  INLET & PIPE PROTECTION
-  SPECIAL DITCH - FLOW LINE AND DIRECTION
-  PROPOSED RIPRAP PLACEMENT
-  EROSION CONTROL BLANKET



T 17 N, R 9 E, 4th PM
SECTION 7

T 17 N, R 9 E, 4th PM
SECTION 8

FILE NAME = V:\Dr\dwg\0194-Bureau\31845801.dwg	USER NAME = jhutchison	DESIGNED -	REVISED -
		DRAWN -	REVISED -
		CHECKED -	REVISED -
		DATE -	REVISED -

**BUREAU COUNTY
TOWNSHIP ROAD 109 OVER
LIME CREEK TRIBUTARY**

**EROSION CONTROL PLAN
SN 006-4088**

SCALE: 1" = 20' SHEET NO. 1 OF 1 SHEETS STA. 37+75.00 TO STA. 42+25.00

RTE.	SECTION	COUNTY	TOTAL SHEETS	SHEET NO.
TR 109	07-03126-00-BR	BUREAU	61	9
FED. ROAD DIST. NO. 7 ILLINOIS			FED. AID PROJECT BROS-0011087	