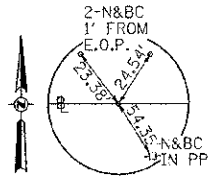


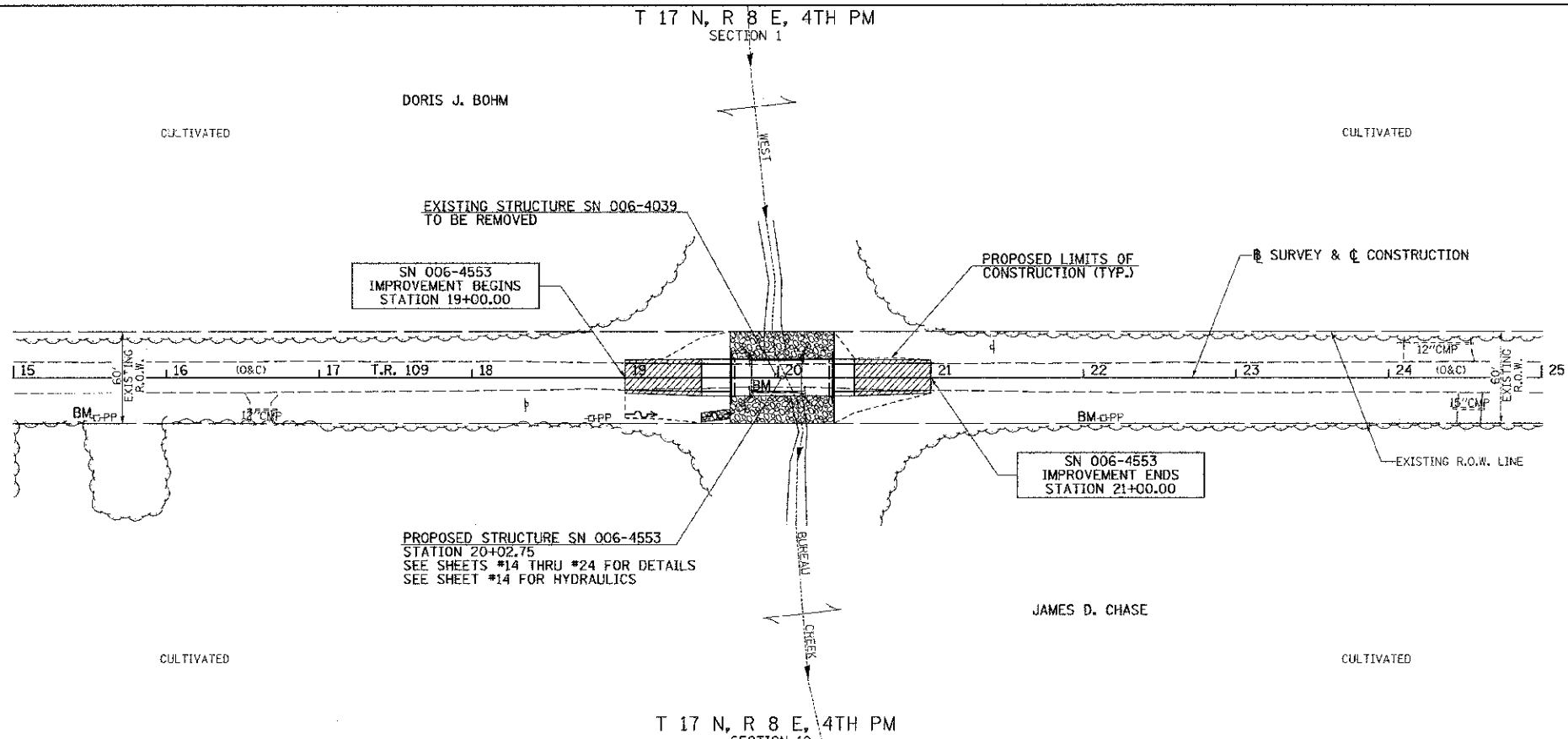
PT STA 14+99.66  
SURVEY SPIKE



PT STA 25+00.46  
SURVEY SPIKE

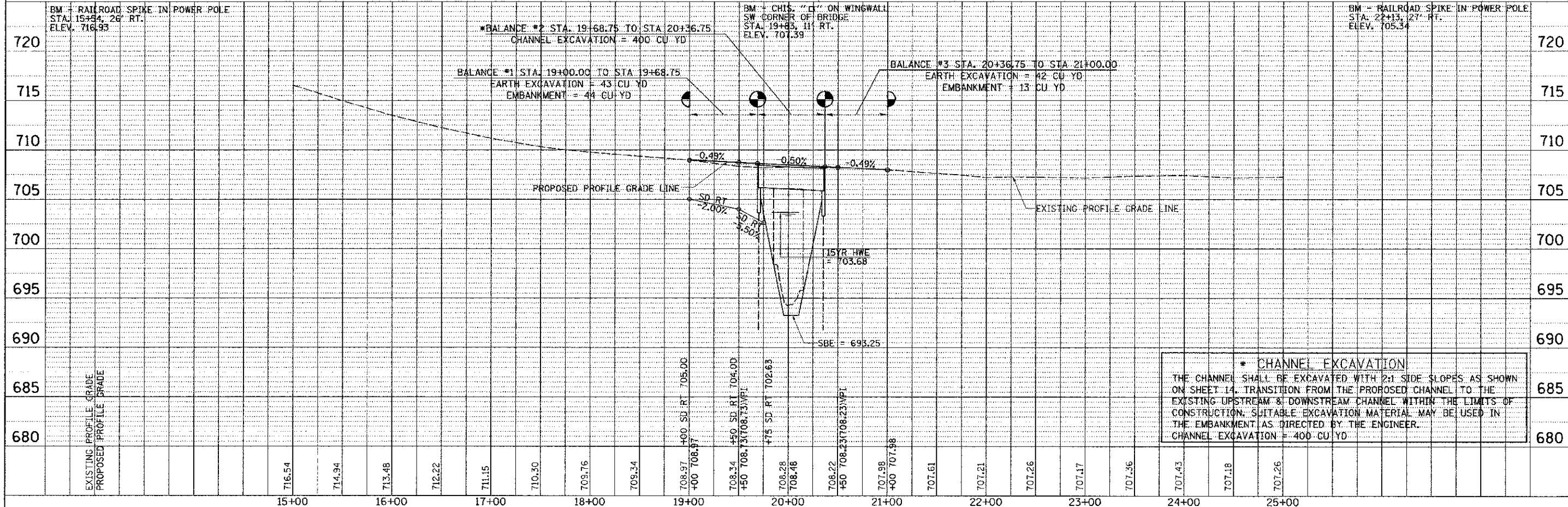
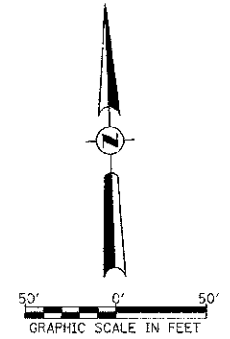
DATE	
BY	
REVISIONS	
NO.	
DATE	
BY	
DESCRIPTION	
DATE	
BY	
DESCRIPTION	

DATE	
BY	
REVISIONS	
NO.	
DATE	
BY	
DESCRIPTION	
DATE	
BY	
DESCRIPTION	



**LEGEND**

- TRANSITION TO OR FROM EXISTING TO PROPOSED TYPICAL PAVEMENT
- PROPOSED RIPRAP PLACEMENT
- SPECIAL DITCH WITH FLOW DIRECTION



**\* CHANNEL EXCAVATION**  
 THE CHANNEL SHALL BE EXCAVATED WITH 2:1 SIDE SLOPES AS SHOWN ON SHEET 14. TRANSITION FROM THE PROPOSED CHANNEL TO THE EXISTING UPSTREAM & DOWNSTREAM CHANNEL WITHIN THE LIMITS OF CONSTRUCTION. SUITABLE EXCAVATION MATERIAL MAY BE USED IN THE EMBANKMENT AS DIRECTED BY THE ENGINEER.  
 CHANNEL EXCAVATION = 400 CU YD

FILE NAME =	USER NAME = cthomas	DESIGNED -	REVISED -	<b>BUREAU COUNTY TOWNSHIP ROAD 109 OVER WEST BUREAU CREEK</b>	<b>PLAN AND PROFILE SN 006-4553</b>		RTE.	SECTION	COUNTY	TOTAL SHEETS	SHEET NO.
V:\Bridges\3156-Bureau\3156.dwg		DRAWN -	REVISED -		TR 109	07-03126-00-BR	BUREAU	61	11		
SHT_PLNPROF		CHECKED -	REVISED -		SCALE: 1"=50'			SHEET 1 OF 1 SHEETS		STA. 19+00.00 TO STA. 21+00.00	
		DATE -	REVISED -		FED. ROAD DIST. NO. 7 [ILLINOIS]		FED. AID PROJECT DROS-0011007		CONTRACT NO. 87528		