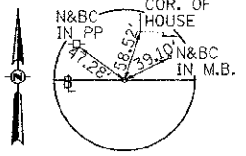


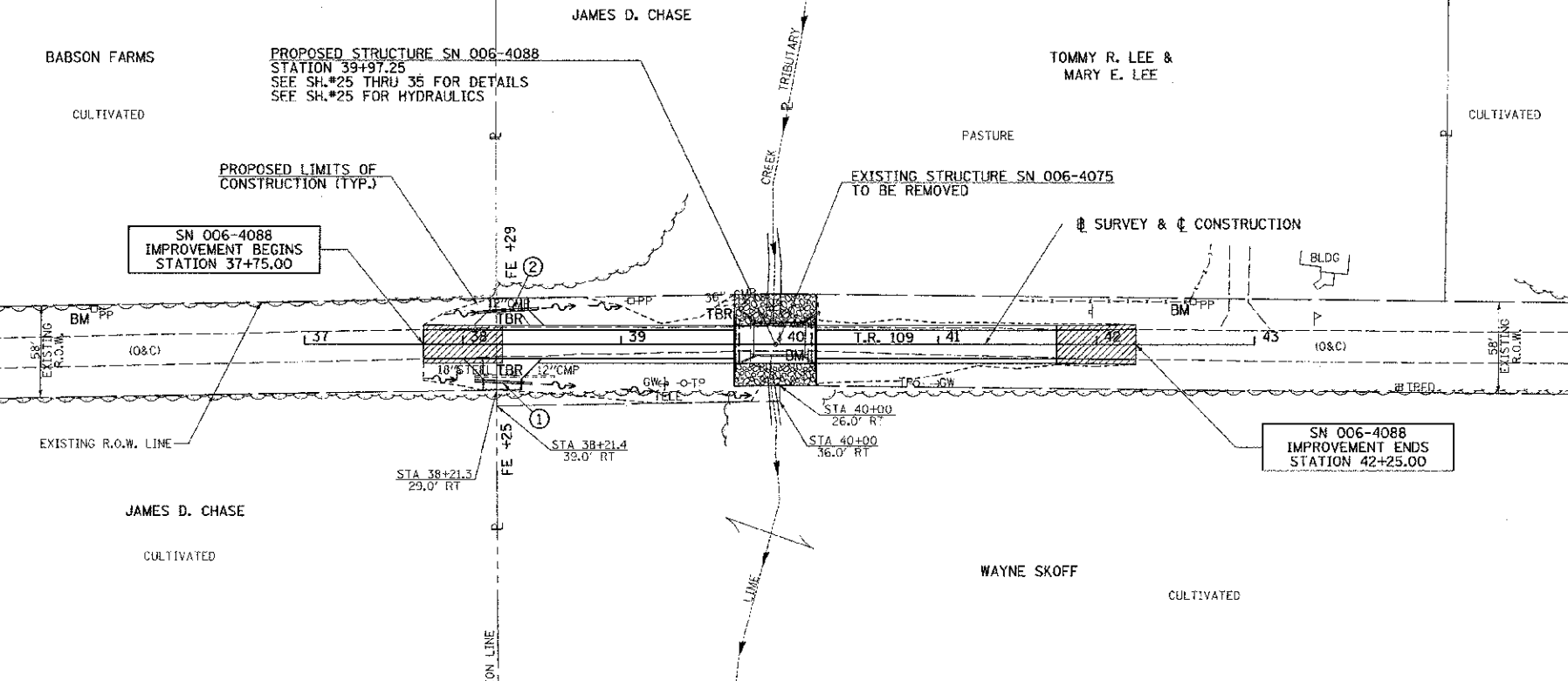
POT STA 37+00.00
SURVEY SPIKE



POT STA 43+00.00
SURVEY SPIKE

T 17 N, R 9 E, 4TH PM
SECTION 6

T 17 N, R 9 E, 4TH PM
SECTION 5



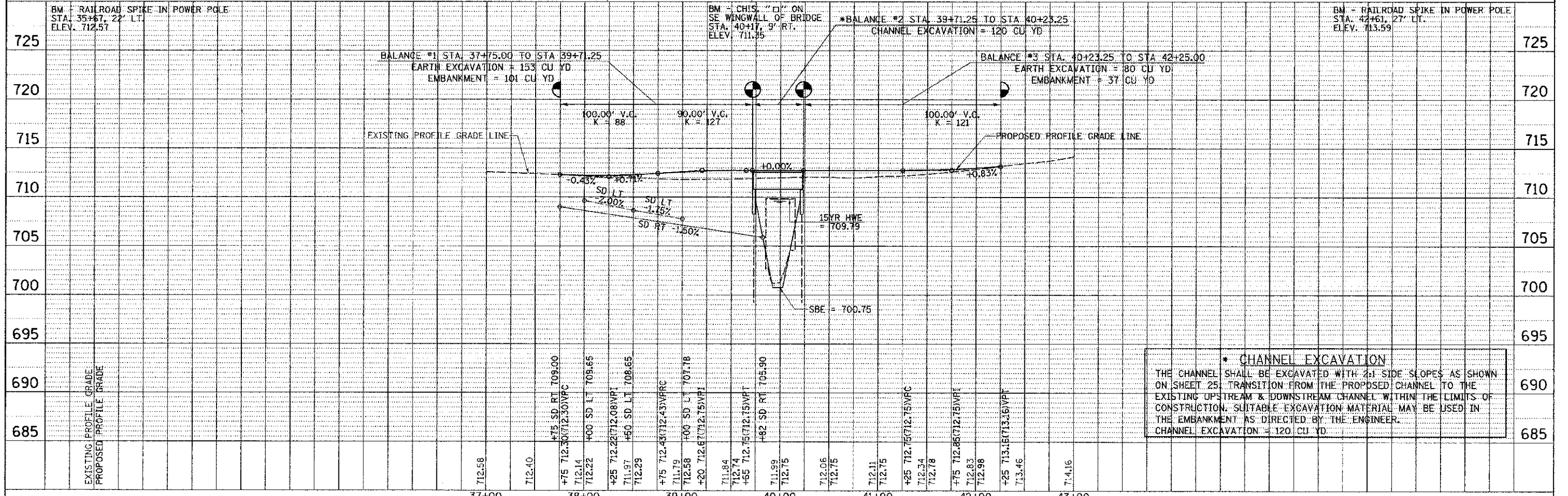
- ① PROPOSED PIPE CULVERT
2 - METAL END SEC., STD. 542401
CLASS D, TYPE 1, 15"x36"
USFL 708.51, STA 38+07.53, 23.0' RT
DSFL 707.97, STA 38+43.49, 24.8' RT
- ② PROPOSED PIPE CULVERT
2 - METAL END SEC., STD. 542401
CLASS D, TYPE 1, 15"x36"
USFL 709.46, STA 38+09.48, 20.2' LT
DSFL 708.70, STA 38+47.40, 22.6' LT

LEGEND

- TRANSITION TO OR FROM EXISTING TO PROPOSED TYPICAL PAVEMENT
- PROPOSED RIPRAP PLACEMENT
- SPECIAL DITCH WITH FLOW DIRECTION

T 17 N, R 9 E, 4TH PM
SECTION 7

T 17 N, R 9 E, 4TH PM
SECTION 8



*** CHANNEL EXCAVATION**
THE CHANNEL SHALL BE EXCAVATED WITH 2:1 SIDE SLOPES AS SHOWN ON SHEET 25. TRANSITION FROM THE PROPOSED CHANNEL TO THE EXISTING UPSTREAM & DOWNSTREAM CHANNEL WITHIN THE LIMITS OF CONSTRUCTION. SUITABLE EXCAVATION MATERIAL MAY BE USED IN THE EMBANKMENT AS DIRECTED BY THE ENGINEER.
CHANNEL EXCAVATION = 120 CU YD.

PLAN	DATE
BY	
CHECKED	
DATE	
NO.	

PROFILE	DATE
BY	
CHECKED	
DATE	
NO.	

FILE NAME = V:\B\C\03104-Bureau\3104P001.dwg	USER NAME = cthomas	DESIGNED -	REVISED -	BUREAU COUNTY TOWNSHIP ROAD 109 OVER LIME CREEK TRIBUTARY	PLAN AND PROFILE SN 006-4088	RTE.	SECTION	COUNTY	TOTAL SHEETS	SHEET NO.	
SHIT_PLNPROF	PLLOT SCALE = 50.0000 / 1" = 50'	DRAWN -	REVISED -			TR 109	07-03126-00-RR	BUREAU	61	12	
PLLOT DATE = 12/21/2012		CHECKED -	REVISED -			SCALE: 1"=50' SHEET 1 OF 1 SHEETS STA. 37+75.00 TO STA. 42+25.00					
		DATE -	REVISED -			CONTRACT NO. 87528					