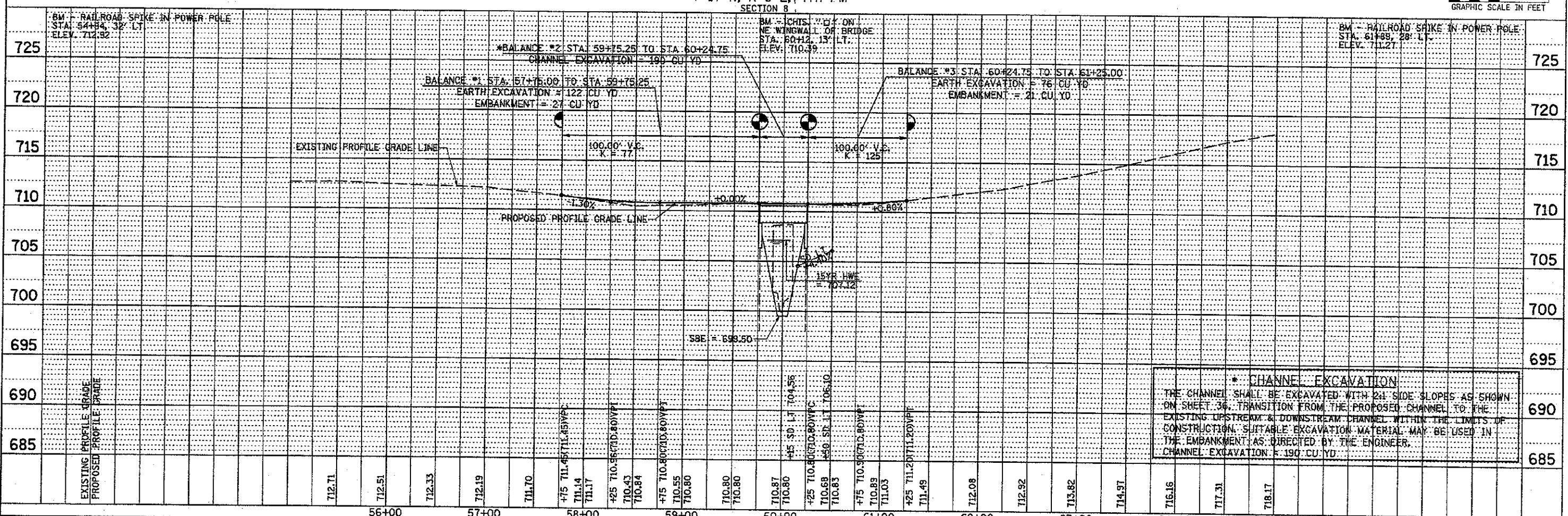


- LEGEND**
- TRANSITION TO OR FROM EXISTING TO PROPOSED TYPICAL PAVEMENT
 - PROPOSED RIPRAP PLACEMENT
 - SPECIAL DITCH WITH FLOW DIRECTION

| | |
|------|------|
| PLAN | DATE |
| BY | |
| NO. | |
| DATE | |
| BY | |
| NO. | |
| DATE | |
| BY | |
| NO. | |
| DATE | |

| | |
|---------|------|
| PROFILE | DATE |
| BY | |
| NO. | |
| DATE | |
| BY | |
| NO. | |
| DATE | |
| BY | |
| NO. | |
| DATE | |



*** CHANNEL EXCAVATION**
 THE CHANNEL SHALL BE EXCAVATED WITH 2:1 SIDE SLOPES AS SHOWN ON SHEET 36. TRANSITION FROM THE PROPOSED CHANNEL TO THE EXISTING UPSTREAM & DOWNSTREAM CHANNEL WITHIN THE LIMITS OF CONSTRUCTION. SUITABLE EXCAVATION MATERIAL MAY BE USED IN THE EMBANKMENT AS DIRECTED BY THE ENGINEER.
 CHANNEL EXCAVATION = 190 CU YD

| | | | | | | | | | | | |
|-----------------------------------|------------------------|------------|-----------|--|---|--------------------------------|----------------|--------------------------------|--------------|-------------------------------|--|
| FILE NAME = | USER NAME = jhutchison | DESIGNED - | REVISED - | BUREAU COUNTY TOWNSHIP ROAD 109 OVER LIME CREEK TRIBUTARY | PLAN AND PROFILE SN 006-4089 | ROUTE | SECTION | COUNTY | TOTAL SHEETS | SHEET NO. | |
| VA\Bridg\3185-Bureau\3185P201.plt | | DRAWN - | REVISED - | | | TR 109 | 07-03126-00-BR | BUREAU | 61 | 13 | |
| SHT_PLNPROF | | CHECKED - | REVISED - | | | CONTRACT NO. 87528 | | | | | |
| | | DATE - | REVISED - | | | FED. ROAD DIST. NO. 7 ILLINOIS | | | | | |
| | | | | SCALE: 1"=50' | | SHEET 1 OF 1 SHEETS | | STA. 57+75.00 TO STA. 61+25.00 | | FED. AID PROJECT BR03-C011087 | |