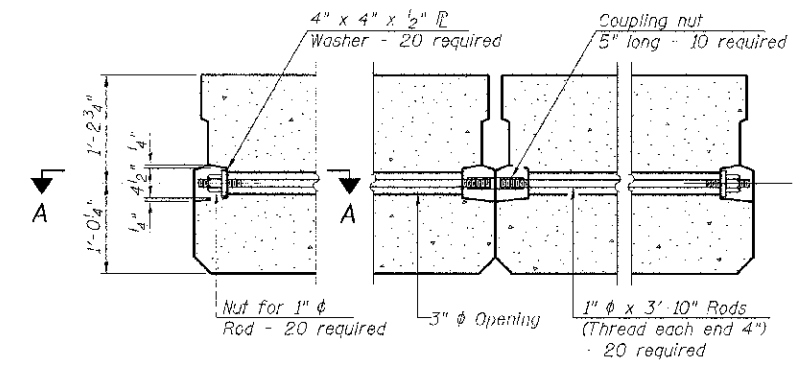
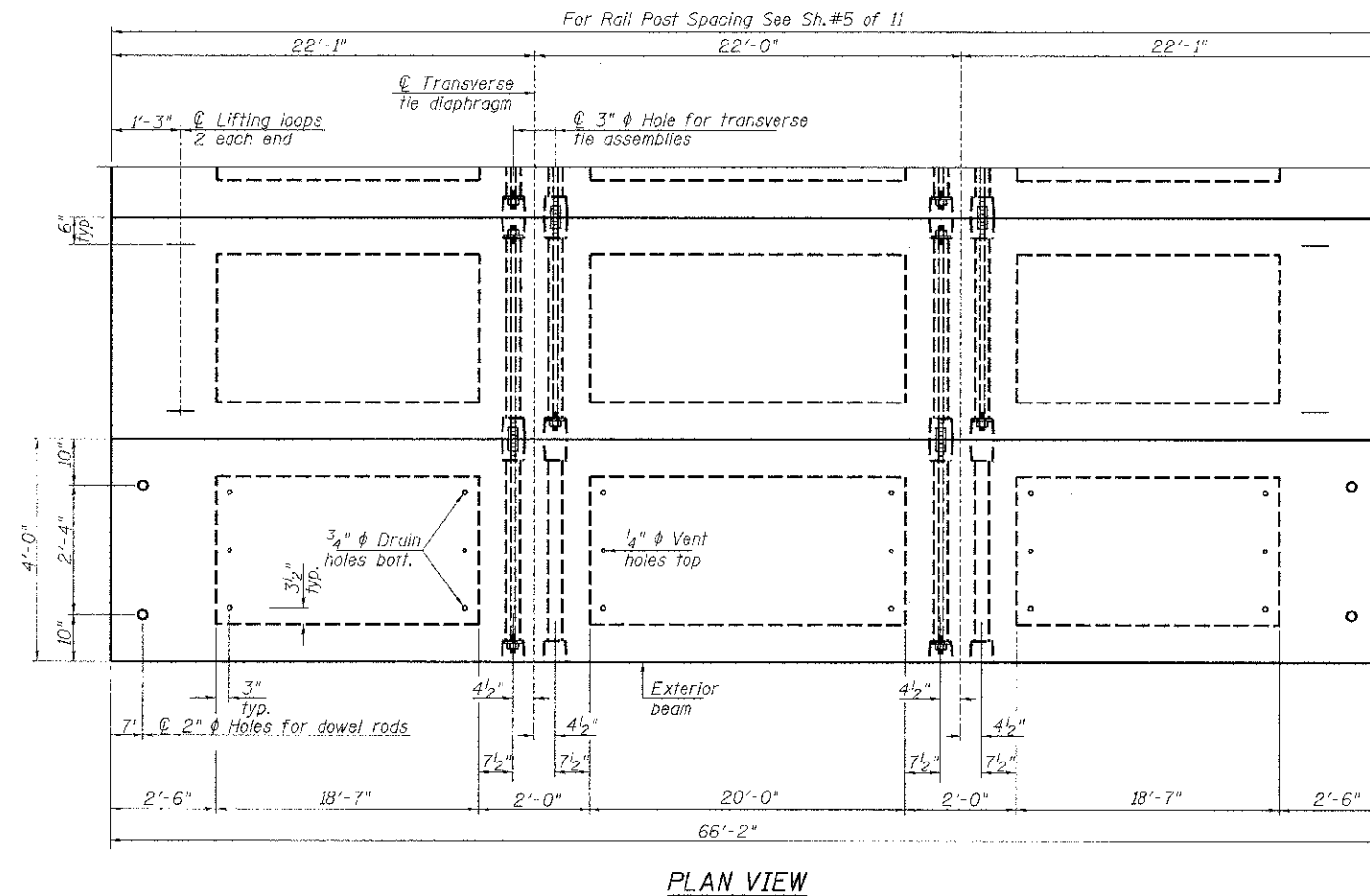


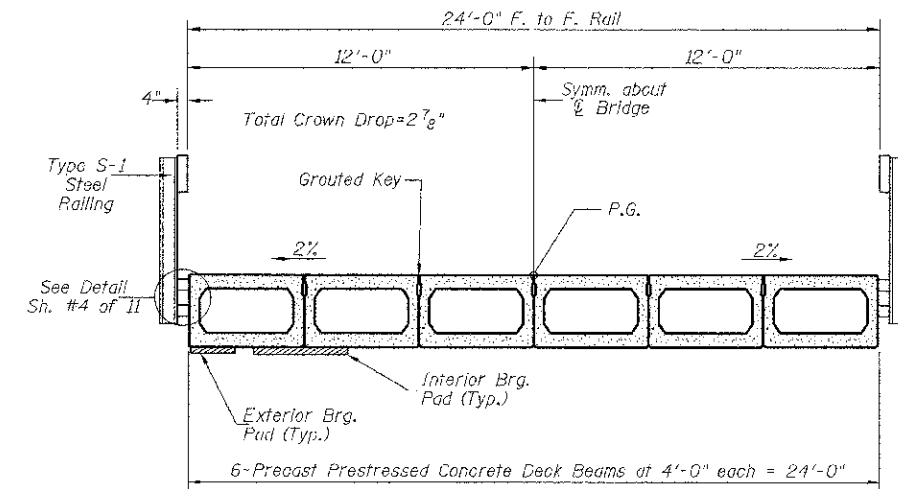
**SECTION A-A**



**TYPICAL TRANSVERSE TIE ASSEMBLY**



**PLAN VIEW**



**CROSS SECTION**

**BILL OF MATERIAL**

ITEM	UNIT	QUANTITY
① Precast Prestressed Concrete Deck Beams (27" Depth)	SQ FT	1,588

② See Special Provisions

Note: Connect beams in pairs with the transverse tie configuration shown.

**NOTES**

- Prestressing steel shall be uncoated high strength, low relaxation 7-wire strand, Grade 270. The nominal diameter shall be 1/2" and the nominal cross-sectional area shall be 0.153 sq. in. The 1" diameter rods in the transverse tie assembly shall be tightened to a snug fit and the threads set. Pockets on exterior faces of bridge shall be filled with grout after transverse tie assembly is in place.
- Reinforcement bars shall conform to ASTM A 706, Grade 60.
- Two 1/8" fabric adjusting shims of the dimensions of the exterior bearing pad shall be provided for each bearing pad location.
- A minimum 2 1/2" diameter lifting pin shall be used to engage the lifting loops during handling.
- Corrosion Inhibitor, per Article 1020.05(b)(12) and 1021.07 of the Standard Specifications, shall be used in the concrete for precast prestressed concrete deck beams.
- Compressive strength of prestressed concrete, f'c, shall be 6000 psi.
- Compressive strength of prestressed concrete at release, f'ci, shall be 5000 psi.

**SUPERSTRUCTURE**  
**BUREAU COUNTY**  
**SECTION 07-03126-00-BR**  
**T.R. 109 OVER WEST BUREAU CREEK**

SHEET NO. 2  11 SHEETS	ROUTE NO.	SECTION	COUNTY	TOTAL SHEETS	SHEET NO.
	TR 109	07-03126-00-BR	BUREAU	61	15
	S.N. 006-4553		CONTRACT NO. 87528		
FED. ROAD DIST. NO. 7		ILLINOIS	FED. AID PROJECT BR05-011(087)		