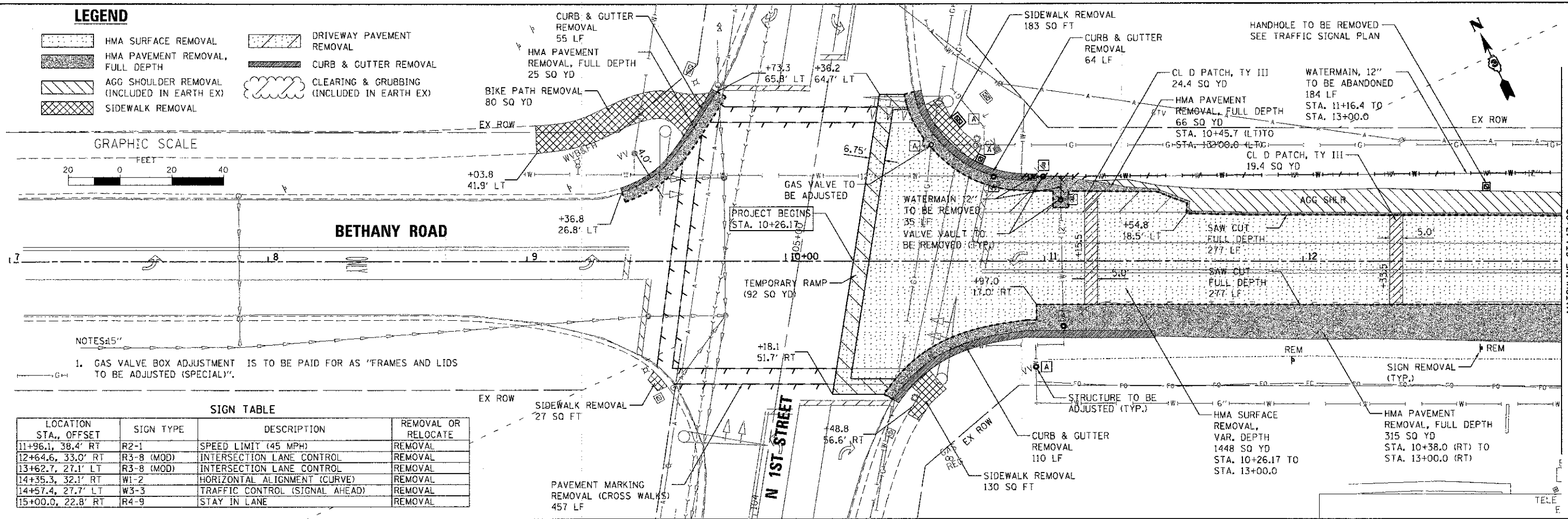
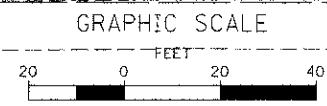
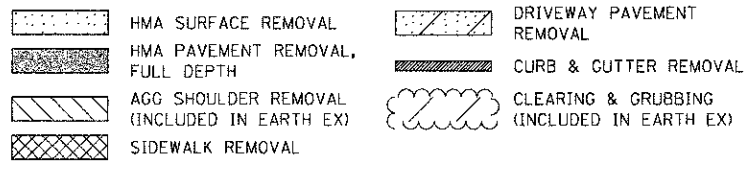


LEGEND



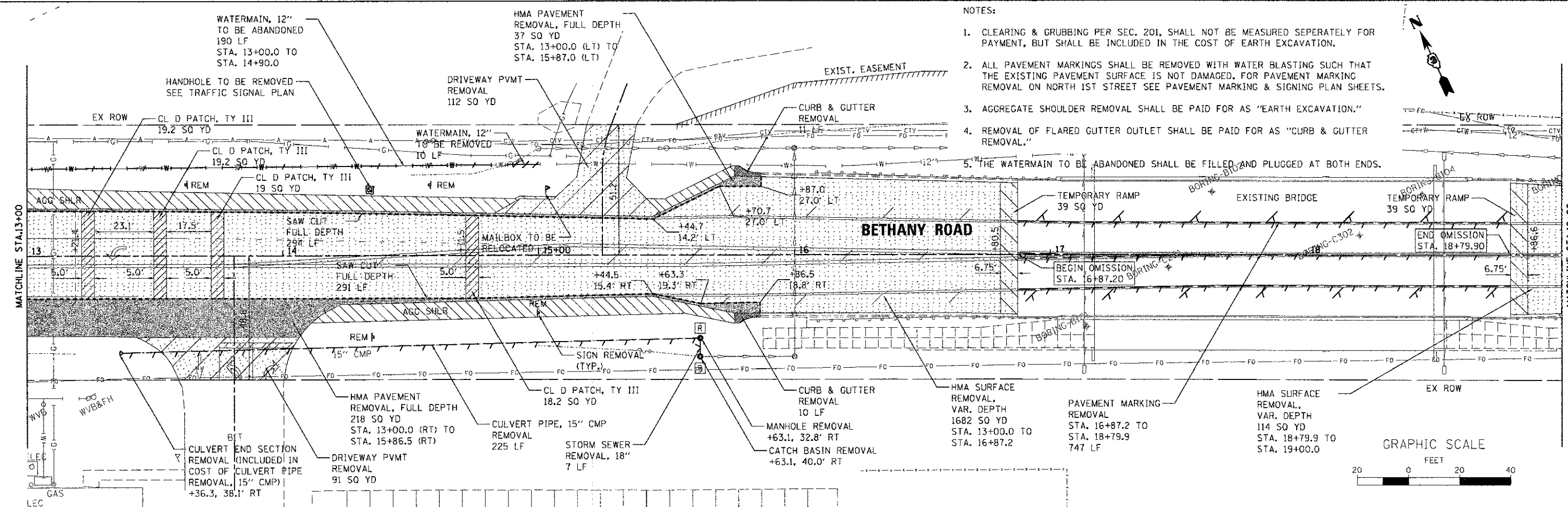
NOTES:
1. GAS VALVE BOX ADJUSTMENT IS TO BE PAID FOR AS "FRAMES AND LIDS TO BE ADJUSTED (SPECIAL)".

SIGN TABLE

LOCATION STA., OFFSET	SIGN TYPE	DESCRIPTION	REMOVAL OR RELOCATE
11+96.1, 38.4' RT	R2-1	SPEED LIMIT (45 MPH)	REMOVAL
12+64.6, 33.0' RT	R3-8 (MOD)	INTERSECTION LANE CONTROL	REMOVAL
13+62.7, 27.1' LT	R3-8 (MOD)	INTERSECTION LANE CONTROL	REMOVAL
14+35.3, 32.1' RT	W1-2	HORIZONTAL ALIGNMENT (CURVE)	REMOVAL
14+57.4, 27.7' LT	W3-3	TRAFFIC CONTROL (SIGNAL AHEAD)	REMOVAL
15+00.0, 22.8' RT	R4-9	STAY IN LANE	REMOVAL

NOTES:

- CLEARING & GRUBBING PER SEC. 201, SHALL NOT BE MEASURED SEPERATELY FOR PAYMENT, BUT SHALL BE INCLUDED IN THE COST OF EARTH EXCAVATION.
- ALL PAVEMENT MARKINGS SHALL BE REMOVED WITH WATER BLASTING SUCH THAT THE EXISTING PAVEMENT SURFACE IS NOT DAMAGED. FOR PAVEMENT MARKING REMOVAL ON NORTH 1ST STREET SEE PAVEMENT MARKING & SIGNING PLAN SHEETS.
- AGGREGATE SHOULDER REMOVAL SHALL BE PAID FOR AS "EARTH EXCAVATION."
- REMOVAL OF FLARED GUTTER OUTLET SHALL BE PAID FOR AS "CURB & GUTTER REMOVAL."
- THE WATERMAIN TO BE ABANDONED SHALL BE FILLED AND PLUGGED AT BOTH ENDS.



FILE NAME = W:\Projects\2012\20120155_Bethany\93\CADD\G:\w1\Drawn\Sh\1\REM_01.dgn

WILLS BURKE KELSEY ASSOCIATES LTD.
115 West Main Street, Suite 201
St. Charles, Illinois 60174

USER NAME = npparr15	DESIGNED - KMA	REVISED -
PLOT SCALE = 1:20	DRAWN - NDP	REVISED -
PLOT DATE = 12/20/2012	CHECKED - DPB	REVISED -
	DATE - 12/21/12	REVISED -

**STATE OF ILLINOIS
DEPARTMENT OF TRANSPORTATION**

EXISTING CONDITIONS AND REMOVAL PLAN
SCALE: 1"=20'
SHEET NO. 1 OF 2 SHEETS
STA. 10+26.17 TO STA. 19+00.00

F.A.U. RTE.	SECTION	COUNTY	TOTAL SHEETS	SHEET NO.
5355	10-00167-01-WR	DEKALB	78	19
CONTRACT NO. 87544				
ILLINOIS FED. AID PROJECT				