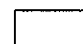



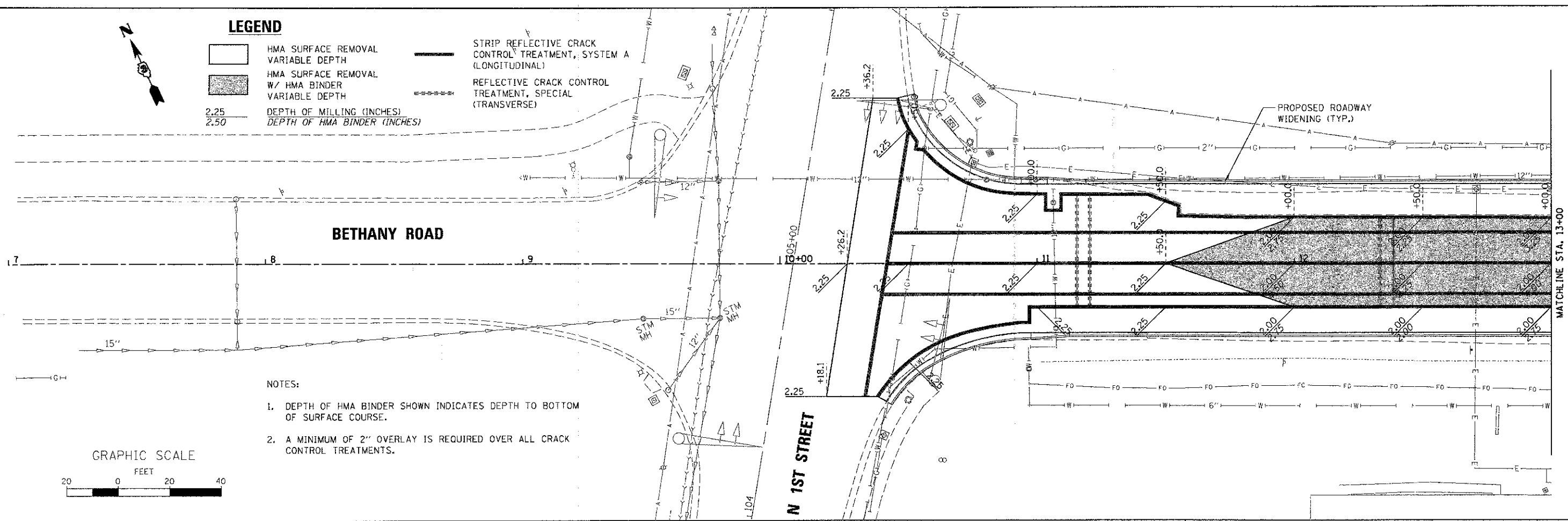




LEGEND

-  HMA SURFACE REMOVAL VARIABLE DEPTH
-  HMA SURFACE REMOVAL W/ HMA BINDER VARIABLE DEPTH
- 2.25 DEPTH OF MILLING (INCHES)
- 2.50 DEPTH OF HMA BINDER (INCHES)

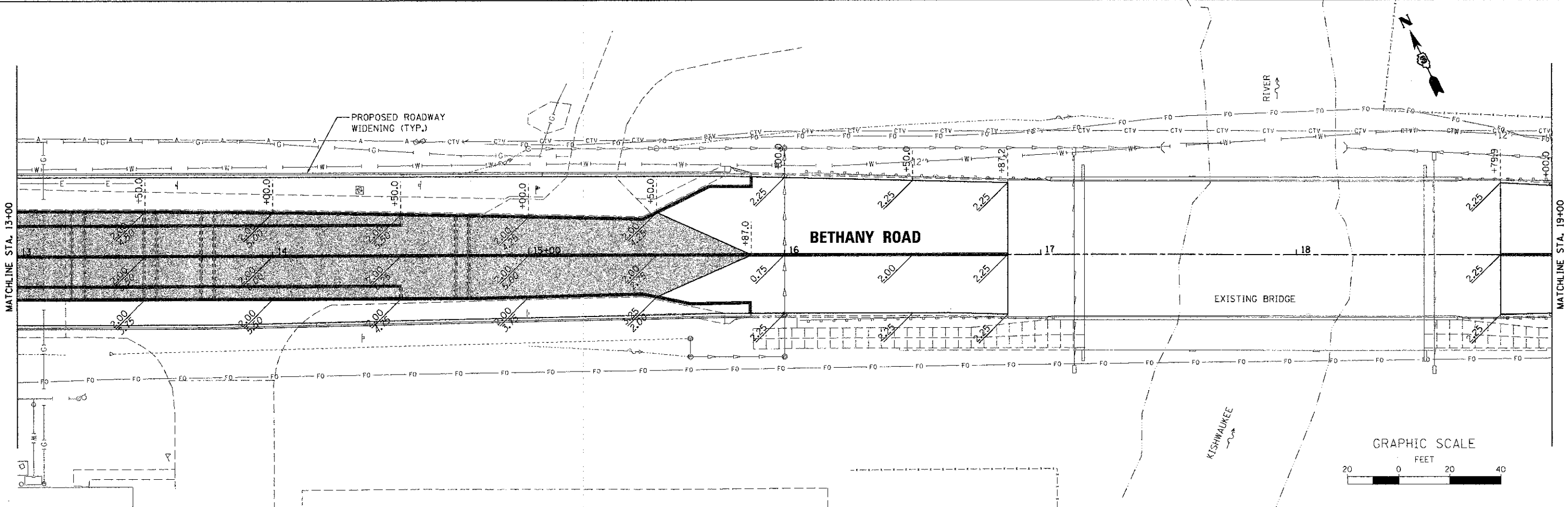
-  STRIP REFLECTIVE CRACK CONTROL TREATMENT, SYSTEM A (LONGITUDINAL)
-  REFLECTIVE CRACK CONTROL TREATMENT, SPECIAL (TRANSVERSE)



NOTES:

1. DEPTH OF HMA BINDER SHOWN INDICATES DEPTH TO BOTTOM OF SURFACE COURSE.
2. A MINIMUM OF 2" OVERLAY IS REQUIRED OVER ALL CRACK CONTROL TREATMENTS.

GRAPHIC SCALE



GRAPHIC SCALE



FILE NAME = W:\Projects\2012\121815_BethanyStg3\CADD\Civil\Drawn_Shts\WILL_01.dgn

WILLS BURKE KELSEY ASSOCIATES LTD.
 110 West Main Street, Suite 201
 St. Charles, Illinois 60174

USER NAME = nparis	DESIGNED - KMA	REVISED -
PL0T SCALE = 1:20	DRAWN - NDP	REVISED -
PL0T DATE = 12/28/2012	CHECKED - DPB	REVISED -
	DATE - 12/21/12	REVISED -

**STATE OF ILLINOIS
 DEPARTMENT OF TRANSPORTATION**

**MILLING DEPTH &
 HMA BINDER DEPTH PLAN**

SCALE: 1"=20' SHEET NO. 1 OF 2 SHEETS STA. 10+26.17 TO STA. 19+00.00

F.A.U. RTE. 5355	SECTION 10-00167-01-WR	COUNTY DEKALB	TOTAL SHEETS 78	SHEET NO. 21
CONTRACT NO. 87544				
ILLINOIS FED. AID PROJECT				