

NOTES:

- DEPRESSED CURBS SHALL NOT BE MEASURED SEPARATELY FOR PAYMENT BUT SHALL BE INCLUDED IN THE COST OF "COMBINATION CONCRETE CURB AND GUTTER, TYPE B-6.12."

PROP. CURVE BETHANY

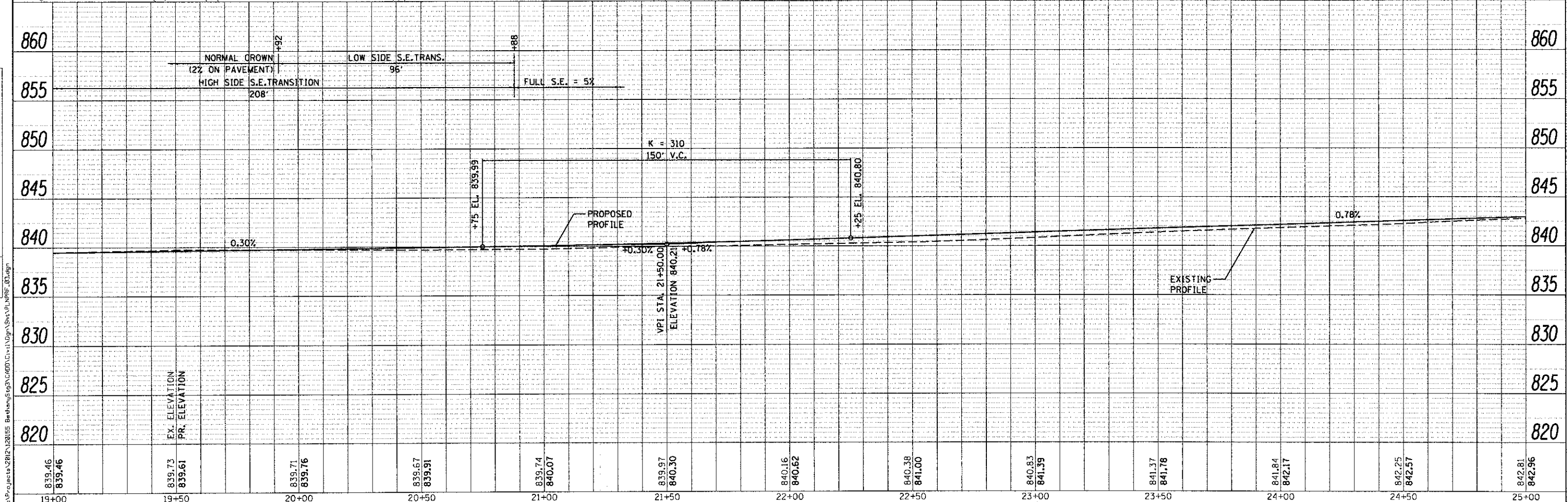
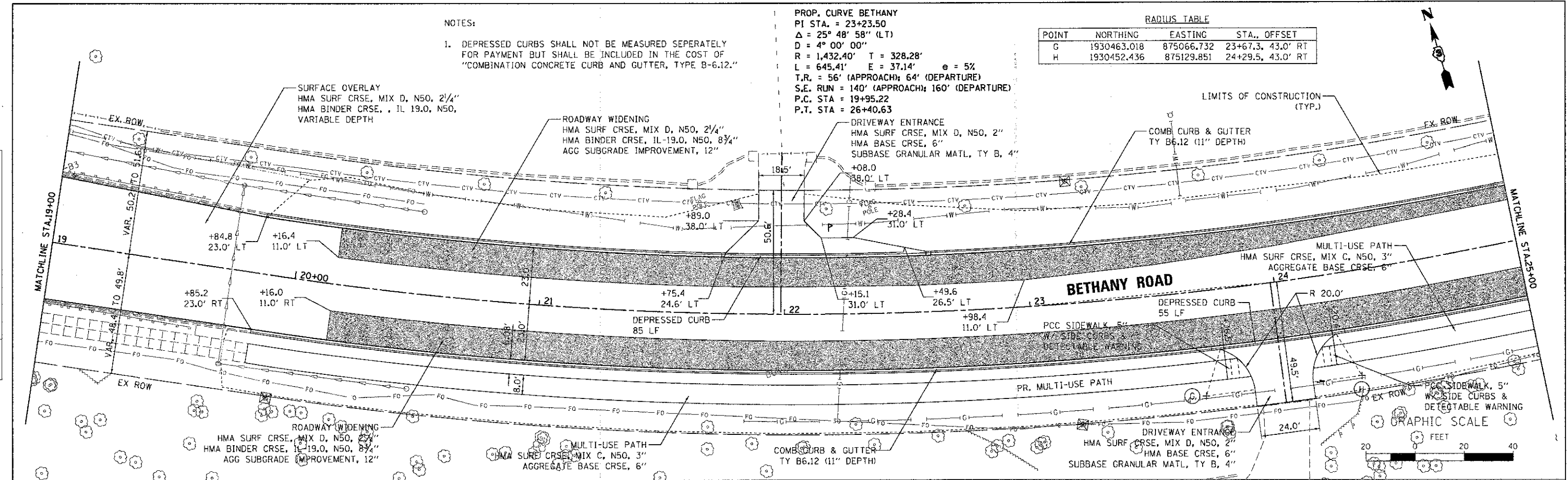
PI STA. = 23+23.50
 $\Delta = 25^\circ 48' 58''$ (LT)
 $D = 4^\circ 00' 00''$
 $R = 1,432.40'$ $T = 328.28'$
 $L = 645.41'$ $E = 37.14'$ $e = 5\%$
 $T.R. = 56'$ (APPROACH); $64'$ (DEPARTURE)
 $S.E. RUN = 140'$ (APPROACH); $160'$ (DEPARTURE)
 $P.C. STA = 19+95.22$
 $P.T. STA = 26+40.63$

RADIUS TABLE

POINT	NORTHING	EASTING	STA., OFFSET
G	1930463.018	875066.732	23+67.3, 43.0' RT
H	1930452.436	875129.851	24+29.5, 43.0' RT

DATE	BY	REVISION

DATE	BY	REVISION



839.46	839.73	839.71	839.67	839.74	839.97	840.16	840.38	840.63	841.37	841.84	842.25	842.81
839.46	839.61	839.76	839.91	840.07	840.30	840.62	841.00	841.39	841.78	842.17	842.57	842.96
19+00	19+50	20+00	20+50	21+00	21+50	22+00	22+50	23+00	23+50	24+00	24+50	25+00

WILLS BURKE KELSEY ASSOCIATES LTD.
 119 West Main Street, Suite 201
 St. Charles, Illinois 60174

USER NAME = nparris	DESIGNED - KMA	REVISED -
PLOT SCALE = 1:20'	DRAWN - NDP	REVISED -
PLOT DATE = 12/20/2012	CHECKED - DPB	REVISED -
	DATE = 12/21/12	REVISED -

STATE OF ILLINOIS
DEPARTMENT OF TRANSPORTATION

PLAN & PROFILE
 SCALE: 1"=20' SHEET NO. 3 OF 4 SHEETS STA. 19+00.00 TO STA. 25+00.00

F.A.U. RTE. 5355	SECTION 10-00167-01-WR	COUNTY DEKALB	TOTAL SHEETS 78	SHEET NO. 25
CONTRACT NO. 87544			ILLINOIS FED. AID PROJECT	