

**REMOVE EXISTING TRAFFIC SIGNAL EQUIPMENT**

THE FOLLOWING EXISTING TRAFFIC SIGNAL EQUIPMENT SHALL BE REMOVED BY THE CONTRACTOR AND SHALL REMAIN THE PROPERTY OF THE AGENCY LISTED BELOW. THE CONTRACTOR SHALL SAFELY STORE AND ARRANGE FOR DROP-OFF OF ALL EQUIPMENT TO BE RETURNED TO THE LISTED AGENCY AS PER THE TRAFFIC SIGNAL SPECIFICATIONS.

AGENCY: CITY OF DEKALB PUBLIC WORKS

- 8 EACH PEDESTRIAN PUSH-BUTTON
- 8 EACH PEDESTRIAN SIGNAL HEAD

THE FOLLOWING ITEMS SHALL BE REMOVED BY THE CONTRACTOR AND SHALL BE DISPOSED OF BY THEM OUTSIDE THE RIGHT-OF-WAY AT THEIR EXPENSE. THE SALVAGE VALUE OF THE REMOVED EQUIPMENT SHALL BE REFLECTED IN THE CONTRACT BID PRICE OF REMOVE TRAFFIC SIGNAL EQUIPMENT.

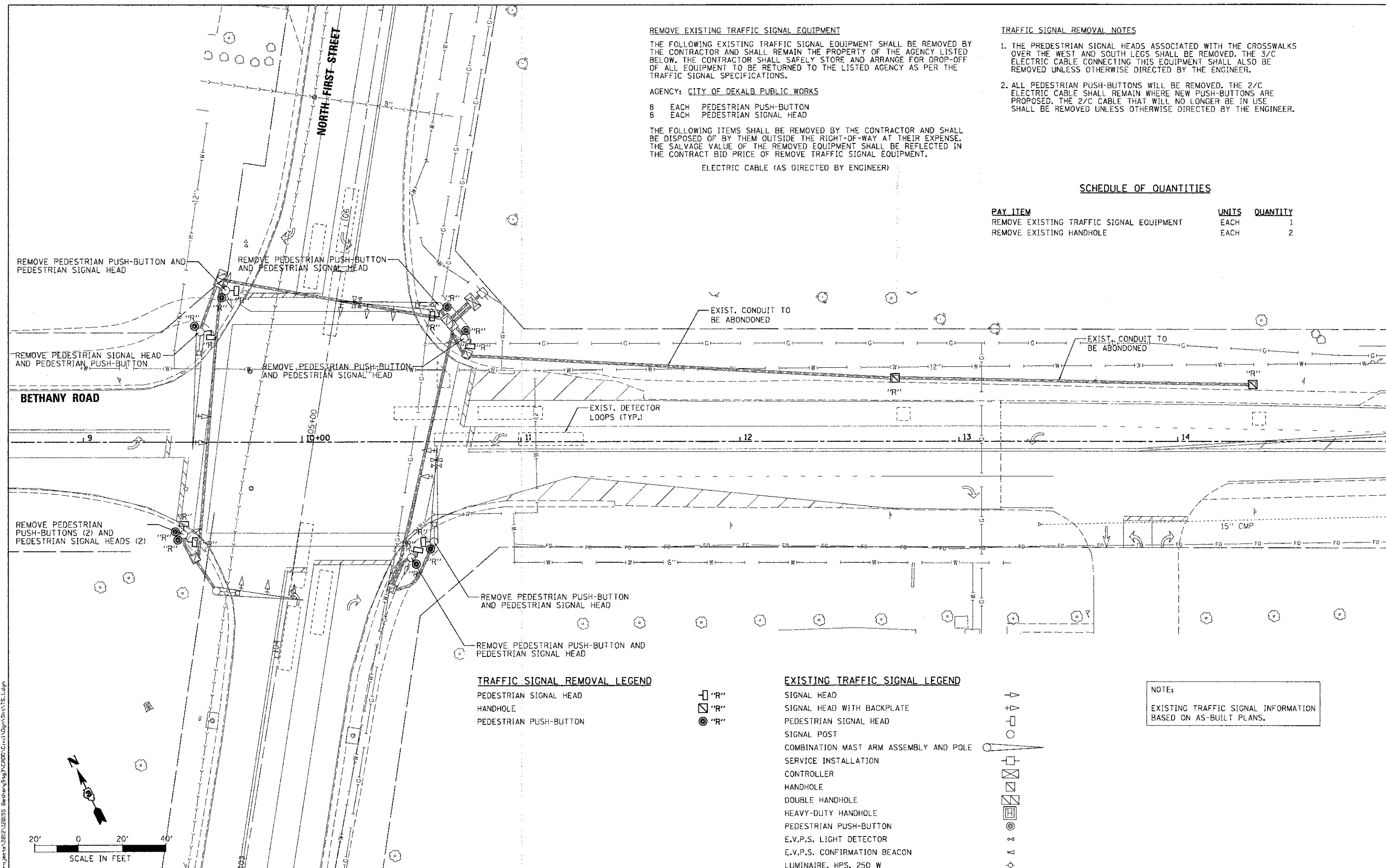
ELECTRIC CABLE (AS DIRECTED BY ENGINEER)

**TRAFFIC SIGNAL REMOVAL NOTES**

1. THE PEDESTRIAN SIGNAL HEADS ASSOCIATED WITH THE CROSSWALKS OVER THE WEST AND SOUTH LEGS SHALL BE REMOVED. THE 3/C ELECTRIC CABLE CONNECTING THIS EQUIPMENT SHALL ALSO BE REMOVED UNLESS OTHERWISE DIRECTED BY THE ENGINEER.
2. ALL PEDESTRIAN PUSH-BUTTONS WILL BE REMOVED. THE 2/C ELECTRIC CABLE SHALL REMAIN WHERE NEW PUSH-BUTTONS ARE PROPOSED. THE 2/C CABLE THAT WILL NO LONGER BE IN USE SHALL BE REMOVED UNLESS OTHERWISE DIRECTED BY THE ENGINEER.

**SCHEDULE OF QUANTITIES**

PAY ITEM	UNITS	QUANTITY
REMOVE EXISTING TRAFFIC SIGNAL EQUIPMENT	EACH	1
REMOVE EXISTING HANDHOLE	EACH	2



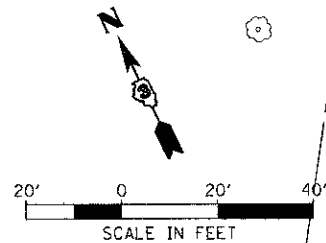
**TRAFFIC SIGNAL REMOVAL LEGEND**

- "R" PEDESTRIAN SIGNAL HEAD
- "R" HANDHOLE
- ⊙ "R" PEDESTRIAN PUSH-BUTTON

**EXISTING TRAFFIC SIGNAL LEGEND**

- "R" SIGNAL HEAD
- "R" SIGNAL HEAD WITH BACKPLATE
- ⊙ "R" PEDESTRIAN SIGNAL HEAD
- SIGNAL POST
- ⊙ COMBINATION MAST ARM ASSEMBLY AND POLE
- ⊙ SERVICE INSTALLATION
- ⊙ CONTROLLER
- ⊙ HANDHOLE
- ⊙ DOUBLE HANDHOLE
- ⊙ HEAVY-DUTY HANDHOLE
- ⊙ PEDESTRIAN PUSH-BUTTON
- ⊙ E.V.P.S. LIGHT DETECTOR
- ⊙ E.V.P.S. CONFIRMATION BEACON
- ⊙ LUMINAIRE, HPS, 250 W

NOTE:  
EXISTING TRAFFIC SIGNAL INFORMATION  
BASED ON AS-BUILT PLANS.



FILE NAME: M:\Projects\2012\120125 Bethany St\120125 Bethany St\120125 Bethany St.dwg

**WILLS BURKE KELSEY ASSOCIATES LTD.**  
116 West Main Street, Suite 201  
St. Charles, Illinois 60174

USER NAME: npernis	DESIGNED: KMA	REVISED:
PLOT SCALE: 1/2"=1'	DRAWN: KMA	REVISED:
PLOT DATE: 12/20/2012	CHECKED: DPB	REVISED:
	DATE: 12/21/12	REVISED:

**STATE OF ILLINOIS  
DEPARTMENT OF TRANSPORTATION**

**TRAFFIC SIGNAL REMOVAL PLAN**

SCALE: AS SHOWN    SHEET NO. 1 OF 3 SHEETS    STA.    TO STA.

F.A.U. RTE. 5355	SECTION 10-00167-01-WR	COUNTY DEKALB	TOTAL SHEETS 78	SHEET NO. 48
CONTRACT NO. 87544				
ILLINOIS FED. AID PROJECT				