

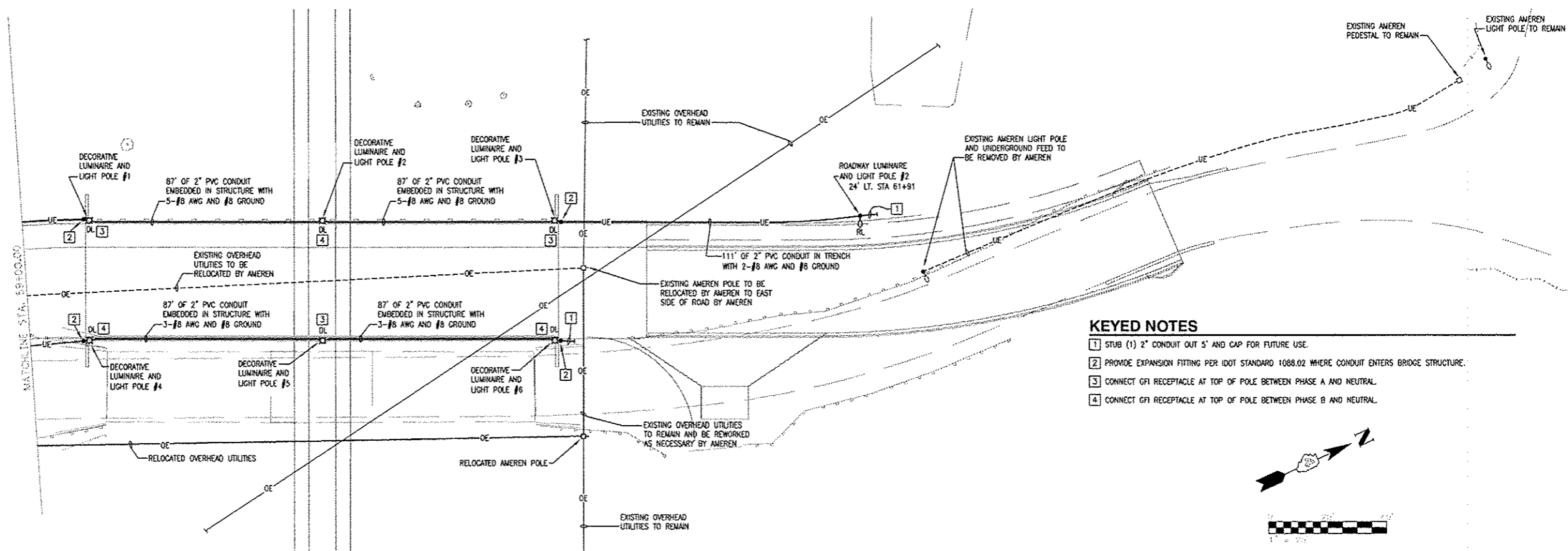
PARTIAL LIGHTING PLAN - SOUTH

ELECTRICAL SYMBOLS

[Symbol]	HANDHOLE
[Symbol]	UTILITY POLE
[Symbol]	UTILITY POLE AND LUMINAIRE
[Symbol]	ROADWAY LUMINAIRE AND POLE
[Symbol]	DECORATIVE LUMINAIRE AND POLE
[Symbol]	OVERHEAD ELECTRICAL
[Symbol]	UNDERGROUND ELECTRICAL
[Symbol]	WIRING LEGEND: PHASE WIRE ("HOT") EQUIPMENT GROUND NEUTRAL

ABBREVIATIONS:

(E)	EXISTING
A	AMPERE
C	CONDUIT
CCT	CIRCUIT
DL	DECORATIVE LUMINAIRE
GR	GROUND
HH	HANDHOLE
P	POLE
P, #	PHASE
RL	ROADWAY LUMINAIRE
V	VOLTS
W	WATTS
XFMR	TRANSFORMER



PARTIAL LIGHTING PLAN - NORTH

- KEYED NOTES**
- 1 STUB (1) 2" CONDUIT OUT 5' AND CAP FOR FUTURE USE.
 - 2 PROVIDE EXPANSION FITTING PER IDOT STANDARD 1088.02 WHERE CONDUIT ENTERS BRIDGE STRUCTURE.
 - 3 CONNECT GFI RECEPTACLE AT TOP OF POLE BETWEEN PHASE A AND NEUTRAL.
 - 4 CONNECT GFI RECEPTACLE AT TOP OF POLE BETWEEN PHASE B AND NEUTRAL.

FILE NAME	USER NAME	DESIGNED - CMT	REVISED	CITY OF GALESBURG	SOANGETAHA ROAD LIGHTING	M.S.	SECTION	COUNTY	TOTAL SHEETS	SHEET NO.	
		DRAWN - CMT	REVISED			651	07-00651-03-BR	KNOX	67	26	
		CHECKED - CMT	REVISED			CONTRACT NO. 89625					
		DATE - 01/04/13	REVISED			ILLINOIS					

SCALE: SHEET E1 OF E3 SHEETS STA. TO STA.

MEP Midwest Engineering Professionals Inc.
 807 S. Main Street - Bloomington, Illinois 61820
 Telephone: (309) 238-1117 Fax: (309) 238-6222
 Email: mep@meppro.com
 MEP Project No. 12-16 © Design Firm Registration #184-021925