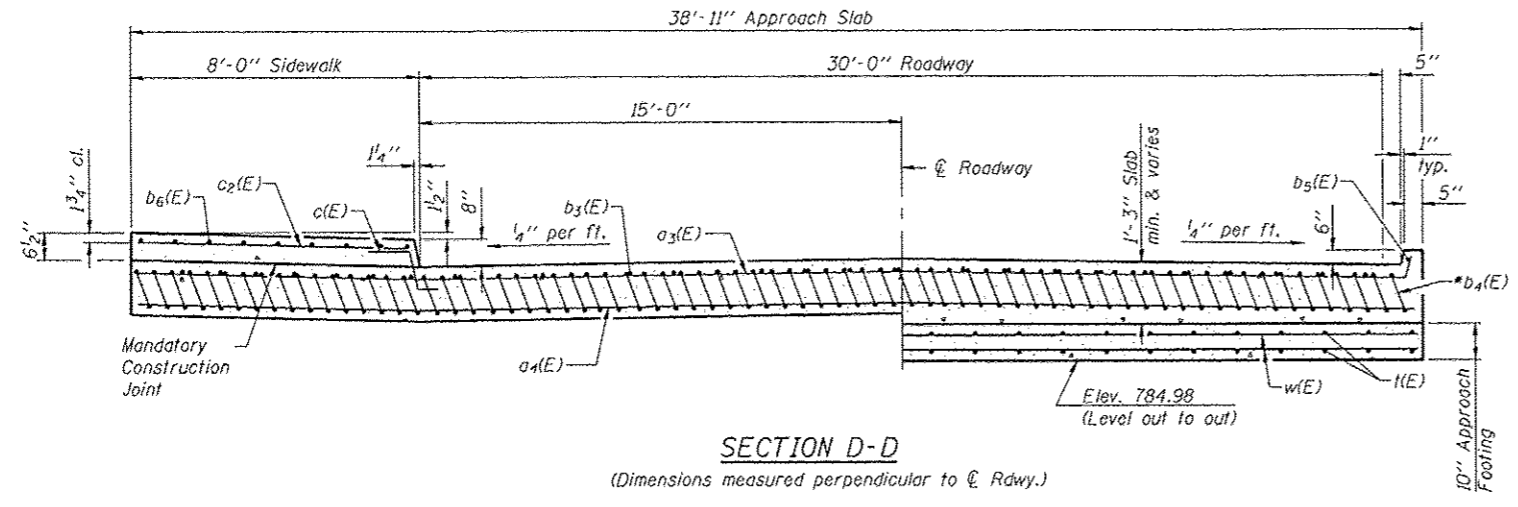
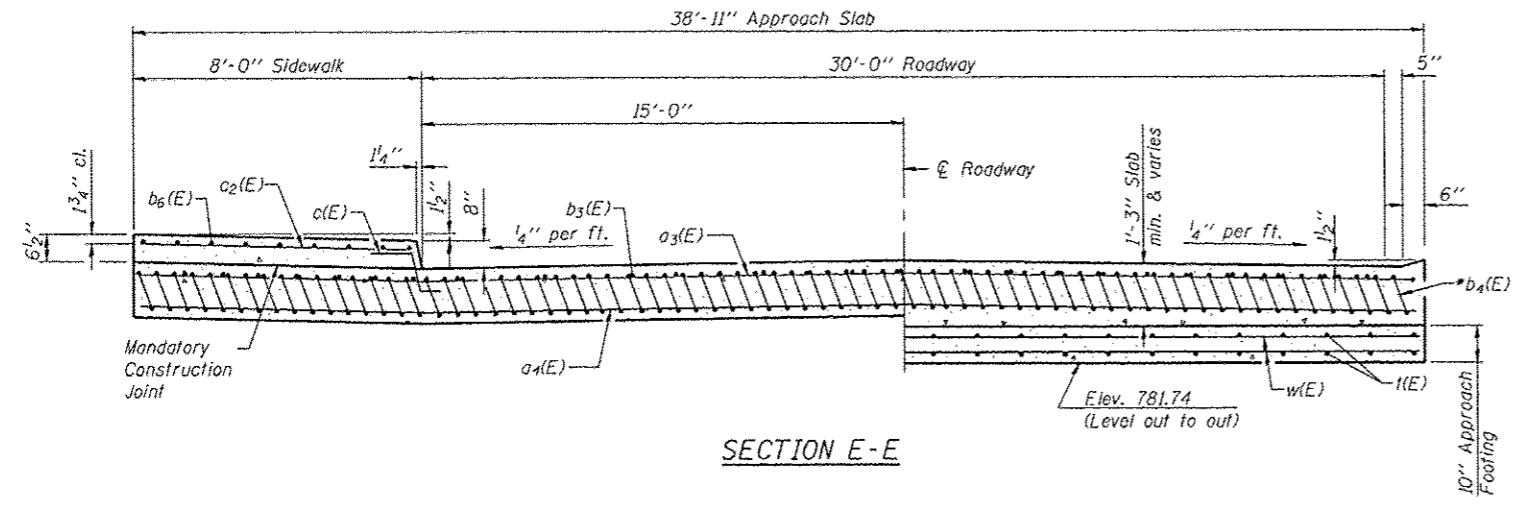


SECTION C-C

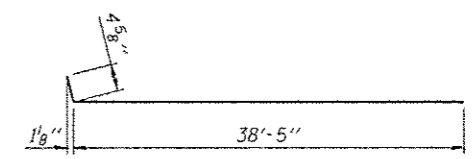
Notes:
 Approach slab and sidewalk concrete shall be paid for as Concrete Superstructure.
 Approach footing concrete shall be paid for as Concrete Structures.
 Reinforcement shall be paid for as Reinforcement Bars, Epoxy Coated.
 For v(E) bar details, see sheet 11 of 26.
 The approach footing maximum applied service bearing pressure (Omax) = 2.0 ksf.
 For bar splicer details, see sheet 22 of 26.
 Cost of excavation for approach footing included with Concrete Structures.
 For Granular Backfill for Structures and drainage treatment details, see sheet 2 of 26.
 Place 1/2" P.J.F. between approach slab and concrete curb and gutter. Cost included with Concrete Superstructure.



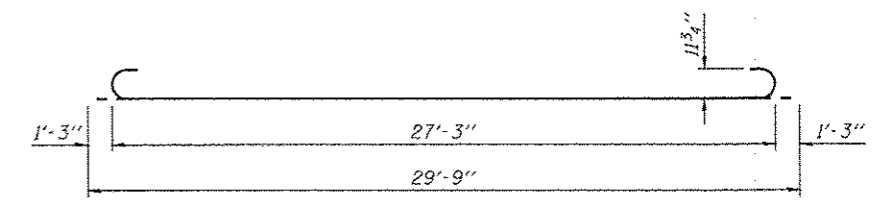
SECTION D-D
 (Dimensions measured perpendicular to C.Rdwy.)



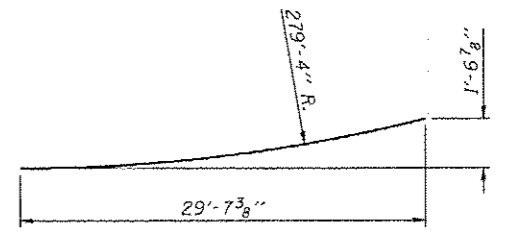
SECTION E-E



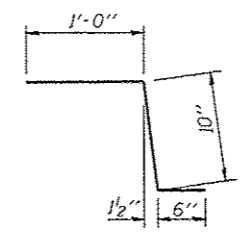
BAR a3(E)



BAR b4(E)



BAR b5(E)

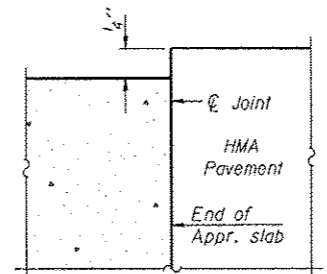


BAR c(E)

TWO APPROACHES
 BILL OF MATERIAL

Bar	No.	Size	Length	Shape
a3(E)	50	#4	38'-10"	—
a4(E)	92	#5	38'-7"	—
b3(E)	64	#4	29'-8"	—
b4(E)	186	#9	29'-9"	—
b5(E)	1	#1	29'-8"	—
b6(E)	18	#5	28'-8"	—
c(E)	60	#5	2'-4"	—
c2(E)	60	#5	7'-8"	—
I(E)	156	#4	9'-8"	—
w(E)	80	#5	38'-7"	—
Concrete Superstructure			Cu. Yd.	128.0
Concrete Structures			Cu. Yd.	24.1
Reinforcement Bars, Epoxy Coated			Pound	30490

* Tilt #9 b4(E) bars as required to maintain clearance.
 ** Cost included with Concrete Superstructure.



DETAIL A

(Sheet 2 of 2)