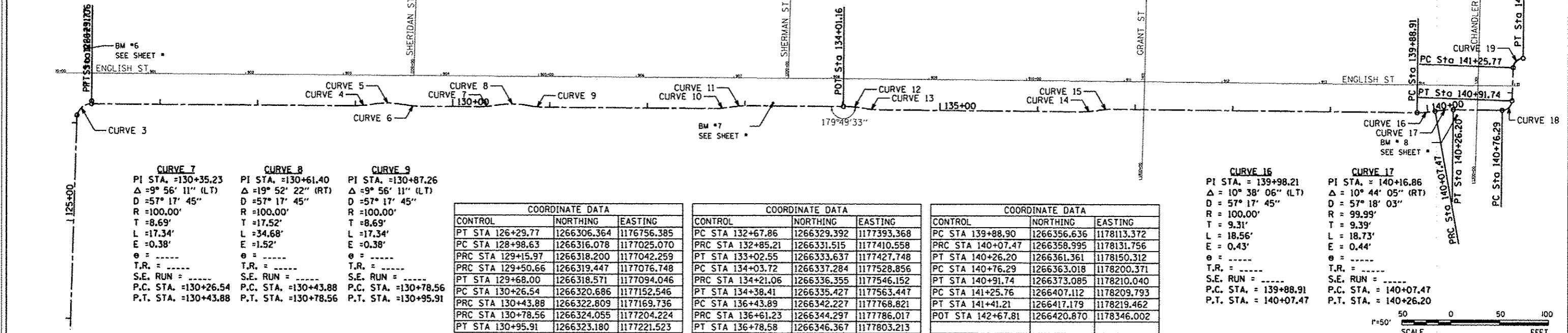


Curve data for CURVE 3 through CURVE 19, including PI STA, Δ, D, R, T, L, E, T.R., S.E. RUN, P.C. STA, P.T. STA.

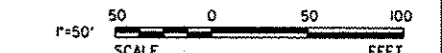


COORDINATE DATA table with columns: CONTROL, NORTHING, EASTING. Rows include PT, PC, PRC, PT, PC, PRC stations for curves 7, 8, 9.

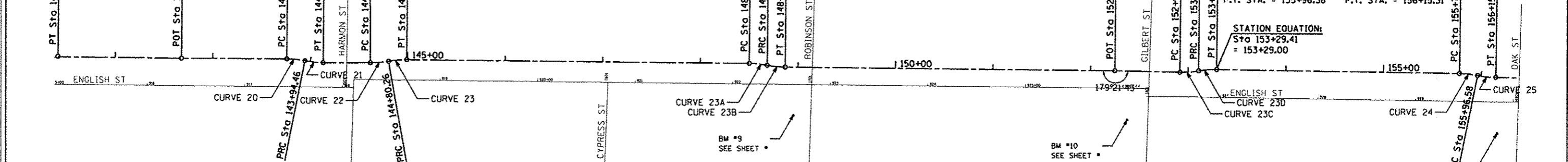
COORDINATE DATA table with columns: CONTROL, NORTHING, EASTING. Rows include PT, PC, PRC, PT, PC, PRC stations for curves 10, 11, 12.

COORDINATE DATA table with columns: CONTROL, NORTHING, EASTING. Rows include PT, PC, PRC, PT, PC, PRC, POT stations for curves 13, 14, 15, 16.

COORDINATE DATA table with columns: CONTROL, NORTHING, EASTING. Rows include PT, PC, PRC, PT, PC, PRC stations for curves 16, 17.



Curve data for CURVE 20 through CURVE 25, including PI STA, Δ, D, R, T, L, E, T.R., S.E. RUN, P.C. STA, P.T. STA.



COORDINATE DATA table with columns: CONTROL, NORTHING, EASTING. Rows include PT, PC, PRC, PT, PC, PRC stations for curves 23A, 23B.

COORDINATE DATA table with columns: CONTROL, NORTHING, EASTING. Rows include PT, PC, PRC, PT, PC, PRC stations for curves 23C, 23D.

COORDINATE DATA table with columns: CONTROL, NORTHING, EASTING. Rows include PT, PC, PRC, PT, PC, PRC stations for curves 23C, 23D.

