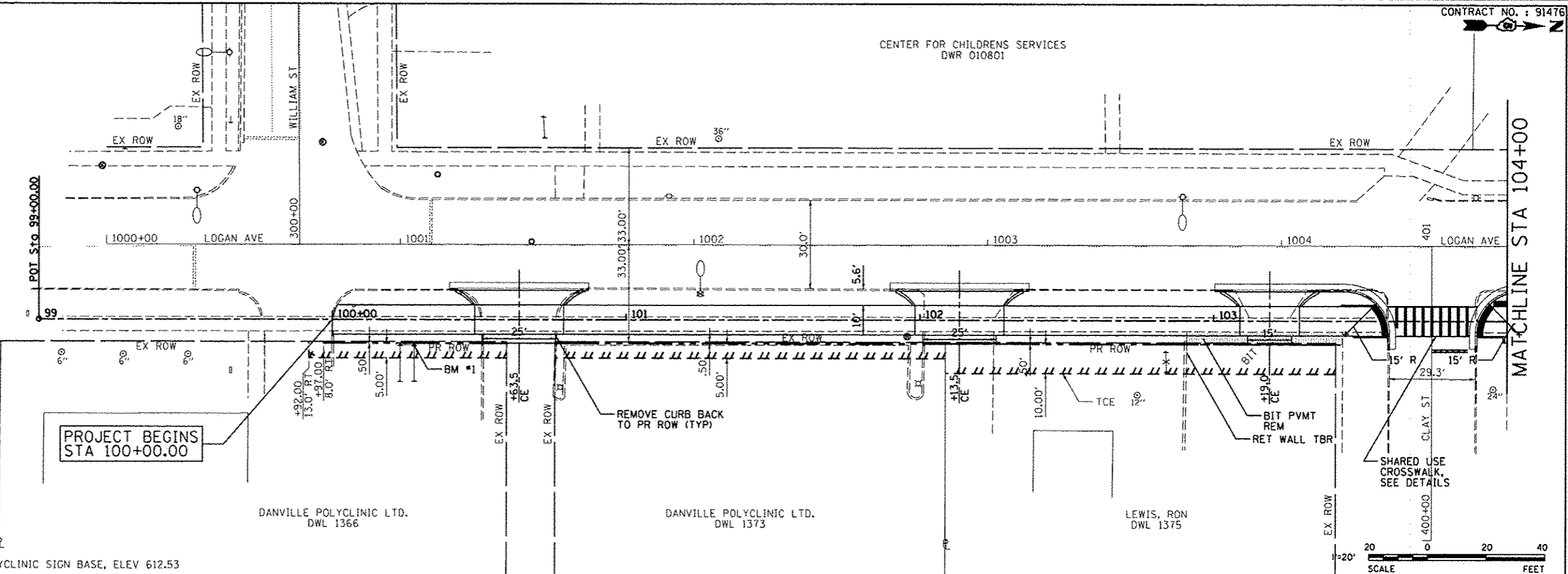


CENTER FOR CHILDRENS SERVICES
DWR 010801



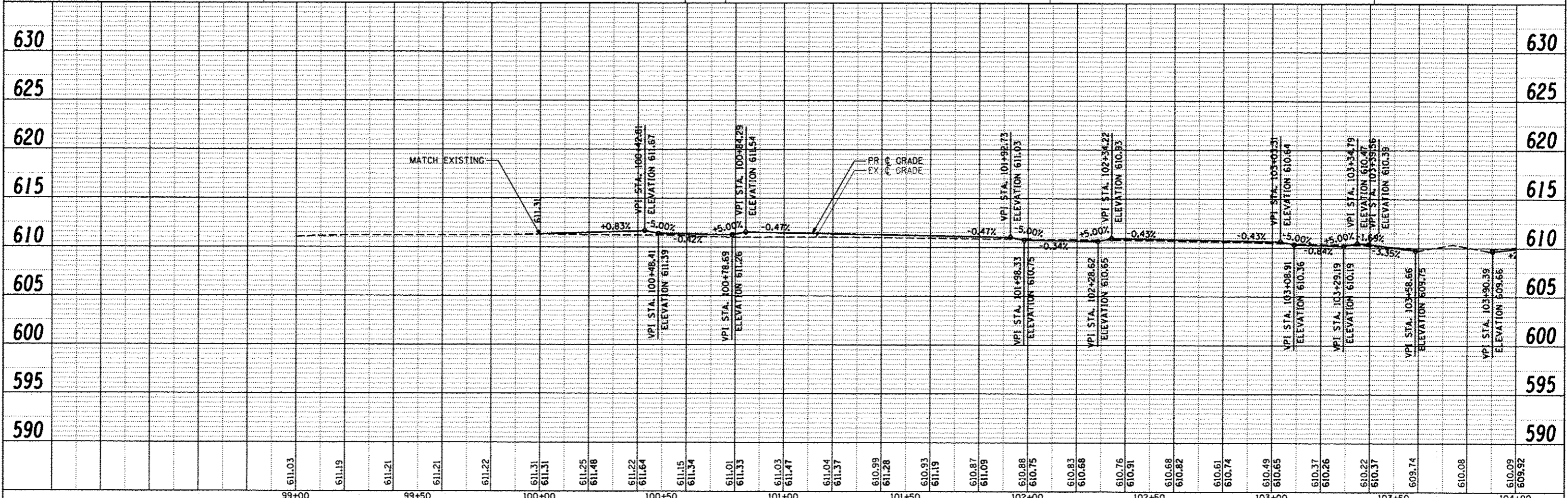
PROJECT BEGINS
STA 100+00.00

DANVILLE POLYCLINIC LTD.
DWL 1366

DANVILLE POLYCLINIC LTD.
DWL 1373

LEWIS, RON
DWL 1375

BM #1 NW CORNER OF METAL TOP OF DANVILLE POLYCLINIC SIGN BASE, ELEV 612.53



PRINTED DATE: 10/30/2012
 PLOT DATE: 10/30/2012
 PLOT SCALE: 1"=40'
 PLOT SHEET: 1 OF 14
 PLOT STATION: 100+00 TO 104+00
 PLOT ELEVATION: 610 TO 630
 PLOT PROJECT: LINCOLN PARK HISTORIC DIST SHARED USE PATH
 PLOT CITY: DANVILLE, ILLINOIS
 PLOT COUNTY: VERMILION COUNTY
 PLOT STATE: ILLINOIS
 PLOT CONTRACT: 91476
 PLOT SHEET: 1 OF 14

ESI CONSULTANTS, LTD 753 WINDSOR ROAD CHARLESTON, IL 61920 (217) 348-1900 WWW.ESI-CONSULTANTS.LTD.COM ILLINOIS DEPARTMENT OF PROFESSIONAL REGULATION REGISTRATION #184-003685	CITY OF DANVILLE 1155 E. VOORHEES STREET SUITE A DANVILLE, IL 61832	SECTION NO. 08-00224-00-BT ENGR: ADG ESI PROJECT NO: 07-163-074-01 DRAWN BY: ADG DATE: 10-31-2012 QC/QA: DLO/PAT	LINCOLN PARK HISTORIC DIST SHARED USE PATH CITY OF DANVILLE, VERMILION COUNTY	PLAN AND PROFILE STA 100+00.00 TO STA 104+00	DRAWING NO. 14 OF 40
---	---	---	---	--	-----------------------------------