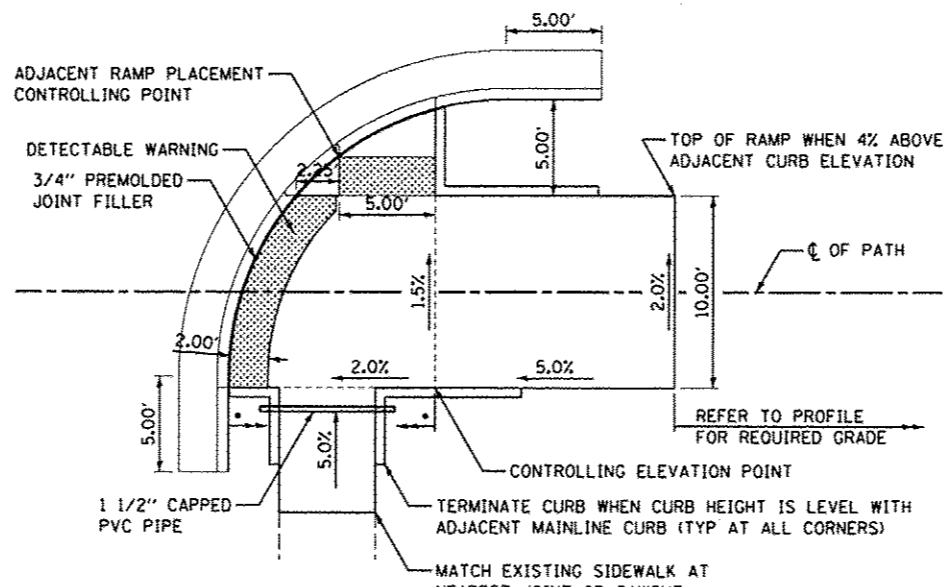
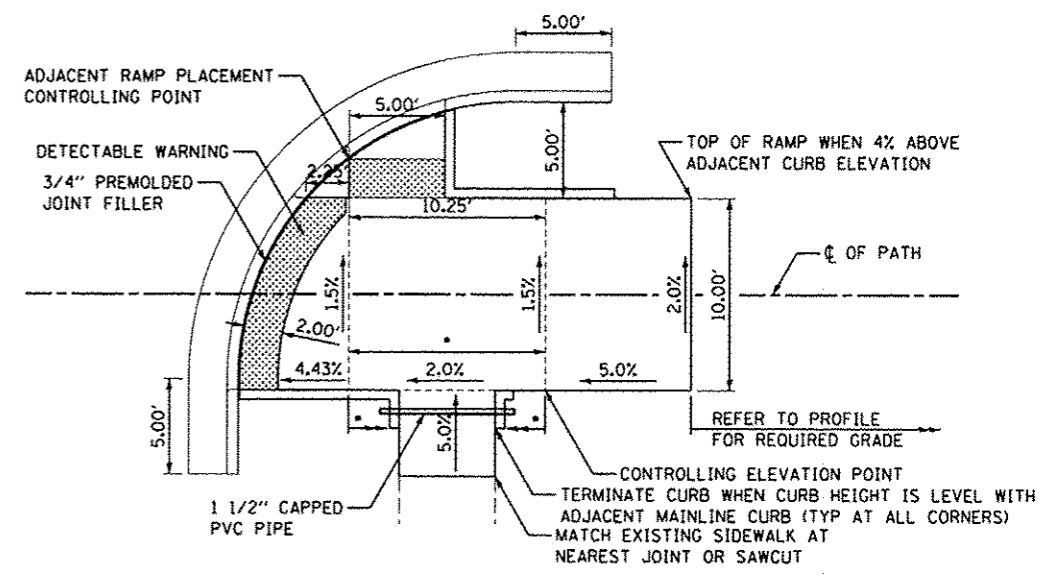


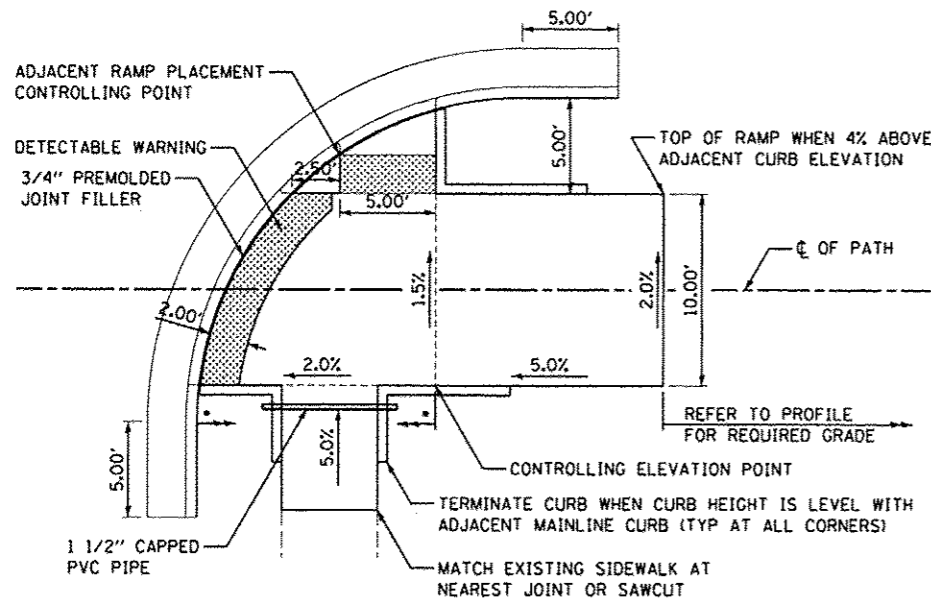
*LOCATION OF EXISTING SIDEWALK VARIES WITHIN THESE LIMITS
TYPICAL RAMP DETAIL WITH 15' RADI & 5' PATH OFFSET



*LOCATION OF EXISTING SIDEWALK VARIES WITHIN THESE LIMITS
TYPICAL RAMP DETAIL WITH 15' RADI & 5' PATH OFFSET



*LOCATION OF EXISTING SIDEWALK VARIES WITHIN THESE LIMITS
TYPICAL RAMP DETAIL WITH 15' RADI & 5' PATH OFFSET



*LOCATION OF EXISTING SIDEWALK VARIES WITHIN THESE LIMITS
TYPICAL RAMP DETAIL WITH 17.5' RADI & 5' PATH OFFSET

NOTES:

1. MATCH EXISTING CURB AND CUTTER WITH MINIMUM 6" HIGH BARRIER CURB. TRANSITION CURB HEIGHT OVER 2" TO MATCH EXISTING CURB HEIGHT. IF NO EXISTING GUTTER FLAG, PROVIDE A B6-24 COMBINATION CONCRETE CURB AND GUTTER.
2. 3/4" PREMOLDED JOINT FILLER SHALL BE PLACED AT BACK OF CURB WHEN CURB ABUTS SIDEWALKS.
3. MAXIMUM SIDEWALK CROSS SLOPE SHALL BE 2%.
4. MINIMUM SIDEWALK THICKNESS SHALL BE 5".
5. DETECTABLE WARNING SHALL BE BRICK RED.
6. MAXIMUM LONGITUDINAL SIDEWALK SLOPE SHALL BE 5%.
7. 1 1/2" CAPPED PVC PIPE SHALL EXTEND 1' BEYOND AND AT A DEPTH OF 1' BELOW PCC SIDEWALK.

PRINTED DATE: 10/30/2012
 P:\Projects\2012\10-30-2012\Lincoln Park Shared Use Path.dwg
 User: ESI\jls
 Plot: 11/16/12 11:43 AM
 Plot File: C:\Program Files\Autodesk\LTPlotter\Plotter.dwg
 Plot Device: HP DesignJet 5000 Series
 Plot Scale: 1.0000
 Plot Color: Black
 Plot Lineweight: 0.2000
 Plot Linetype: Solid
 Plot Font: Arial, 10.00
 Plot Style:.ctb

NO.	DATE	DESCRIPTION OF REVISIONS	NO.	DATE	DESCRIPTION OF REVISIONS