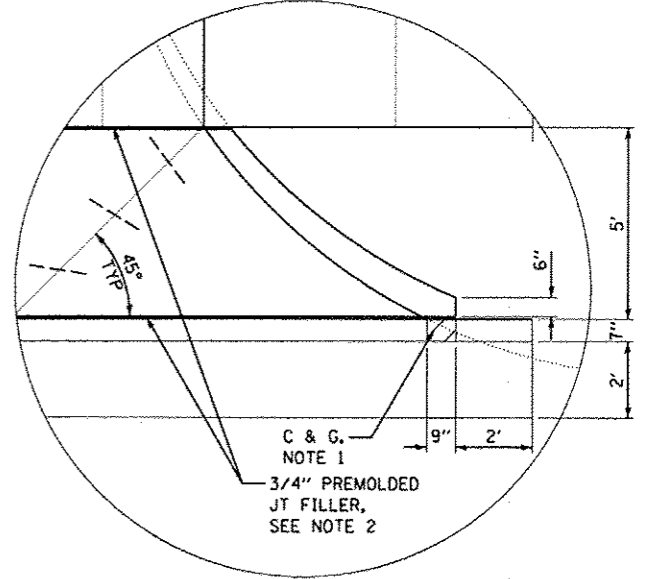
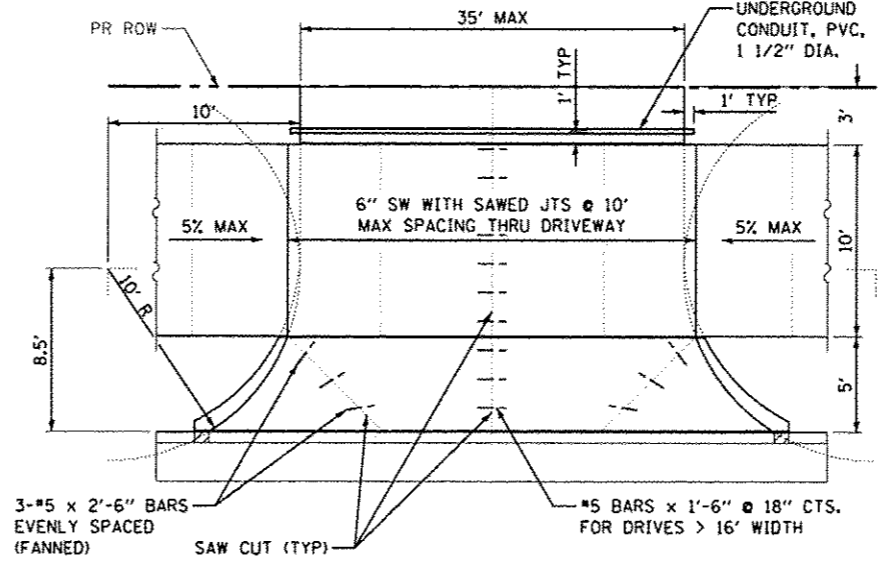
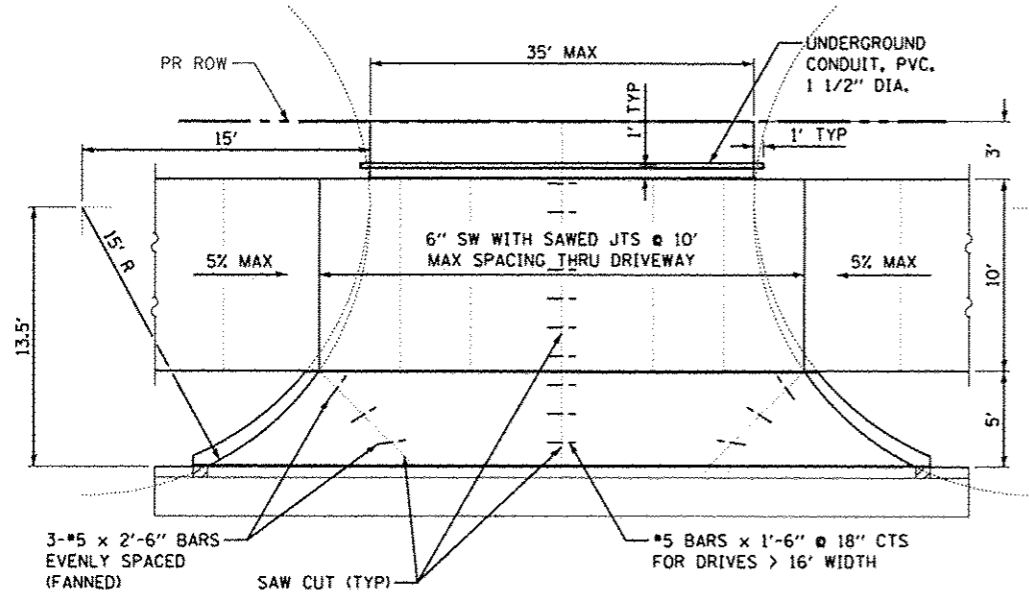
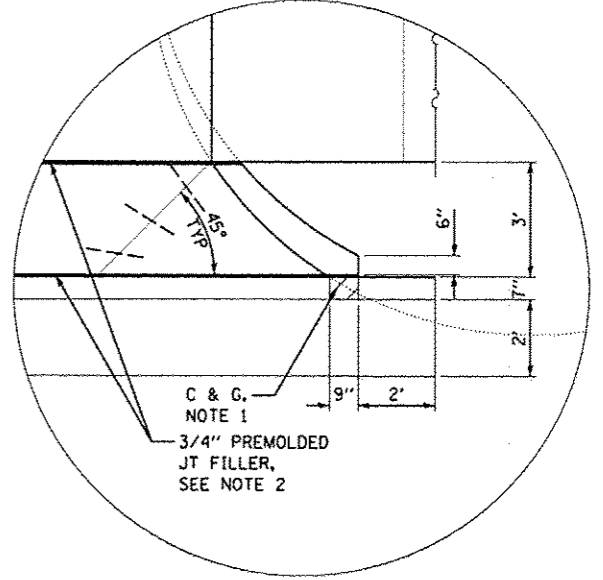
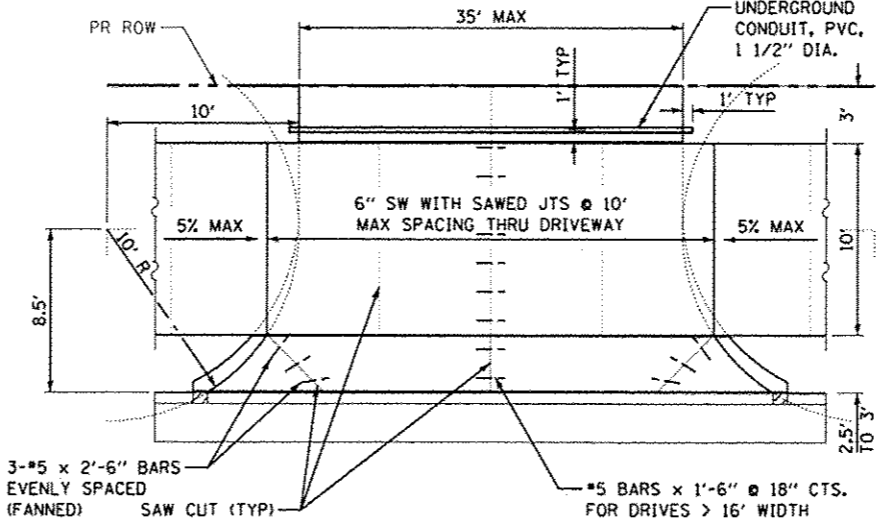
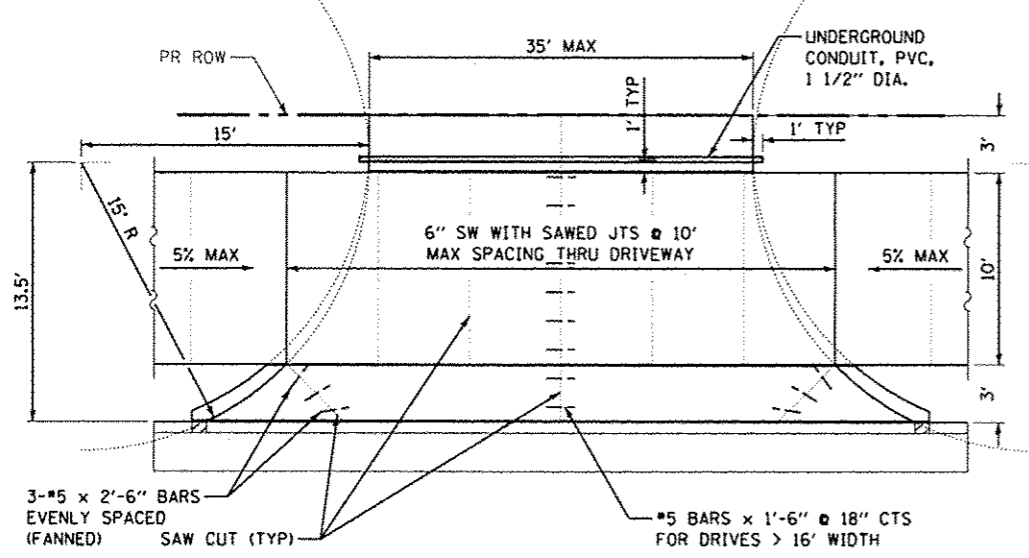


5' OFFSET

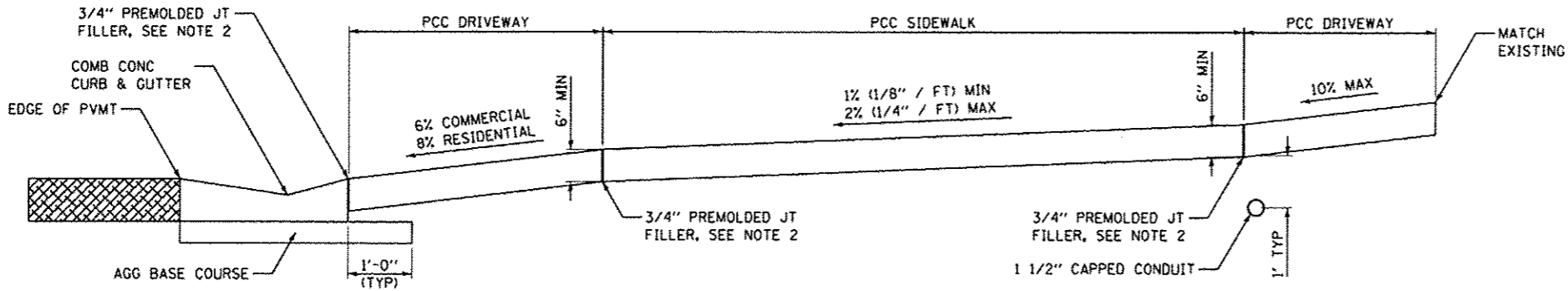


3' OFFSET



TYPICAL COMMERCIAL DRIVEWAY DETAILS

TYPICAL RESIDENTIAL DRIVEWAY DETAILS



TYPICAL DRIVEWAY CROSS SECTION

NOTES:

1. MATCH EXISTING CURB AND GUTTER WITH MINIMUM 6" HIGH BARRIER CURB. TRANSITION CURB HEIGHT OVER 2" TO MATCH EXISTING CURB HEIGHT. IF NO EXISTING GUTTER FLAG, PROVIDE A B6-24 COMBINATION CONCRETE CURB AND GUTTER.
2. 3/4" PREMOLDED JOINT FILLER SHALL BE PLACED AT BACK OF CURB AND ON BOTH SIDES OF SIDEWALKS THROUGH ALL DRIVEWAYS.
3. MINIMUM SIDEWALK THICKNESS SHALL BE 5".
4. MINIMUM DRIVEWAY THICKNESS SHALL BE 6".
5. MAXIMUM LONGITUDINAL SIDEWALK SLOPE SHALL BE 5%.

REVISED DATE: 10/30/2012

NO.	DATE	DESCRIPTION OF REVISIONS	NO.	DATE	DESCRIPTION OF REVISIONS