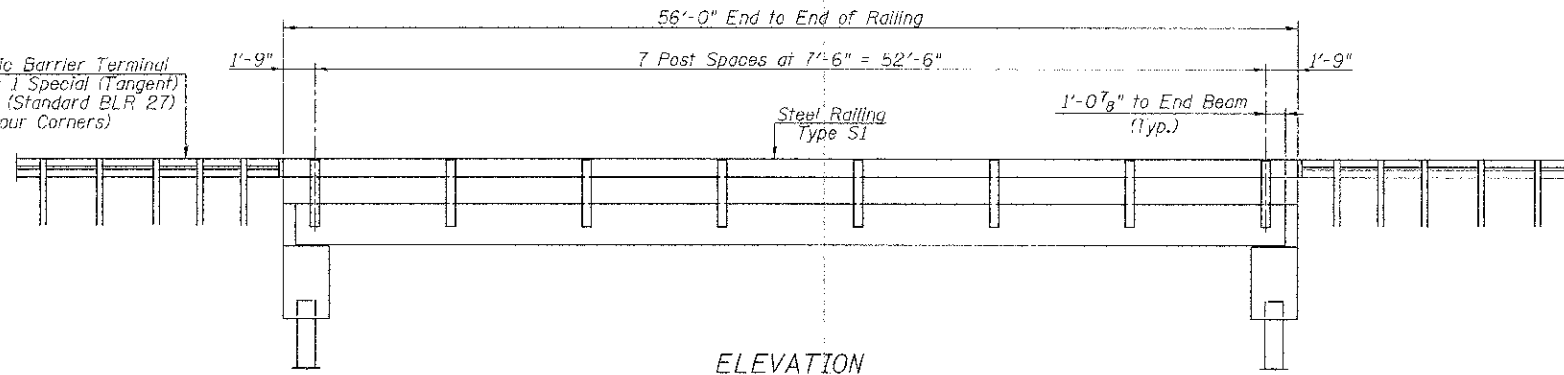
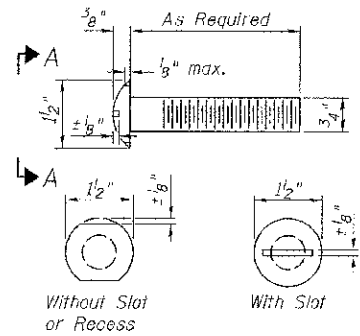


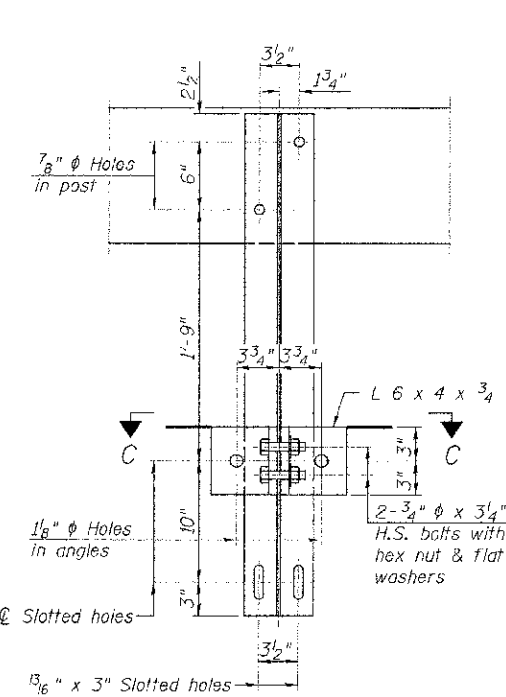
Traffic Barrier Terminal
Types 1 Special (Tangent)
& 5A (Standard BLR 27)
(All Four Corners)



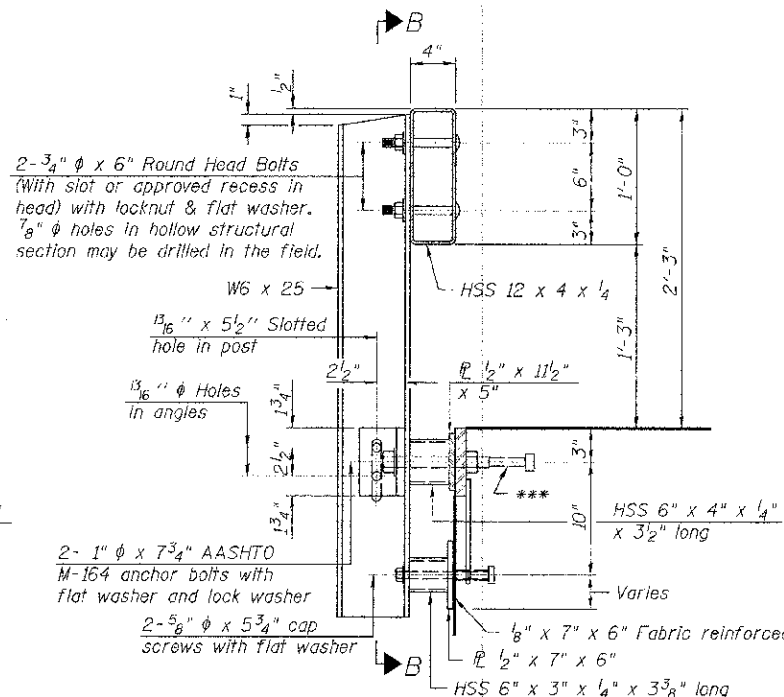
ELEVATION
(Showing Outside Face)



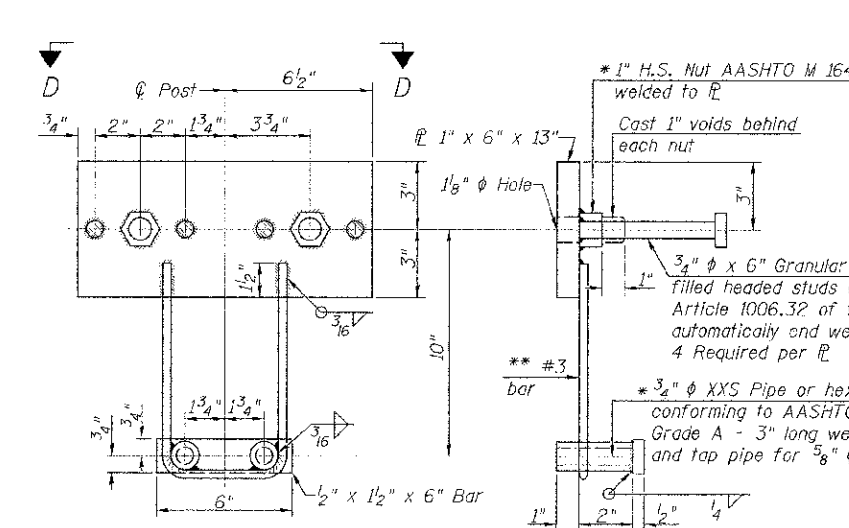
VIEW A-A
ROUND HEAD BOLT



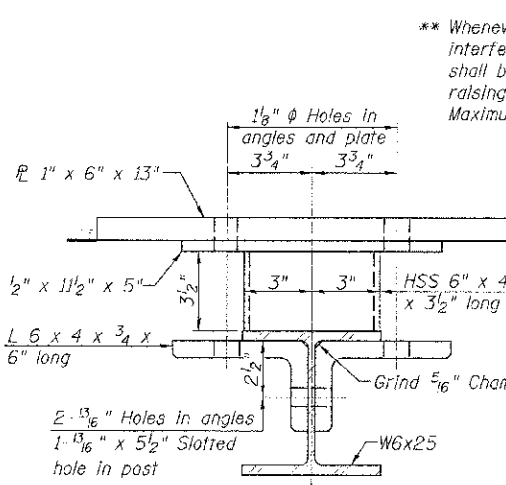
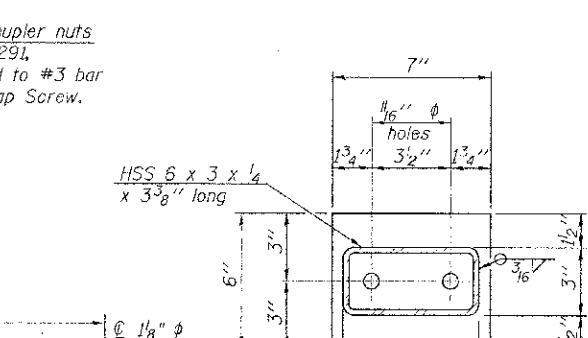
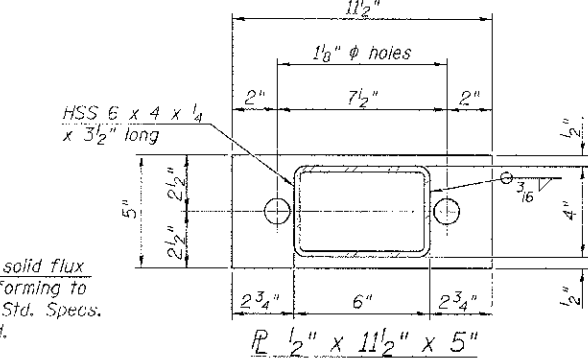
SECTION B-B



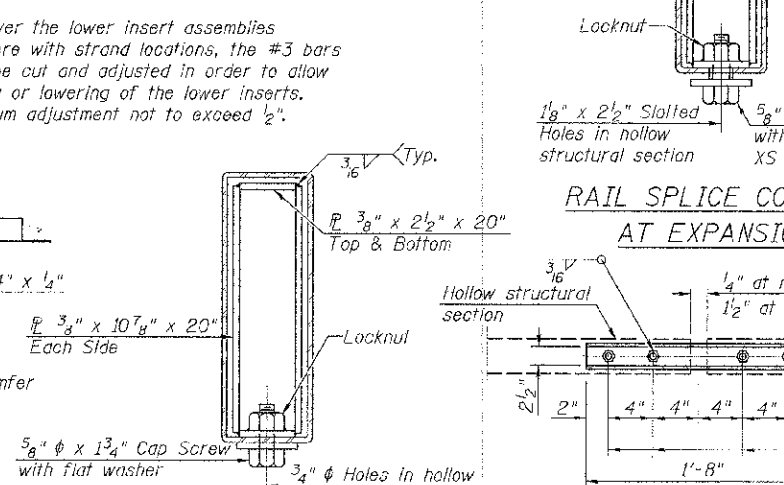
SECTION AT RAILING POST



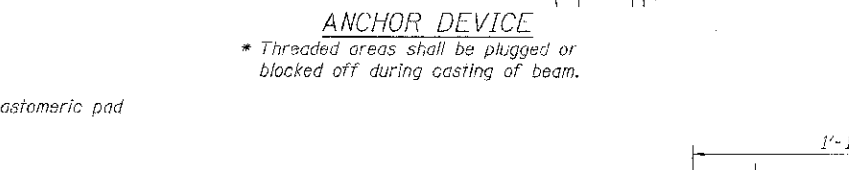
ANCHOR DEVICE



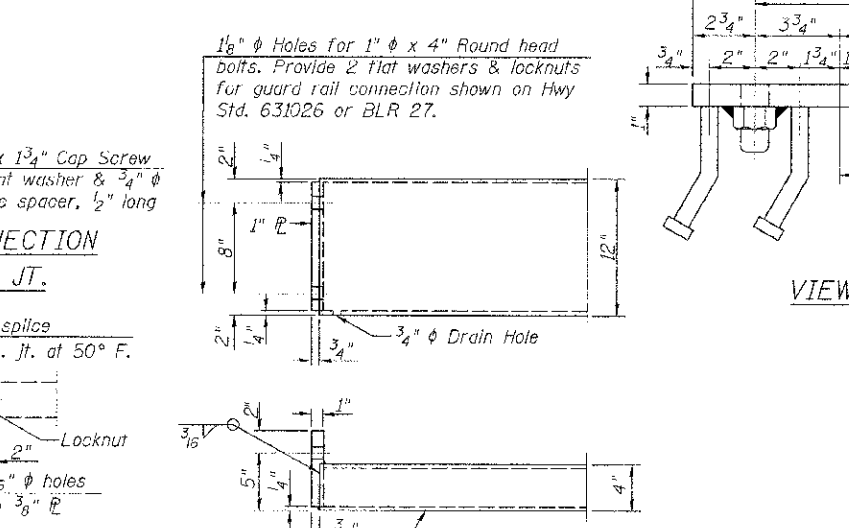
SECTION C-C



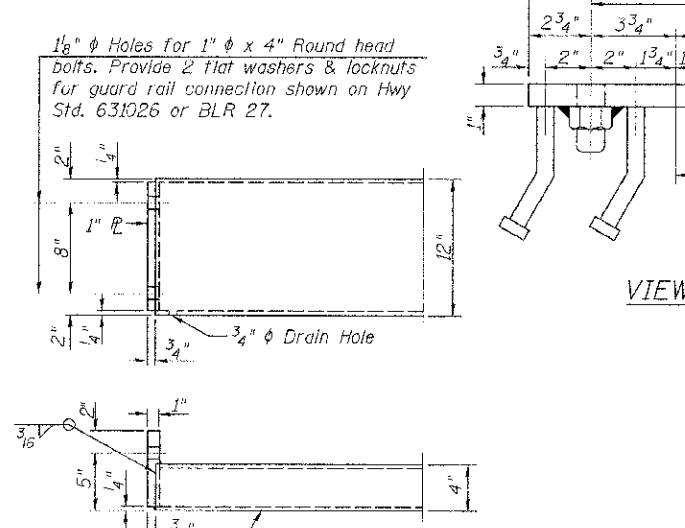
SECTIONS AT RAIL SPLICE



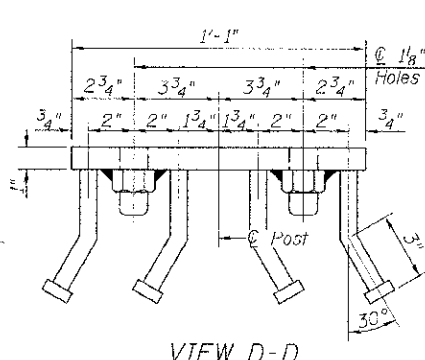
RAIL SPLICE CONNECTION
AT EXPANSION JT.



PLAN-BOTT. SPLICE AT
TYPICAL



END OF RAIL DETAILS



VIEW D-D

** Whenever the lower insert assemblies interfere with strand locations, the #3 bars shall be cut and adjusted in order to allow raising or lowering of the lower inserts. Maximum adjustment not to exceed 1/2".

Notes:
All field drilled holes shall be coated with an approved zinc rich paint before erection.
For multi-span bridges, sufficient 1/4" x 6" x 1'-2" galvanized steel shims shall be provided to align rail between adjacent spans. Cost included with Steel Railing, Type S-1.
All steel rail elements shall be galvanized according to Article 509.05 of the Standard Specifications.
*** The studs of the anchor devices shall be placed below the top reinforcement bars and the outermost longitudinal reinforcement bar shall be placed directly above the studs of the rail post anchor device.

BILL OF MATERIAL

Item	Unit	Quantity
Steel Railing, Type S-1	Foot	112

R-23A	7-1-10	(10'-9" Maximum Post Spacing)	DESIGNED -	REVISD -	<p>Allen Henderson & Associates, Inc. Civil and Structural Engineers Springfield, IL. 62703 Phone: (217)544-8033 IL Design Firm No. 184-001907</p>	<p>STEEL RAILING, TYPE S1 STRUCTURE NO. 065-3128</p>	<p>C.H. R.E.L.</p> <p>SECTION 11-00064-00-BR</p> <p>COUNTY MENARD</p> <p>TOTAL SHEETS 18</p> <p>SHEET NO. 4 OF 7 SHEETS</p> <p>CONTRACT NO. 93586</p> <p>ILLINOIS FED. AID PROJECT</p>
USED NAME	DATE	BY	CHECKED -	REVISD -			
PROJECT NAME	DATE	BY	CHECKED -	REVISD -			
PROJECT NAME	DATE	BY	CHECKED -	REVISD -			