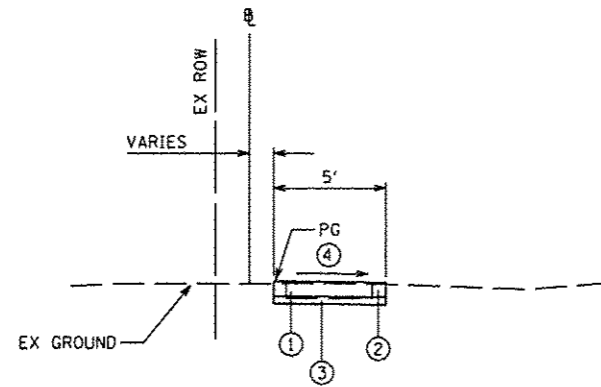
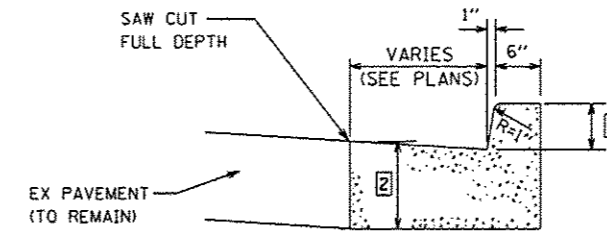


- ① EXISTING CONCRETE SIDEWALK (TO BE REMOVED UNLESS NOTED OTHERWISE)
- ② PROPOSED PORTLAND CEMENT CONCRETE SIDEWALK, 4 INCH
- ③ PROPOSED FINE AGGREGATE SUBBASE, 2" (COST TO BE INCLUDED IN PCC SIDEWALK)
- ④ CROSS SLOPE SHALL BE 1.5% NOMINAL (2% MAX) UNLESS OTHERWISE SHOWN

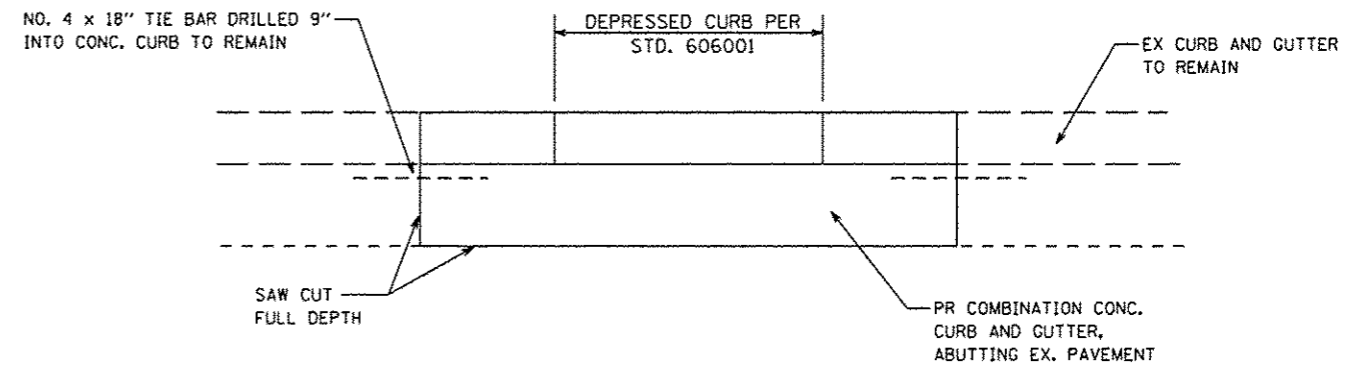


**TYPICAL SIDEWALK SECTION**  
(EXCEPT TRANSITIONS)



- NOTE:**
- 1 MATCH HEIGHT OF EX CURB AND GUTTER.
  - 2 THICKNESS VARIES. MATCH EX. PAVEMENT (TO REMAIN). MINIMUM THICKNESS OF 9".

**TYPICAL COMBINATION CURB AND GUTTER SECTION**



**PLAN COMBINATION CURB AND GUTTER**

FILE NAME *	USER NAME * #USER*	DESIGNED -	REVISED -	<b>CITY OF RUSHVILLE SAFE ROUTES TO SCHOOLS PROGRAM</b>	<b>CONSTRUCTION DETAILS</b>			F.A. RTE.	SECTION	COUNTY	TOTAL SHEETS	SHEET NO.
P:\0902120\Design\Design\CADD Sheets\0609-shit-const details.dgn		DRAWN - MCM	REVISED -					09-00018-00-SW	SCHUYLER	11	9	
	PLOT SCALE > 40.0000 * / IN.	CHECKED - WJS	REVISED -		SCALE: NTS			SHEET NO. OF SHEETS STA. TO STA.			CONTRACT NO.	
	PLOT DATE = 10/24/2012	DATE - 09/2012	REVISED -		FED. ROAD DIST. NO.			ILLINOIS FED. AID PROJECT			SRYS-40090601	