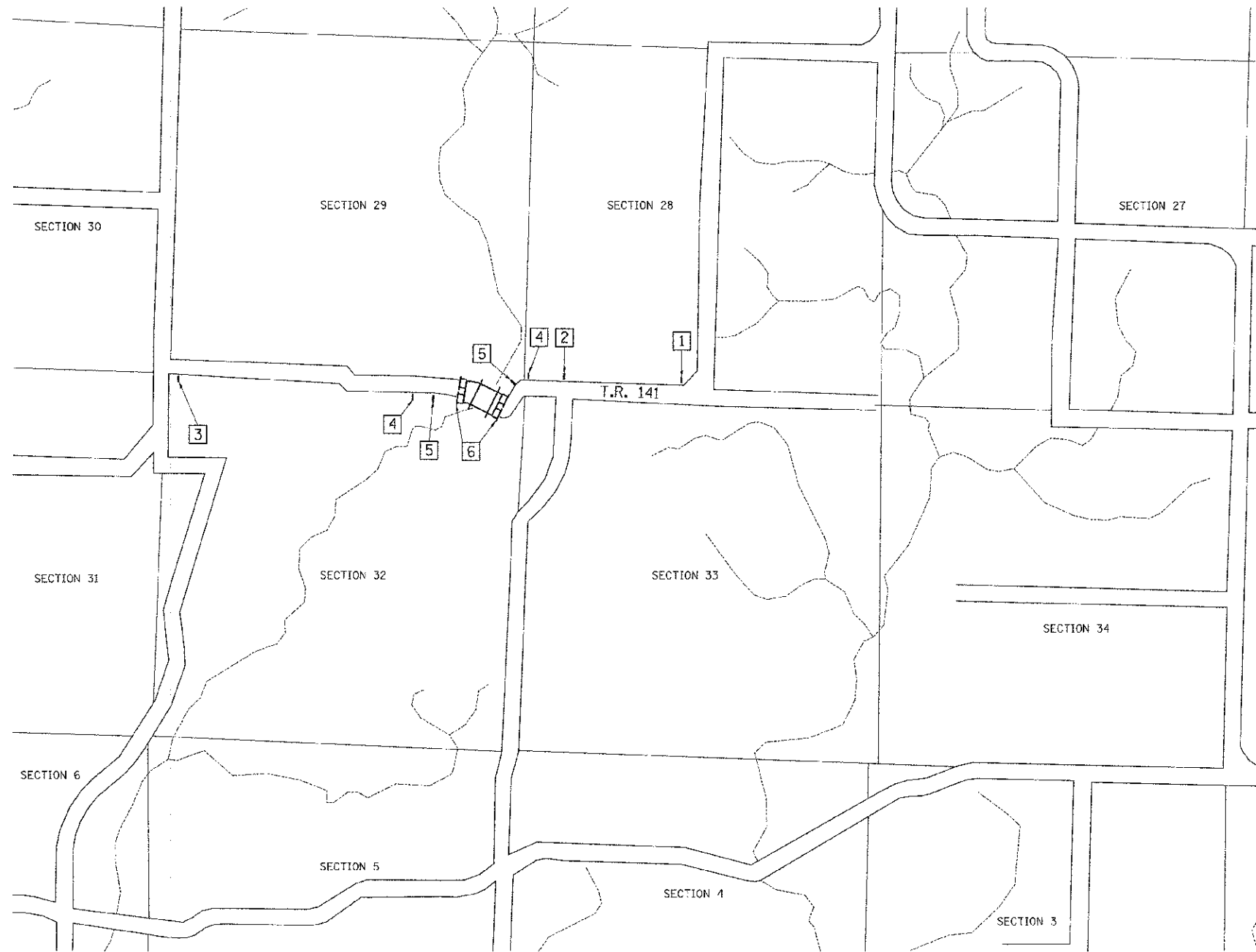
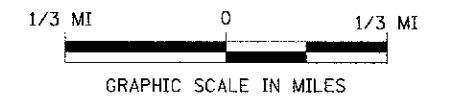


R 4 W, 4th PM



- | | |
|--|--|
| <p>1 ROAD CLOSED
1/2 MILE AHEAD
LOCAL TRAFFIC ONLY
R11-3</p> | <p>ROAD CLOSED
1/2 MILE AHEAD
LOCAL TRAFFIC ONLY</p> |
|--|--|
- | | |
|--|--|
| <p>2 ROAD CLOSED
1/4 MILE AHEAD
LOCAL TRAFFIC ONLY
R11-3</p> | <p>ROAD CLOSED
1/4 MILE AHEAD
LOCAL TRAFFIC ONLY</p> |
|--|--|
- | | |
|--|--|
| <p>3 ROAD CLOSED
3/4 MILE AHEAD
LOCAL TRAFFIC ONLY
R11-3</p> | <p>ROAD CLOSED
3/4 MILE AHEAD
LOCAL TRAFFIC ONLY</p> |
|--|--|
- | | |
|--|------------------------------|
| <p>4 ROAD CLOSED
AHEAD
W20-3</p> | <p>ROAD CLOSED
AHEAD</p> |
|--|------------------------------|
- | | |
|---|-------------------------------|
| <p>5 ROAD CLOSED
500 FT
W20-3</p> | <p>ROAD CLOSED
500 FT</p> |
|---|-------------------------------|
- 6 TYPE III BARRICADES

SEE STANDARD BLR 21
AND SPECIAL PROVISIONS



FILE NAME = V:\Bridge\3817 - Brown\3817b\001.dgn	USER NAME = othomas	DESIGNED -	REVISED -	BROWN COUNTY TOWNSHIP ROAD 141 OVER WELLS FORK	TRAFFIC CONTROL PLAN	RTE. TR 141	SECTION 10-04118-00-BR	COUNTY BROWN	TOTAL SHEETS 24	SHEET NO. 4
PLT SCALE = 1/8" = 1'	PLT DATE = 8/25/2012	DRAWN -	REVISED -	SCALE: NONE	SHEET NO. 1 OF 1 SHEETS	STA. 16+50.00	TO STA. 21+50.00	CONTRACT NO. 9388		
		CHECKED -	REVISED -			FED. ROAD DIST. NO. 7 [ILLINOIS]		FED. AID PROJECT BR05-0009(22)		
		DATE = 03/02/09	REVISED -							