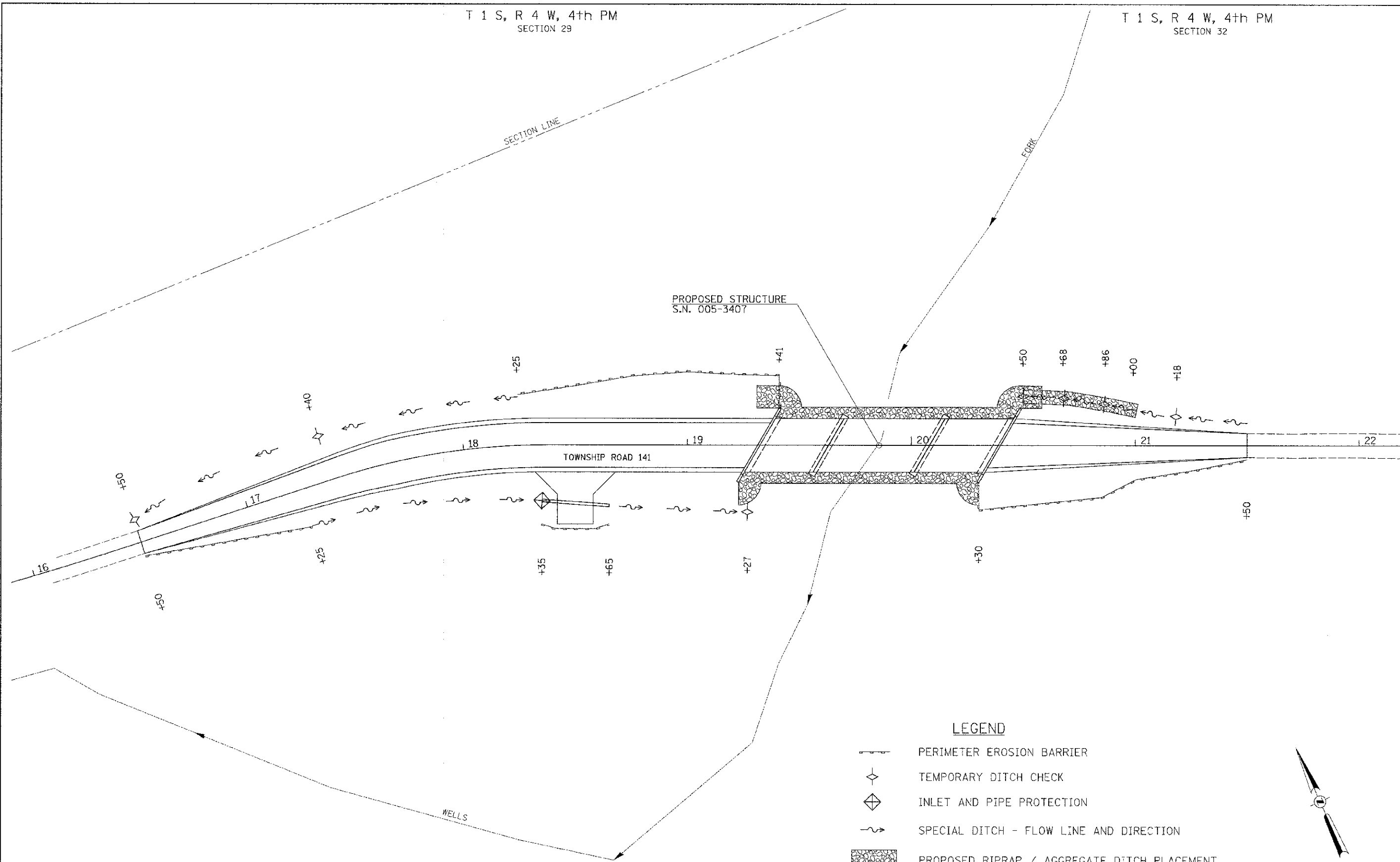





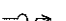

T 1 S, R 4 W, 4th PM
SECTION 29

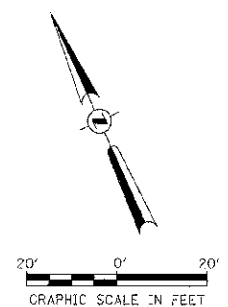
T 1 S, R 4 W, 4th PM
SECTION 32



T 1 S, R 4 W, 4th PM
SECTION 32

LEGEND

-  PERIMETER EROSION BARRIER
-  TEMPORARY DITCH CHECK
-  INLET AND PIPE PROTECTION
-  SPECIAL DITCH - FLOW LINE AND DIRECTION
-  PROPOSED RIPRAP / AGGREGATE DITCH PLACEMENT



FILE NAME =	USER NAME = cthomas	DESIGNED -	REVISED -
V:\Bridge\3017 - Brown\32175001.dgn		DRAWN -	REVISED -
	PLOT SCALE = 28.0000' / in.	CHECKED -	REVISED -
	PLOT DATE = 8/29/2012	DATE -	REVISED -

**BROWN COUNTY
TOWNSHIP ROAD 141
OVER WELLS FORK**

EROSION CONTROL PLAN
SCALE: 1" = 20' | SHEET NO. 1 OF 1 SHEETS | STA. 16+50.00 TO STA. 21+50.00

RTE.	SECTION	COUNTY	TOTAL SHEETS	SHEET NO.
TR 141	10-C4118-00-BR	BROWN	24	5
CONTRACT NO. 3588			FED. ROAD DIST. NO. 7 ILLINOIS FED. AID PROJECT BROS-0009R221	