

EAST ABUTMENT BILL OF MATERIAL

BAP NO.	NO.	SIZE	LENGTH	SHAPE
h	6	#4	28'-9"	—
h1	20	#4	6'-6"	—
p	10	#7	28'-9"	—
s	28	#4	10'-5"	□
s1	2	#4	7'-8"	□
s2	2	#4	8'-4"	□
u	6	#6	12'-0"	—
v	58	#4	5'-2"	—
v1	12	#4	6'-1"	—
Concrete Structures				CU YD 11.2
Reinforcement Bars				POUND 1,290
Structure Excavation				CU YD 30
Name Plates (Special)				EACH 1
Furnishing Steel Piles HP10x42				FOOT 69
Driving Piles				FOOT 69
Test Pile Steel HP10x42				EACH 1
Concrete Encasement				CU YD 1.4

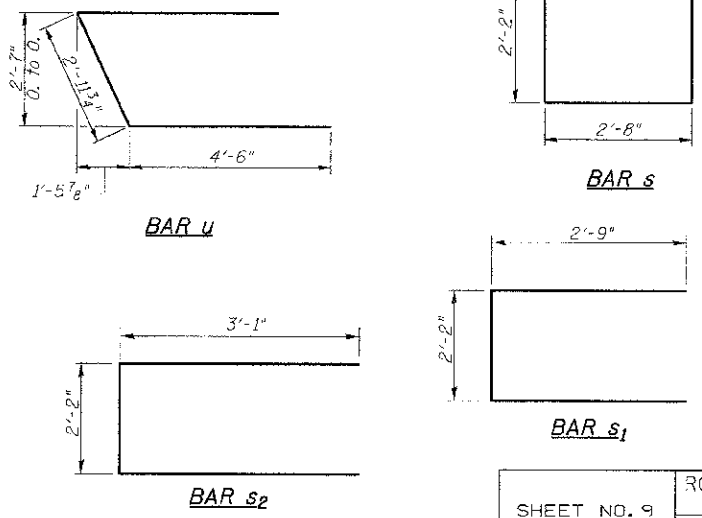
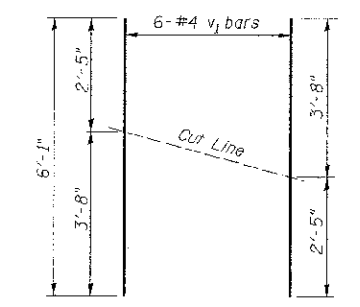
DESIGN STRESSES
 $f'_c = 3,500$ p.s.i.
 $f_y = 60,000$ p.s.i.

NOTES

- The Backwall and the portion of the Wingwalls above the bonded construction joint shall be cast against the in-place beam.
- Reinforcement bars shall conform to ASTM A706 Grade 60.

PILE DATA

Type & Size: Steel HP10x42
 Nominal Required Bearing: 335 kips
 Factored Resistance Available: 184 kips
 Est. Length: 23'
 No. Req'd: 4 (Includes 1 Test Pile)



EAST ABUTMENT BROWN COUNTY SECTION 10-04118-00-BR T.R. 141 OVER WELLS FORK

SHEET NO. 9 12 SHEETS	ROUTE NO. TR 141	SECTION 10-04118-00-BR	COUNTY BROWN	TOTAL SHEETS 24	SHEET NO. 15
	S.N. 005-3407		CONTRACT NO. 93588		
FED. ROAD DIST. NO. 7 ILLINOIS			FED. AID PROJECT BROS-0009(221)		