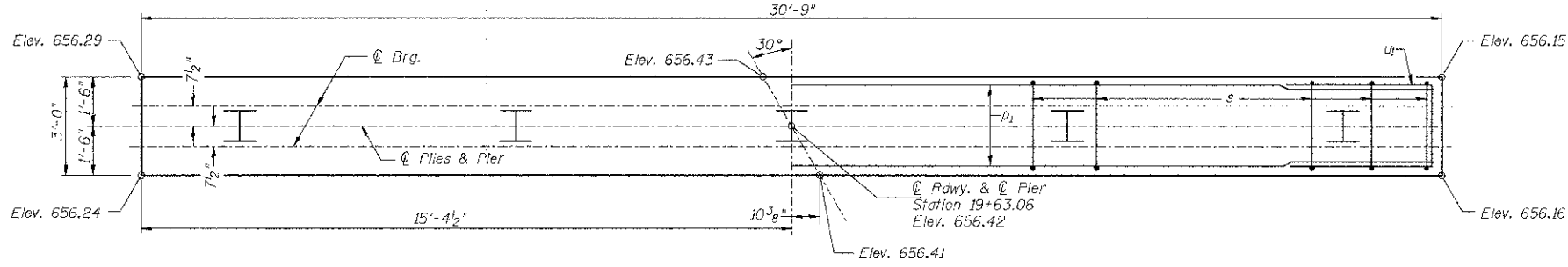
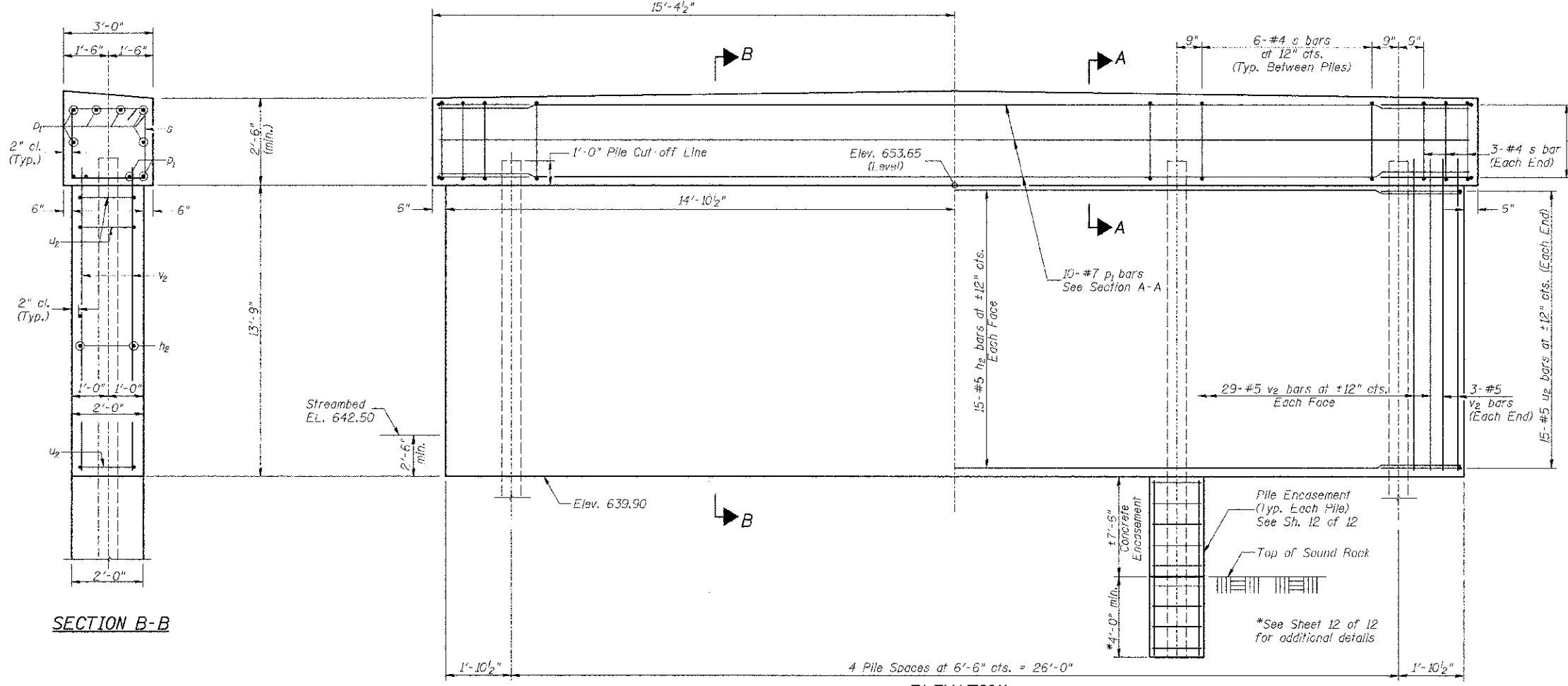


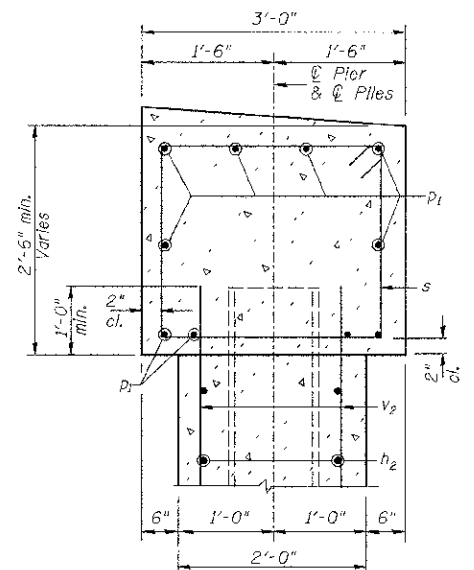
NOTES:
 All edges shall have standard $\frac{3}{4}$ " chamfer.
 The Pier Stem shall be constructed in a single continuous concrete pour.



TOP PLAN

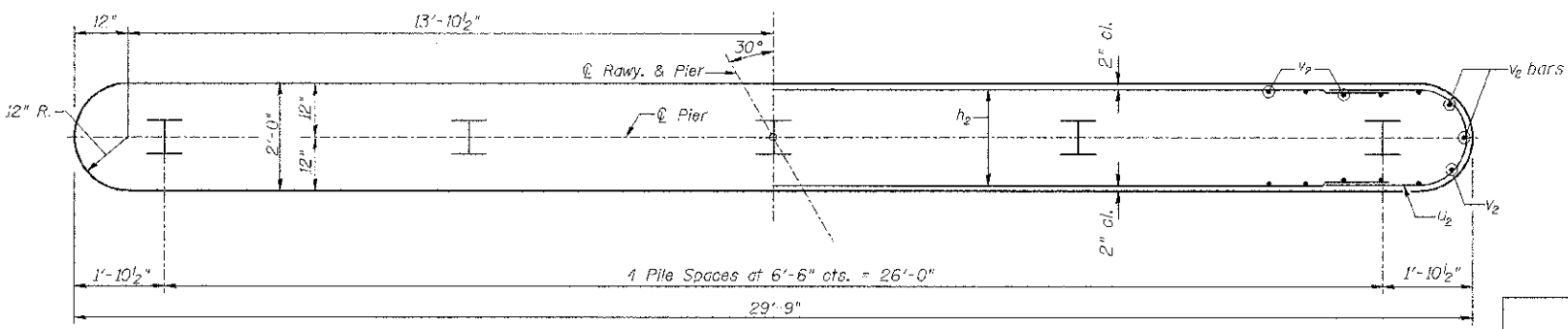


ELEVATION
(Looking Upstation)



SECTION A-A

SECTION B-B



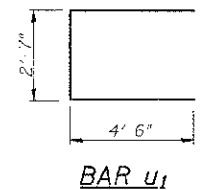
FOOTING PLAN

PILE DATA
 Type & Size: Steel HP10x42
 Nominal Required Bearing: Set in Rock (335 kips)
 Factored Resistance Available: Set in Rock (184 kips)
 Est. Length: 27'
 No. Req'd: 5

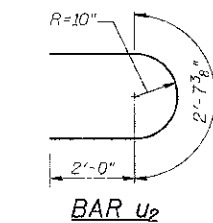
**PIER #1
BILL OF MATERIAL**

BAR	NO.	SIZE	LENGTH	SHAPE
h_2	30	#5	27'-5"	—
p_y	10	#7	30'-6"	—
s	30	#4	10'-5"	□
u_x	6	#6	11'-7"	□
u_y	30	#5	6'-8"	⌋
v_x	64	#5	14'-7"	—
Concrete Structures			CU YD	39.0
Reinforcement Bars			POUND	2,980
Cofferdam Excavation			CU YD	35
Furnishing Steel Piles HP10x42			FOOT	135
① Setting Piles in Rock			EACH	5
Concrete Encasement			CU YD	4.4
① Cofferdam (Type 1) (Location-1)			EACH	1

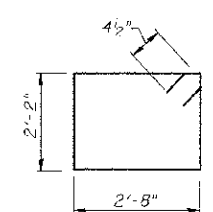
① See Special Provisions



BAR u_1



BAR u_2



BAR s

**PIER #1
BROWN COUNTY
SECTION 10-04118-00-BR
T.R. 141 OVER WELLS FORK**

SHEET NO. 10 12 SHEETS	ROUTE NO. TR 141	SECTION 10-04118-00-BR	COUNTY BROWN	TOTAL SHEETS 24	SHEET NO. 16
	S.N. 005-3407		CONTRACT NO. 93588		
FED. ROAD DIST. NO. 7 ILLINOIS			FED. AID PROJECT BROS-0009(221)		