

F.A. RTE.	SECTION	COUNTY	TOTAL SHEETS	SHEET NO.
	09-00006-00-SW	SANGAMON	20	1
FED. ROAD DIST. NO.	ILLINOIS	CONTRACT NO.	93589	

**STATE OF ILLINOIS
DEPARTMENT OF TRANSPORTATION
DIVISION OF HIGHWAYS
PLANS FOR**

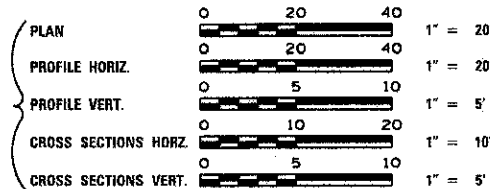
**PROPOSED LOCAL AGENCY IMPROVEMENTS
SAFE ROUTES TO SCHOOL PROGRAM**

INDEX OF SHEETS

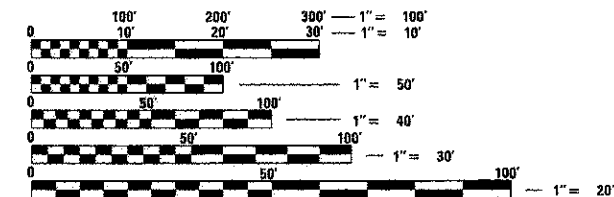
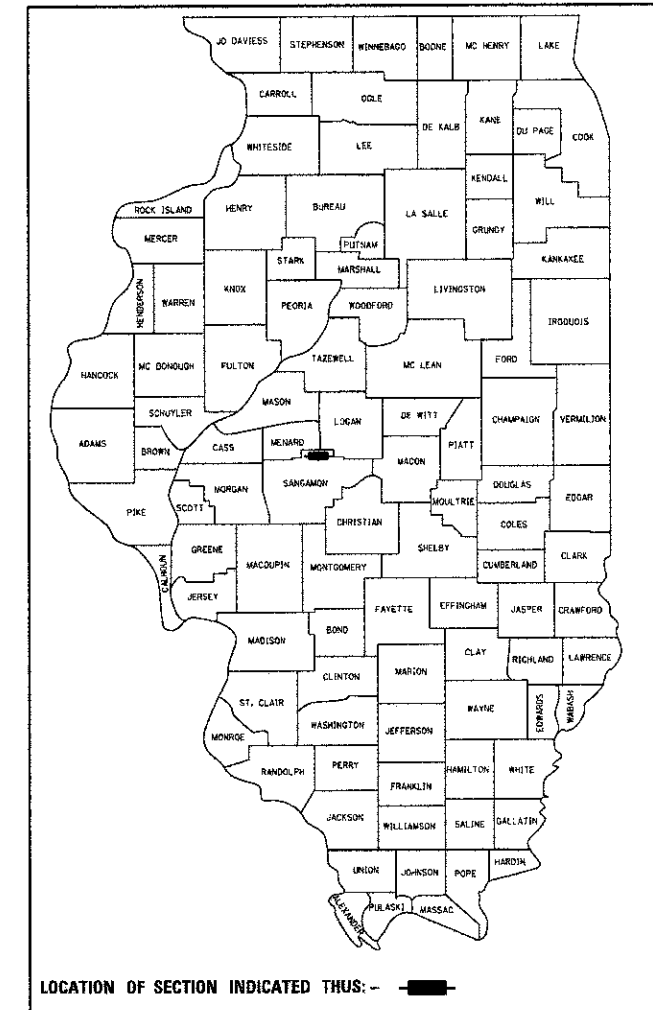
SHEET NO.	DESCRIPTION
1	COVER SHEET
2-3	SUMMARY OF QUANTITIES & GENERAL NOTES
4	TYPICAL SECTIONS
5	SCHEDULE OF QUANTITIES
6	GENERAL PLAN WALNUT STREET & SCHOOL ENTRANCE
7	GENERAL PLAN WALNUT STREET & CONREY STREET
8	PLAN AND PROFILE PINE STREET
9-10	STORM SEWER PLAN
11	GRADING PLAN DETENTION POND (FOR INFORMATION ONLY)
12	SIGNING PLAN
13	SIGN PANEL DETAILS
14	INTERSECTION DETAIL PINE STREET AND CONREY STREET
15	DETAILS
16-20	CROSS SECTIONS PINE STREET

STANDARDS

000001-06	STANDARD SYMBOLS, ABBREVIATIONS, AND PATTERNS
280001-07	TEMPORARY EROSION CONTROL SYSTEMS
424001-07	PERPENDICULAR CURB RAMPS FOR SIDEWALKS
424016-01	MID-BLOCK CURB RAMPS FOR SIDEWALKS
542301-03	PRECAST REINFORCED CONCRETE FLARED END SECTION
542401-01	METAL END SECTION FOR PIPE CULVERTS
602301-03	INLET - TYPE A
602401-03	MANHOLE TYPE A
602601-02	PRECAST REINFORCED CONCRETE FLAT SLAB TOP
604001-03	FRAME AND LIDS TYPE 1
604006-04	FRAME AND GRATE TYPE 3
604036-02	GRATE TYPE 8
606001-05	CONCRETE CURB TYPE B AND COMBINATION CONCRETE CURB AND GUTTER
701301-04	LANE CLOSURE, 2L, 2W, SHORT TIME OPERATIONS
701501-06	URBAN LANE CLOSURE, 2L, 2W, UNDIVIDED
701701-08	URBAN LANE CLOSURE, MULTILANE INTERSECTION
701801-05	SIDEWALK CORNER OR CROSSWALK CLOSURE
701901-02	TRAFFIC CONTROL DEVICES
720001-01	SIGN PANEL MOUNTING DETAILS
720006-03	SIGN PANEL ERECTION DETAILS
720011-01	METAL POSTS FOR SIGNS, MARKERS & DELINEATORS
BLR 21-9	TYPICAL APPLICATIONS OF TRAFFIC CONTROL DEVICES FOR CONSTRUCTION ON RURAL LOCAL HIGHWAYS
BLR 22-7	TYPICAL APPLICATION OF TRAFFIC CONTROL DEVICES FOR CONSTRUCTION ON RURAL LOCAL HIGHWAYS



**VARIOUS STREETS
SECTION 09-00006-00-SW
VILLAGE OF WILLIAMSVILLE
PROJECT SRTS-4008(115)
SANGAMON COUNTY
JOB NUMBER C-40-086-09**



FULL SIZE PLANS HAVE BEEN PREPARED USING STANDARD ENGINEERING SCALES. REDUCED SIZED PLANS WILL NOT CONFORM TO STANDARD SCALES. IN MAKING MEASUREMENTS ON REDUCED PLANS, THE ABOVE SCALES MAY BE USED.

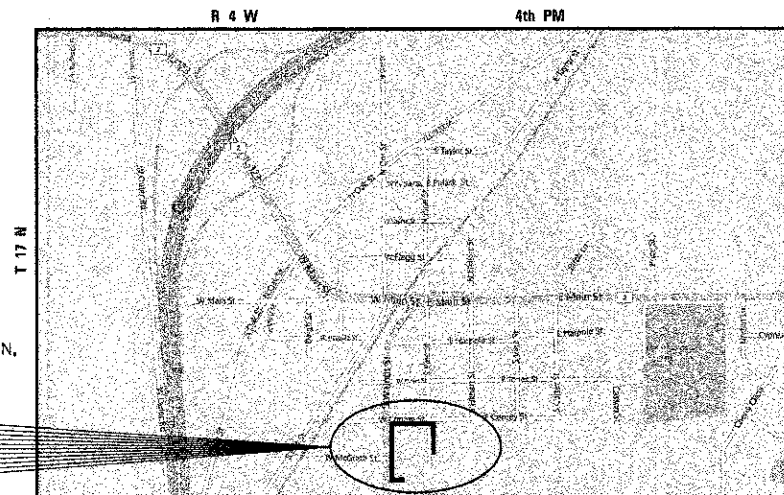
J.U.L.I.E.
JOINT UTILITY LOCATION INFORMATION FOR EXCAVATION
1-800-892-0123
OR 811

**PROJECT ENGINEER
PROJECT MANAGER
CONTRACT NO. 93589**

PROJECT DESCRIPTION:

REMOVAL AND REPLACEMENT OF PCC SIDEWALKS 4 INCH. CONSTRUCTION OF 10' WIDE MULTI-USE PATH, DRAINAGE STRUCTURE AND STORM SEWER INSTALLATION, PAVEMENT REMOVAL AND REPLACEMENT, DETENTION POND CONSTRUCTION, INSTALL SIGNING

PROJECT LOCATION
SECTION 09-00006-00-SW



LOCATION MAP

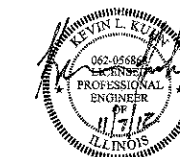
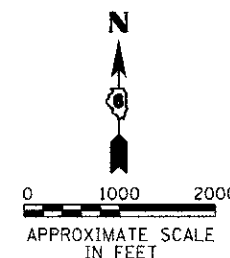
NET LENGTH OF PROJECT = 1,672.00 FEET = 0.317 MILES

DESIGN DESIGNATION

LOCAL STREETS
DESIGN SPEED: NONE REQUIRED

UTILITIES

- AMERENCILCO (NORTH)
- FRONTIER COMMUNICATIONS
- GREENE COUNTY CABLE TV
- MCI
- SPRINT
- VILLAGE OF WILLIAMSVILLE



EXPIRES: 11/30/2013
QUIGG ENGINEERING INC.

APPROVED	<i>[Signature]</i>	20 12
VILLAGE PRESIDENT		
PASSED	<i>[Signature]</i>	20 12
DISTRICT SIX ENGINEER OF LOCAL ROADS & STREETS		
PASSED	<i>[Signature]</i>	20 12
DISTRICT SIX ENGINEER OF CONSTRUCTION		
Releasing For Bid Based on Limited Review	<i>[Signature]</i>	20 12
DEPUTY DIRECTOR OF HIGHWAYS, REGION FOUR ENGINEER		
STATE OF ILLINOIS DEPARTMENT OF TRANSPORTATION		

**PRINTED BY THE AUTHORITY
OF THE STATE OF ILLINOIS**

COMPUTER FILE NO. 10-47-04_sht_Cover.dgn PROJECT 10-47-04 08/03/2012