

FAS RTE.	SECTION	COUNTY	TOTAL SHEETS	SHEET NO.
656	06-00265-00-BR	SHELBY	29	1

CONTRACT NO. 95701

**INDEX OF SHEETS**

See Page 2 of 29 Pages

**HIGHWAY STANDARDS**

See Page 2 of 29 Pages

STATE OF ILLINOIS  
DEPARTMENT OF TRANSPORTATION  
**PLANS FOR PROPOSED  
MAJOR BRIDGE PROGRAM**

**SHELBY COUNTY HIGHWAY DEPARTMENT  
SECTION 06-00265-00-BR  
PROJECT BRS - 656 (113)  
SHELBY COUNTY  
F.A.S. ROUTE 656 (CH-33)  
JOB NO. C - 97 - 044 - 12  
PROPOSED STRUCTURE NO. 087- 3555  
EXISTING STRUCTURE NO. 087-3014**



**EXISTING STRUCTURE NO. 087-3014**

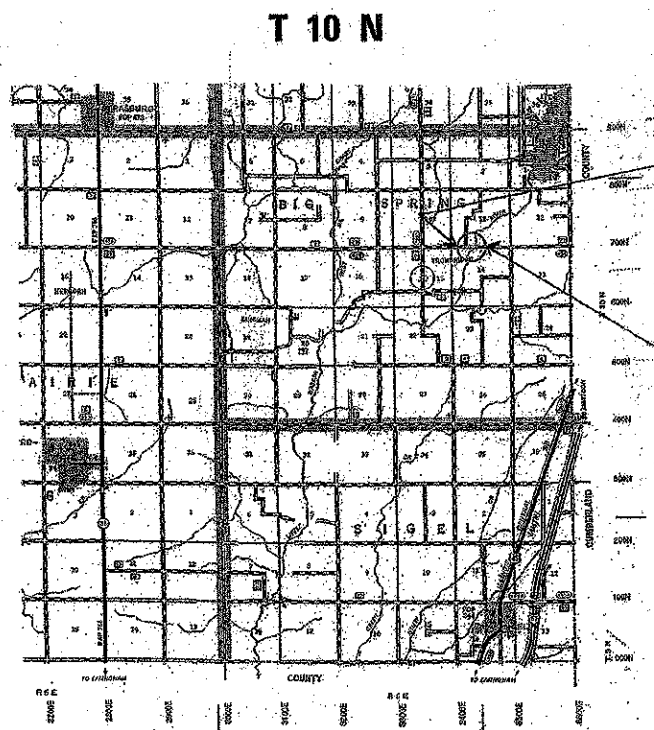
3 SPAN NON-COMPOSITE CONTINUOUS STEEL  
I-BEAM BRIDGE ON PILE BENT PIERS AND ABUTMENTS

**PROPOSED STRUCTURE NO. 087-3555**

3 SPAN-27" PPC DECK BEAMS ON PILE  
BENT PIERS AND ABUTMENTS

**DESIGN INFORMATION**

DESIGN CLASSIFICATION: COLLECTOR (MAJOR)  
CURRENT ADT: 1100  
DESIGN ADT: 1400  
DESIGN YEAR: 2030  
DESIGN SPEED 50 M.P.H.



BEGIN PROJECT  
STA 189 + 72

END PROJECT  
STA 196 + 52

TOTAL PROJECT LENGTH  
680 FEET = 0.129 MILES

PLANS PREPARED BY:

*S. Alan Spesard*  
S. ALAN SPESARD, COUNTY ENGINEER, PE  
ILLINOIS PROFESSIONAL ENGINEER 062-052965  
EXPIRES 11-30-2013

12-21-12  
DATE



J.U.L.I.E.  
JOINT UTILITY LOCATION INFORMATION FOR EXCAVATION  
1-800-892-0123 (TOLL FREE)

PLANS PREPARED BY:  
SHELBY CO HWY DEPT  
R. R. 3 BOX 38A  
SHELBYVILLE IL 62565  
217-774-2721

CONTRACT NO. 95701

APPROVED	12-21 20 12 <i>S. Alan Spesard</i> COUNTY ENGINEER, SHELBY COUNTY
PASSED	1-14 20 13 <i>M. J. East</i> District Seven Engineer of Local Roads and Streets
RELEASING FOR BID BASED ON LIMITED REVIEW	1/14 20 13 <i>Roger Z. Schubert</i> DEPUTY DIRECTOR OF HIGHWAYS, REGION ENGINEER REGION FOUR ENGINEER
STATE OF ILLINOIS DEPARTMENT OF TRANSPORTATION	