

GENERAL NOTES

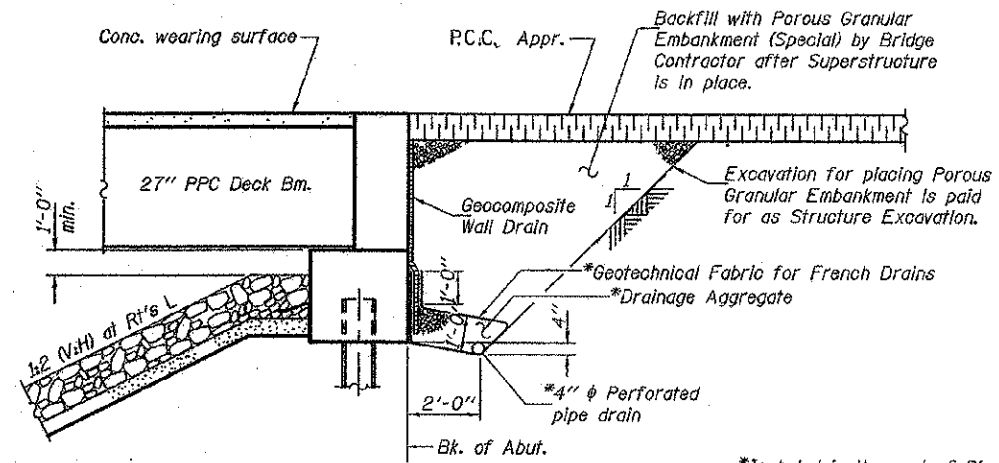
Reinforcement bars designated (E) shall be epoxy coated.
 Layout of slope protection system may be varied to suit ground conditions in the field as directed by the Engineer.
 The existing structural steel coating contains lead. The Contractor shall take appropriate precautions to deal with the presence of lead on this project.

INDEX OF SHEETS

- 1 General Plan & Elevation
- 2 General Data
- 3 Steel Railing, Type SM with Concrete Wearing Surface
- 4 Superstructure
- 5-6 27" x 36" PPC Deck Beam Details
- 7 Abutments
- 8 Piers
- 9 H-Pile Details
- 10-12 Soil Boring Logs

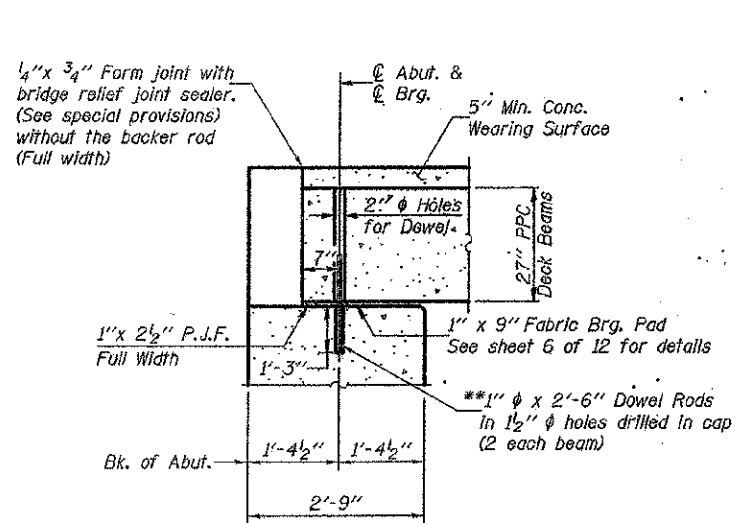
TOTAL BILL OF MATERIAL

ITEM	UNIT	SUPER	SUB	TOTAL
Porous Granular Embankment (Special)	Cu. Yd.		67	67
Stone Riprap, Class A4	Ton		621	621
Filter Fabric	Sq. Yd.		677	677
Removal of Existing Structures	Each	1		1
Structure Excavation	Cu. Yd.		85	85
Concrete Structures	Cu. Yd.		56.2	56.2
Bridge Deck Grooving	Sq. Yd.	540		540
Concrete Encasement	Cu. Yd.		21.5	21.5
Protective Coat	Sq. Yd.	578		578
Concrete Wearing Surface, 5"	Sq. Yd.	573		573
Precast Prestressed Concrete Deck Beams (27" Depth)	Sq. Ft.	5153		5153
Reinforcement Bars, Epoxy Coated	Pound	7670	7090	14760
Steel Railing, Type SM	Foot	344		344
Furnishing Steel Piles HP10x42	Foot		550	550
Name Plates	Each	1		1
Setting Piles in Rock	Each		22	22
Geocomposite Wall Drain	Sq. Yd.		37	37
Pipe Underdrains for Structures, 4"	Foot		118	118

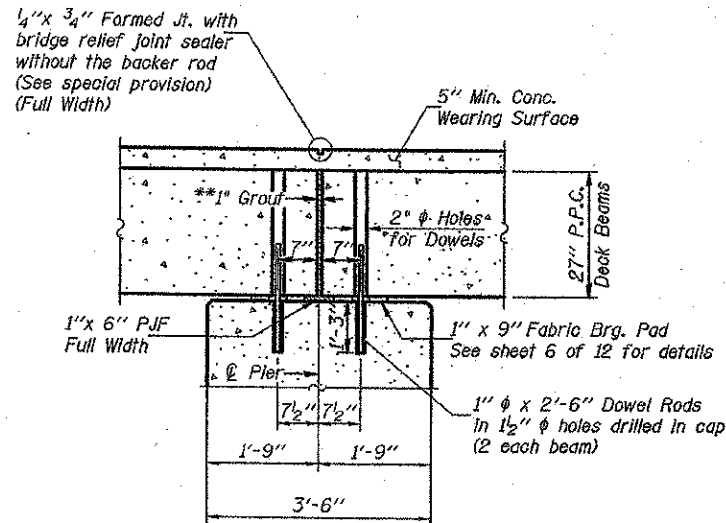


SECTION THRU ABUTMENT
(Horiz. dim. at Rt. L's)

Note: All drainage system components shall extend to 2'-0" from the end of each wingwall except an outlet pipe shall extend until intersecting with the side slopes. The pipes shall drain into concrete headwalls. (See Article 601.05 of the Standard Specifications and Highway Standard 60110).

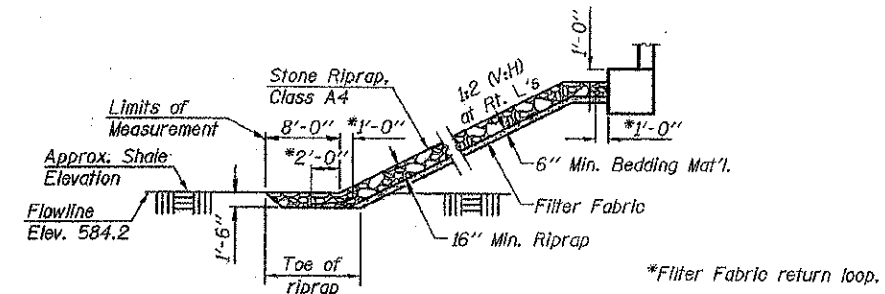


SEC. THRU ABUT.



SEC. AT PIER

**1" joint shall be filled with non-shrink grout.
 1" dimension may vary to accommodate tolerance in beam length.



RIPRAP PLACEMENT DETAIL
(Toe of riprap at Pier 1 only)

Note: Excavation and aggregate bedding will not be paid for as separate items and shall be considered as included in Stone Riprap, Class A4.

DESIGNED - Fess Teklehaimanot	EXAMINED - Thomas J. Demagallibi	DATE - 4/19/2012
CHECKED - Stephen M. Ryan	ENGINEER OF BRIDGE DESIGN	
DRAWN - h.t. duong	PASSED - [Signature]	REVISED
CHECKED - FT/SMR	ENGINEER OF BRIDGES AND STRUCTURES	REVISED

STATE OF ILLINOIS
DEPARTMENT OF TRANSPORTATION

GENERAL DATA
STRUCTURE NO. 087-3555
 SHEET NO. 2 OF 12 SHEETS

F.A.S. RTE.	SECTION	COUNTY	TOTAL SHEETS	SHEET NO.
666	06-00265-00-BR	SHELBY	29	19
CONTRACT NO. 96701			ILLINOIS FED. AID PROJECT	