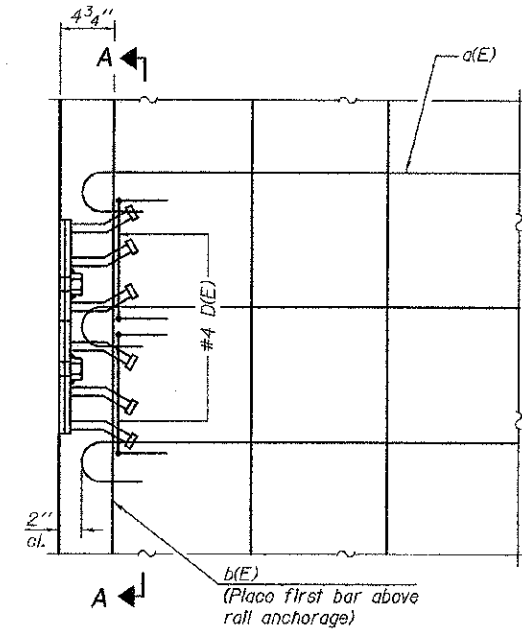
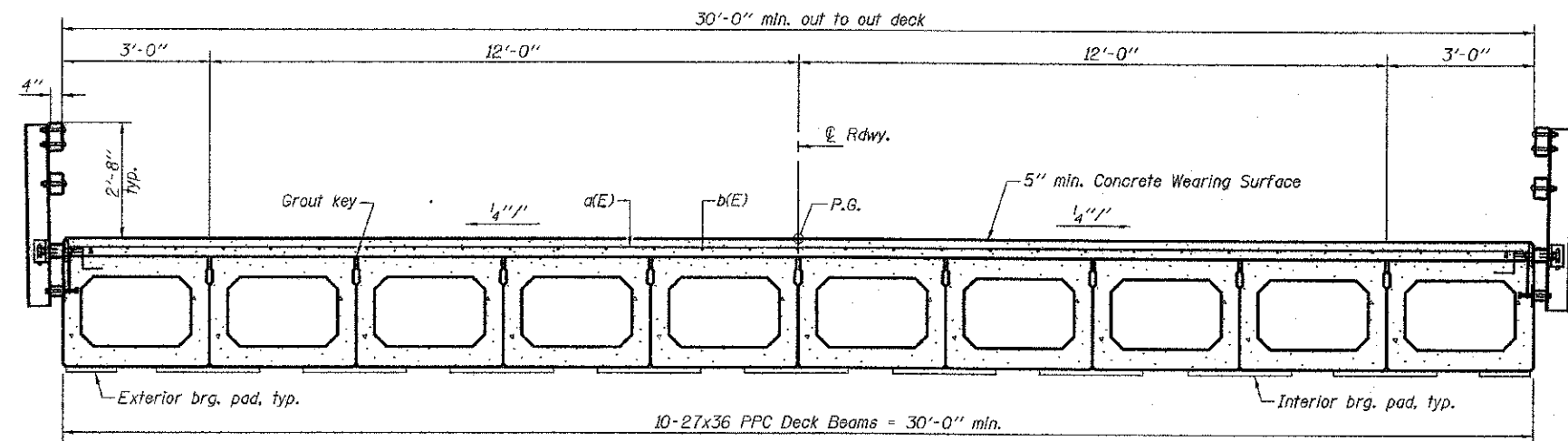


PLAN

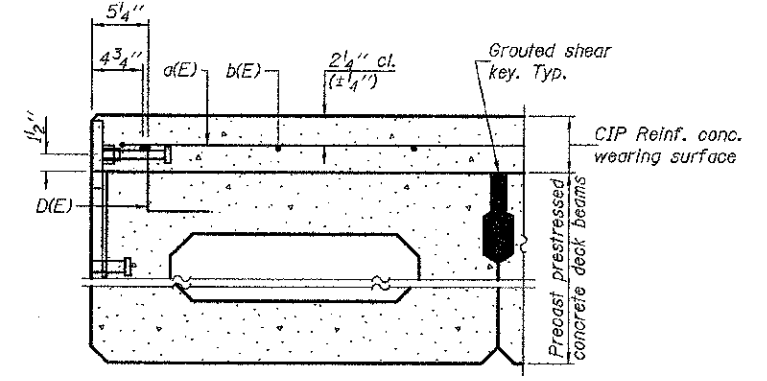


PLAN

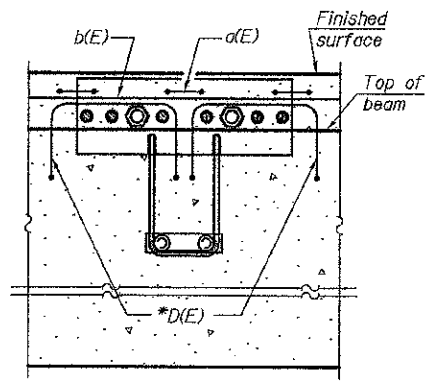
Notes:
Formwork necessary for the wearing surface may be secured utilizing the bottom rail anchorage inserts and/or additional inserts cast into the beam.



CROSS SECTION
(Looking east)



SECTION THRU FASCIA BEAM



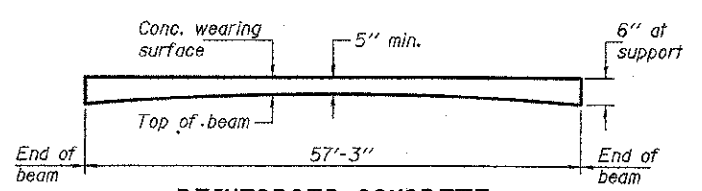
SECTION A-A

SUPERSTRUCTURE BILL OF MATERIAL

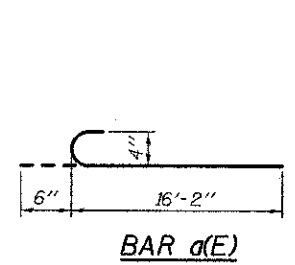
Bar	No.	Size	Length	Shape
a(E)	346	#4	16'-8"	C
b(E)	186	#4	30'-9"	—
Reinforcement Bars, Epoxy Coated			Pound	7670
Concrete Wearing Surface, 5"			Sq. Yd.	573
Bridge Deck Grooving			Sq. Yd.	540
Protective Coat			Sq. Yd.	578

Bars indicated thus 31 x 4-#4 etc. indicates 31 lines of bars with 4 lengths per line.

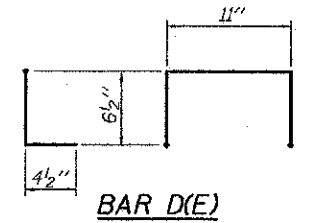
Notes:
See sheet 6 of 12 for fabric bearing pad details.
Dowel rods drilled in cap are included in the cost of Precast Prestressed Concrete Deck Beams (27" Depth).



REINFORCED CONCRETE WEARING SURFACE PROFILE



BAR a(E)



BAR D(E)

*Place 2-#4 D(E) bars in beam at each post location as shown. D(E) bar included in cost of beam.

MIN. BAR LAP
#4 bar = 2'-7"

DESIGNED - Fees Teklehaimanot
CHECKED - Stephen M. Ryan
DRAWN - h.t. duong
CHECKED - FT/SMR

EXAMINED - *Thomas J. Damagalki*
PASSED - *h.t. duong*
ENGINEER OF BRIDGE DESIGN
ENGINEER OF BRIDGES AND STRUCTURES

DATE - 4/19/2012
REVISED
REVISED

STATE OF ILLINOIS DEPARTMENT OF TRANSPORTATION

SUPERSTRUCTURE STRUCTURE NO. 087-3555

SHEET NO. 4 OF 12 SHEETS

F.A.S. RTE.	SECTION	COUNTY	TOTAL SHEETS	SHEET NO.
656	06-00265-00-BR	SHELBY	29	21

CONTRACT NO. 95701
ILLINOIS FED. AID PROJECT