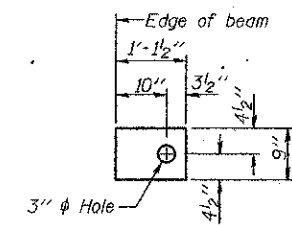


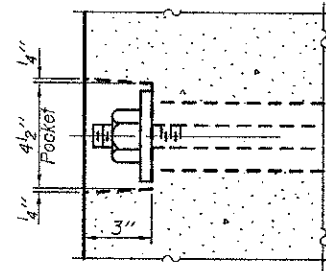
FABRIC BEARING PAD
(Interior)



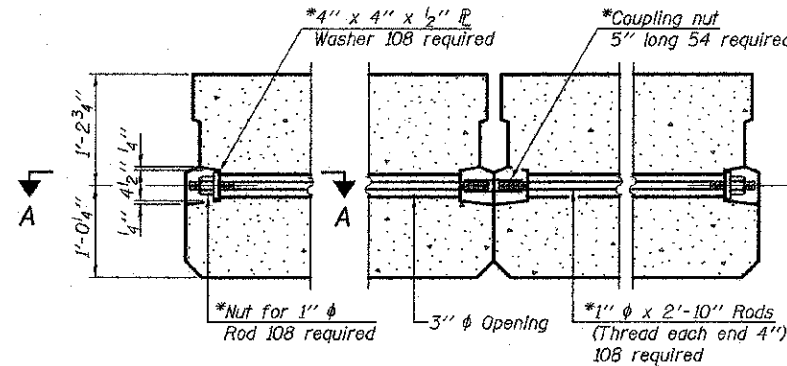
FABRIC BEARING PAD
(Exterior)

FIXED

Notes:
All bearing pads shall be 1" thick.
Omit holes when using expansion bearings.
Expansion bearing pad shall be bonded to the substructure.

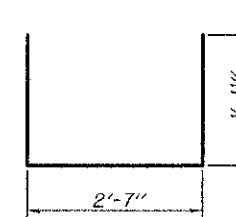


SECTION A-A

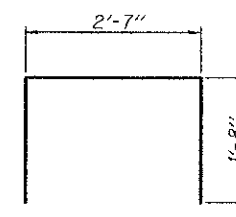


TYPICAL TRANSVERSE TIE ASSEMBLY

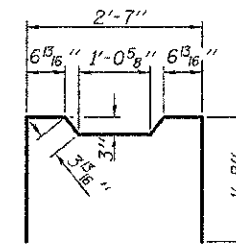
*All beams & spans



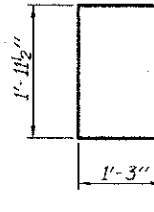
BAR S(E)



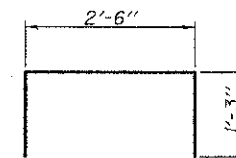
BAR S1(E)



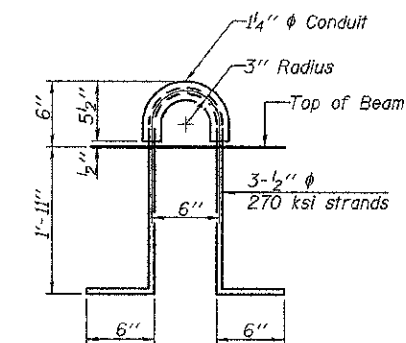
BAR S2(E)



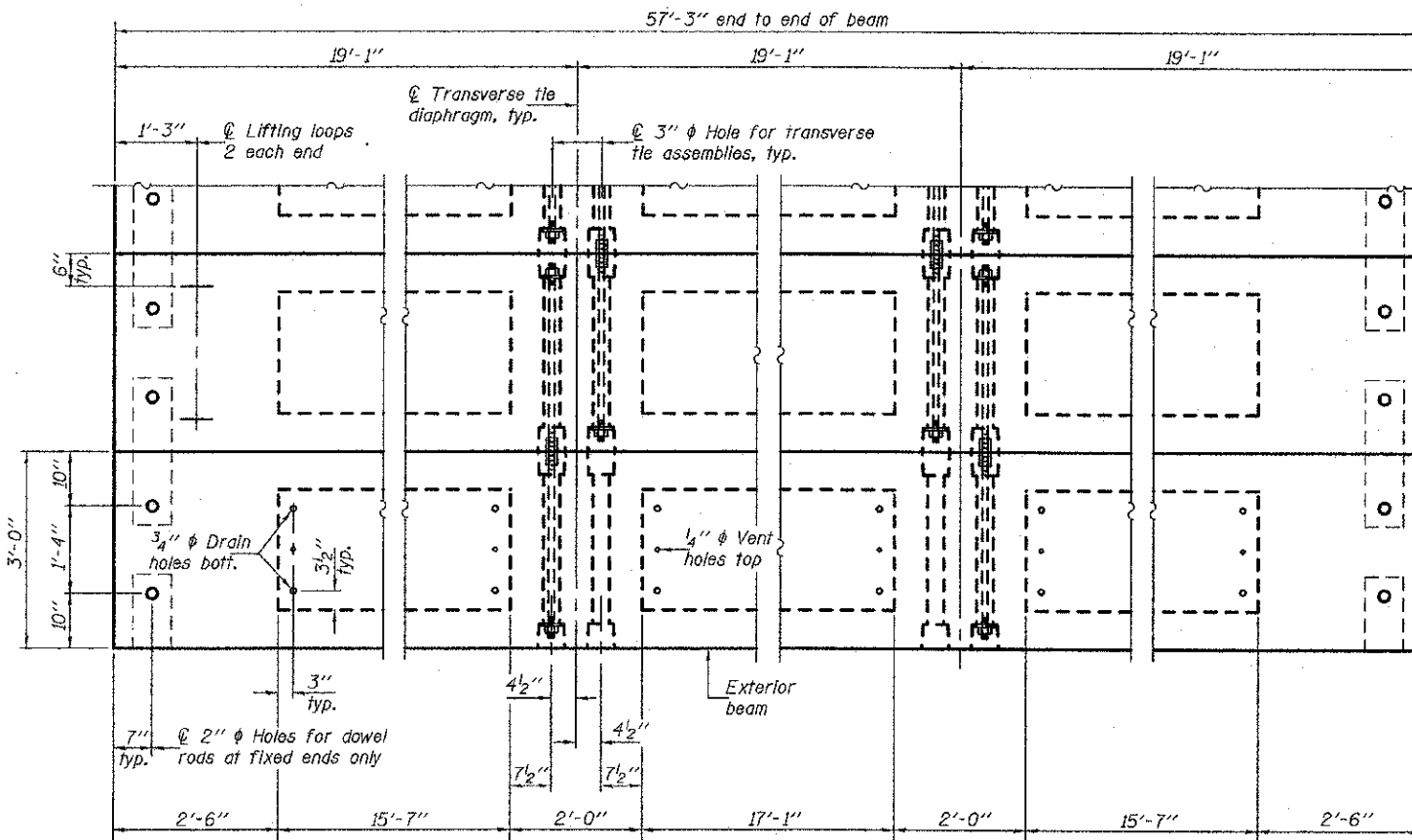
BAR U(E)



BAR U1(E)



LIFTING LOOP DETAIL



PLAN VIEW

NOTES

Note: Connect beams in pairs with the transverse tie configuration shown.

Prestressing steel shall be uncoated high strength, low relaxation 7-wire strand, Grade 270. The nominal diameter shall be 1/2" and the nominal cross-sectional area shall be 0.153 sq. in. The 1" diameter rods in the transverse tie assembly shall be tightened to a snug fit and the threads set. Pockets on exterior faces of bridge shall be filled with grout after transverse tie assembly is in place. Reinforcement bars shall conform to ASTM A 706, Grade 60. Two 1/2" fabric adjusting shims of the dimensions of the exterior bearing pad shall be provided for each bearing pad location. A minimum 2 1/2" diameter lifting pin shall be used to engage the lifting loops during handling. Corrosion inhibitor, per Article 1020.05(b)(12) and 1021.06 of the Standard Specifications, shall be used in the concrete for precast prestressed concrete deck beams. Compressive strength of prestressed concrete, f'c, shall be 6000 psi. Compressive strength of prestressed concrete at release, f'ci, shall be 5000 psi.

BILL OF MATERIAL

Precast Prestressed Concrete Deck Beams (27" depth)	Sq. Ft.	5153
---	---------	------

DESIGNED - Fess Teklehaimanot	EXAMINED - Thomas Donagallo	DATE - 4/19/2012	STATE OF ILLINOIS DEPARTMENT OF TRANSPORTATION	27" x 36" PPC DECK BEAM DETAILS STRUCTURE NO. 087-3555	F.A.S. RTE. NO. 656	SECTION 06-00265-00-BR	COUNTY SHELBY	TOTAL SHEETS 29	SHEET NO. 23
CHECKED - Stephen M. Ryan	PASSED - [Signature]	REVISED			CONTRACT NO. 95701				
DRAWN - h.t. duong	ENGINEER OF BRIDGES AND STRUCTURES	REVISED			ILLINOIS FED. AID PROJECT				
CHECKED - FT/SMR					SHEET NO. 6 OF 12 SHEETS				