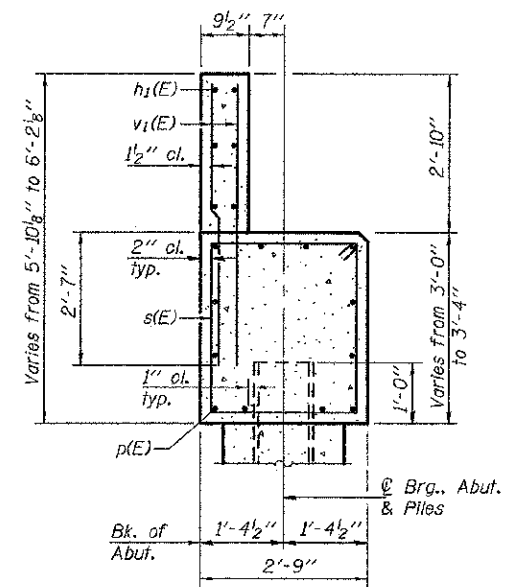
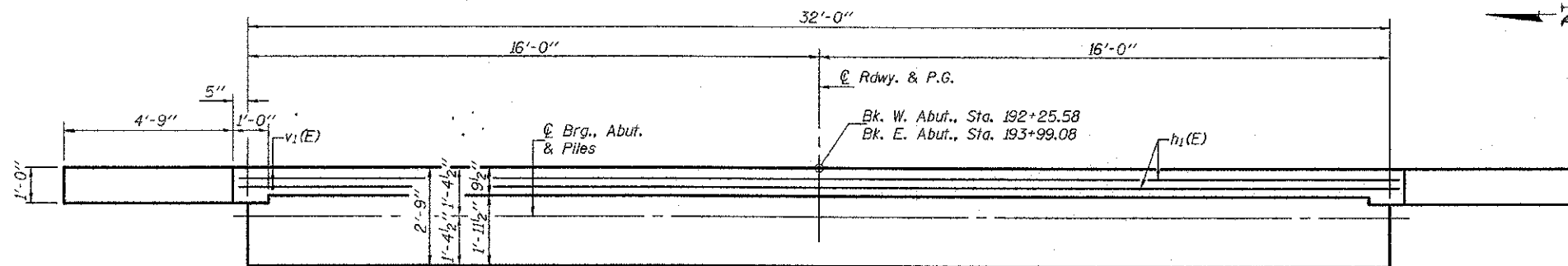


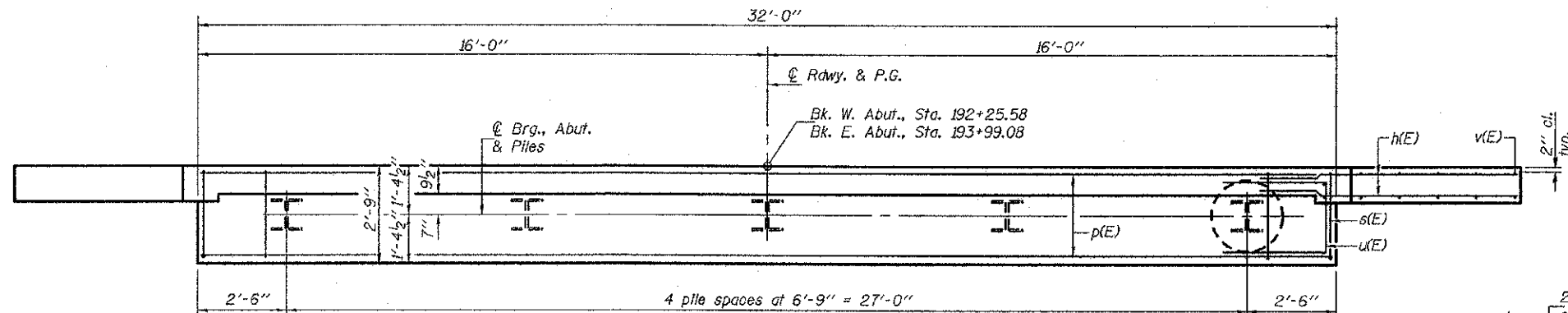
ELEVATION



SEC. THRU ABUT.



TOP VIEW



PLAN

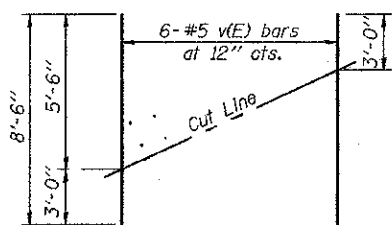
**TWO ABUTMENTS
BILL OF MATERIAL**

Bar	No.	Size	Length	Shape
h(E)	56	#5	9'-0"	—
h1(E)	12	#5	32'-6"	—
p(E)	24	#7	31'-8"	—
s(E)	60	#5	11'-1"	□
u(E)	16	#6	12'-4"	□
v(E)	24	#5	8'-6"	—
v1(E)	132	#5	5'-3"	—
Structure Excavation		Cu. Yd.	85	
Concrete Structures		Cu. Yd.	29.9	
Reinforcement Bars, Epoxy Coated		Pound	4410	
Furnishing Steel Piles, HP10x42		Foot	250	
Concrete Encasement		Cu. Yd.	3.5	
Setting Piles in Rock		Each	10	

For details of piles and conc. encasement, see sheet 9 of 12.

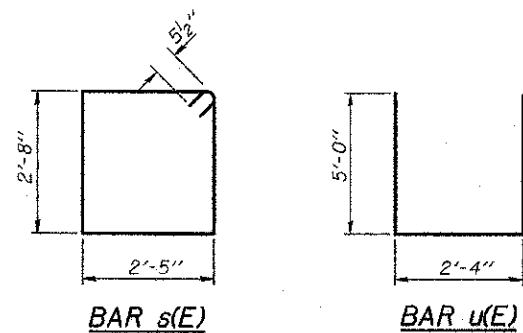
PILE DATA

Type: Steel HP10x42
 Nominal Required Bearing: Set in Rock
 Factored Resistance Available: 165 Kips
 Est. Length: 25'
 No. Production Piles (2 Abut.): 10
 No. Test Piles: 0



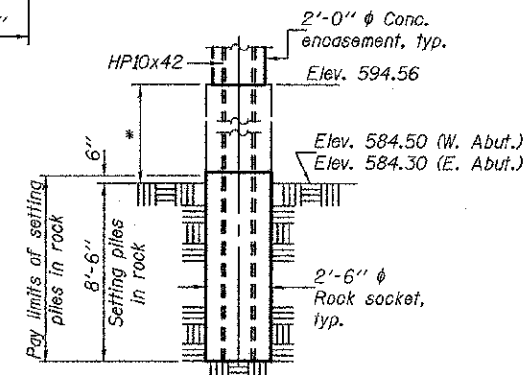
FIELD CUTTING DIAGRAM

Order v(E) full length. Cut as shown & use remainder of bars in opposite face.



BAR s(E)

BAR u(E)



SETTING PILES IN ROCK DETAIL

*Backfill remaining holes according to the special provisions for Setting Piles in Rock.

DESIGNED - Fess Taklehanot
 CHECKED - Stephen M. Ryan
 DRAWN - h.t. duong
 CHECKED - FT/SMR

EXAMINED - Thomas J. Domagala
 PASSED - [Signature]
 DATE - 4/19/2012
 REVISIONS -

STATE OF ILLINOIS
 DEPARTMENT OF TRANSPORTATION

ABUTMENTS
 STRUCTURE NO. 087-3555

SHEET NO. 7 OF 12 SHEETS

F.A.S. RTE.	SECTION	COUNTY	TOTAL SHEETS	SHEET NO.
686	06-00265-00-BR	SHELBY	29	24
				CONTRACT NO. 95701
[ILLINOIS] FED. AID PROJECT				